



# UNFOLDING 19/20

○ —————

**The Annual Plan  
for 2019/20**



**RANGITIKEI**  
DISTRICT COUNCIL  
*Making this place home.*

## Our Councillors



**His Worship the Mayor  
Andy Watson**  
andy.watson@rangitikei.govt.nz  
Ph. 027 617 7668



**Cr Nigel Belsham  
Deputy Mayor**  
nigel.belsham@rangitikei.govt.nz  
Ph. 027 419 1024



**Cr Graeme Platt**  
graeme.p@xtra.co.nz  
Ph. 021 405 098



**Cr Soraya Peke-Mason**  
sorayapm@xtra.co.nz  
Ph. 027 270 7763



**Cr Dave Wilson**  
davewilsonrd@gmail.com  
Ph. 027 223 4279



**Cr Cath Ash**  
cr.cath.ash@gmail.com  
Ph. 021 524 585



**Cr Jane Dunn**  
jane.dunn@outlook.co.nz  
Ph. 027 746 0791



**Cr Ruth Rainey**  
raineyr@xtra.co.nz  
Ph. 021 100 8627



**Cr Dean McManaway**  
jilden@xtra.co.nz  
Ph. 027 429 1292



**Cr Angus Gordon**  
angusg@xtra.co.nz  
Ph. 021 111 4767



**Cr Richard Aslett**  
mangawekagallery@xtra.co.nz  
Ph. 027 526 6612



**Cr Lynne Sheridan**  
lynne.s@farmside.co.nz  
Ph. 06 327 5980

# THE YEAR AHEAD

## Message from Mayor Andy Watson

Welcome to the discussion around the Annual Plan. The District is in an exciting place, we have lots of new residents moving here, many businesses are looking to expand or operate in our patch and there is considerable interest in commercial subdivisions. We need to continue to be proactive in facilitating those relationships. Your views are important to us, please try to take part in one of the community consultations planned or give me a call and have a conversation.

This is the second year of the Long Term Plan. As such, the Annual Plan is a refresh of what the Long Term Plan anticipated would be on Council's agenda during 2019/20, and the financial implications. Much of what was planned will be done.

We are continuing to progress the major projects. Right now there is obvious work being done on the Criterion Street site for the new Bulls Community Centre – and the community house in Walton Street, the product of so much community effort and generosity which, when sold in May, will make a significant contribution to the Bulls Centre project budget. In Marton there is a business case study and design process under way on how to make best use of the heritage buildings on the Cobbler/Davenport and Abraham & Williams sites as an option to replace our current earthquake prone administration centre. In Taihape we are progressing design work for the construction of new amenity facilities on Taihape Memorial Park. Less obvious, but equally important, is the work towards getting Marton's treated wastewater out of the Tutaenui Stream and onto land south-west of Bulls, and getting Ratana's treated wastewater out of Lake Waipu onto land.

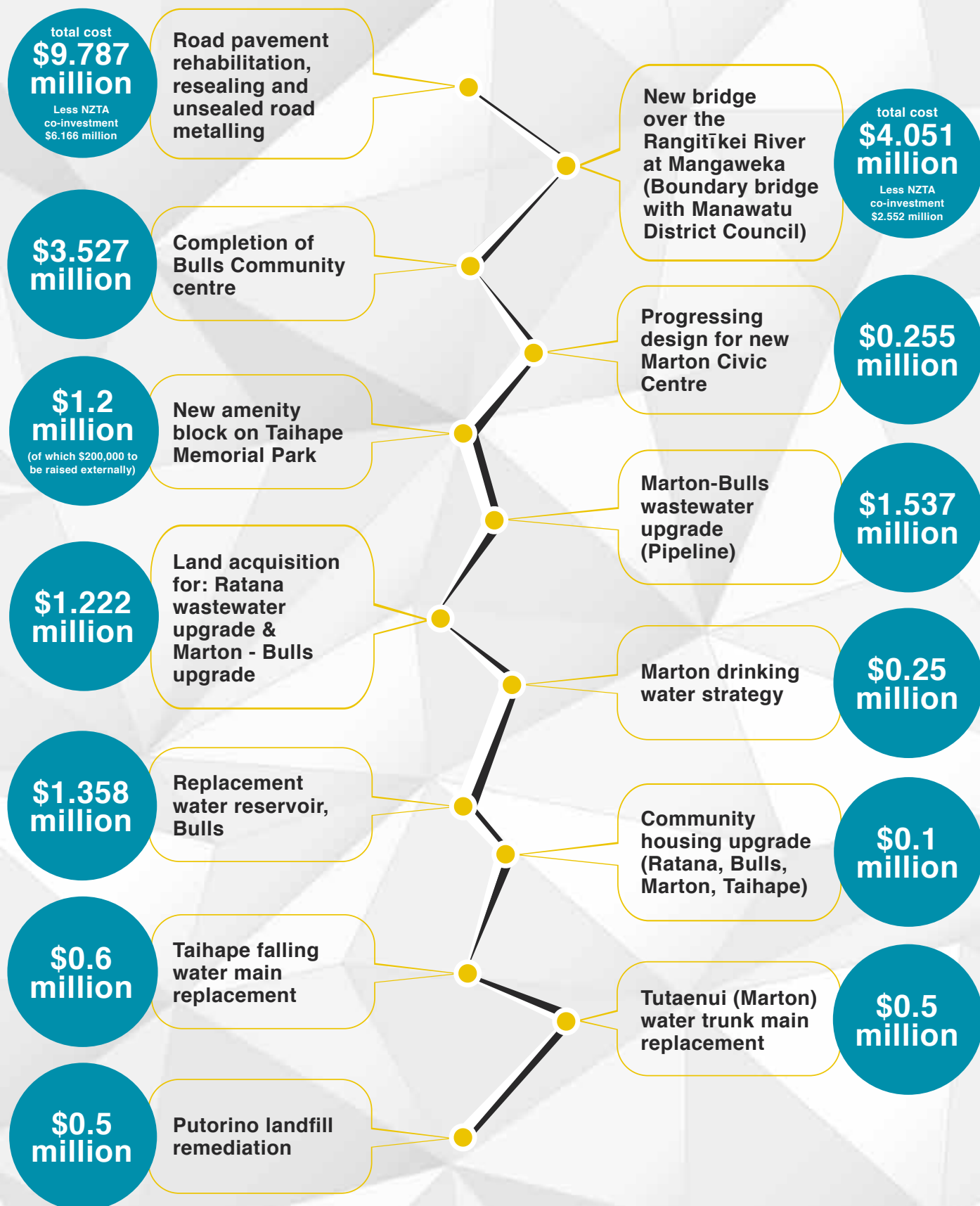
Many of you will be aware that the Government is currently giving consideration to how the three waters activities (i.e. drinking water, wastewater and stormwater) are best managed and how to best address the funding needs of local government. This work could result in far-reaching changes in how local councils function, with decision expected later in the year. This draft Annual Plan has been prepared assuming no changes to current arrangements.

Council's preference is to continue to work with our communities to help shape the District's destiny as far as we can. This is why the Long Term Plan placed emphasis on promoting economic development. This is the year when strategies will start to materialise into actions. Council has already taken steps to incentivise development in the District, through a range of policies. Complementing this is a much invigorated programme for youth, including the recent formation of a Youth Council, and a stronger partnership with Iwi.

Ultimately, Council depends on the willingness of the community to engage – not only by telling us what you think, through our various consultations and survey, but also through leadership and initiative. The skate park in Marton's Centennial Park and the Hautapu River Parks project in Taihape Memorial Park (one of New Zealand's earliest scenic reserves) are wonderful examples of this. But so too is the interest shown in various events and festivals held during the year, and providing volunteer support with planting and in the libraries. We are fortunate to live in a community that is compassionate about others and passionate about what the Rangitikei can provide.

We rely on each of you to help make this an even better place to live. So the most important question in the submission form is the last one: it is deliberately open-ended – for you to raise any matter which you want Council to consider as it plans for the year ahead.

# MAJOR PROJECTS PLANNED FOR 2019/20





1

## Rubbish and recycling

In the 2018-28 Long Term Plan Council proposed introducing a fortnightly kerbside recycling and weekly rubbish collection service in Bulls, Marton, Hunterville, Mangaweka and Taihape. However, the results from consultation were inconclusive and a survey of households in these towns (and Scotts Ferry and Koitiata) was undertaken in October 2018. As a result, Council decided to seek Expressions of Interest (Eoi) to assess the interest in the market and to get an indicative price for providing this service.

It was planned to have this Eoi ready by the end of January, but Council decided to defer doing this. There is considerable uncertainty about recycling opportunities, largely the result of the

policies introduced by China in 2017 which banned or restricted the import of a number of different products including low-quality plastics. These policies became effective in January 2018 and have been followed by others. Prices for recyclables in international markets have dropped dramatically. Lower sale prices mean that exporters of recyclables are facing significant financial pressure, so it is not an opportune time to seek prices for the proposed new service.

At this stage, it is intended to review it in the future.

Recycling facilities at Council's waste transfer stations will continue to be available.

2

## The new Bulls Community Centre

Construction started in December 2018 with a completion date of December 2019. This is as projected in the 2018-28 Long Term Plan. The new centre should be fully functional in early 2020. At that time, Council's use of the current Town Hall and Information centre buildings will end and these sites sold. Council will also vacate the Library building. A group will be formed to look at options for the Library site.

3

## The proposed Marton civic centre

Following consultation in the 2016/17 Annual Plan, Council purchased three heritage-listed buildings (Cobbler/Davenport/Abraham & Williams) on the corner of High Street and Broadway, Marton, to become the new site for Council's administrative headquarters and Marton Library.

A feasibility study/concept design is being done on the two principal options – retaining all the street facades and key elements of these buildings (the main reason for the heritage listing) and upgrading or demolishing all three structures and constructing an entirely new building. There will be a separate consultation with the community, probably in July-August 2019, on these options. There has already been a preliminary assessment of the indicative cost of the status quo option (i.e. remain on current sites and upgrade/develop as required to provide future-fit facilities); this will be further refined to enable a direct comparison with the options to develop the Broadway/High Street site.

A Council decision based on a business case currently being prepared is planned for September 2019.

## New amenity block on Taihape Memorial Park

Last year, as part of the 2018-28 Long Term Plan consultation, Council signalled its decision to build a new changing, shower and toilet facility in the Park. This will be done on the site beside the No. 3 field and incorporating a portion of the last tennis/netball court.

Council representatives have since met with Clubs Taihape to agree a process for finalising the design for a project that would fulfil the facility requirements of both organisations. A design brief is close to being finalised. It indicates two potential build options:

1. A two-storey building, with the amenity facilities at ground level and the Clubs Taihape/Community facilities on the upper level.

2. Two single level buildings connected by a covered walkway (or similar).

Clubs Taihape has a preference for option 1, and to undertake the project as a single build. That would mean Council is the owner of the building and it would require all of the funding to be secured prior to the build. Council has yet to decide which option it supports.

A budget provision of \$1.2 million for the amenities facility is included in the draft 2019/20 Annual Plan, with \$200,000 to be raised externally.

At this stage, the grandstand and toilets near the Memorial gates will be left as they are, apart from basic maintenance.

## The exposed historic Putorino landfill

During 2018, following substantial rainfall, the Rangitikei River changed its course in the river bed, scouring out land on the right bank near Te Hou Hou Road. This exposed a landfill, established by the Rangitikei County Council, which had not been used since the early 1990s.

Horizons Regional Council has issued a consent allowing the Rangitikei River to be diverted to its earlier channel, thus allowing an opportunity to examine the dump more closely. The likely approach is to erect a barrier on the river bank to prevent further erosion by the river, should it change its course again. That will cost an estimated \$500,000.

## PFAS

PFAS – per and poly-fluorinated alkyl substances - refers to a group of around 3,000 chemical compounds that have been extensively manufactured and used worldwide since the 1950s as furniture protectants, floor wax, treated fabrics, paper products, non-stick cookware, food packaging, insecticides and specialised fire-fighting foams. These foams have been (but are no longer) used for flammable liquid fires at airports and other fire training sites across New Zealand.

In late 2016 the presence of PFAS was detected in groundwater around the Ohakea Air Force Base. Low levels of PFAS were also found in four of the five bores that are the source of the Bulls water supply. The Ministry of Health has advised that these low levels present no public health risk. However, Council has decided to send samples of Bulls water overseas for Total Oxidisable Precursor (TOP) Assay testing to determine the levels of PFAS contamination. This test is not currently available in New Zealand. Cost will be dependent on the number of tests and the laboratory selected, but is unlikely to exceed \$5,000.



7

## Replacement water reservoir, Bulls

An outcome of the recent scrutiny of the supply of water to Bulls is the planned construction of a new reservoir in Bulls. The present storage is only 15% of fire-fighting requirements; the reservoirs have a poor seismic rating; and pressure does not meet fire-fighting requirements (50 litres per second).

8

## Marton water

The discolouration, odour and taste problems in Marton's water during January 2019 have occurred periodically over the years. They are the consequence of the water source - B and C Dams - which has seasonal algal blooms and high concentration of manganese. The treatment plant is not always able to ensure no variability in the quality of drinking water put into the reticulation network, but the supply has been consistently compliant with the drinking water standards.

Council is currently undertaking a "Marton Water Supply Strategy" to consider the raw water source, treatment, storage and the reticulation network. It is intended to have that work completed by September 2019 with the expectation that it will be implemented through the 2020/21 Annual Plan and/or the 2021-31 Long Term Plan processes.

9

## Marton/ Bulls wastewater

The 2018-28 Long Term Plan was explicit that the discharge of Marton's wastewater into the Tutaenui Stream would be ending. The indicative business case accepted by Council was that piping the wastewater to discharge onto land south-west of Bulls was the most cost-effective solution. The project will be associated with a similar shift from the Bulls wastewater plant discharging into the Rangitikei River, so one resource consent from Horizons Regional Council would cover the two discharges.

This is the largest and most complex infrastructure project undertaken in the District. During 2019/20, the necessary area of land south of Bulls will be purchased and design work carried out for the pipeline between Marton and Bulls.

10

## Improving recreational facilities

The major upgrade to the *skatepark at Centennial Park*, Marton, included in the 2018-28 Long Term Plan, started in February 2019 and will be finished in April 2019. It is expected to be a drawcard for a large number of visitors as well as being attractive to locals. The planned extensive upgrade of the *playground beside Marton Memorial Hall* (again with substantial external funding) will have a similar effect. These projects – the *Hautapu River Parks project* in Taihape is another – are significant upgrades to Council parks; Council proposes to increase the Parks Upgrade Partnership scheme by \$50,000 (making a total of \$100,000) so that it is able to make an appropriate financial contribution to such initiatives.

One important facility currently lacking at Centennial Park and the Marton Memorial Hall playground is public toilets, similar to those being developed in Follett Street alongside Marton Park. The toilets inside the Centennial Park pavilion and the Marton Memorial Hall are not able to be converted to use from outside these buildings.

An application is being made to the third round of the Government's Tourism Infrastructure Fund for \$270,000, which (if successful, and combined with Council's contribution of \$30,000) would provide similar facilities as that planned for Follett Street.

## Supporting the new St John Ambulance station in Taihape

Although an integral part of responding to emergencies, ambulance services do not receive funding from central government (as the Police and Fire and Emergency New Zealand do). St John Taihape needs to build a new station, partly to satisfy requirements for having double-crewing, partly to satisfy regulations around the strength of buildings used for responding to emergencies (i.e. the IL4 building standard).

The maximum price of the new facility is estimated at \$837,043 (including a 9% contingency). The objective is to have it opened and operating by the end of 2020. The trigger for letting the construction contract will be securing 80% of the total cost.

Council proposes to include a \$50,000 provision in 2019/20 for this project.

## Improving the District's resilience to climate change

The disruptive effect of climate change was noted as one of the significant forecasting assumptions in the 2018-28 Long Term Plan. For Council the biggest impact is on the District's roads, where substantial rainfall requires larger culverts to be installed to minimize damage, disruption to travellers and cost. This is reflected in the roading programme which has been reprioritized accordingly. There are areas of the District which are likely to be flooded when severe rainfall events occur. This means larger investment in stormwater systems (especially in Marton) and continued advocacy to central government about long-term solutions for communities like Whangaehu and Kauangaroa.

Council also looks for ways in which it can reduce its carbon footprint. One example is the new Bulls Community Centre which has been designed to have a low energy use requirement. Another example is bringing in hybrid vehicles into the fleet.

## The cat problem

The submissions which Council received late last year on the revised Animal Control Bylaw all supported financial assistance from Council for de-sexing of cats, and a proposal to include a \$5,000 provision in the draft 2019/20 Annual Plan to assist owners with the costs. This will be funded through the Uniform Annual General Charge.

In reviewing the proposed procedures for this trial, a one-year programme, Council considered that a 50% subsidy was appropriate (i.e. \$65 on a total fee of \$130) and that micro-chipping should

be included – a view strongly supported by the Companion Animal Council. Over time, de-sexing and microchipping will lead to a reduction in the number of unwanted cats.

If adopted, the programme would run for two or three weeks during 2019 only, following extensive publicity. Based on costings previously obtained, it would cover around 120 cats. It would be limited to domestic cats (not unwanted cats) which are owned by holders of the Community Services card.



## What matters most to you?

The 2018-28 Long Term Plan sets out the programme of work and the nature of services which Council intends to deliver over this period. There are many projects listed there which will be undertaken, but which haven't been mentioned in this Consultation Document, such as making the District more attractive to do business in, strengthening relationships with Iwi, maintaining

the District's swimming pools, gaining better control over stormwater, and ensuring roads and bridges are safe for travel. However, new opportunities arise, circumstances change, and central government policies and priorities can shift. Council's purpose is both to serve and lead the community, so it is important for Council to know what is top of mind for you.

## References

**More detail of what is contained in our draft Annual Plan, and in the following supporting documents, can be found on our website – [www.rangitikei.govt.nz](http://www.rangitikei.govt.nz). Supporting information includes:**

- Draft 2019/20 Annual Plan
- Adopted 2018-28 Long Term Plan
- Adopted asset management plans for Roading and 3 Waters
- Proposed Memorial Park Amenities Facility and Clubs Taihape Facilities – design brief, February 2019
- St John Taihape – New ambulance station, August 2018
- Marton Civic Centre feasibility proposal, March 2019
- Proposed extension of the Marton Memorial Hall playground – report to Assets/Infrastructure Committee, 21 March 2019
- Local Government New Zealand – Draft sector position on climate change mitigation (2018): [www.lgnz.co.nz/our-work/publications/draft-sector-position-on-mitigation/](http://www.lgnz.co.nz/our-work/publications/draft-sector-position-on-mitigation/)
- National cat management strategy discussion paper (2017): [www.nzcac.org.nz/images/downloads/nz-national-cat-management-strategy-discussion-paper.pdf](http://www.nzcac.org.nz/images/downloads/nz-national-cat-management-strategy-discussion-paper.pdf)



# THE FINANCIALS

## Rates

The proposed rate income increase for 2019/20 will be 3.96%. This is less than what we said it would be in the 2018-28 Long Term Plan for this year (5.90%).

The decrease is due primarily to the deferred implementation of kerbside rubbish and recycling in urban areas. There is also less debt servicing costs because of slower progress with several major capital projects during 2018/19. Please note that many properties will receive a lower or higher increase to their rates than the overall rate increase. The draft Annual Plan includes indicative rating impact tables for various types of properties – urban, rural, commercial and industrial.

## Debt

We have budgeted Council's gross debt (i.e. borrowing) to be \$11.568 million by 30 June 2020, compared with the Long Term Plan projection of \$17.320 million. This is an outcome of slower progress with several major capital projects during 2018/19.

## Summary changes in financial projections

More detailed financial information is contained in the full draft of the 2019/20 Annual Plan.

	Actual 2017/18 \$'000	Long-term Plan 2018/19 \$'000	Forecast 2018/19 \$'000	Long- term Plan 2019/20 \$'000	Draft Annual Plan, 2019/20 \$'000
Total operating revenue	33,104	33,627	33,439	34,923	38,106
Total operating expenditure	32,200	32,039	32,025	34,013	32,673
Capital expenditure	12,831	28,245	19,351	21,489	26,978

# HOW TO HAVE YOUR SAY...

**We invite you to provide us with feedback on any matter in this document or anything else you want to raise by:**

- completing the written submission form – remove this from the document and send it to Freepost 172050;
- completing an Online submission form – found at [www.rangitikei.govt.nz/annualplan19-20](http://www.rangitikei.govt.nz/annualplan19-20)
- participating in the public meetings which are being held across the District (see below):

**Note: We are also (separately) consulting on the Schedule of Fees and Charges for 2019/20.**

## KEY DATES:

### 1 April

- Consultation period opens. One month consultation period until 1 May

### 9 May (and 10 May if more time is required)

- Hearing of oral submissions (in Marton)

### 2 - 28 April

- Public meetings held across the District (see below)

### 30 May

- Council deliberates on all submissions (written and oral)

### 1 May

- Consultation period closes at midday

### 27 June

- Council adopts the 2019/20 Annual Plan

## PUBLIC MEETINGS:

**The Council is holding public meetings across the District. Some are in association with Community Boards and Community Committees as below; others will be separately advertised.**

**Bulls - Bulls Town Hall**  
Tuesday, 2 April - 5.30pm

**Mataroa - Mataroa Community Hall**  
Wednesday, 3 April - 5.30pm

**Turakina Community Committee - Ben Nevis**  
Thursday, 4 April - 7.30pm

**Moawhango - Moawhango Hall**  
Saturday 6 April - 3pm

**Mangaweka - Mangaweka Hall**  
Monday 8 April - 5.30pm

**Ratana Community Board - Office, Ratana Paa**  
Tuesday 9 April - 6.30pm

**Taihape Community Board - Taihape Town Hall**  
Wednesday, 10 April - 5.30pm

**Tutaenui - Tutaenui Hall**  
Thursday 11 April - 5.30pm

**Pukeokahu - Pukeokahu School Hall**  
Saturday, 13 April - 3pm

**Koitiata - Koitiata Hall**  
Sunday, 14 April - 2pm

**Scotts Ferry - Parewanui Road**  
Sunday 14 April - 4.30pm

**Huntermville Community Committee - Huntermville Town Hall**  
Monday, 15 April - 6.30pm

**Marton Community Committee - Council Chambers**  
Wednesday, 17 April - 7pm

**Kauangaroa - Kauangaroa Marae**  
Sunday, 28 April - 3pm

**Otairi School**  
Details to be confirmed

## CONTACT:

**46 High St, Private Bag 1102  
Marton 4741**

**P: 0800 422 522 (24 hrs)**

**E: [info@rangitikei.govt.nz](mailto:info@rangitikei.govt.nz)**



**RANGITIKEI**  
DISTRICT COUNCIL  
*Making this place home.*



# SUBMISSION FORM

## 2019/20 ANNUAL PLAN

### Submissions close at 12 noon on Wednesday 1 May 2019.

Return this form, or send your written submission to:

**Annual Plan Consultation  
Rangitikei District Council  
Private Bag 1102  
Marton 4741**

**Email:** [annualplan@rangitikei.govt.nz](mailto:annualplan@rangitikei.govt.nz)

### Oral submissions

**Oral submissions will be held at the Marton Council Chambers on Thursday 9 May 2019.**

(If more time is needed, the hearing will extend to Friday 10 May 2019.)

If you wish to speak to your submission, please tick the box below.

☐ **I wish to speak to my submission.**

You are allowed ten minutes to speak, including questions from Elected Members.

If you have any special requirements, such as those related to visual or hearing impairments, please note them here.

---

---

---

---

---

---

---

---

### Privacy

All submissions will be public. Please tick this box if you would like your personal details withheld (note: your name will remain public)

☐

**Your name:**

---

---

**Organisation:** (if applicable)

---

---

**Email address:**

---

---

**Preferred contact phone number:**

---

---

**Your postal address:**

---

---

---

Do you think Council should increase the annual funding to community-led projects which improve facilities on Council's parks, such as Marton Memorial Hall playground and the Hautapu River Parks by \$50,000?

☐ **Yes**    ☐ **No**

What increase would you prefer Council to make?

---

---

---

---

Do you agree with Council's proposal to contribute \$50,000 to the cost of the new St John Ambulance Station in Taihape?

☐ **Yes**    ☐ **No**

If no, what increase would you prefer Council to make?

---

---

---

---

What suggestions do you have for Council to take up which would increase the District's resilience to climate change?

---

---

---

---



Do you think Council should provide funding for the de-sexing and micro-chipping of cats?

☐ **Yes**    ☐ **No**

If yes, should it be more than \$5,000? If so, how much? Should the programme run longer than one year?

Do you think Council should also help with the costs for euthanising unwanted cats caught in traps borrowed from the Council?

What other ideas, issues or problems would you like Council to address next year?

*Attach additional information if you wish.*

2. Fold here

Freepost Authority 172050



Rangitikei District Council  
Private Bag 1102  
Marton 4741



Please fold both ends of this form inwards along the dotted lines in order and fasten with tape where indicated above.

1. Fold here

Tape here

