



HAVE YOUR SAY ON OUR LONG TERM PLAN

He aha tō tirohanga whakamua mō Rangitikei?



Submissions close at 5pm, Sunday 7 April 2024.

The Long Term Plan (LTP) is a large and important document that sets out the Council's plans and budget for the next 10 years. Every three years, the LTP is reviewed and refreshed to make sure we're still heading in the right direction for our District's future.

Council wants to hear feedback from all ages and ethnicities, from townships and rural communities, right across the District on the Long Term Plan 2024-2034. To find more information on any part of this process, the LTP or this document, you can:



Visit our website www.rangitikei.govt.nz



Follow us in Facebook - www.facebook.com/RangitikeiDC



Contact our Council staff by calling **0800 422 522** or contact an Elected Member



Email us at info@rangitikei.govt.nz



Attend one of our **Community Engagement Events** or **Hui-a-Marae** throughout the District.

For full details scan QR code above or visit our website.

COMMUNITY ENGAGEMENT EVENTS

Where	When	Start Time
Hunterville Town Hall	Monday, 11 March	6:30pm
TRAK - Council Chambers	Tuesday, 12 March	9am
Tutaenui Hall	Tuesday, 12 March	6:30pm
Te Matapihi, Bulls	Wednesday, 13 March	11am - 2pm
Ohingaiti Truckstop	Thursday, 14 March	6pm
Scotts Ferry Fire Station	Sunday, 17 March	3pm
Omatane Hall	Monday, 18 March	6:30pm
Marton Village Green	Tuesday, 19 March	11am - 2pm
Taoroa Hall	Tuesday, 19 March	6pm
Ratana Playground and Whānau Space	Saturday, 23 March	11am
Mangaweka - Awastone	Sunday, 24 March	10.30am
Pukeokahu Hall	Sunday, 24 March	6pm
Papanui School Hall	Monday, 25 March	6pm
Youth Council - Council Chambers	Tuesday, 26 March	5pm
Ngā Awa Block, Taihape	Wednesday, 27 March	11am - 2pm
Koitiata Hall	Tuesday, 2 April	7pm

KEY DATES



CONSULTATION - 8 March to 7 April 2024

We need to receive your feedback by **5pm, Sunday 7 April 2024.**



HEARINGS - 18 April 2024

We'll hear from you and what you think of our plans.



DELIBERATIONS - 16 May 2024

Then our Council will deliberate and make their decisions.



ADOPTION - 20 June 2024

Our Mayor and Councillors will vote to adopt the Long Term Plan.



ACTION - 1 July 2024

Our team will get on to putting the Long Term Plan into action.

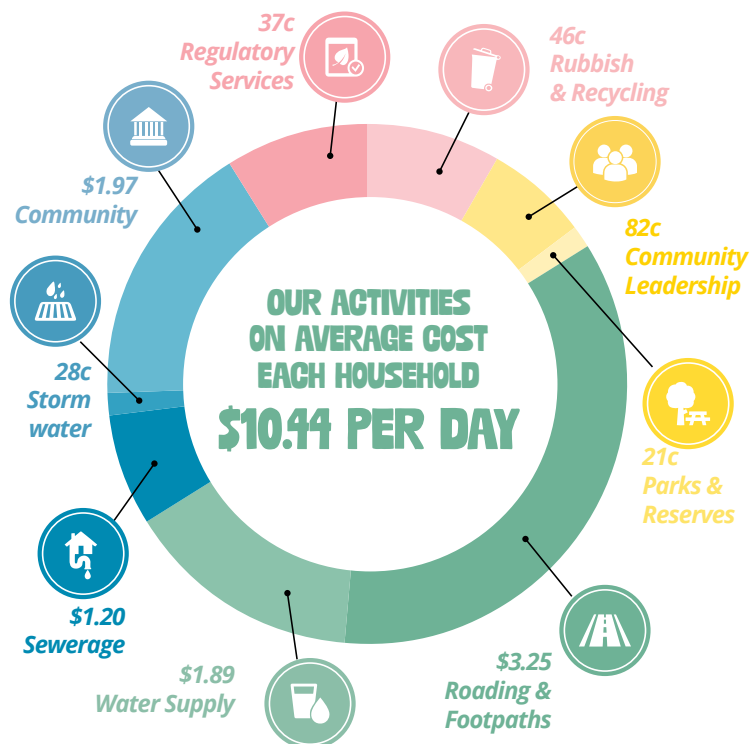
WHAT WILL OUR RATES LOOK LIKE?

Proposed average rates increase

Y1	Y2	Y3
11.50%	8.90%	10.6%*

For full details refer to pages 28-29 of our Consultation Document.

Daily rates breakdown



WHAT ELSE ARE WE CONSULTING ON?

- Proposed Schedule of Fees and Charges for 2024/25
- Draft Development Contributions Policy
- Draft Rates Remission Policy
- Draft Revenue and Financing Policy
- Draft Significance and Engagement Policy

WHAT DO YOU THINK WE SHOULD DO?

Refer to our Consultation Document for the full details on these three key choices.



KEY CHOICE 1 | MARTON POOL

Should we open the Marton pool all year round?

OPTION 1 *Our preferred option* ✓

The Marton pool would remain only open on a seasonal basis.

This means that the \$222,000 budgeted for in the previous LTP would be removed and no increase allowed for in the 2024/25 year, or future years. This would have no impact on budgeted increases but would instead reduce the size of the Council's current deficit.

WHAT WOULD THIS LOOK LIKE FOR US?

Impact on rates	Reduction of \$222,000 from 2024/25 (LTP 2021-31)
Impact on debt	Nil
Impact on levels of service	Unchanged due to no increase of opening hours

OPTION 2

From 2024/25 the Marton pool would open all year round.

This means the \$222,000 budgeted for in the previous LTP would be retained from 2024/25; and an additional \$135,000 would be added to the budget from 2024/25 – bringing a total of \$357,000 annual increase.

WHAT WOULD THIS LOOK LIKE FOR US?

Impact on rates	Total \$357,000 (An increase of 1.2% on rates)
Impact on debt	Nil
Impact on levels of service	Increase in service levels as pool would remain open all year



KEY CHOICE 2 | KERBSIDE COLLECTION

How do you want to roll out the kerbside collection requirements?

At the beginning of 2023 MfE announced a move to standardise kerbside recycling across the country.

OPTION 1 *Our preferred option* ✓

We roll out three bin kerbside collection services in one go starting January 2027.

- **Organic Bin** – food and garden waste weekly.
- **General Waste Bin** – landfill waste collected fortnightly.
- **Recycling Bin** – recyclable plastic, steel, aluminum, paper, cardboard collected fortnightly.

Council would supply three bins to each urban household in our District.

WHAT WOULD THIS LOOK LIKE FOR US?

Impact on rates*	1.7% in 2026/27 and 1.5% increase in 2027/28
Impact on Debt	Increase \$1.5m
Impact on levels of service	Increase in service levels

OPTION 2

We stagger the provision of a recycling bin (issued in January 2027) and an organic waste bin (issued in January 2030).

Residents need a separate contract for disposing of their general waste. The kerbside collection of the recycling bin will start in January 2027 followed by the addition of the food scraps bin in January 2030, each with additional costs as and when they start.

WHAT WOULD THIS LOOK LIKE FOR US?

Impact on rates*	0.8% in 2026/27 and 0.7% in 2027/28 and 0.6% in 2029/30 and 0.6% in 2030/31
Impact on debt	Increase \$1m
Impact on Levels of Service	Increase in service levels



KEY CHOICE 3 | MARTON MAIN STREET UPGRADE

Should we revitalise the Marton Town Centre?

Thriving town centres are essential for the wellbeing of our communities.

They provide spaces where our community can connect with each other, support economic growth, and provide local services for our communities. To achieve the outcomes sought, significant investment is needed.

OPTION 1 *Our preferred option* ✓

Streetscape revitalisation for Marton

WHAT WOULD THIS LOOK LIKE FOR US?

Impact on rates	0.36% of rates from Year 3
Impact on Debt	\$2.1 million
Impact on levels of service	Increased levels of service

OPTION 2

Status quo - Do not invest in Streetscape revitalisation for Marton.

WHAT WOULD THIS LOOK LIKE FOR US?

Impact on rates	Nil
Impact on debt	Nil
Impact on Levels of Service	Unchanged

KŌRERO MAI

We need to receive your feedback by 5pm on Sunday, 7 April 2024

