



RANGITIKEI
DISTRICT COUNCIL
Making this place home.

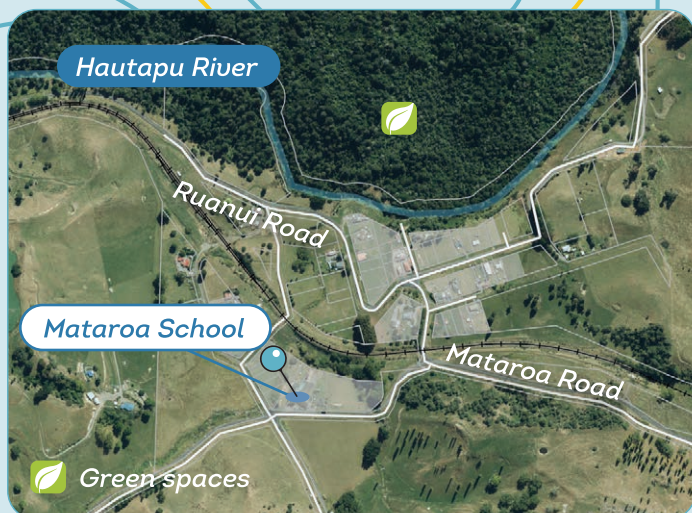
Pae Tawhiti RANGITIKEI BEYOND

*Kōrero
Mai*

PLANNING OUR PLACES AND SPACES

MATAROA, MOAWHANGO, UTIKU & ŌHOTU SUMMARY





MATAROA

Mataroa is a small settlement just north of Taihape that was established alongside the Main Trunk Rail Line.

The community has a primary school and is next to the Paengaroa Scenic Reserve.

With around 20 houses in the settlement, there is a small area zoned for Residential use.

Without reticulated wastewater services, more housing on small sections will be challenging.

There could be an opportunity for lifestyle blocks to be developed near the settlement.

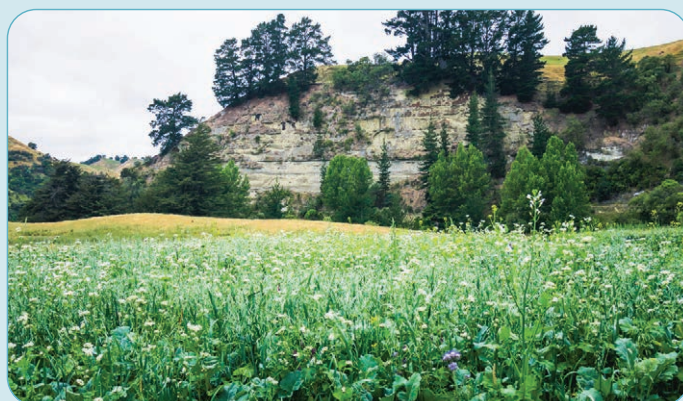
While there is no commercial zone, a number of properties have small scale businesses operating from them.

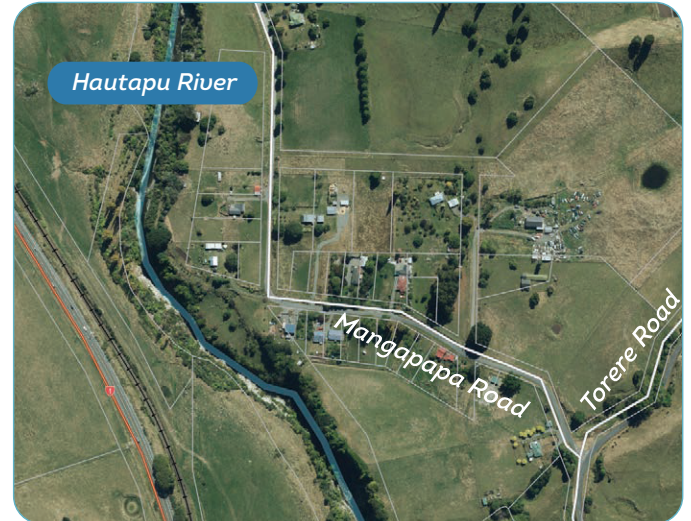
MOAWHANGO

Moawhango is one of the district's northernmost settlements located in a quiet valley on the Napier-Taihape Road.

The settlement has a primary school, the Whitikaupeka Church and Batley's Memorial Chapel.

Moawhango Marae is a key part of the community, associated with Ngāti Whitikaupeka.





UTIKU

Utiku is a small lifestyle settlement situated next to the Hautapu River, just south of Taihape.

The village is home to The Wool Company and a Ravensdown depot.

Both State Highway 1 and the North Island Main Trunk Line separate the settlement in two.

Residential Zone

The settlement is mainly zoned as Residential and without reticulated wastewater services, more housing on small sections will be challenging.

There could be an opportunity for lifestyle blocks to be developed near the settlement.

Commercial Zone

Only the sites associated with The Wool Company are zoned for commercial purposes.

We think future industrial and commercial activities will be provided in Taihape.



ŌHOTU

Ōhotu is a small lifestyle settlement, just off State Highway 1 and over the Hautapu River. It is halfway between Taihape and Ōhingaiti.

With around ten houses the settlement is zoned as Rural.

Without reticulated wastewater services, more housing on small sections will be challenging.

There could be an opportunity for lifestyle blocks to be developed near the settlement.



FEEDBACK FORM

Attach additional pages if required.

Have your say as
we create a spatial
plan for our future

Kōrero
Mai

Feedback closes 19 April 2022

Mataroa,
Moawhango,
Utiku & Ōhotu

My settlement is...

☐ Mataroa ☐ Moawhango ☐ Utiku ☐ Ōhotu

My connection to this place is...

☐ I live there ☐ I visit often ☐ I used to live there

☐ Other _____

What might your settlement look like in 2050?

What are your aspirations for future housing development (residential/lifestyle blocks) in and around your settlement? Where should new houses be located?

What business (industrial/commercial/retail) opportunities do you think should be enabled? Where would they be located?

What are the opportunities and challenges for your community?

How could the transport network be improved?

What are the significant nature networks in your community? How can we celebrate them and create greater connections with these areas?

What should be protected for future generations?

What community facilities are important for you?

Further comments

Further comments

- ☐ I own a piece of land I want rezoned
- ☐ I want to receive project updates
- ☐ I want to receive Council updates
- ☐ I want to be in the draw to win one of three prizes valued at \$200 each

Please provide your details if you ticked any of the above.

Name:

Email:

Phone:

Address:



ReplyPaid Authority Number 172050



Rangitikei District Council
Pae Tawhiti Rangitikei Beyond
Private Bag 1102
Marton 4741



MOAWHANGO
MATAROA
ŌHOTU
UTIKU

Kōrero Mai

Have your say

Now is your chance to shape the future of your settlement!

Fill out the survey, tear it off and post-it back, or fill it out online.

Have your say by 19 April 2022.


More information

We've got lots of information to share – and you might be interested in more background information or other settlements. We have a more detailed discussion document available for you to read, and share your views.

If you want to have a chat in person, or online – go online to find out where our workshop sessions will be held. Please note that public sessions are subject to Covid-19 Traffic Light setting regulations.

You can find the discussion document and other supporting information:

 On our website www.rangitikei.govt.nz/paetawhiti

 In any of our libraries or service centres in Taihape, Marton and Bulls.

Want to know more?

Contact the Project Lead: Katrina Gray
on 0800 422 522 or katrina.gray@rangitikei.govt.nz

Purpose of Pae Tawhiti Rangitikei Beyond

Pae Tawhiti Rangitikei Beyond is a district-wide spatial strategy and plan. We aim to capture our community's aspirations for the future.

The plan will provide a blueprint of how we want our communities to develop.

It will provide high level outcomes and actions that will guide Council projects that plan for and respond to growth and development - including our infrastructure planning and District Plan Changes (the rules that guide development).

Purpose of this Summary Document

We have designed this summary document to provide an overview of the key considerations for your community. We want to create a conversation with the community about the future.