

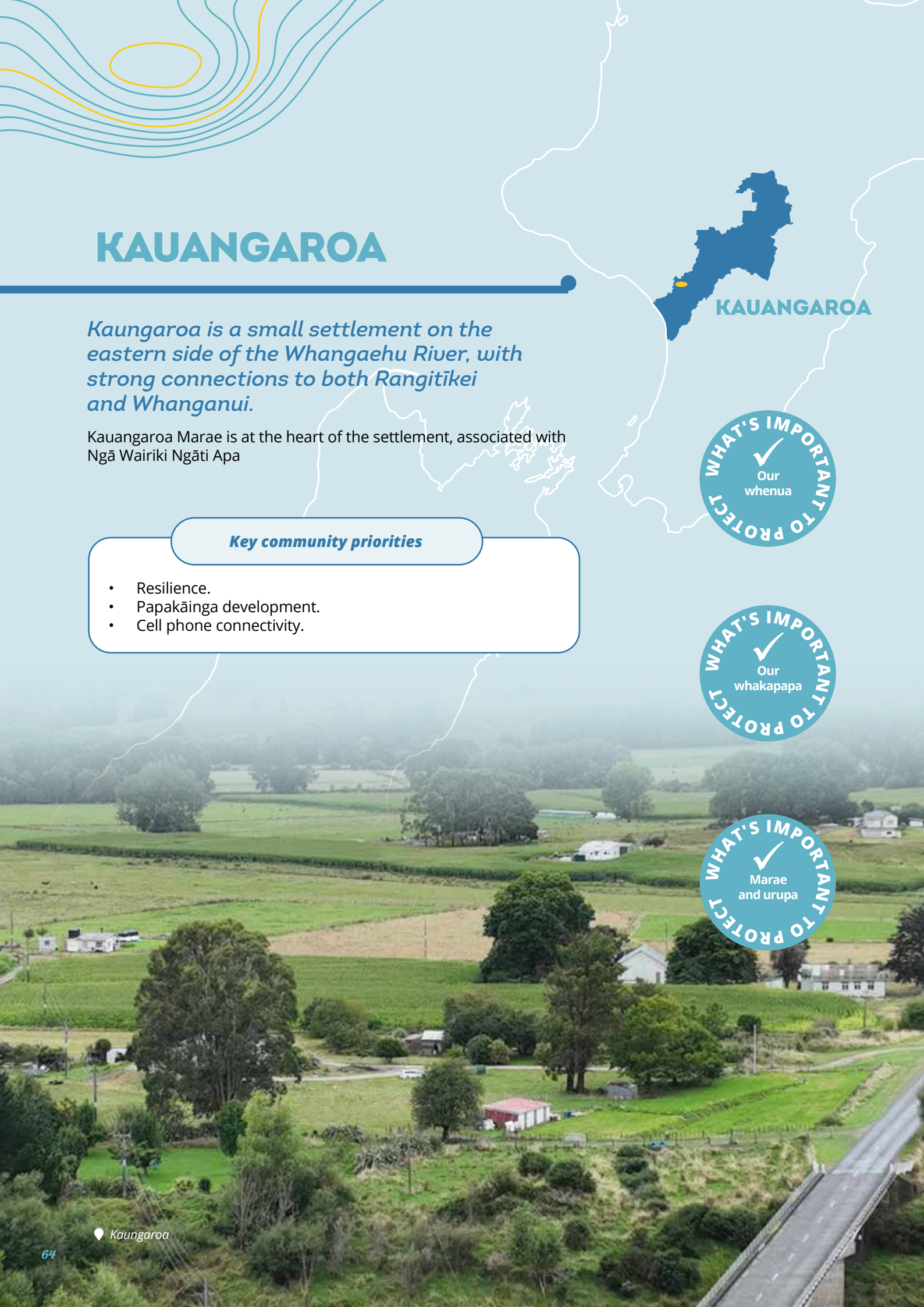
# KAUANGAROA

*Kauangaroa is a small settlement on the eastern side of the Whangaehu River, with strong connections to both Rangitikei and Whanganui.*

Kauangaroa Marae is at the heart of the settlement, associated with Ngā Wairiki Ngāti Apa

## Key community priorities

- Resilience.
- Papakāinga development.
- Cell phone connectivity.





# VISION FOR *Kauangaroa*

**Kauangaroa** is resilient and thriving community, with papakāinga developed around Kauangaroa Marae at the heart.

### Key Themes




- 1 Papakāinga
- 2 Natural Environment

### Key Spatial Moves




- RV Rural Village
- R Increase resilience

### Legend

#### District Plan Zones

-  Rural Zone
-  Papakāinga
-  Nature Network

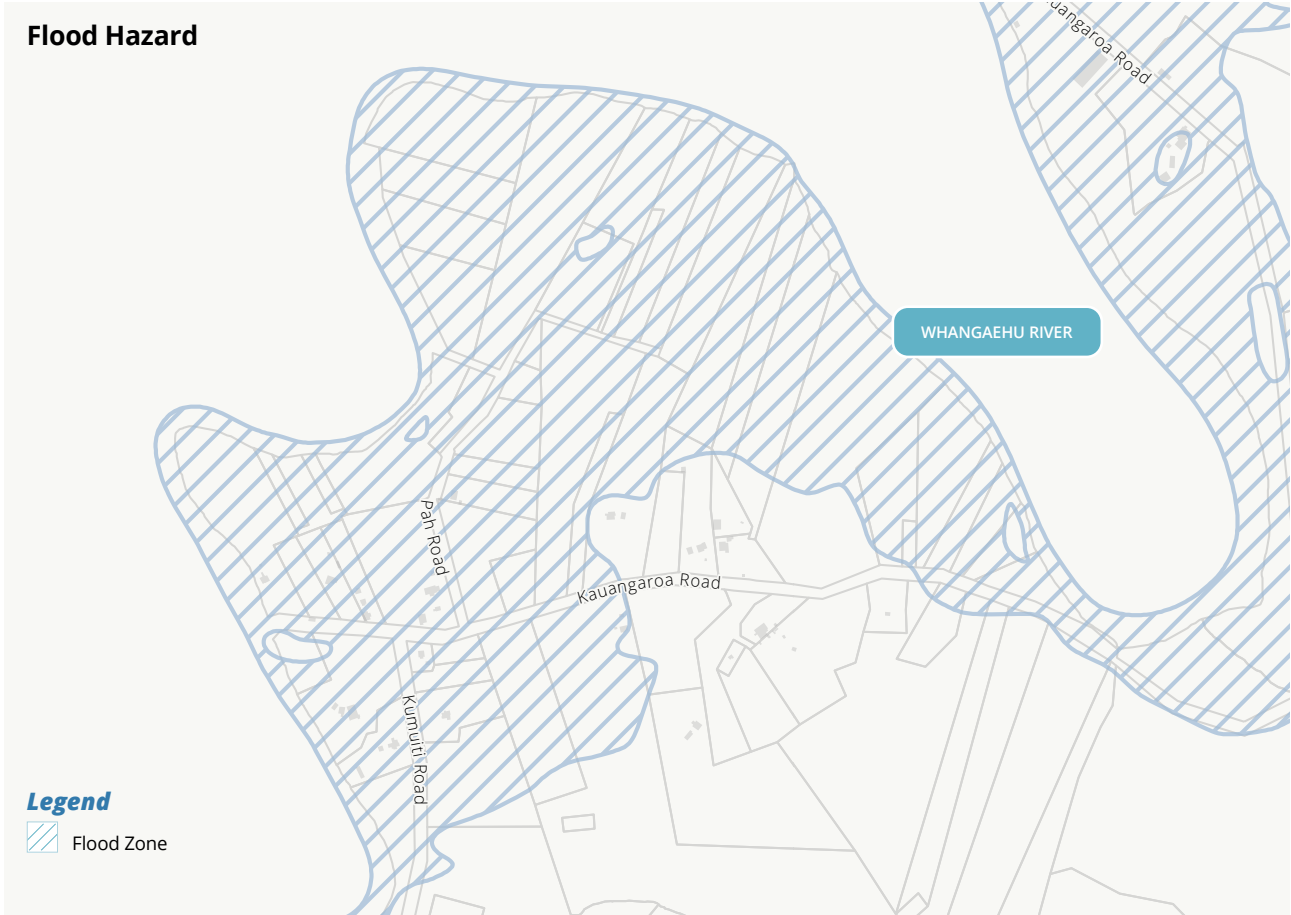
#### Map Features

-  Building Footprint
-  Property Boundaries
-  River

Kauangaroa Road

WHANGAEHU RIVER

*Kauangaroa*



**1** *Papakāinga*

Future housing demand and population growth will be associated with the development of papakāinga housing that enables tangata whenua to return to Kauangaroa.

The area is zoned as Rural, with an area already identified in the District Plan for future papakāinga development. Kauangaroa has been impacted by floods in the past and is at significant risk of future flooding.

The area is also at risk from lahar travelling down the Whangaeahu River from the Ruapehu volcano.

**Priorities**

- > Enable and facilitate the development of papakāinga by Ngā Wairiki ki Uta.
- > Increase resilience and reduce risk to residents and the marae from flooding by the Whangaeahu River.

“Population may have increased by 2050 as tangata whenua are drifting back to their Whenua.”

*Community Voice*

**2** *Natural environment*

The community is connected with the natural environment.

Environmental enhancement projects are already well established.

**Priorities**

- > Support community-led environmental restoration projects.

## Action Plan

Quick win <1 year | Short term 1 - 5 years | Medium term 6 - 10 years | Long term 10+

Rangitikei Priority Area	Key Themes	Project		Timeframe	Council's role(s)	Project Partners and Key Stakeholders
Healthy Communities Unique Communities	PAPAKĀINGA	1	1.1	Support iwi and hapū aspirations for papakāinga	⌚ Medium Term	Strategy / Regulation Facilitation / Information Mana whenua Te Puni Kokiri Regional Council
			1.2	Work collaboratively to investigate options and implement solutions to increase community flood resilience.	⌚ Medium Term	Partner Mana whenua Regional Council Community
Healthy Communities	NATURAL ENVIRONMENT	2	2.1	Recognise the work being completed by the Rangitikei Catchment Group that support environmental improvements.	▶▶▶ Ongoing	Facilitation / Information Catchment Group Regional Council Community

Kauangaroa

The actions identified in the Action Plan are not guaranteed to be developed. Council will consider which actions are developed through long term planning processes and collaboration with implementation partners.