

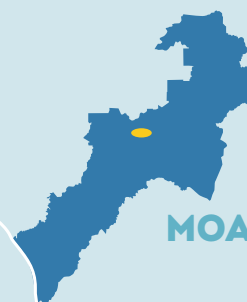
# MOAWHANGO

*Moawhango is one of the district's northernmost settlements located in a quiet valley on the Taihape-Napier Road, part of the tourism corridor with the Hawke's Bay.*

The settlement has strong dual heritage that has two Ngati Whitikaupeka gazetted Marae – Moawhango Marae and Te Riu O Puanga Marae, as well as the Whitikaupeka Whare Karakia and Batley's Memorial Chapel.

The community supports the Moawhango School and the Moawhango Settlers Hall which service the surrounding rural community.

The settlement is currently zoned as Rural and has no reticulated services.



MOAWHANGO



Moawhango



# VISION FOR *Moawhango*

**Moawhango** remains a rural settlement, with a strong community based on intergenerational connectedness and people returning home.

### Key Themes

- 1 Connection
- 2 Housing and jobs

### Key Spatial Moves

- P Papakāinga

*Moawhango*

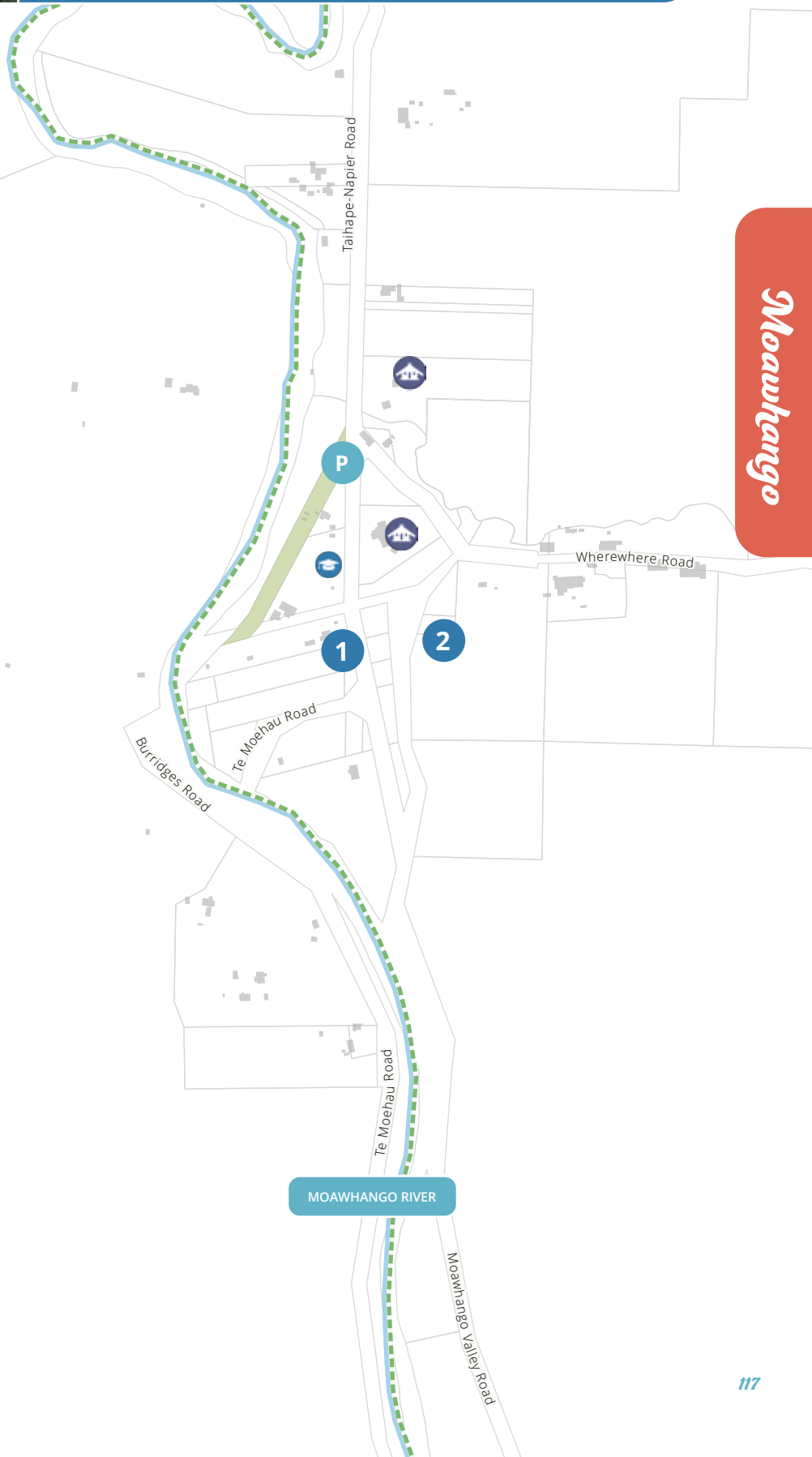
### Legend

#### District Plan Zones

- Rural Zone

#### Map Features

- Building Footprint
- Property Boundaries
- Green space
- River
- Nature Network





Whitikaupeka Whare Karakia - Moawhango



Batley's Memorial Chapel

## 1 Connection

The community is strongly connected to the dual history, culture, and environment in the Moawhango area.

The local marae and hall are the heart of the community.

Locals are leading environmental enhancement projects associated with the Moawhango River.

### Priorities

- > Recognise and celebrate local heritage.
- > Support community-led environmental restoration projects.



Moawhango

## 2 Housing and jobs

It is important to the community that local people stay in the area, and many who have left return home.

For this to occur local housing and jobs are needed.

Ngāti Whitikaupeka have long term aspirations for the development of papakāinga in the area.

Future businesses in the area are likely to leverage off the tourism sector and the location on the Taihape-Napier Road.

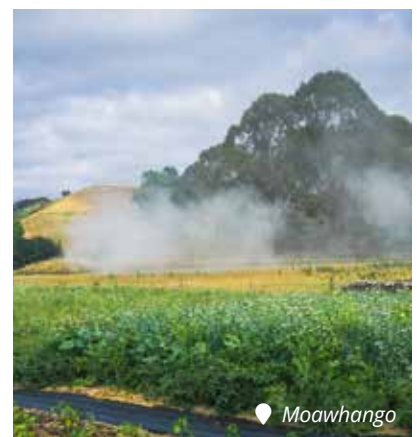
Moawhango also has strong connection to the job market in nearby Taihape.

### Priorities

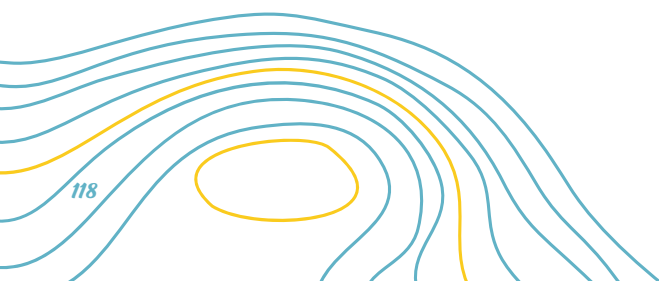
- > Enable and facilitate the development of papakāinga by Ngāti Whitikaupeka.
- > Support the development and establishment of local tourism or primary production opportunities.
- > Facilitate and encourage businesses in Taihape to provide jobs to those who wish to return home.



Moawhango Marae







Moawhango



## Action Plan

Quick win <1 year | Short term 1 - 5 years | Medium term 6 - 10 years | Long term 10+

Rangitikei Priority Area	Key Themes	Project	Timeframe	Council's role(s)	Project Partners and Key Stakeholders
<b>Healthy Communities</b> <b>Connected Communities</b> <b>Unique Communities</b>	LOCAL CONNECTION	1	1.1	Work alongside the community on projects that celebrate local heritage and culture.	 Long Term Supporter Mana whenua Community
			1.2	Recognise work being completed by Ngā Puna Rau o Rangitikei and the Rangitikei sub-group that support environmental improvements	 Ongoing Facilitation / Information Mana whenua RRCC Regional Council Ngā Puna Rau o Rangitikei
<b>Healthy Communities</b> <b>Unique Communities</b>	HOUSING AND JOBS	2	2.1	Review the District Plan approach for: <ul style="list-style-type: none"> <li>• Papakāinga development.</li> <li>• Rural tourism activities</li> </ul>	 Medium Term Strategy / Regulation Mana whenua Te Puni Kokiri Regional Council Landowners Tourism businesses
			2.2	Facilitate and support the development of local tourism business opportunities.	 Medium Term Facilitation / Information Strategy / Regulation Mana whenua

The actions identified in the Action Plan are not guaranteed to be developed. Council will consider which actions are developed through long term planning processes and collaboration with implementation partners.