



Pae Tawhiti

RANGITIKEI BEYOND

COMMUNITY SPATIAL PLAN

Proud of our places and spaces

Kaupapa kōrero

What does Pae Tawhiti Rangitīkei Beyond represent?

Pae Tawhiti translates to distant horizons, long term or future.

Rangitīkei comes from the ancestor Haunui ā Nanaia who named the Rangitīkei River as he went in pursuit of his wife Wairaka. The event is recorded in the Oriori mō Wharaurangi (Lullaby for Wharaurangi) composed by Dr Te Rangitakoru of Ngāti Apa:

“Ka tiikeitia te waewae, ko Rangitīkei.”
“He strode across the land, hence Rangitīkei.”

Beyond focuses on the future, looking towards a future time and distant horizon. It signifies the district will move beyond what it is now and, with changes likely that are more than what we think is possible.

*“Ko te pae tawhiti, whaia
kia tata, ko te pae tata,
whakamaua kia tina.”*

*“Seek out the distant
horizons, and holdfast to
those you attain”.*

Dr Whakaari Te Rangitakuku (Rangi)
Mete-Kingi of Ngāti Hauiti

Rārangi Take

Contents

Summary	4
Overview	9
Rārangi Take Introduction	11
Pēwhea te whakamahi How to use this document	13
Te Whakawhanake Spatial Plan Development	14
Ngā Whakahāngai Implementation	
Ngā moemoeā, Ngā Whanonga Pono me ngā Whakaarotau Vision, Values and Priority Areas	
Ngā moemoeā Vision	15
Ngā Whanonga Pono Values	16
Ngā Whakaarotau Priority Areas	17
Mātāpono Hoahoa Design Principles	29
Rural, Towns and Settlements	31
Bulls	34
Huntermville Pāraekaretu	52
Kauangaroa	64
Koitiata	68
Mangaweka	78
Marton Tūtaenui	90
Mataroa	110
Moawhango	116
Ōhingaiti	120
Ōhotu	126
Opaea / Kaiewe	130
Rātā	136
Rātana Pā	140
Rural Rangitikei	146
Scott's Ferry	156
Taihape Ōtaihape	162
Turakina	180
Utiku	192
Whangaehu	200
The Details	207
Ngā Tāpaetanga Hapori Community Input	209
Horopaki a-Rohe District Context	211
Mapi o ngā Ahutanga o te Taiao Natural Features Map	212
Mapi o Horopaki a Rohe Regional Context Map	213
Ngā iwi me ngā hapū o Rangitikei Rangitikei Iwi and Hapu	214
Ngā Kōwhiringa me ngā Ngā Whakatōrea Opportunities and Challenges	216
Rangitikei Rua Mano Rima Tekau Rangitikei in 2050	218
Horopaki Mahere Planning Context	219
Horopaki Kaupapa Here a-Motu National Policy Context	220
Horopaki Kaupapa Here a-Takiwā Regional Policy Context	222
Horopaki Kaupapa Here a-Rohe Local Policy Context	224
Ngā Whakatupu Kāinga Residential Growth	226
Ngā Whakatupu Growth Scenarios	227
Ngā Whakatupu Whakahaere Growth Management Approach	229
Ngā painga ā-mua Future Growth Area Assessments	
Bulls	230
Huntermville	237
Mangaweka	244
Marton	251
Taihape	258
Turakina	265
Kuputaka Glossary	271

Summary

Rangitikei Priority Areas



Thriving Communities

Thriving communities are vibrant, growing, diverse, innovative and have an economy that benefits everyone.

- > A diverse rural economy
- > Vibrant town centres
- > Growing businesses



Healthy Communities

Healthy Communities have natural and physical environments that are sustainable, resilient, and meet community needs.

- > Healthy natural environment
- > Climate resilience
- > Emissions reduction
- > Connection with nature
- > Housing that meets a variety of needs
- > Supporting infrastructure



Connected Communities

Connected communities are linked with each other and the wider world physically, socially and digitally.

- > Urban accessibility
- > Transport networks
- > Digital connection
- > Social Interaction
- > Access to community facilities



Unique Communities

Unique communities are built from their sense of place, culture and heritage and quality physical environments.

- > Sense of place
- > Natural and cultural heritage
- > High quality towns

VALUES



Kotahitanga Unity and strength



Manaakitanga Caring for each other



Kaitiakitanga Guardianship and caring for the environment



Mātauranga Knowledge and understanding



Tika me te Pono Doing the right thing and in good faith



Whakapapa Belonging and connection

PRINCIPLES



History



Accessibility



Partnership



Inclusivity



Connectivity



Diversity



Nature



Sustainability



Resilience



Safety



Revitalisation

Key Spatial Moves

- IH Industrial Hub**
Marton, Taihape, Bulls.
 - MX Mixed Use Town Centre**
Marton, Taihape, Bulls.
 - D Destination**
Taihape, Mangaweka, Hunterville, Bulls.
 - P Papakāinga**
Moawhango, Utiku, Mangaweka, Rātā, Kauangaroa, Rātana, Opaea / Kaiewe.
- Rural Rangitikei
 - Growth Towns
 - Rural Villages
 - Coastal Communities



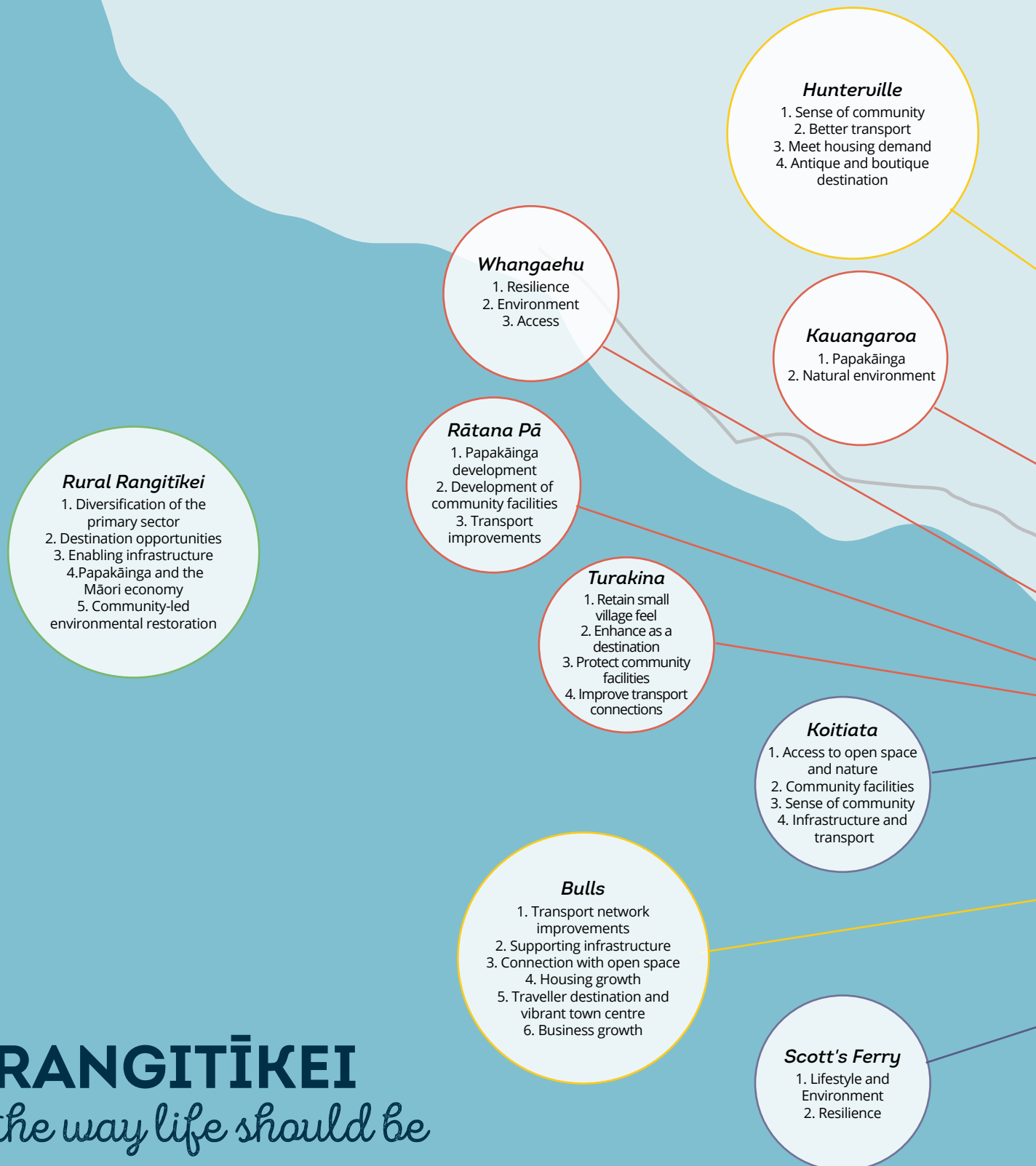
RANGITĪKEI
the way life should be

Key Community Themes

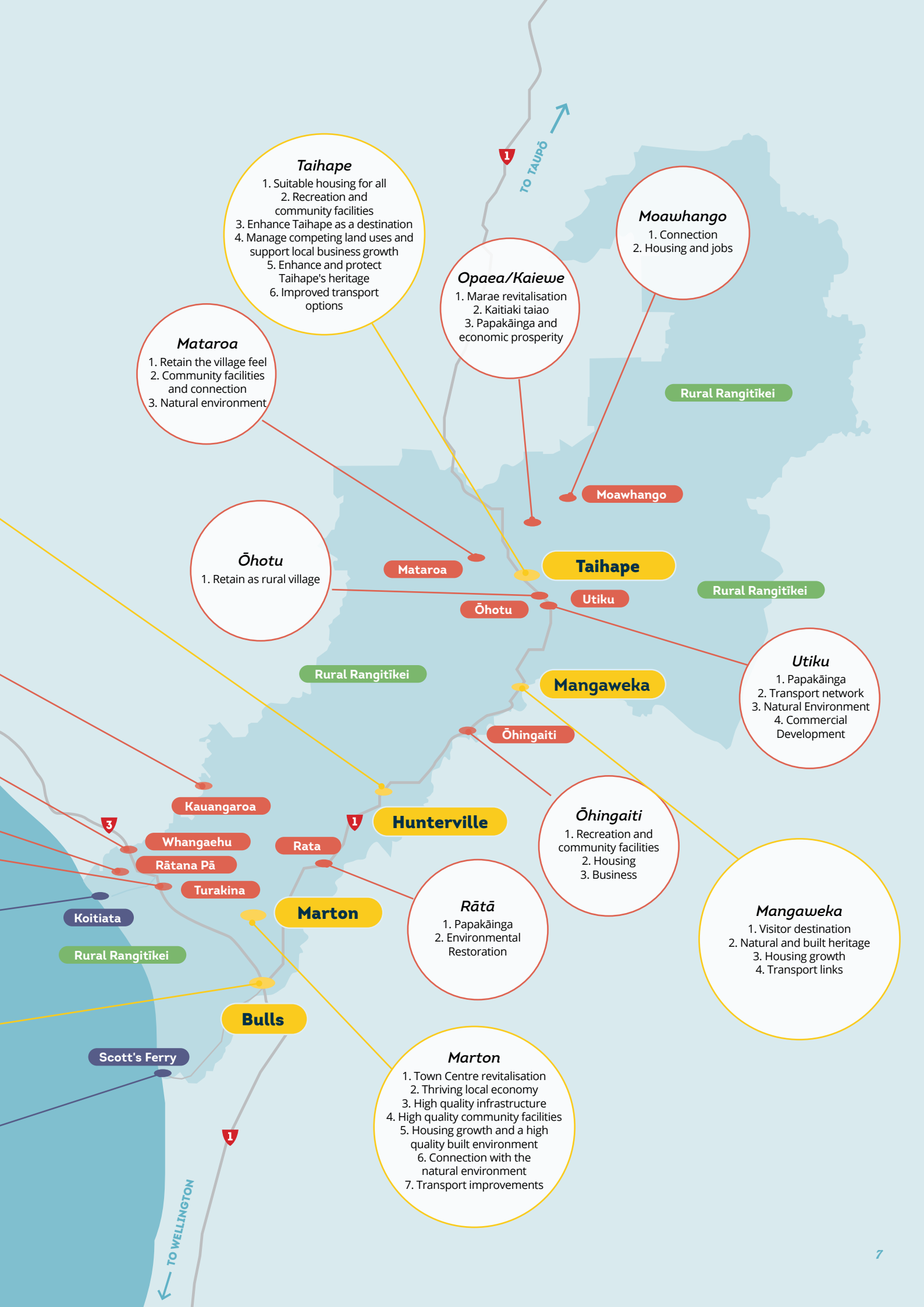
We undertook community engagement on what is important for future growth.

From this engagement, we've identified key themes that are important to our communities.

Each theme is explained in more detail in Section 2 of this plan.



RANGITIKEI
the way life should be



Taihape

1. Suitable housing for all
2. Recreation and community facilities
3. Enhance Taihape as a destination
4. Manage competing land uses and support local business growth
5. Enhance and protect Taihape's heritage
6. Improved transport options

Mataroa

1. Retain the village feel
2. Community facilities and connection
3. Natural environment

Opaea/Kaiewe

1. Marae revitalisation
2. Kaitiaki taiao
3. Papakāinga and economic prosperity

Moawhango

1. Connection
2. Housing and jobs

Ōhotu

1. Retain as rural village

Taihape

Utiku

1. Papakāinga
2. Transport network
3. Natural Environment
4. Commercial Development

Huntermville

Ōhingaiti

1. Recreation and community facilities
2. Housing
3. Business

Rātā

1. Papakāinga
2. Environmental Restoration

Mangaweka

1. Visitor destination
2. Natural and built heritage
3. Housing growth
4. Transport links

Marton

Marton

1. Town Centre revitalisation
2. Thriving local economy
3. High quality infrastructure
4. High quality community facilities
5. Housing growth and a high quality built environment
6. Connection with the natural environment
7. Transport improvements

Bulls

Scott's Ferry

Rural Rangitikei

Rural Rangitikei

Rural Rangitikei

1
TO TAUPŌ

1
TO WELLINGTON



RANGITIKEI

RANGITIKEI AGRIC. RES. REG. DIST.

RANGITOTO

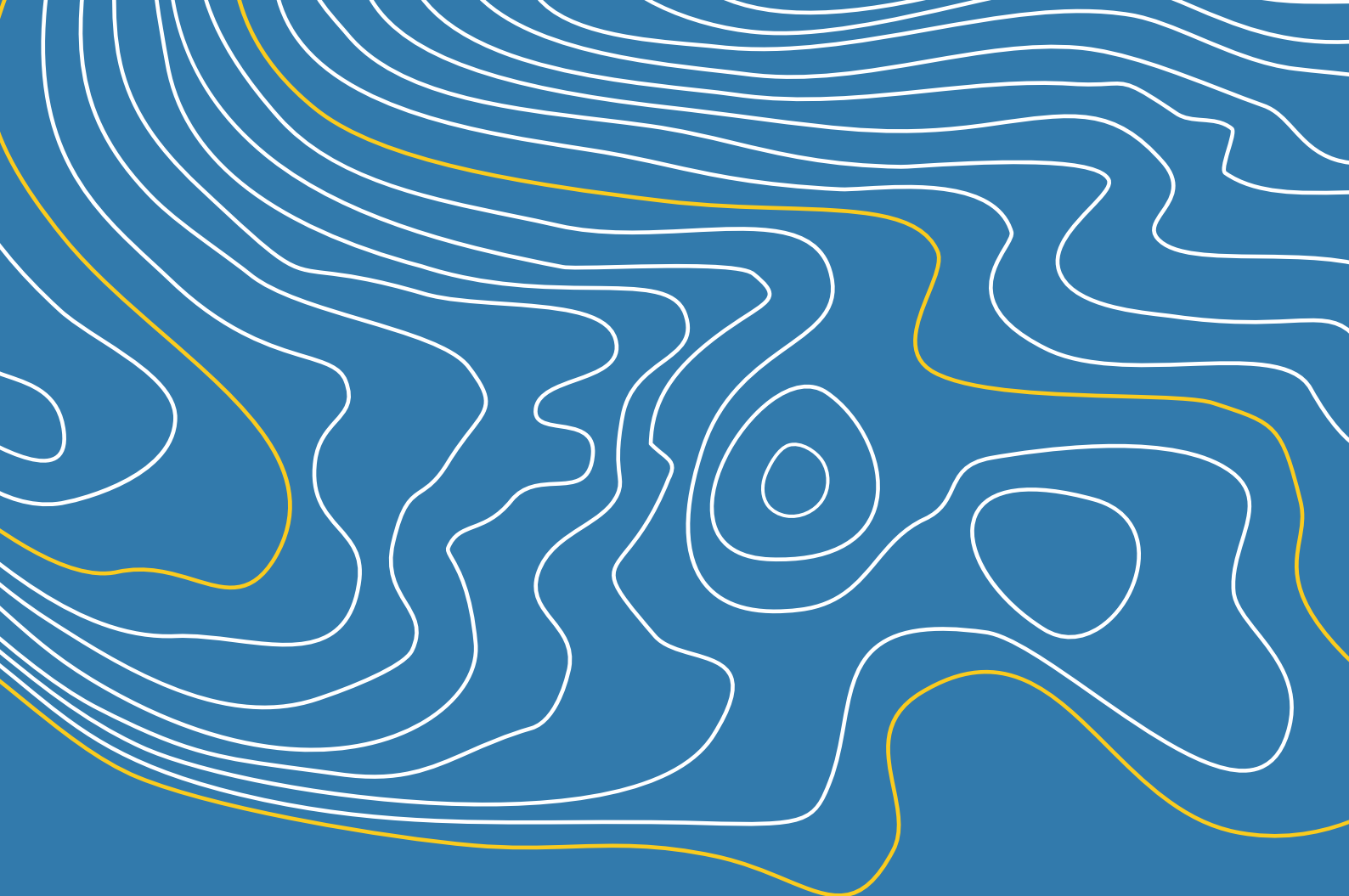
RANGITIKEI BLOCKS REG. DIST.

RANGITIKEI RIVER

TOWNSHIP OF SANDON REG. DIST.

SANDY

1 MILE



Overview





Kupu Whakataki Introduction

The Rangitīkei District is growing, with over 1,300 people moving to the district since 2014. We expect strong growth to continue as more people and businesses discover Rangitīkei as a great place to live and do business. Council is planning to reach a population of over 25,000 people by 2050, which is almost 9,000 more people than live here today.

To ensure there is enough land and infrastructure available and that our urban areas are highly liveable, our rural communities are sustainable and that our natural environment is enhanced, we have created a 30 year spatial plan, Pae Tawhiti Rangitīkei Beyond the Rangitīkei Community Spatial Plan. This document provides the blueprint for the future so that our land use and infrastructure planning is efficient, co-ordinated and community aspirations are achieved.

Pae Tawhiti Rangitīkei Beyond sets out our aspirations for future land use and development. It has been created based on the aspirations of our communities.

The Spatial Plan will ensure that local aspirations of the Rangitīkei community are captured so we are prepared for imminent Central Government reforms of the Resource Management Act, Three Waters and Local Government.

Pae Tawhiti Rangitīkei Beyond has been developed under the guidance of an Advisory Group made up of Elected Members and iwi representatives. This arrangement reflects Council's commitment to working in partnership with iwi.

Pae Tawhiti Rangitīkei Beyond aims to achieve the following objectives:

	Articulate community aspirations for future land use and development.
	Provide a blueprint of future land use and growth throughout the Rangitīkei.
	Collaborate with iwi and hapū to embed cultural values into how we plan for growth and development in the Rangitīkei.
	Guide infrastructure investment decisions and enable targeted future proofing.
	Inform and shape the District Plan Review and Council's other plans and strategies.
	Build confidence and identify potential for industrial, commercial, and residential development.

Pēwhea te whakamahi

How to use this document

There are three sections in this plan. Users of this document may have specific areas of interest and may simply look at one section of the document e.g. a town/settlement.

Overview

Provides the overarching vision, values and priority areas that apply for the whole of the Rangitikei.

Rural, Towns and Settlements

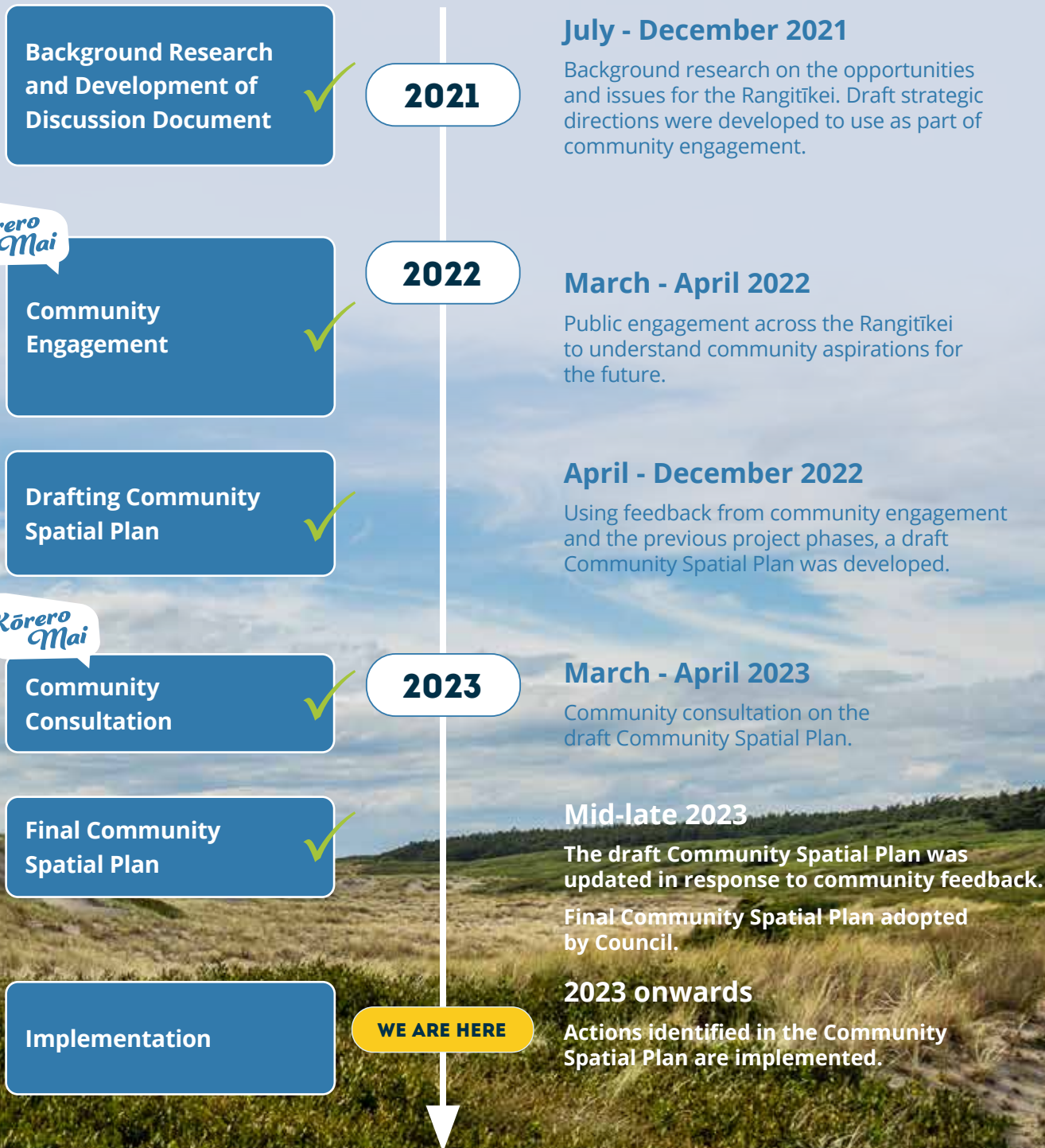
Contains the vision, key themes and action plans for rural Rangitikei and the towns and settlements across the district.

- Bulls
- Hunterville
- Kauangaroa
- Koitiata
- Mangaweka
- Marton
- Mataroa
- Moawhango
- Ōhingaiti
- Ōhotu
- Opaea / Kaiewe
- Rātā
- Rātana Pā
- Rural Rangitikei
- Scott's Ferry
- Taihape
- Turakina
- Utiku
- Whangaehu

The Detail

Provides the detail sitting behind sections 1 and 2 including context, community engagement summary and information on the district's growth strategy.

Te Whakawhanake Community Spatial Plan Development

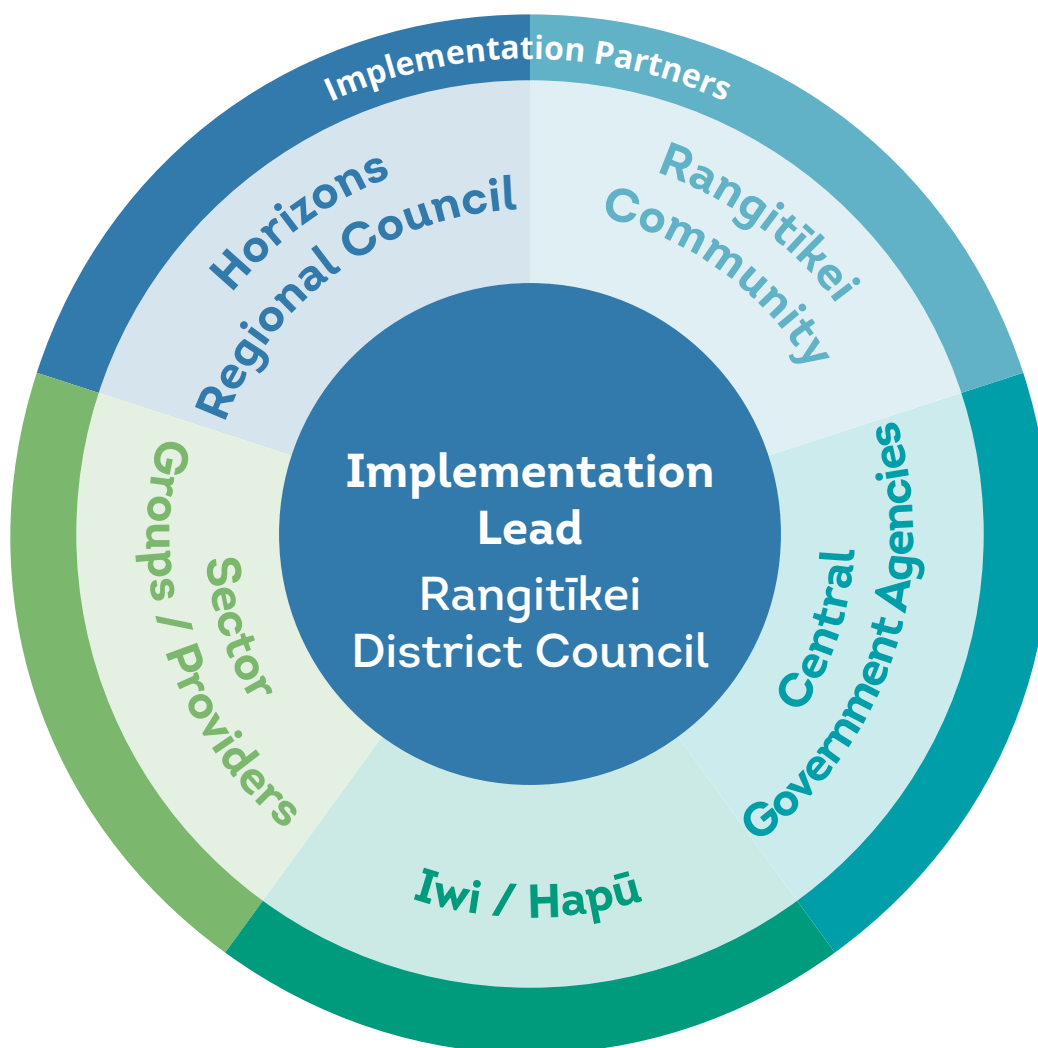


Ngā Whakahāngai Implementation

The aspirations and actions identified in this document represent our goals for the future.

For the implementation of the identified aspirations to be successful collaboration is essential – with our communities, iwi and hapū, Horizons Regional Council, Central Government and its agencies such as Waka Kotahi NZ Transport Agency, the new Three Waters Entity, and infrastructure providers.

An action in 2023 will be the development of an implementation plan to guide how the aspirations and actions identified in this document will be implemented.



Ngā moemoeā, Ngā Whanonga Pono me ngā Whakaarotau Vision, Values and Priority Areas

Our vision, values and priority areas articulate our aspirations for Rangitīkei in the future.

They show what we are aiming to achieve, what is important to us and what will inform our decision-making for the future.

Our vision **Rangitīkei – the way life should be** reflects our aspiration that Rangitīkei is sought after for the lifestyle it provides.

We have a strong sense of place, with unique and varied communities that provide a range of options to everyone.



Ngā Whanonga Pono Values

Our values are our
guiding compass.

They outline how we will act and support our
decision-making so that we can create the future
we want for our communities.

VALUES	
 <p>Kotahitanga <i>Unity and strength</i></p>	We are unified in our identity and work together to achieve the best future possible, making us stronger
 <p>Manaakitanga <i>Caring for each other</i></p>	We care for our people and communities in a way that reflects our strong sense of community, and we encourage and support one another
 <p>Kaitiakitanga <i>Guardianship and caring for the environment</i></p>	We consider the environment holistically, recognising the deep connection between people and the environment and use resources in a way that is sustainable for future generations
 <p>Mātauranga <i>Knowledge and understanding</i></p>	We use knowledge to make decisions and take learnings from the past to make better decisions for the future
 <p>Tika me te Pono <i>Doing the right thing and in good faith</i></p>	We are bold and courageous in decision-making, setting out an aspirational vision for our future generations while respecting tikanga and kawa
 <p>Whakapapa <i>Belonging and connection</i></p>	We acknowledge the generations that have come before us, ensuring a place for those to come after us and create communities where people love to live and feel like home

Ngā Whakaarotau o Rangitīkei Rangitīkei Priority Areas

This section contains the priority areas that apply across the whole of the Rangitīkei.

Each priority area identifies the outcomes sought for sub-areas and how that outcome will be achieved.



*Thriving
Communities*



*Healthy
Communities*



*Connected
Communities*



*Unique
Communities*





Thriving Communities

Thriving communities are vibrant, growing, diverse, innovative and have an economy that benefits everyone.



A DIVERSE RURAL ECONOMY

The Rangitikei rural economy is a diverse powerhouse for the Rangitikei:

- > A leader in sustainable and high value primary production opportunities supported by the rural service sector.
- > Iwi-led businesses that are thriving.
- > A strong boutique tourism economy, leveraging off and improving our natural assets.
- > A forestry sector that is aligned with the 'right tree in the right place' approach.

HOW WE GET THERE

- > Support iwi in gaining access to landlocked land.
- > Recognise the role tourism and rural service activities play in the rural environment.
- > Protect our highly productive land to ensure it is available for primary production activities.
- > Identify suitable locations for forestry activities, and land which should be protected.
- > Work with sectors in the rural environment to support ongoing growth, diversification and resilience.
- > Recognise the importance of multi-generational living and the ability for population growth to contribute to vibrant rural communities.
- > Provide a safe and efficient transport system and freight network that supports rural economic activity.



VIBRANT TOWN CENTRES

Rangitīkei town centres are the heart of our communities - fully occupied, attractive spaces that celebrate the unique character of each settlement. They are green, inclusive, easy to get around, mixed-use areas providing access to services, businesses, community facilities, health services and residential activities.

HOW WE GET THERE

- > Enable a diverse mix of activities to establish in our town centres, while ensuring different uses are located appropriately to achieve a dynamic environment – e.g. retail/hospitality/health services directly fronting the street, residential activities above, commercial activities on the periphery.
- > Lead streetscape design and redevelopment of our town centres.
- > Work collaboratively with building owners to facilitate solutions to strengthen earthquake-prone buildings.
- > Implement changes to ensure our town centres are age friendly and accessible to everyone.
- > Work in partnership with the community on placemaking initiatives that promote the use of the space, increase safety and amenity, community connection and pride.
- > Provide a range of transport choices to increase accessibility of our town centres (walking, cycling, e-scooters).



GROWING BUSINESSES

Businesses establish and grow throughout the Rangitīkei that support the needs of our communities, and leverage off our natural assets, primary products, and location at the heart of the Central North Island.

HOW WE GET THERE

- > Ensure sufficient land is available in the right place to accommodate future business growth and housing to support workers. 'In the right place' means able to access infrastructure, such as the transport network and three waters, not impacted by natural hazards, near to labour markets, etc.
- > Consider the needs of businesses in the rural environment for worker accommodation.
- > Prioritise investment in economic development and district promotion activities that support business growth.
- > Support businesses navigate regulatory processes.
- > Ensure infrastructure (three waters, roads, electricity, internet) is future-proofed to support business growth.





Healthy Communities

Healthy Communities have natural and physical environments that are sustainable, resilient, and meet community needs.



📍 *Hautapu River - Taihape*

HEALTHY NATURAL ENVIRONMENT

Our natural environment – the flora, fauna and entire ecosystems are healthy, which supports the health of our people.

HOW WE GET THERE

- > Support community-led projects focused on environmental enhancement.
- > Ensure urban infrastructure positively impacts the natural environment.
- > Protect our most important ecosystems from inappropriate land use.



2004 Flood - Scotts Ferry

CLIMATE RESILIENCE

Our communities are resilient and have adapted to ongoing climate impacts.

HOW WE GET THERE

- > Communities at risk of significant flooding have implemented climate resilience or adaptation projects / plans – Scott’s Ferry, Kauangaroa, Koitiata, Marton, Hunterville and Bulls.
- > New housing development mitigates risks or avoids areas that are at risk from natural hazards, particularly flooding.
- > Support rural communities to become resilient to extreme and changing weather patterns
- > Understand the extent of infrastructure at risk from the impacts of climate change and natural hazards and increase its resilience.
- > Develop a Climate Impact Strategy and Plan.



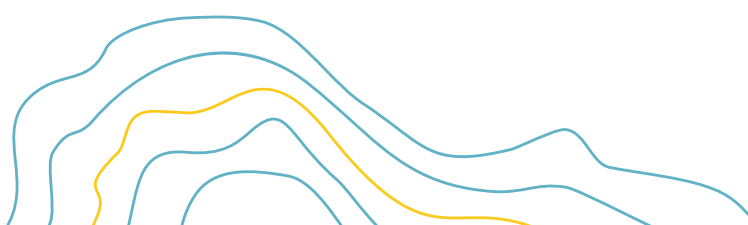
Criterion Street, Bulls

EMISSIONS REDUCTION

The transition towards a low-emissions economy supports the wellbeing of our communities.

HOW WE GET THERE

- > Prioritise nature-based solutions in urban environments.
- > Enable mode shift by increased opportunities for active and micromobility, increased public transport, and infrastructure to support changing fuel types (e.g. EV, hydrogen).
- > Leverage off the existing rail networks for freight.
- > Champion early adoption of new lower-emissions technologies e.g. in farming, and fuel (hydrogen).
- > Develop a Climate Impact Strategy and Plan.
- > Recognise the importance of renewable energy in the regulatory system.
- > Ensure emissions reductions are equitable and inclusive for all.





📍 Marton Park

CONNECTION WITH NATURE

Our communities have easy access to our waterways, parks and open spaces and these spaces are connected through green and blue networks.

HOW WE GET THERE

- > Connect our green spaces and waterways together and with our communities through the development of nature networks that support recreation, increase amenity, provide biodiversity corridors and improve water quality.
- > Support community-led projects focused on developing nature networks, environmental enhancement or enhancement of our parks and open spaces in an equitable manner.
- > Encourage the development of walking and cycle trails throughout the Rangitikei and maximise benefits to the local economy.



📍 Sample residential streetscape

HOUSING THAT MEETS A VARIETY OF NEEDS

Our people have access to high quality housing that meets their needs throughout their lifetime.

HOW WE GET THERE

- > Ensure there is sufficient land available for housing to accommodate projected population growth.
- > Focus residential and rural lifestyle growth in the main centres of Taihape, Marton, Bulls, Hunterville and Mangaweka. Provide small-scale opportunities for growth in other settlements (where appropriate) to give choice.
- > Enable and encourage infill development and medium density housing in our main centres.
- > Recognise and provide for the needs of multigeneration households.
- > Support tangata whenua in realising housing aspirations.
- > Partner with housing providers and central government to support the delivery of social and community housing.
- > Enable a range of residential activities to be undertaken to meet the needs of the community



Indicative Rain Garden

SUPPORTING INFRASTRUCTURE

Our urban communities have access to high quality transport networks, clean drinking water, efficient wastewater networks and stormwater systems that can cope with ongoing climate impacts. Our infrastructure supports community health and wellbeing and enhances the natural environment.

HOW WE GET THERE

- > Long term planning of infrastructure required to support growth and future-proof infrastructure upgrades to ensure they can meet future growth.
- > Require new developments to achieve stormwater neutrality.
- > Enable intensification of our urban environments to ensure the efficient use of existing infrastructure.
- > Incorporate low impact infrastructure design where appropriate, such as rain gardens, into future developments and the redevelopment of existing stormwater infrastructure.
- > Work alongside electricity providers to plan for future electricity requirements associated with housing and business growth and transition the transport sector to electric vehicles.
- > Recognise the dominant role renewable energy will play in supporting our energy future.
- > Implement a transport network that provides for high quality multi-modal transport options.



Tutaenu Reservoir



Power Lines



Connected Communities

Connected communities are linked with each other and the wider world physically, socially and digitally.



Te Matapihi - Bulls Community Centre

URBAN ACCESSIBILITY

Urban residents in Marton, Taihape, Bulls and Hunterville have access to local employment, town centres, parks and open spaces and education within 10-minutes from home.

HOW WE GET THERE

- > Enable and encourage intensification within the existing urban footprints for Taihape, Marton and Bulls.
- > Consider accessibility when identifying future residential growth areas.
- > Undertake structure planning to ensure new developments are physically connected with the existing urban environment.
- > Invest in active mobility networks that support all active and micro-mobility transport methods. Identify active mobility pathways for our urban areas and develop an implementation plan for their construction.



KiwiRail Train SH1



Computer station - Marton Library

TRANSPORT NETWORKS

Our communities have access to and choice of, to a range of affordable transport options that meet their needs and connect to key destinations – including private transport, public transport, micro-mobility and active transport.

HOW WE GET THERE

- > Development of an active mobility pathway plan to guide the location and implementation of active mobility pathway networks through our urban areas and between settlements.
- > Advocacy and collaboration to facilitate the implementation of public transport services, particularly rail services and the introduction of new technology (autonomous vehicles).
- > Integrate land use planning and transport infrastructure planning to ensure accessible urban environments.
- > Leverage from external funding sources to maximise projects and outcomes for the transport network.
- > Invest in, and collaborate on the implementation of projects that increase safety of transport networks.
- > Leverage off the role the Rangitikei plays in inter-regional connectivity for passenger and freight for the Central North Island.
- > Work collaboratively with all transport partners, including Waka Kotahi and regional local authorities to advocate, plan and implement a high-quality, integrated, safe and efficient transport network.

DIGITAL CONNECTION

The entire Rangitikei has access to high quality digital connections available (internet & cell phone) which support working from anywhere, rural businesses and enables our remote communities to connect digitally.

HOW WE GET THERE

- > Advocate to Central Government for improved rural digital connectivity.
- > Inform our communities about emerging digital connectivity opportunities.



◆ Marton Market Day



◆ Te Matapihi - Bulls

SOCIAL INTERACTION

Our communities have strong social connections that are grounded on a strong identity. Our built environment including, parks and reserves, community facilities, active mobility pathways and civic areas, are designed to encourage and provide opportunities for social interaction and connection.

HOW WE GET THERE

- > Promote the unique identity of each community.
- > Support community-led development.
- > Promote and encourage local events.
- > Promote connection between public and private spaces that increase opportunities for social interaction.
- > When building or redeveloping public spaces include design elements that encourage increasing social interaction and community connection e.g. places to sit, events spaces.

ACCESS TO COMMUNITY FACILITIES

Our communities have access to high quality public spaces and community facilities that support social interaction, inclusion, learning and recreation.

HOW WE GET THERE

- > Implement the civic centre projects for Marton and Taihape.
- > Invest in redevelopment of the Marton and Taihape swim centres.
- > Invest in our green spaces.
- > Enable the development of essential social services and infrastructure.



Unique Communities

Unique communities are built from their sense of place, culture and heritage and quality physical environments.



Rangitikei River - Mangaweka

SENSE OF PLACE

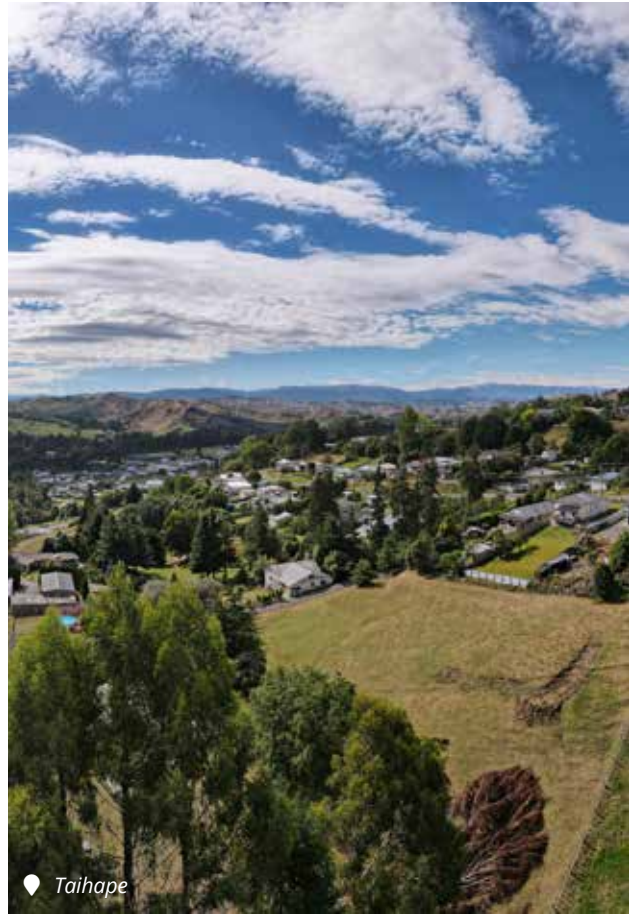
The towns and settlements in the Rangitikei provide an enviable small-town lifestyle. They are connected through a shared identity as being part of the Rangitikei. Our character is derived from both the physical environment and belonging within and connection to the surrounding landscapes. Our waterways connect us together, from our outstanding natural environments in the north, weaving through the Rangitikei to the coast.

HOW WE GET THERE

- > Identify, protect, and celebrate what makes each of our towns and settlements unique.
- > Focus growth in Marton, Taihape, Bulls, Hunterville and Mangaweka.
- > Strengthen our connection with our natural environments, waterways, green spaces, coastal areas, and landscapes through the development of nature networks.



📍 Marton Memorial Walkway entrance



📍 Taihape

NATURAL AND CULTURAL HERITAGE

Our history and culture are understood and celebrated alongside our natural environment as what makes the Rangitīkei unique.

HOW WE GET THERE

- > Identify, protect, celebrate, and enhance our Outstanding Natural Landscapes and Features, sites of cultural significance, and built heritage.
- > Work in partnership with iwi and hapū in the protection of cultural sites of significance and environmental restoration projects.
- > Identify opportunities for storytelling.

HIGH QUALITY TOWNS

The built environment in the Rangitīkei supports well-functioning communities that are inclusive and celebrate culture, enable meaningful choices in housing, transport, are resilient and have good accessibility.

HOW WE GET THERE

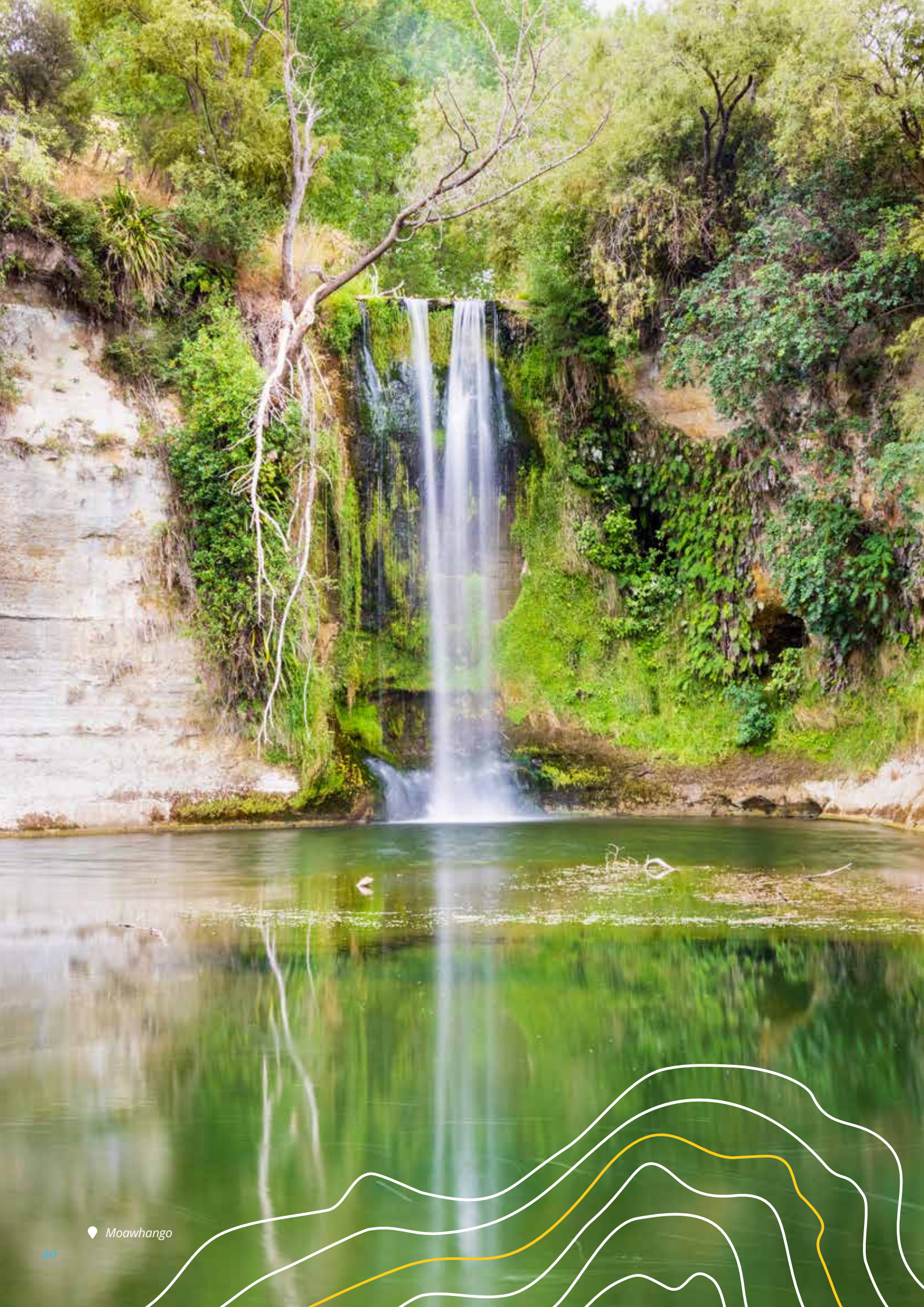
- > Invest in public spaces in a manner that implements high quality urban design and supports connection between public and private spaces, interaction, activation, enjoyment and community pride.
- > Use Crime Prevention Through Environmental Design principles when developing public spaces.
- > Encourage high quality urban design for new development throughout urban environments.
- > Advocate for improved public transport.
- > Enable the development of a range of housing typologies.
- > Develop urban areas to be activity friendly environments – places where making an active choice is easy.

Mātāpono Hoahoa Design Principles

The principles identified below should be used to guide future land use and development.

They have guided the development of the concepts in this plan, and will be considered and used when undertaking the District Plan review.

PRINCIPLES	
 History	Our dual heritage is celebrated. Mana whenua significant sites and cultural landmarks are acknowledged. Historical narratives are captured and expressed creatively and appropriately. Māori names are celebrated, both traditional and new.
 Accessibility	Our residential environments are accessible for everyone of all ages and abilities within 10 minutes from home - to our business environments, parks and open spaces, schools, health services and community.
 Partnership	The mana of iwi and hapū as Mana whenua is recognised and respected. Opportunities are promoted giving effect to Mana whenua kaitiaki roles. Mana whenua are fully empowered through engagement and design processes to ensure tikanga Māori is applied across the project life.
 Inclusivity	Our communities are designed to be inclusive of all of our people and enable everyone to participate and meet their needs.
 Connectivity	Our communities have a strong spiritual connection to the Rangitīkei. They are also physically connected. Our towns and residential environments are connected in a manner that will allow people to move around however they want. This includes by car, walking, cycling, mobility scooters, e-scooters and more.
 Diversity	Our communities contain a diversity of people that have varying work, play and educational needs that are provided for.
 Nature	Our towns are connected and integrated with the natural environment. This includes green networks through town, accessibility to parks and open spaces, space for people to have a garden at home, lots of trees. It also includes connection and the health of our blue networks, waterways.
 Sustainability	Green infrastructure and technology is embraced for new developments and to increase resilience or amenity. Increased density in appropriate locations will maximise the use of existing infrastructure. The natural environment is protected, restored and/or enhanced.
 Resilience	Resilience to climate impacts and natural hazards. Some towns are already susceptible to the impacts of climate change and flooding. Ensure that future growth areas transition away from high-risk areas and residential intensification in areas subject to flooding will be minimised or avoided.
 Safety	Our urban areas are designed in accordance with Crime Prevention Through Environmental Design principles.
 Revitalisation	The redevelopment of towns improves the quality of the built environment whilst recognising and embracing local heritage



📍 Moawhango