

WHANGAEHU

The small settlement of Whangaehu sits along State Highway 3 on the western side of the Whangaehu River within close commuting distance to Whanganui.

The Whangaehu village is the western gateway to the Rangitikei District.

Whangaehu Marae is located just a short drive from the village and is associated with Rangiwahakaturia-Taitapu.

The settlement has a church, hall and local primary school.



WHANGAEHU

Key community priorities

- Flood resilience.
- Protecting the natural environment.





VISION FOR *Whangaehu*

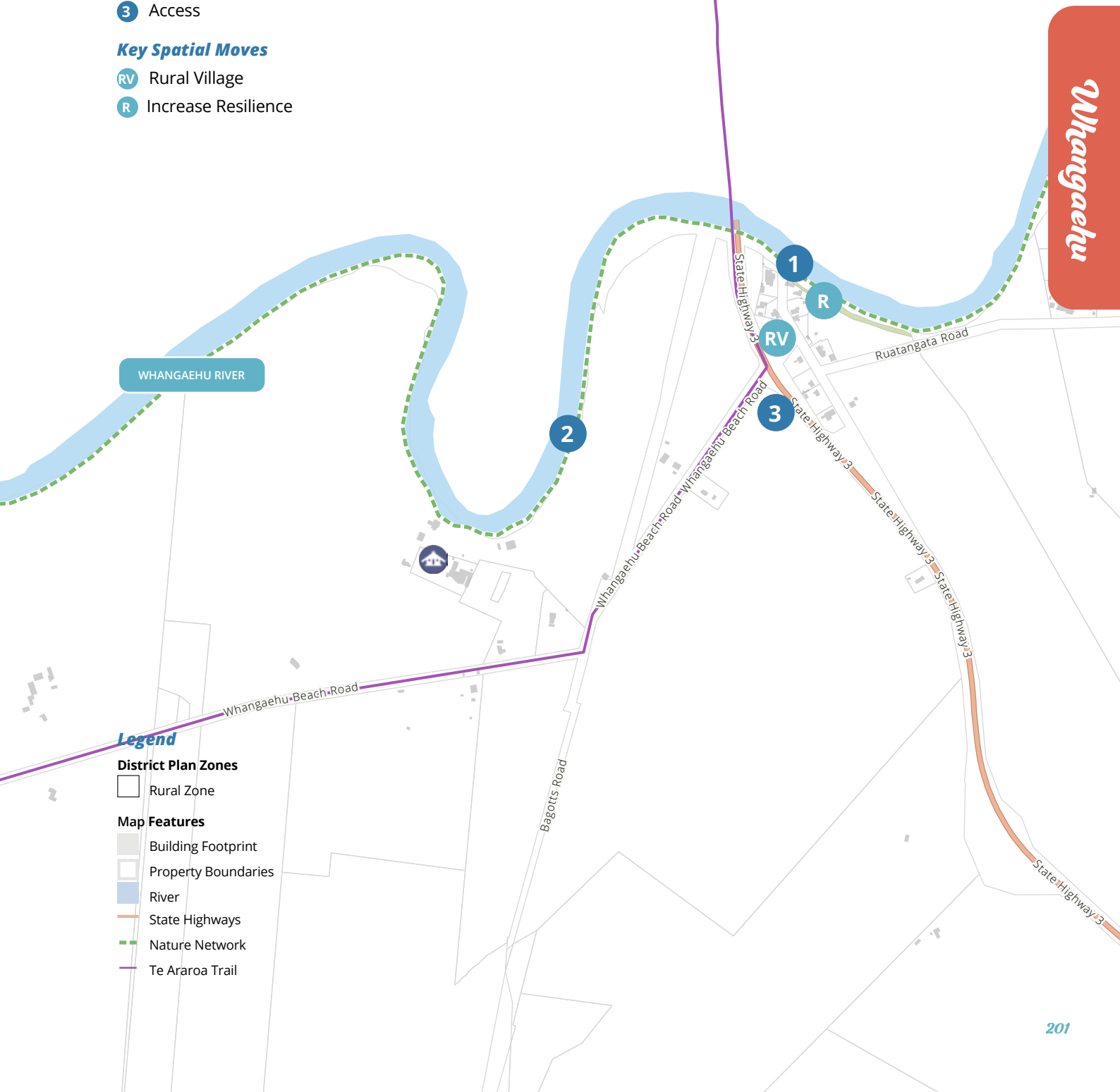
Whangaehu is a thriving rural community, strongly connected with the Whangaehu River, high flood resilience, biodiversity and water quality.

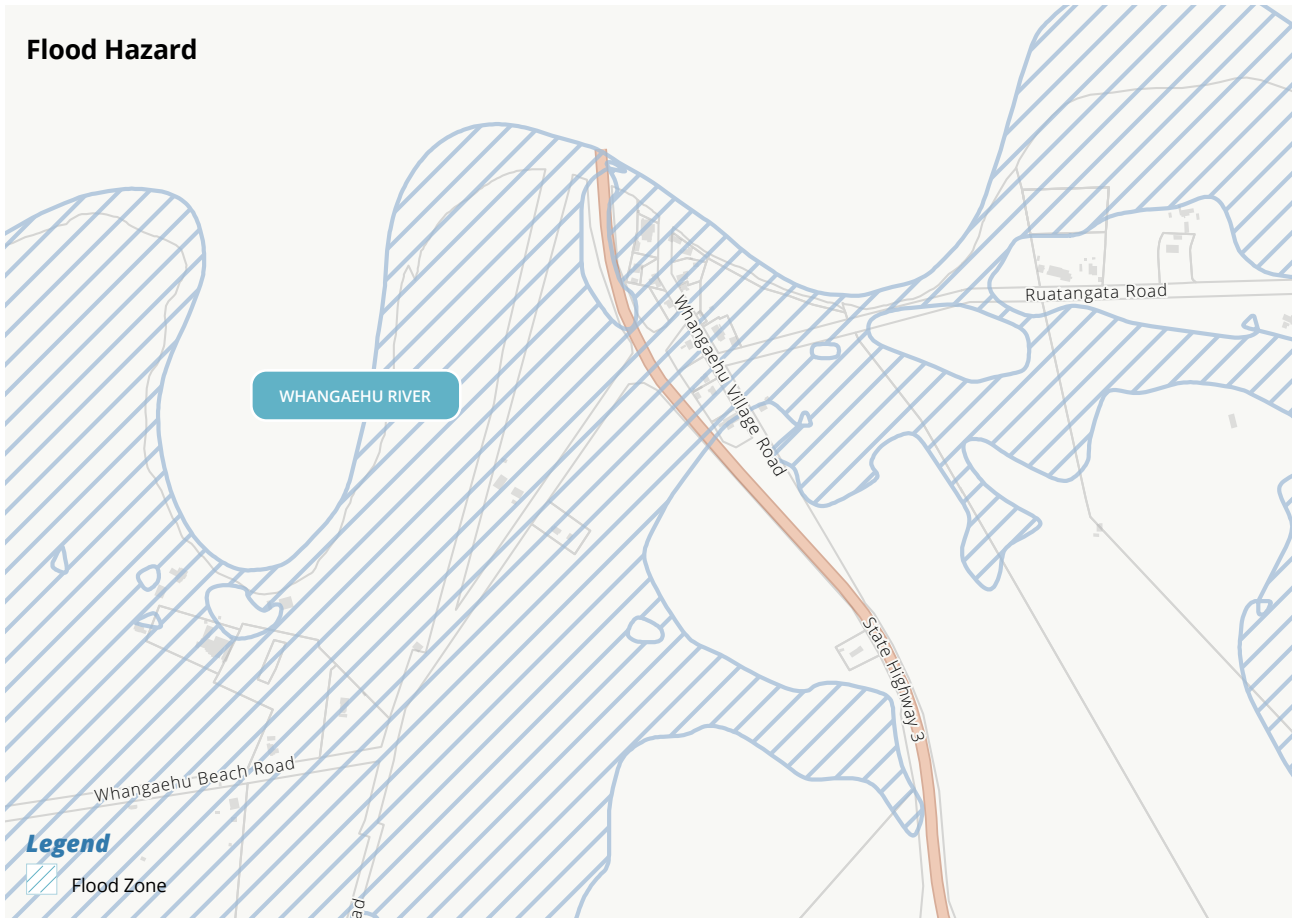
Key Themes

- 1 Resilience
- 2 Environment
- 3 Access

Key Spatial Moves

- RV Rural Village
- R Increase Resilience





1 Resilience

Whangaehu village is at risk from flooding from the Whangaehu River.

Parts of the settlement have been impacted by significant floods in the past and the risk of future flooding is likely to get worse over time. The village is also at risk from lahar travelling down the Whangaehu River from the Ruapehu volcano.

The village has no reticulated services and is located on a strip of Class 2 land that runs alongside the river.

Given the significant flood hazard impacting the settlement, no future housing development will be allowed in the village. A few more houses may be developed in the surrounding rural environment.



“High flood resilience”

Community Voice

Priorities

- > Increase resilience and reduce risk to residents associated with flooding from the Whangaehu River.





Whangaehu River



Whangaehu

2 Environment

The community is strongly connected to the Whangaehu River and want water quality and biodiversity improved.

Priorities

- > Water quality and biodiversity improvement.

“Dramatically increased biodiversity and water quality”

Community Voice

Whangaehu



Whangaehu



Whangaehu

3 Access

Whangaehu is the western gateway to the Rangitikei.

There is no public transport available, and access to the village from State Highway 3 can be challenging.






Priorities

- > Enhance Whangaehu as the western gateway into the Rangitikei.
- > Increase traffic safety.
- > Advocate for improved public transport options, including rail.

Action Plan

Rangitikei Priority Area	Key Themes	Project		
Healthy Communities	RESILIENCE	1	1.1	Work alongside the community and Horizons Regional Council to undertake a risk assessment and investigate and implement options for reducing the risk associated with flooding from the Whangaehu River.
Healthy Communities	ENVIRONMENT	2	2.1	Recognise the work being completed by the Rangitikei Whangaehu sub-group that support environmental improvements.
Connected Communities Unique Communities	ACCESS	3	3.1	Enhance the entrance to Whangaehu to increase the sense of arrival in the Rangitikei.
			3.2	Advocate for Waka Kotahi to investigate options for increasing traffic safety improvements through the village.
			3.3	Advocate for improved public transport options.

The actions identified in the Action Plan are not guaranteed to be developed. Council will consider which actions are developed through long term planning processes and collaboration with implementation partners.

Timeframe	Council's role(s)	Project Partners and Key Stakeholders
 Medium Term	Strategy / Regulator Partner	Regional Council Community Waka Kotahi
 Ongoing	Facilitation / Information	Catchment Group Regional Council Community
 Medium Term	Partner Service Provider	Waka Kotahi Community
 Ongoing	Advocate	Community Mana whenua Waka Kotahi
 Medium Term	Advocate	Community Regional Council Kiwi Rail