



RANGITĪKEI
DISTRICT COUNCIL
Making this place home.

Pae Tawhiti
RANGITĪKEI BEYOND

*Kōrero
Mai*

PLANNING OUR PLACES AND SPACES

TURAKINA WHANGAEHU KAUANGAROA SUMMARY



TURAKINA

The Turakina village celebrates its dual Māori and Celtic heritage, which could be developed further as a drawcard for the village.

Residential Zone

We want to know if you think Turakina should grow with either residential or lifestyle housing, and if so where.

The village is a short commute from both Marton and Whanganui.

However, it lacks both wastewater and drinking water networks and some areas are at risk of flooding.

Residential scale development wouldn't be possible without reticulated wastewater and drinking water systems being implemented, but lifestyle blocks could be developed.



Commercial Zone

Currently, the village is disconnected, and State Highway 3 means it is busy. Travellers pass through at 70km per hour, making it hard for people to cross the road and stop when there are vehicles behind them.

We don't expect Turakina will need additional land for commercial activities and think that new industry will most likely establish in nearby towns.

We want to know your ideas for how to better connect the retail activities through the village, the school, reserve, cemetery and Cameron Park.



WHANGAEHU

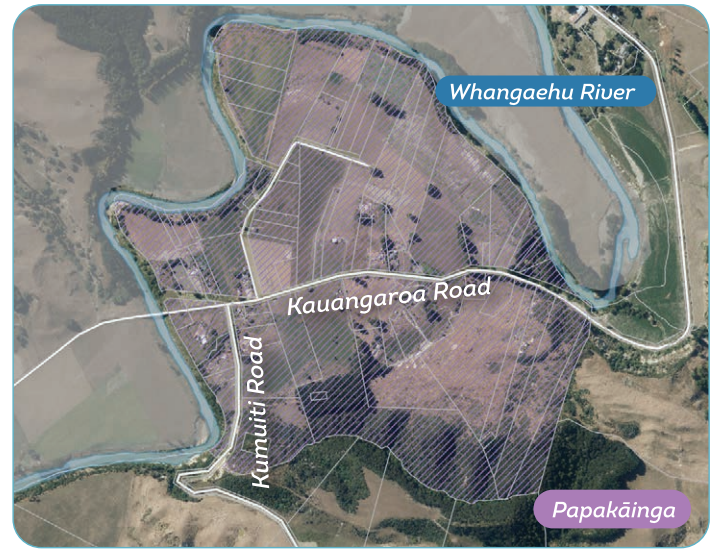
KAUANGAROA



The small settlement of Whangaeahu sits along State Highway 3 on the western side of the Whangaeahu River within close commuting distance to Whanganui.

Whangaeahu Marae located just a short drive from the village. The settlement has a church, hall and local primary school.

The settlement has been impacted by a number of floods in the past. As our climate is changing, we can anticipate larger flooding events more often.



Kauangaroa is a small settlement on the eastern side of the Whangaeahu River, with Kauangaroa Marae at its heart.

The settlement has been impacted by a number of floods in the past and is at risk of future flooding.

There is an area identified in the district plan for future papakainga development (purple hatching).



FEEDBACK FORM

Attach additional pages if required.

My settlement is...

☐ Turakina ☐ Whangaehu ☐ Kauangaroa

My connection to this place is...

☐ I live there ☐ I visit often ☐ I used to live there

☐ Other _____

What might your settlement look like in 2050?

What are your aspirations for future housing development (residential/lifestyle blocks) in and around your settlement? Where should new houses be located?

What business (industrial/commercial/retail) opportunities do you think should be enabled? Where would they be located?

What are the opportunities and challenges for your community?

How could the transport network be improved?

What are the significant nature networks in your community? How can we celebrate them and create greater connections with these areas?

What should be protected for future generations?

What community facilities are important for you?

What are the climate change issues related to your community? What do you think Council's response should be?

[illegible]

-

Rangitikei District Council
Pae Tawhiti Rangitikei Beyond
Private Bag 1102
Marton 4741



KAUANGAROA
WHANGAEHU
TURAKINA

Kōrero Mai

Have your say

Now is your chance to shape the future of your settlement!

Fill out the survey, tear it off and post-it back, or fill it out online.

Have your say by 19 April 2022.

More information

We've got lots of information to share – and you might be interested in more background information or other settlements. We have a more detailed discussion document available for you to read, and share your views.

If you want to have a chat in person, or online – go online to find out where our workshop sessions will be held. Please note that public sessions are subject to Covid-19 Traffic Light setting regulations.

You can find the discussion document and other supporting information:



On our website www.rangitikei.govt.nz/paetawhiti



In any of our libraries or service centres in Taihape, Marton and Bulls.

Want to know more?

Contact the Project Lead: Katrina Gray
on 0800 422 522 or katrina.gray@rangitikei.govt.nz

Purpose of Pae Tawhiti Rangitikei Beyond

Pae Tawhiti Rangitikei Beyond is a district-wide spatial strategy and plan. We aim to capture our community's aspirations for the future.

The plan will provide a blueprint of how we want our communities to develop.

It will provide high level outcomes and actions that will guide Council projects that plan for and respond to growth and development - including our infrastructure planning and District Plan Changes (the rules that guide development).

Purpose of this Summary Document

We have designed this summary document to provide an overview of the key considerations for your community. We want to create a conversation with the community about the future.