

Council Meeting

Tabled Documents

25 July 2019

Item 2	Public Forum: Tutaenui Stream Restoration Society
Item 8	Portfolio Updates: Heritage and Tourism
Item 13	District Plan Change Update
Late Item	The Taihape Art Society - letter

From: Maree Gurney on behalf of Greg Carlyon
Sent: Monday, 8 July 2019 3:42 PM
To: Ross McNeil (ross.mcneil@rangitikei.govt.nz)
Cc: andy.watson@rangitikei.govt.nz; nigel.belsham@rangitikei.govt.nz; hamish.waugh@mdc.govt.nz; 'Michael Hodder'
Subject: Marton B and C Dam
Attachments: Photos of dam works - 4 July 2019.pdf

Tabled at

on 25 July 19

Kia ora Ross

I'm dropping you this note as a heads-up in relation to recent earthworks undertaken by the district council as part of a programme to stabilise the spill way at the lower dam.

As you are aware, the Tutaenui Stream Restoration Society has committed substantial community resource and time to the dams project and stream restoration more broadly. During recent planting and pest control work over at the site, the earthworks being undertaken by your team have generated a case of Déjà vu following the very poor efforts at managing logging for the reservoir surrounds.

Once again, it is the middle of winter and council has:

1. Completely stripped vegetation which would otherwise stop sediment entering the lower dam and Tutaenui Stream,
2. Diverted stormwater into the lower dam and Tutaenui Stream,
3. Pushed debris and waste into the lower dam and Tutaenui Stream,
4. De-stabilised and initiated erosion on the spillway margin,
5. Caused significant damage to the stream channel with multiple vehicle crossings,
6. Undertaken tracking with no erosion and sediment control,
7. Completely de-stablished the existing track, making it unusable for trapping and planting activities.

We have asked on a number of occasions over the years for a closer relationship with council staff when works of this type are being undertaken. This is useful for a number of reasons, including support to council for funding applications (e.g. recent planting), operational work being undertaken by the community at the reservoirs, and feedback to the community about the myths and realities of work being undertaken at the site. While the engagement, support and work of the Parks team, lead by Athol and Ben, are exemplary, the same cannot be said for the engineering team, for whom communication is non-existent.

I have spoken with Arno Benadie on two occasions (which I have initiated). He has no awareness of the community group assisting council, or the role that we have had at that site over many years, and we have agreed to keep in touch in order to try and resolve the issues above. I would welcome that and am awaiting his feedback following a site visit by him on Friday, 5 July (following my first call), and his further follow up with the Operations team.

However, it is my view that the work that has been undertaken is sub-standard and poorly timed by anyone's account. A number of the activities, including work in the bed of the stream and the multiple discharges breach regional rules and require resource consents. Further, I understand the council is planning further work in terms of stabilising the spillway, which could generate contaminant discharges with serious consequences for the stream ecosystem. The absolute tragedy is that the stream only started flowing four weeks ago, and council has had seven months in which it could have done this job in fine weather, in a dry landscape with no flow in the stream, because council takes the entire flow for community water supplies.

It is our opinion that council needs to take urgent action to introduce erosion and sediment control measures, manage its activities on the margins of the dam and Tutaenui Stream and obtain any consents not held but required for work anticipated. It would also be useful if the engineering team communicated the work programme and outcomes, as you will more than likely get general support, as council has had for any number of projects.

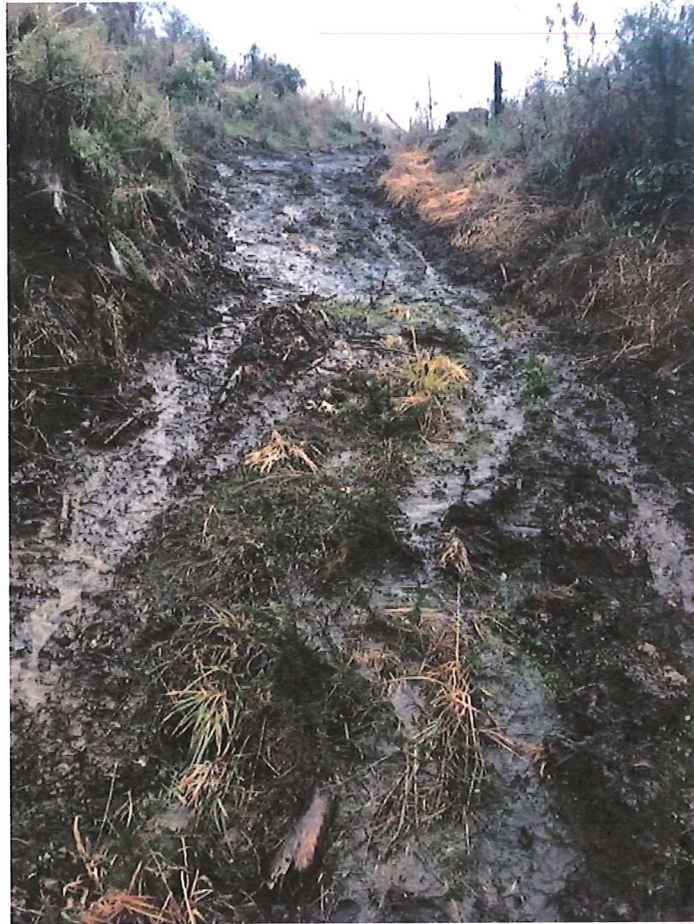
I have attached photos of the site (taken on Thursday, 4 July) which show the impact of the recent works. It is very disappointing to see this level of effort and heart-breaking to see this work undermine restoration efforts made by both council and community.

We are acutely aware that this is a public water supply. This is the second major event within 18 months which puts this site at risk and threatens the quality of the community water supply, and which impacts significantly on the Tutaenui Stream. It is ironic that the engineering team publicly expressed concern about public impacts on water quality and did not support public access to the site because of potential contamination concerns. It really would be an impressive effort by any member of the community that could generate this level of impact.

Finally, I am aware that council had been alerted to this work and its impacts at least a week before I brought them to your engineering manager's attention. I am not aware of any follow up and there has been no work at site of any type to mitigate the impacts. I have passed this material on to Horizons Regional Council, via their Pollution Hotline, and will seek a formal response and action from them.

As always, our community welcomes engagement with the council to sort these matters out. I look forward to council's feedback and physical intervention to stop the current negative impacts.

Nga mihi
Greg Carlyon
Convenor
Tutaenui Stream Restoration Society



Destruction of existing track network and uncontrolled sediment flows



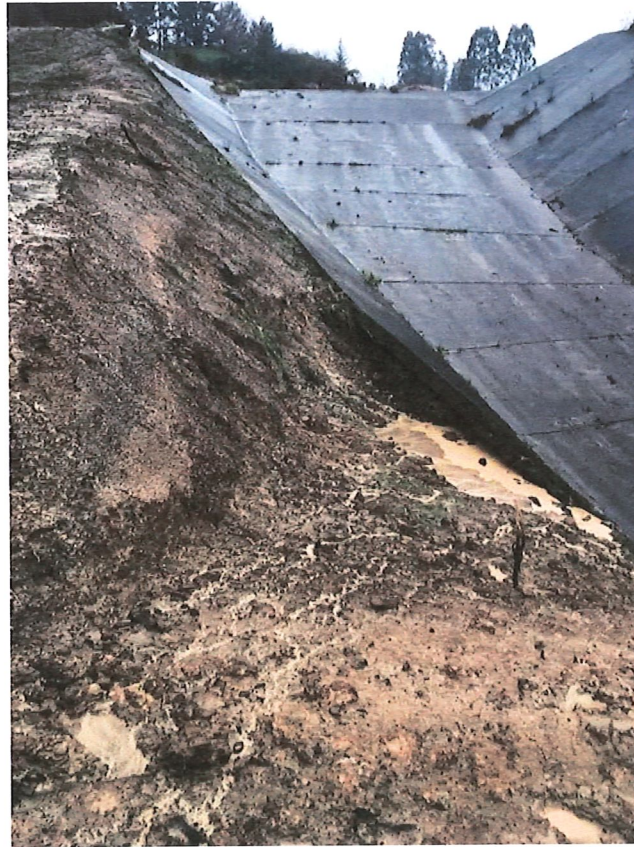
Dumping of waste material into dam spillway



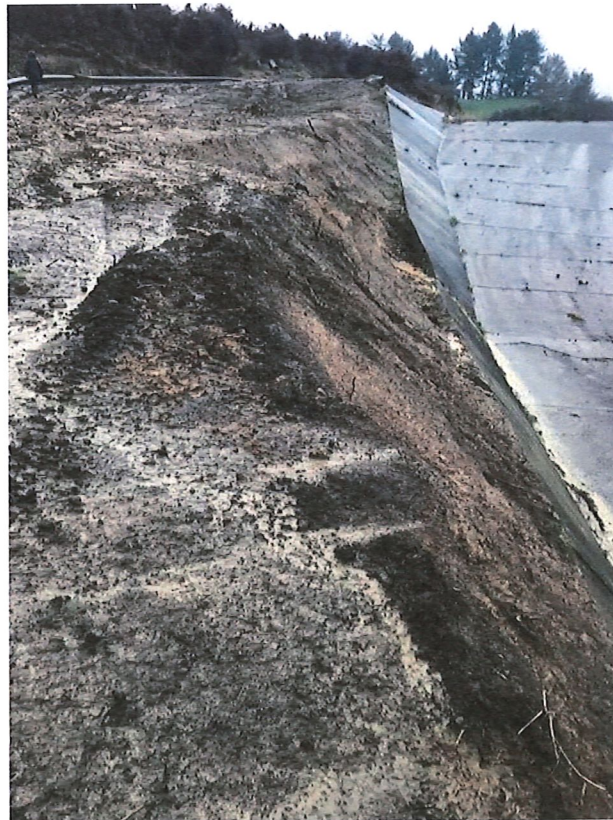
Debris dumped into and adjacent to public water supply



Unconsolidated and uncontrolled sediment flows adjacent to dam spillway and Tutaenui Stream



Accelerated erosion and slumping following uncontrolled earthworks



Sediment losses adjacent to lower dam spillway



Deliberate diversion of uncontrolled overland flow through construction site to the Tutaenui Stream



Clean water discharge from recently restored wetland site adjacent to construction works, demonstrating normal sediment load (taken at the same time as all other photos). 4 July 2019



Bed of the Tutaenui Stream following uncontrolled machinery access



Discharge of sediment-laden stormwater into the bed of the Tutaenui Stream



Uncontrolled access across the Tutaenui Stream. Water clarity driven by upstream discharges of sediment.



Debris discharge directly into public water supply

Portfolio Update Heritage and Tourism - Cr Richard Aslett – July 2019

1) Update on the Rangitikei Heritage Group Recent Activity –

Next meeting of RH Group planned for Weds 14th Aug, 3.30pm Hunters Café, Hunterville. Items to be discussed to included **Heritage Inventories, the original Magaweka Bridge, various local matters, the Heritage Trail and Signage revamp** and completing the draw for the sporting theme printed A2 canvas prize. Alison Dorian (chairlady of Mangaweka Heritage) has requested support from the group and locals at the **upcoming public (consultation) meeting on the original Mangaweka Bridge**, to be held at **Awastone on Monday 5th August** from 5:30pm to around 7pm.

2) Update on Tourism :

As a result of the **email questionnaire “Enhancing the digital profile for businesses in the Rangitikei” sent out by Gioia Damosso** (RDC Tourism/Economic Dev, a **“Brainstorm” meeting** was held this month with Gioia and local businesses and tourism operators, with the idea to develop putting together a focus group that can meet to promote the Rangitikei District. *Will chase up an update and report back on developments at the next Council meeting.*

Rangitikei.com Website :

Website Stats : Quick view; the number of **hits for June (last month’s total) was 97,894** slightly down on **May’s 109,347, yet well UP on last June’s (2018) figure of 68,886, so still plenty of online interest in the district** and yet again seeing good autumn/winter averages at around the 90K-100K+ monthly hits rate.

All that said, as always ‘Hits’ are only part of the story as to site visits and on-line activity etc, so happy to forward the full stats and comparison charts etc via e-mail to anyone who interested. Just ask at the e-mail below.

Thanks, Cr Richard Aslett - e-mail : mangawekagallery@xtra.co.nz



Memorandum

To: Council

From: Michael Hodder

Date: 24 July 2019

Subject: District Plan Change Update, July 2019

File: 1-DP-2-9

TABLED DOCUMENT

Tabled at Council
on 25 July 2019
Item 13

At its meeting on 27 June 2019, Council resolved¹ to approve the Draft Plan Change report for rezoning (rural to industrial) at 1165 State Highway 1, Marton and its release for public feedback during the period 1-21 July 2019, with that feedback considered at the Policy/Planning Committee's meeting on 8 August and incorporated into the final Plan Change documentation for consideration at Council's meeting on 29 August 2019.

Three pieces of feedback were received during the period 1-21 July 2019 and are attached as Appendix 1. They have been passed to The Property Group who is managing the process and ensuring Council meets the statutory requirements.

- Sarah Hunt suggested this would be an opportunity to relocate the Higgins operations near Russell Street;
- David & Joy Bowra-Dean considered that the proposed change compromised the nature of Marton, potentially reducing its attractiveness, and questioned the evidence for the change and the disruption to traffic routes;
- Powerco noted the need for Council or the developers to keep in contact to ensure early clarity over any power upgrades needed in the area.

The Property Group is currently working to an accelerated timeframe, with the objective of having the required evaluation report (in accordance with section 32 of the Resource Management Act 1991) compiled and reviewed by Council's legal advisers by 8 August 2019. Assuming that work is completed by then, the Policy/Planning Committee could (if so delegated by Council) approve public notification of the proposed plan change. The closing date for submissions must be at least twenty working days from the date of public notification.

Recommendations

1. That the memorandum 'District Plan Change update, July 2019' be received together with the three pieces of feedback received during 1-21 July 2019.
2. That the Policy/Planning Committee be delegated, at its meeting on 8 August 2019, to approve the public notification of the District Plan Change for rezoning (rural to industrial)

¹ 19/RDC/181

at 1165 State Highway 1, Marton, as specified by section 73 of the Resource Management Act 1991.

Michael Hodder
Community and Regulatory Services Group Manager

Appendix 1

From: sphunt16@xtra.co.nz

To: ross.mcneil@rangitikei.govt.nz

Date: 01 July 2019 at 12:24

Subject: Proposed District Plan Change – rural to industrial – invitation for feedback

Hi Ross and the Council ,

I'm a resident that has lived for the past 12 plus years in Lyon St.

It was once a relatively quiet place, we had the occasional concrete truck noise, but nothing too disruptive, that was until Higgins moved in a few years back into the site on Russel Street by Farmlands . They have also just taken over the concrete business , so now the noise levels have escalated and its only getting worse not better

The terrible daily noise of beeping reversing trucks, crashing machinery , tractors, diggers , constant delivery of gravel etc, and now the huge increase in concrete manufacturing has ruined our once quiet and peaceful neighborhood.

I work regular nights at the hospital , so find that I can't sleep in my own bed because of the noise disruption. At times its so loud you can hear it above the TV. I have tried earplugs but this resulted in an ear infection . But to be honest I shouldn't have too !

This loud and intruding industrial noise echos around the streets and also upsets those that also live in Beaven, Harris, Wilson plc ,Pukepapa Road and Russel street

Many residents ,who don't wish to be named, have complained to me and in turn I have complained to both Higgins and the council about the noise and it's serious effects it has on us and our health.

Yet it carry's on day after day after day and is getting worse NOT better !

Our quality of life has become poor , we pay our rates and deserve our homes to be a place where we can relax and not be subjected to a builders site in our lounge or bedrooms every day .

Relaxing outside with a good book has become a thing of the past, not just because of the noise but also the dust that blows across from both sites, which I'm sure is an environmental hazard to all us residents ?

Even though its now winter, the hours have increased, it's not uncommon to be woken at 5 am with the trucks arriving or starting up, collecting their loads. The concrete site also starts early too. I've be woken by 6 am concrete trucks and the beeping and pouring of gravel etc that goes with it. Just this morning a truck was in the yard at 4:45am with his loud engine running, which woke us all up and most night trucks are still coming and going into the evening under floodlight !

It's also not uncommon for both sites to be there at weekends . I've been woken to early morning Saturday concrete trucks or some activity in the yards on both sites .

Even on a Sunday someone's over there crashing about !! So we can't escape the noise EVER !!!

So yes ! PLEASE move them away,

PLEASE do it NOW !

PLEASE put them well away from residents so that they can crash and bang too their hearts delight and give us residential residents of Marton finally some well deserved peace a quiet.

Marton is surrounded by land well away from residents . So Yes , I certainly , along with my fellow neighbors support the use of that land instead please !

Yesterday wouldn't be quick enough for us to see Higgins gone from both sites completely!

So please make it happen **before Summer** , which will only bring even longer working days, so even more disruption and misery for us if they stay where they currently are !

In its place maybe a nice park with trees and a huge rate rebate for all this suffering Higgins has caused us , after-all I think we deserve it , don't you !

Regards

Sarah Hunt , long suffering resident !

Sent from my Samsung Galaxy smartphone.

\

David & Joy Bowra-Dean
19 Goldings Line
RD1
Marton 4787

RECEIVED

17 JUL 2019

Policy & Planning Committee
Rangitikei District Council
Marton

To:
File:
Doc:

Dear Committee

We would like to make a few points concerning the news item in the District Monitor of the 4th July headed "Major Industrial Rezone Plan in Marton".

But first a few comments on that news item itself.

The map shown was very small and not very clear. The statement that the location was at the confluence of SH1 and SH2 is wrong. SH2 is the road between Wellington and Napier. We think they are referring to SH3 between Wellington and Hamilton via New Plymouth. Also the confluence of these roads is in Bulls. At least the heading caught our eye, the information about feedback was clear and when we asked for information the ladies in the front office were very helpful, as always.

Now concerning the TPG Planning report of June 2019.

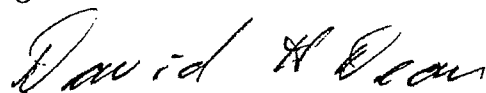
1. We think it would be better to describe the land under consideration as at the junction of SH1, the main trunk and New Plymouth railway lines, Makirikiri Rd. and Wings Line. Referring to page 13 - The report states that Makirikiri Rd. has been "upgraded as a connector between SH1 and SH3". It doesn't even have a sign on SH1 or SH3 to advise of that use. We use Makirikiri Rd. often when we are going to Whanganui and have seen little or no evidence of improvements to this road over the years. The junctions with Pukepapa Rd. and Wellington Rd. would need to be considered for safety improvements if an increased number of heavy trucks used Makirikiri Rd. Also, what are the improvements done on Wings Line? Again nothing is evident to us.
2. Timber processing is mentioned 3 times in the report (p.8, 29 and 35). The timber processing Mill at Kinleith is mentioned twice in the report (p.6 and 35). Kinleith and the other timber processing plant at Kawerau are located in areas remote from centres of population. Even so, we understand there are problems with odours coming from these sites. Yet only once is reference made specifically to smell (p.18) in the report.
3. Bio-forestry is mentioned 6 times (p.6 (twice), 8, 19 (twice) and 29). From what we have found, biochemical processing from woody biomass is in its early stages and may be a risky option for large scale development. The Scion conclusion, in 2014, was that "The global economic and energy outlook at the time made the commercial viability of "Stump to Pump" marginal and the risk too high." The AA has also got reservations concerning 10% bioethanol blends as it would mean you consume 3% more fuel. Also, isn't the future electric vehicles?
4. The report states that warehousing and bio-forestry could result in approximately (our underline) 1,800 to 2,400 FTE jobs. Where is the evidence of these jobs? Warehousing these days is a highly mechanised operation using robot technology. We would expect the same with

bio-fuel processing. However if the job predictions are correct it would mean a very significant increase in the number of affordable homes needed in Marton and its surrounding area with an increased strain on infrastructure. Since the MTFJ identified the number of unemployed as 441 and the number of youth unemployed as 165 (in 2013), why do we need an industrial site to provide 1800 to 2400 new jobs? On p.34 it states that "if industrial activities are not possible, there will be a loss of employment". We feel that this is scare-mongering since if the industrial activity does not go ahead the status quo will continue. On pages 33, 34 and 35 it states that industrial activities would mean "higher average household incomes". What proof is there that this would be the case or is it just conjecture?

5. Why the need to provide warehousing, in Marton? Palmerston North has, in the last few years, developed large warehousing and industrial sites on Railway Rd. and Napier Rd.
6. The term "reduces the potential for reverse sensitivity by reducing the interface with sensitive activities" is used 8 times in this report (p. 18, 24, 27 (twice), 30, 33 and 34 (twice). We do not understand what this phrase means. However, we feel it is important that it is understandable. Is this gobbledegook or a smoke screen? Plain English please!!
7. Referring to p. 6 of the TPG report. To mention the "One Billion Trees" Programme is misleading and in our opinion, clutching at straws. If pines were planted it would be 30years, at the earliest, before they would be harvested. Also the governments announced program is that a percentage of the trees would be NZ native trees which would not be harvested at all.

To sum up, we don't see too much acknowledgment in this report of the wants and needs of the present population of Marton. In recent years the population has changed significantly with new people making their homes in Marton - both from overseas and from more crowded cities in NZ (witness the lack of rental accommodation and the increase in new builds, prices of existing homes and sections also the fact that property usually sells in days rather than months as it did in the past). As one of those families who chose Marton to escape Wellington to a life more rural (we bought property here in 1990), we are happy with Marton. It's also worth remembering that a lot of the new arrivals are retired people who chose Marton as it is. We do have employment opportunities in Marton. We have counted over 20 businesses in an area of Marton roughly equivalent to the same area as 1165 State Highway 1 and apart from odour issues with TUX, these businesses sit in with residential properties. How's that for clustering!!

Thank you for the opportunity to give feedback,



David and Joy Bowra-Dean





FEEDBACK ON DRAFT DISTRICT PLAN CHANGE AT RANGITIKEI COUNCIL

To: Rangitikei Council
Private Bag 1102
Marton 4741
email Council@info@rangitikei.govt.nz

From: Powerco Limited ("Powerco")
Private Bag 2061
New Plymouth
(Note that this is not the address for service.)

ADDRESS FOR SERVICE: Powerco: Private Bag 2065
New Plymouth 4340
Attention: Rebecca Dearden
Phone: 06 759 6650
Email: Rebecca.Dearden@powerco.co.nz

Draft proposed District Plan Change – rural to industrial – invitation for feedback

Dear Ross McNeil

Thank you for the opportunity to provide a third round of comments on the draft District Plan. These comments are provided on behalf of Powerco Ltd (**Powerco**). Powerco is New Zealand's second largest gas and electricity Distribution Company and has experience with energy distribution in New Zealand spanning more than a century. The Powerco network spreads across the upper and lower central North Island servicing over 400,000 consumers. This represents 46% of the gas connections and 16% of the electricity connections in New Zealand. Powerco supplies electricity to the whole of the Rangitikei District.

The details provided on the proposed draft plan change does not outline proposed lot numbers or lot sizes so at this stage Powerco cannot comment on ability to supply electricity or if we have sufficient capacity to serve potential new industrial sites. As this draft plan change progresses we suggest the council or developers keep in contact with Powerco to ensure supply of electricity to any

proposed new lots. Upgrades of our assets may need to be undertaken, especially for supplying heavy industrial activities and these upgrades can take up to two years to complete, or longer if a new substation is required.

Feedback on supplying power to potential news lots can be provided by Powerco's Planning Engineer Ali Shahini. Ali can be contacted on 06 968 1240 or email at Ali.Shahini@powerco.co.nz

Developers can also contact Powerco through our customer-initiated works (CIW) process to get power supplied to their site/ development. The email for this is CIW.PlanningWestern@powerco.co.nz

Powerco looks forward to providing further feedback on this plan change if it progresses.

Regards



Simon Roche

Environmental Planner

LATE ITEM

TABLED DOCUMENT

16 July 2019

Gaylene Prince

Team Leader

Community & Leisure Services

Rangitikei District Council

Tabled at Council
on 25 July 2019

Dear Gaylene,

I am writing on behalf of *The Taihape Art Society* in relation to the fee structure for the use of the croquet room at 2 Kokako Street as set out in the letter received from you dated 10 July 2019.

We are a small non profit organisation.

We have enjoyed The Taihape Womens Club venue and the flexibility it has offered. We have art three times a week and members attend at their leisure. We are all retired and the flexibility enables us to work around our health, physical inabilities and other commitments as they arise. The experience is very good for our physical and mental health. We are community minded and assist with town initiatives when we can. We are by no means a closed society and would welcome new members. We do and are happy to continue to keep our art room clean and supply our own cleaning and personal supplies.

We are asking if you would please reconsider the fee structure at 2 Kokako Street.

Please can we pay for the power used only and we would be happy for this to be reviewed after 12 months.

This would enable us to view and review the way the Art Society operates. We would not like to operate for fewer days a week so it would enable us to design ways to raise funds if necessary and move forward.

We would be so grateful if this request is given your favourable attention.

Thanks for your time and hope to hear from you soon.

From

Barbara Bell

President. *Taihape Art Society* ph 0279619357