

Wastewater Centralisation Project

28th July 2022 - Hamish Lowe

Introduction

- Purpose: inform RDC of project status and seek guidance with Council engagement and Iwi, Community and Farmers engagement



- Marton WWTP: 100% discharge to Tutaenui Stream
- Bulls WWTP: 100% discharge to Rangitikei River



Centralisation of the WW for Marton and Bulls -
Construction of the pipeline: nearing completion



RDC has engaged LEI to assist with implementing long term sustainable wastewater facilities and discharge options.



Engagement with **Tangata whenua, Community and HRC** essential – and there is a need to keep Council informed



Project



Project has been divided into connected phases

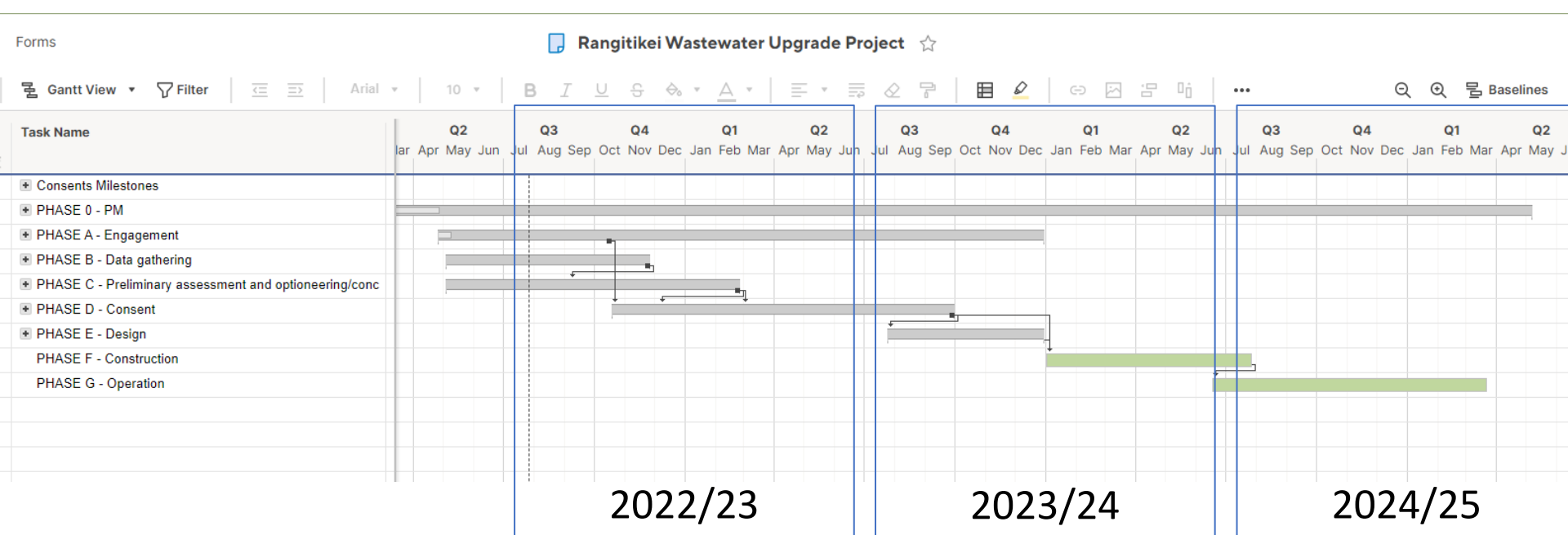


Phase A: Engagement - with **Tangata whenua, Community, and HRC**

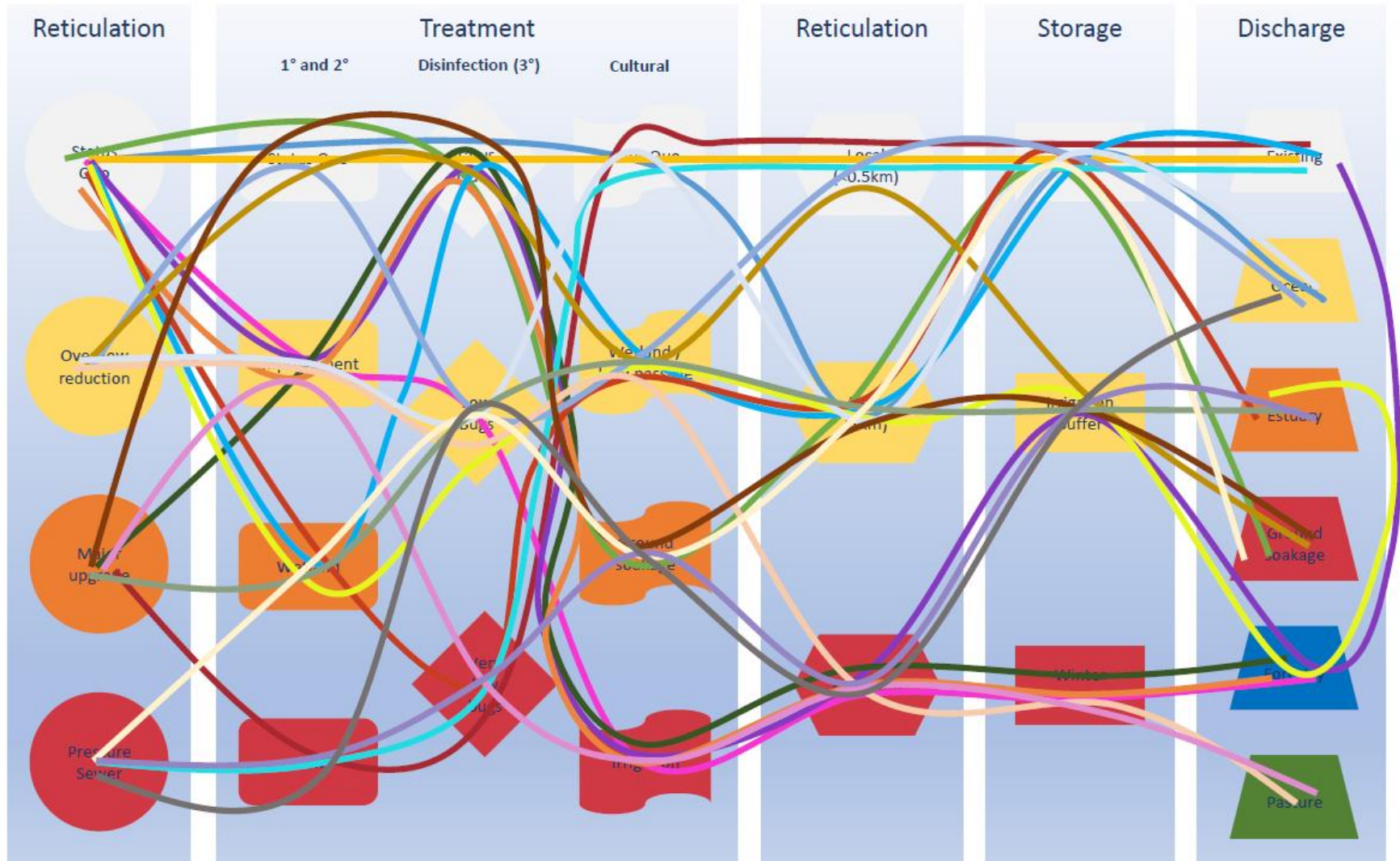


Assists to develop the **best practicable option** (affordable, appropriate and sustainable)

Timeline (high level and indicative)

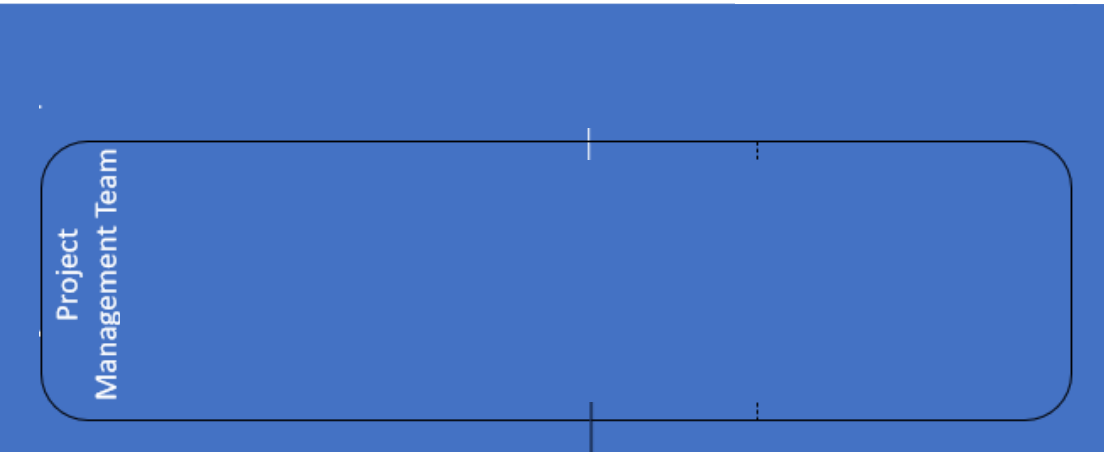


Wastewater management options



Organisational Chart

**Marton and Bulls Wastewater
Centralisation Project**
Organisational chart of key project contributors

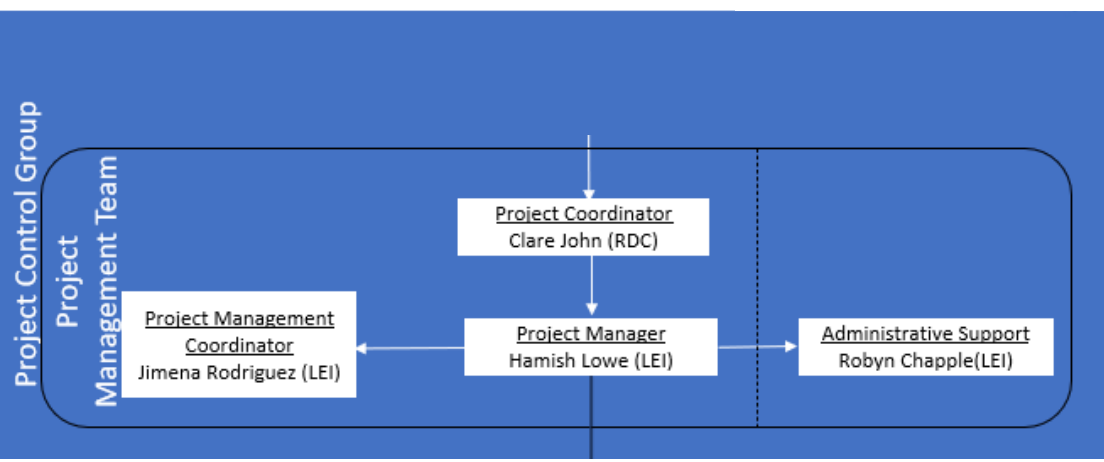


Organisational Chart

Marton and Bulls Wastewater

Centralisation Project

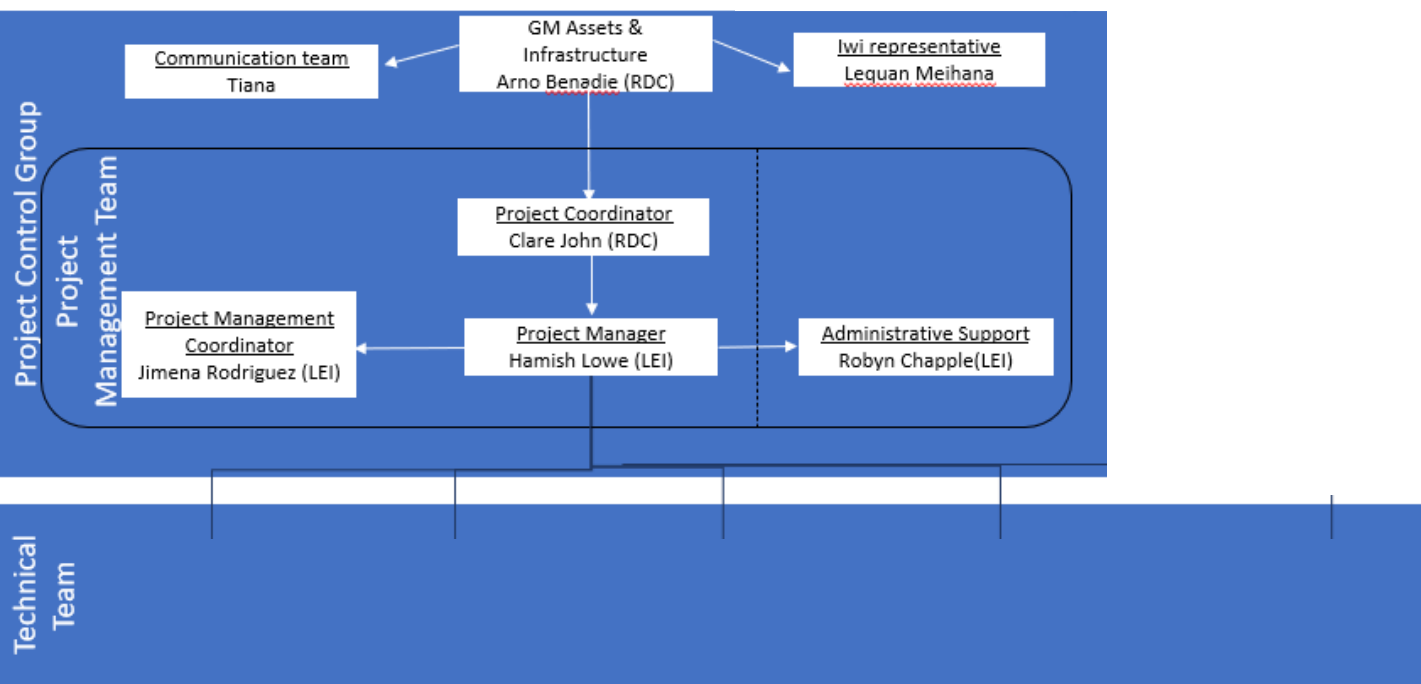
Organisational chart of key project contributors



Organisational Chart

Marton and Bulls Wastewater Centralisation Project

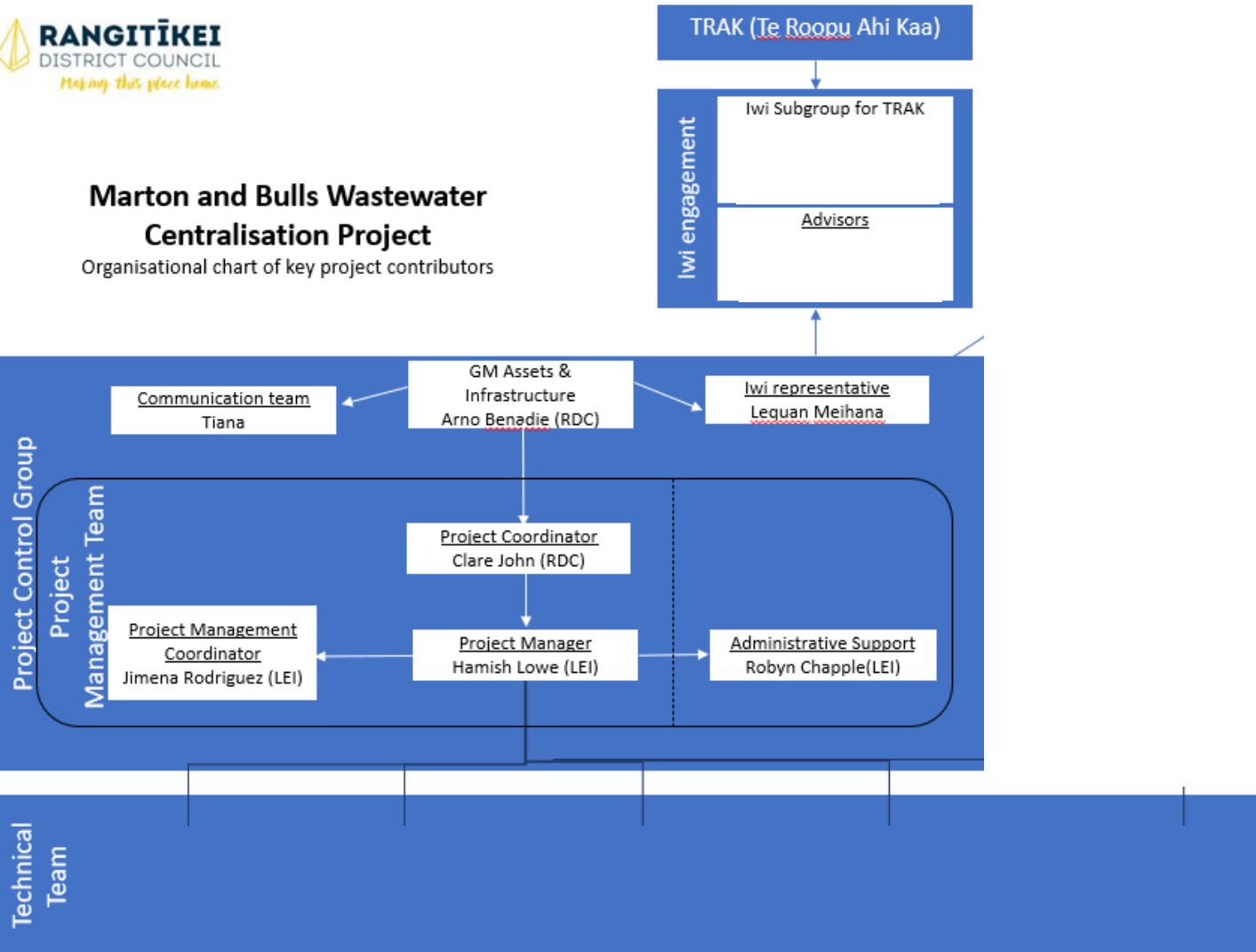
Organisational chart of key project contributors



Organisational Chart

Marton and Bulls Wastewater Centralisation Project

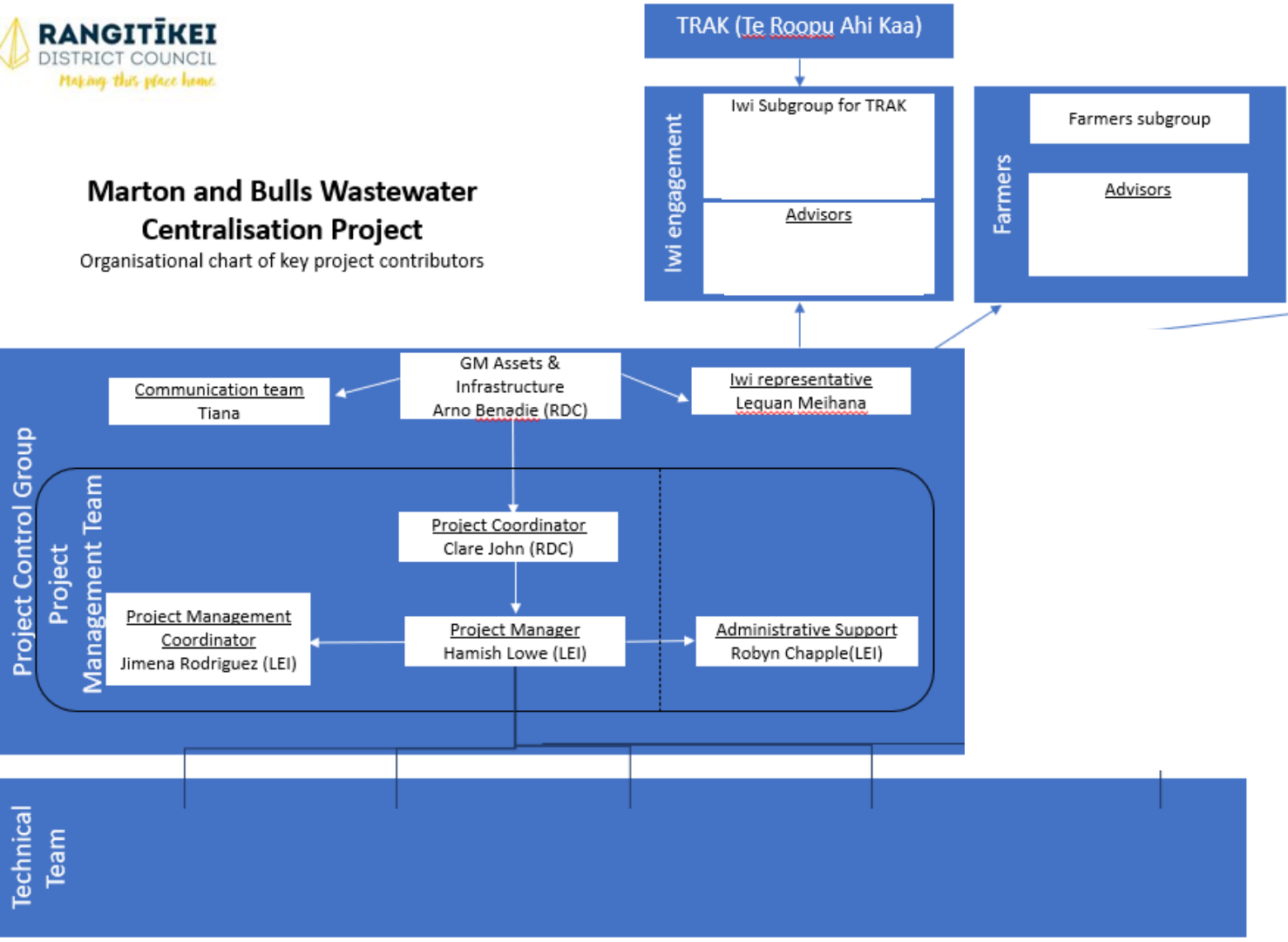
Organisational chart of key project contributors



Organisational Chart

Marton and Bulls Wastewater Centralisation Project

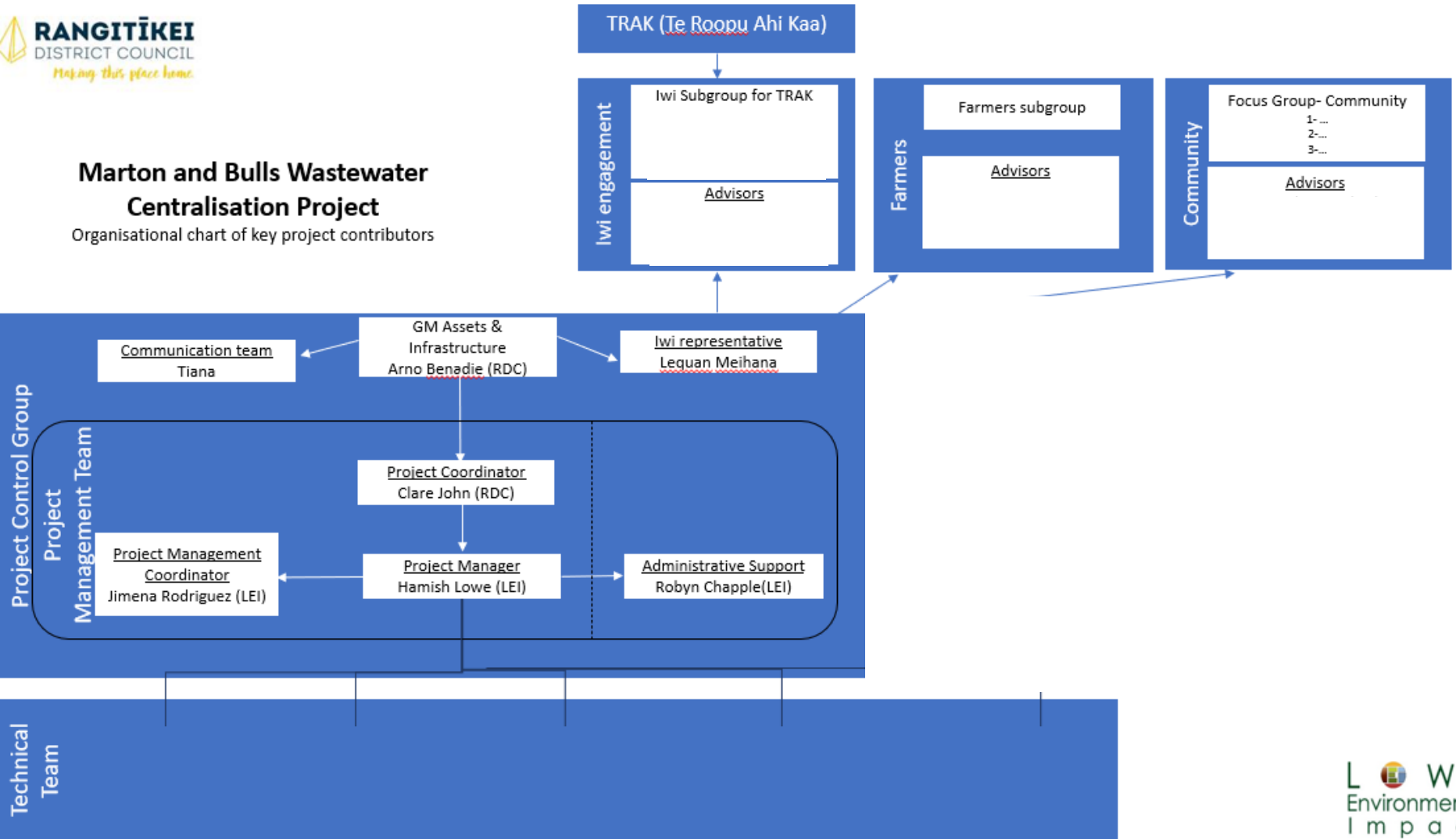
Organisational chart of key project contributors



Organisational Chart

Marton and Bulls Wastewater Centralisation Project

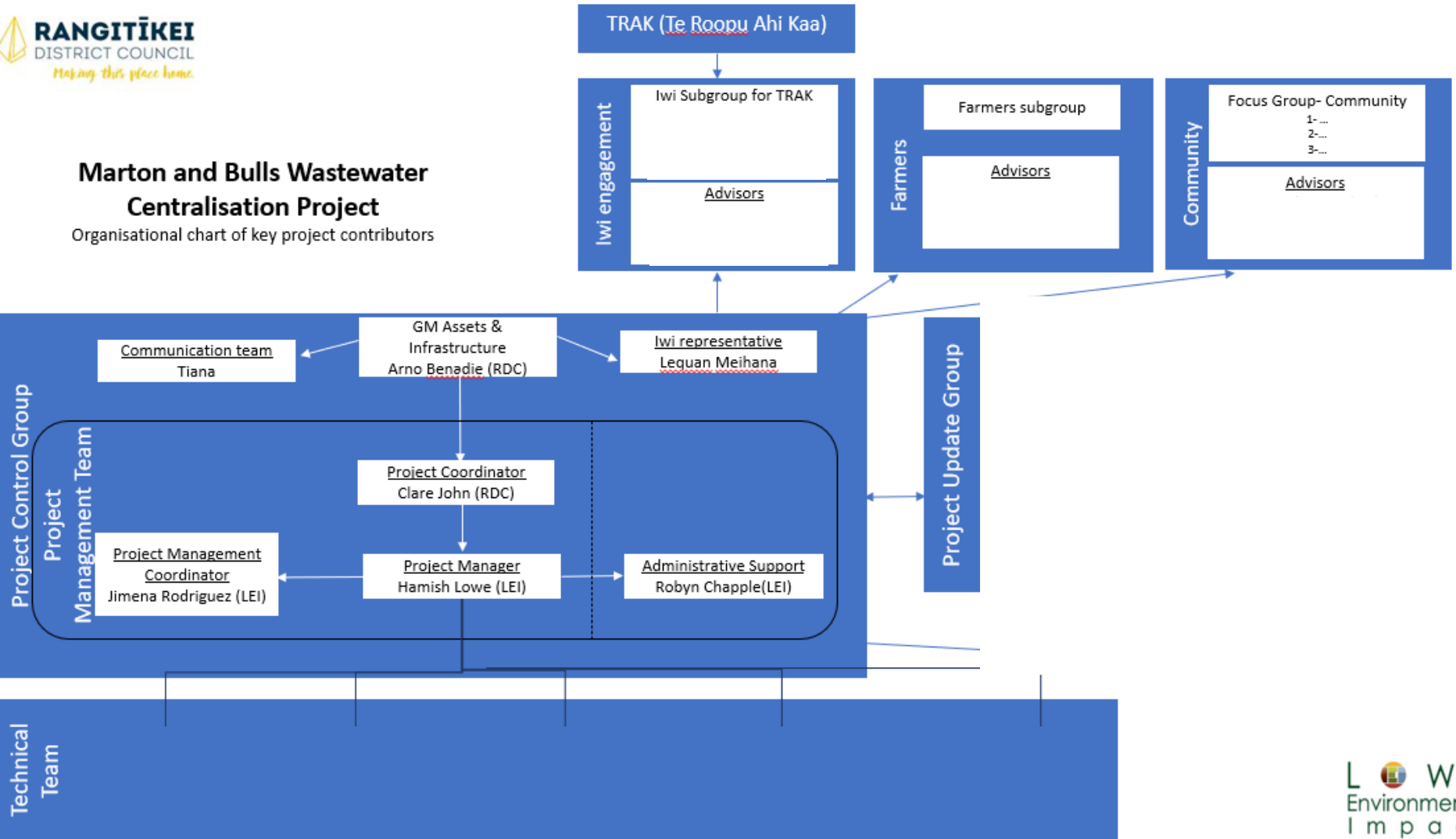
Organisational chart of key project contributors



Organisational Chart

Marton and Bulls Wastewater Centralisation Project

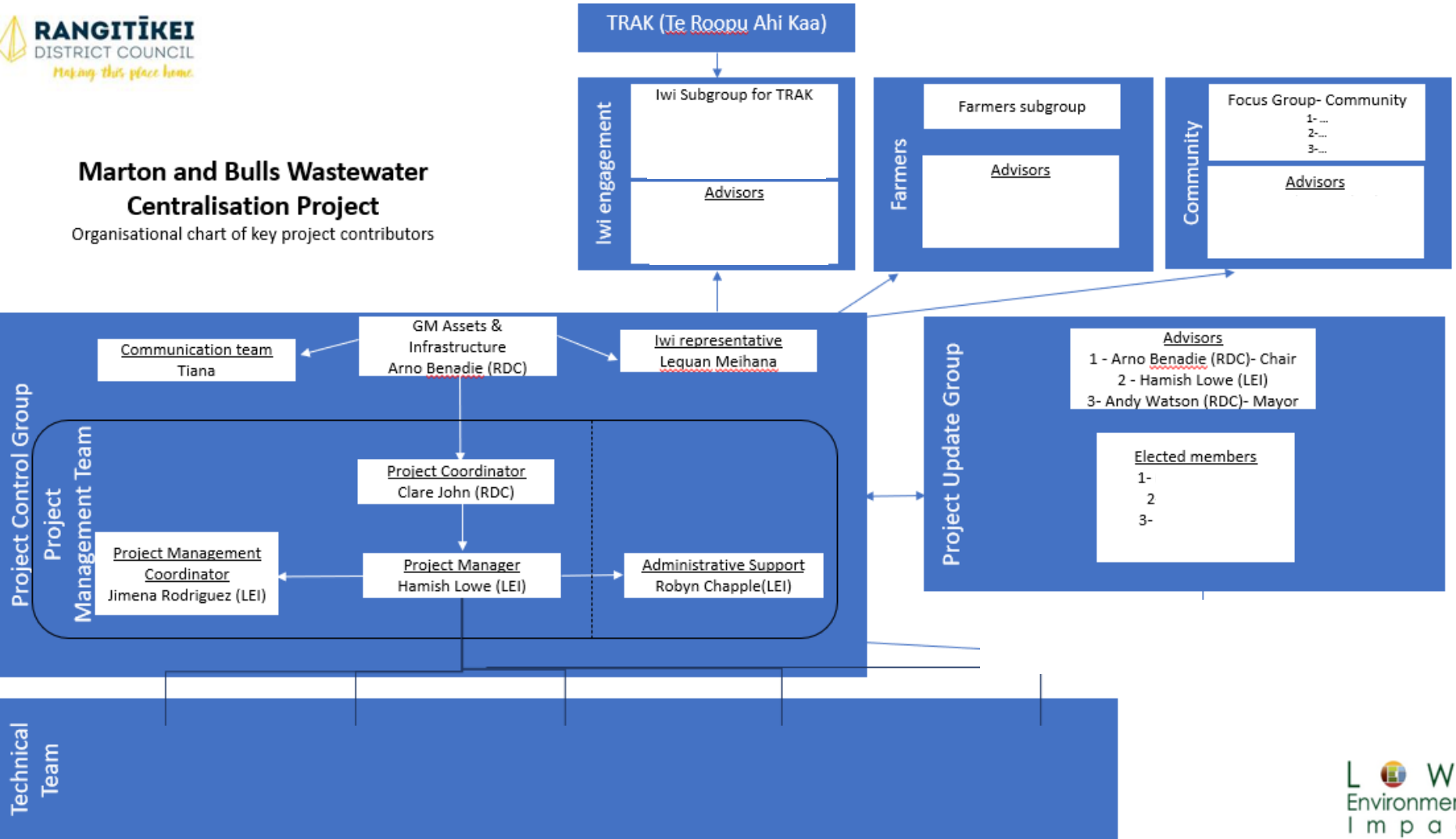
Organisational chart of key project contributors



Organisational Chart

Marton and Bulls Wastewater Centralisation Project

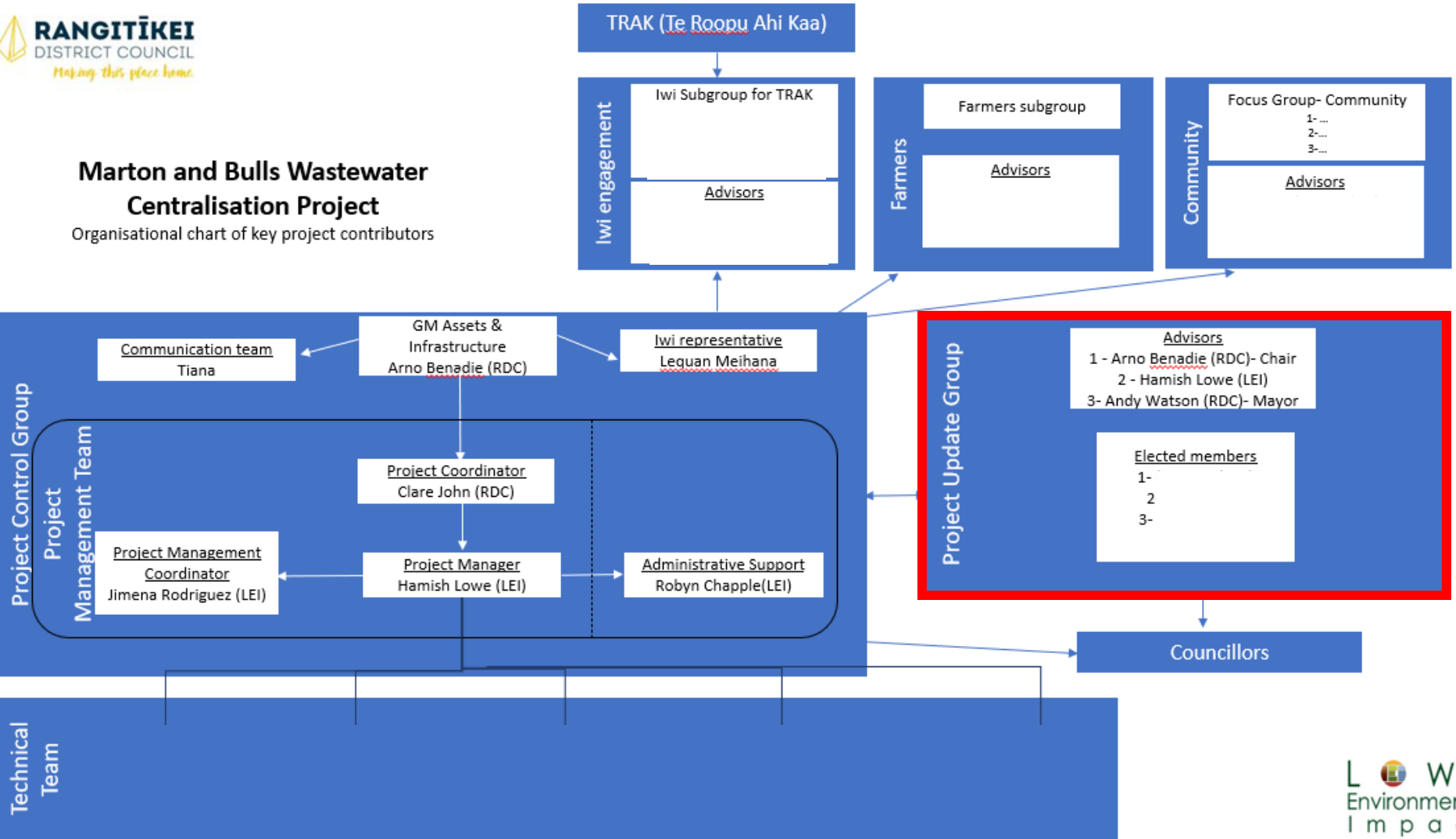
Organisational chart of key project contributors



Organisational Chart

Marton and Bulls Wastewater Centralisation Project

Organisational chart of key project contributors



Project Update Group (PUG)

- **Purpose:** exchange detailed information and for project team to seek guidance from in lieu of full council.
- **Membership:** Mayor (Andy Watson) and Councillors (1, 2, 3), Arno Benadie (Project Sponsor); Hamish Lowe (Project Manager and Advisor)
- **Frequency of meetings:** every two months (first meeting in August will be face to face?)
- PUG to report to Council

Tangata Whenua engagement

TRAK – was held in June 2022



Iwi Subgroup – to represent iwi interests and contribute ideas – know what is going on

Community engagement-Focus group

Community – to be informed and know what is happening



Focus group– to represent the community interests and contribute ideas – know what is going on



Questions

- Who involved/membership in the Focus Group?
- What report/information does FG and community want from us?
- What is the frequency of reporting and meeting?

Farmer engagement

Farms located up to 2 km from the pipeline



Group of interested farmers in having free treated WW for irrigation



To form a 'Farmers Subgroup'



- The aim of this group will be mainly to engage farmers that are interested on having WW for irrigation....

What's the question?

- Comments on structure and planning?
- Ok with the engagement structure?
 - Tangata whenua
 - Community
 - Farmers
 - PUG
- What reporting does council want?