

ORDER PAPER

ORDINARY COUNCIL MEETING

Date: Thursday, 15 May 2025

Time: 9.30am

Venue: Council Chamber
Rangitikei District Council
46 High Street
Marton

Kokako Street Hall
Taihape

Chair: HWTM Andy Watson

Deputy Chair: Cr Dave Wilson

Membership: Cr Brian Carter
Cr Gill Duncan
Cr Richard Lambert
Cr Piki Te Ora Hiroa
Cr Coral Raukawa
Cr Jeff Wong
Cr Simon Loudon
Cr Greg Maughan
Cr Fi Dalgety
Cr Paul Sharland

For any enquiries regarding this agenda, please contact:

Kezia Spence, Governance Advisor, 0800 422 522 (ext. 917), or via email

kezia.spence@rangitikei.govt.nz

Contact:	0800 422 522 info@rangitikei.govt.nz www.rangitikei.govt.nz (06) 327 0099
Locations:	<div> <u>Marton</u> Head Office 46 High Street Marton </div> <div> <u>Bulls</u> Bulls Information Centre Te Matapihi 4 Criterion Street Bulls </div> <div> <u>Taihape</u> Taihape Information Centre 102 Hautapu Street (SH1) Taihape </div>
Postal Address:	Private Bag 1102, Marton 4741
Fax:	(06) 327 6970

Notice is hereby given that an Ordinary Meeting of Council of the Rangitīkei District Council will be held in the Council Chamber, Rangitīkei District Council, 46 High Street, Marton and in the Kokako Street Hall, Taihape, on Thursday, 15 May 2025 at 9.30am.

Order Of Business

1	Welcome / Prayer	4
2	Apologies	4
3	Conflict of Interest Declarations.....	4
4	Reports for Information.....	5
	4.1 Hearing of Submissions on the Annual Plan 2025/26 & Co	5
5	Meeting Closed	37

AGENDA

ITEM 8.1

1 Welcome / Prayer

2 Apologies

3 Conflict of Interest Declarations

Members are reminded of their obligation to declare any conflicts of interest they might have in respect of items on this agenda

4 Reports for Information

4.1 Hearing of Submissions on the Annual Plan 2025/26 & Co

Author: Janna Harris, Corporate Planner

Authoriser: Tiffany Gower, Strategy Manager

1. Reason for Report

- 1.1 The purpose of this report is to provide details for the oral submissions that will be heard by Council in relation to consultation undertaken for the Annual Plan 2025/26 & Co.

2. Context

- 2.1 On 27 March 2025, Council adopted the Draft Annual Plan 2025/26 as well as the Draft Schedule of Fees and Charges 2025/26, Draft Waste Management and Minimisation Plan (WMMP), and the Draft Dangerous, Affected and Insanitary Buildings Policy for consultation.
- 2.2 Consultation began on Friday, 4 April 2025, and ended on Monday, 5 May 2025.
- 2.3 To speak at the hearing, a submitter must make a written submission to Council that indicates that they would like to speak at the oral hearing.
- 2.4 As of Friday, 9 May 2025 three (3) submitters are scheduled to speak at the oral hearing.
- 2.5 The hearing schedule and collated submissions of those who are scheduled to speak at the oral hearing are attached (Attachment 1).

3. Financial Implications

- 3.1 There are no financial implications associated with the oral hearing. Any financial implications associated with the topics raised by submitters at the oral hearing or contained in the written submissions will be identified within the future Deliberations Report.

4. Impact on Strategic Risks

- 4.1 There are no impacts on strategic risk associated with the oral hearing. Any strategic risks associated with any topics raised in oral or written submissions will be indicated by Officers within the future Deliberations Report.

5. Strategic Alignment

- 5.1 Strategic alignment has not been considered for the oral hearing. Any strategic alignment considerations for submissions will be indicated by Officers within the future Deliberations Report.

6. Mana Whenua Implications

- 6.1 There are no Mana Whenua implications associated with the oral hearing. Any Mana Whenua implications associated with topics raised by submissions will be considered as part of the Deliberations Report.

ITEM 8.1**7. Climate Change Impacts and Consideration**

- 7.1 There are no Climate Change implications associated with the oral hearing. Any Climate Change implications associated with submissions will be identified within the Deliberations Report.

8. Statutory Implications

- 8.1 The oral hearing is part of the consultation process required by the Local Government Act.

9. Decision Making Process

- 9.1 This oral hearing is part of the consultation process for the Annual Plan 2025/26, Schedule of Fees and Charges, WMMP, and Dangerous, Affected and Insanitary Building Policy.
- 9.2 Council will deliberate on the topics raised in the oral and written submissions at the Deliberations Meeting scheduled for Thursday, 5 June 2025, with the Annual Plan to be adopted before 30 June 2025.

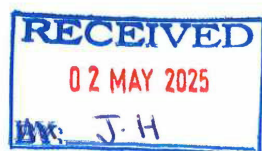
Attachments:

1. Annual Plan 2025/26 & Co Oral Hearing Submissions [↓](#)

Recommendation

That the report 'Hearing of Submissions on the Annual Plan 2025/26 & Co' be received.

Submission Number	Name	Organisation	Time	Page number	Location
#21	Kate Williams	Rangitikei Branch of Forest and Bird	9.35am	2	Marton
#13	Felicity Wallace	Interested Residents of Marton and Rangitikei	9.45am	6	Marton
#11	Charlotte Oswald	Taihape Playground Group	9.55am	11	Taihape



Submission on the Rangitikei District Council Annual Plan 2025-2026

To: Rangitikei District Council [RDC]
info@rangitikei.govt.nz

Submitter: Rangitikei Branch of Forest & Bird
 c/- Kate Williams

Purpose of the submission:

1. To request that RDC includes road safety improvements at McPhersons Reserve [Turakina Valley] in the 2025-2026 Annual Plan.
 RDC has estimated the cost of the improvements [realign the road boundary fence, rehabilitate the water table and construct a car parking area parallel to the Turakina Valley Road] would be \$46,000.

Rangitikei Branch of Forest & Bird **does** wish to be heard in support of its submission.

Background:

1. Forest & Bird own 6 native forest Reserves in the Rangitikei area all of which are maintained by volunteers from the Rangitikei Branch. All these Reserves have walking tracks and are open to the public to enjoy the significance of original native forest.
2. The 9Ha McPhersons Reserve is situated on the Turakina Valley Road and was part of the landholdings of Alex Mcpherson Jnr. He wished to save his forest from being taken over by the Government for timber required for the war effort so donated it to the Rangitikei Scenery Preservation and Tree Planting Society on March 18th 1941.
3. In 1961 that society merged with Forest & Bird and from that merger Forest & Bird gained McPhersons and Pryces Rahui Reserves.





4. McPhersons Reserve has an internal track system with a stream running through the middle spanned by a wooden bridge. Its forest consists of impressive stands of Tawa with Titoki and emergent Kahikatea, Rewarewa, Matai and occasional Miro and Rimu. It is also home to a number of native birds.

5. Members of Rangitikei F & B are working hard to promote the significance of their reserves and are currently making improvements to attract more visitors.

Scope of the project:

- Improved signage and advertising would result in increased usage of McPhersons Reserve but we are hindered by a lack of safe parking which is a concern to our organisation and some visitors. At present, as well as parking on the actual road, visitors have to negotiate a drain to reach the stile at the entrance-way. To avoid this same drain, car owners park more on-road than off-road.
- We have met on-site with Philip Gifford from Rangitikei District Council and agreed that a safe and fit for purpose option would require off-setting the fence and water table by 1.5m to accommodate a 3.5m wide by 40m long sealed car-parking area.
- Rangitikei Forest & Bird would carry out some improvements to the entrance themselves.

Kate Williams

2nd May 2025

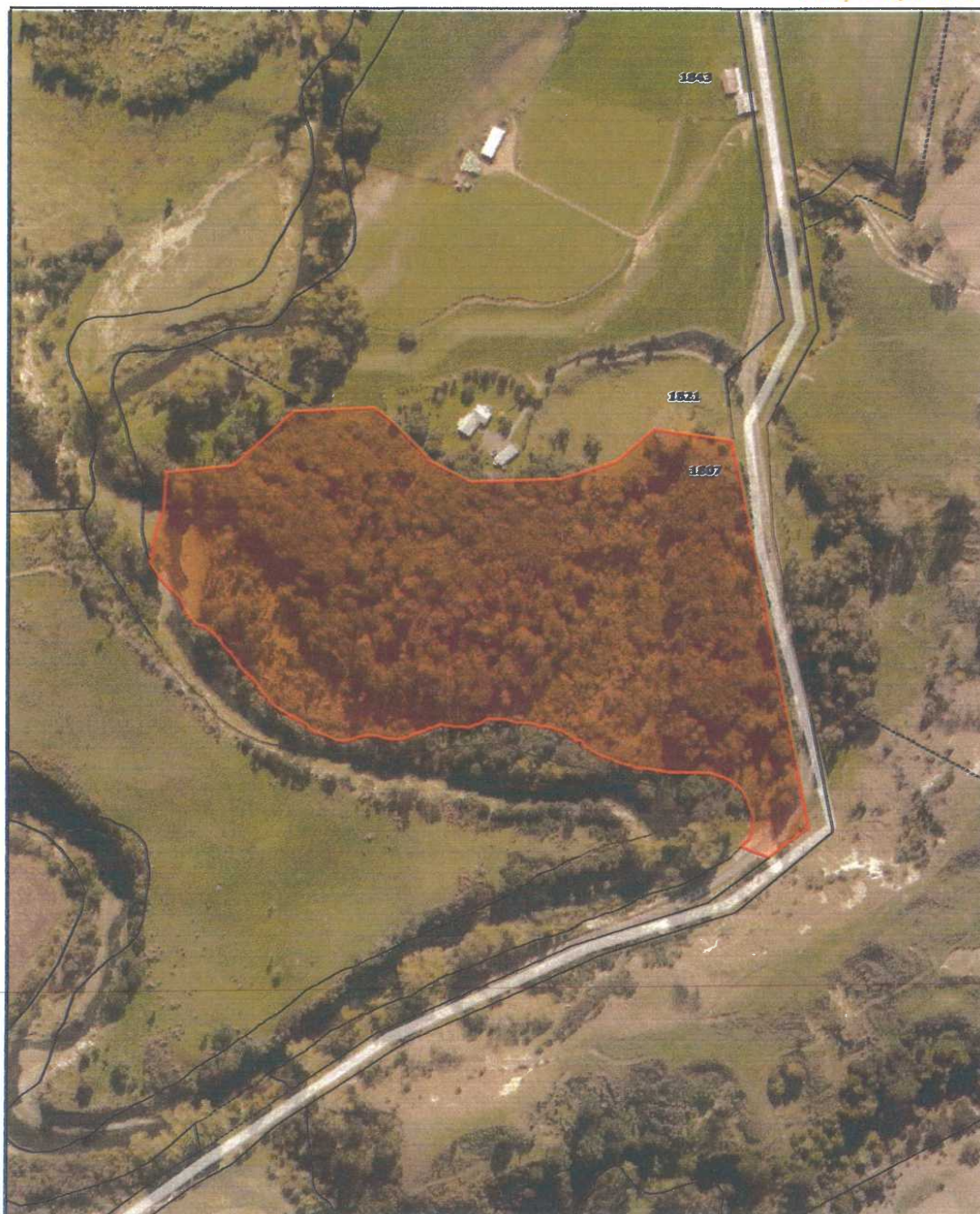


ITEM 8.1 ATTACHMENT 1



Print Date: 10/12/2021
Print Time: 11:09 AM

McPhersons



Scale: 1:4000
Original Sheet Size A4

Projection: NZGD2000 / New Zealand Transverse Mercator 2000
Bounds: 1798853.11688032, 5576534.0676553
179885.72512348, 5576813.37903151

Digital map data sourced from Land Information New Zealand. CROWN COPYRIGHT RESERVED.
The information displayed in the GIS has been taken from Rangitikei District Council's databases and maps.
It is made available in good faith but its accuracy or completeness is not guaranteed.
All excavations near council assets to be undertaken with due care. Contractors will be liable for damages.
If the information is relied on in support of Resource Consent it should be verified by independent survey.



Annual Plan & Co @ Submission Form

Ingoa/Name:

Felicity Wallace

Is your feedback on behalf of an organisation?

Yes

Tōpūtanga/Organisation (if applicable):

Interested Residents of Marton and Rangitikei

Kāinga noho/Address:

Īmēra/Email:

Waea/Phone:

Would you like to speak to your submission:

Please tick this box if you would like to speak to your submission at the Council Hearings on 15 May 2025. Someone will contact you to confirm this.

How did you hear about this consultation?



Do you agree with our vision for waste management and minimisation in the Rangitīkei?*

Agree

Comment

refer submission attached

Reduce the amount of material entering the waste management system by 10% per person:

Agree

Reduce the amount of material that needs final disposal by 30% per person:

Agree

Reduce the biogenic methane emissions from waste by at least 30%:

Agree

Comment

Refer to attached submission

Do you support the Draft Dangerous, Affected and Insanitary Buildings Policy?*

Yes see attached submission

Are there any fees/charges you think should be changed?*



Do you think Rangitikei District Council's programme of work proposed in the Annual Plan 2025/26 reflects the needs and priorities of the community?*

Disagree

Why? or Why not?

Refer attached submission

Which projects or services would you like to hear more about?*

Community Leadership, Roothing, Parks and Reserves, Community

Comment:

*Please include more pages if required:

IRO-MAR Submission RDC AP 2025 FINAL_.pdf, 0.03MB

Anything else?

Submission on the Rangitikei District Council Annual Plan 2025-2026

To: Rangitikei District Council
info@rangitikei.govt.nz

Submitter: Interested Residents of Marton and Rangitikei
c/- Felicity Wallace

Introduction

- 1 Interested Residents of Marton and Rangitikei (**IRO-MAR**) wish to be heard in support of its submission.
- 2 IRO-MAR advocates for a group of residents living in Marton and the wider Rangitikei district who hold a strong affinity and commitment to the land and people of Rangitikei district, it's health and well-being.
- 3 We wish to see our district grow and flourish but not at the cost of the amenity and environment that make this area a special place to live.
- 4 We support environmentally-best practice development and protection of Rangitikei District , including its rural environment and communities, its flora, fauna, endangered species and soils.
- 5 We appreciate this opportunity to take part in the Annual Plan 2025/2026 process.

General comments:

1. IRO-MAR thanks Council for the positive work that has been completed on Towns placemaking and Wayfinding maps; and the Marton Mainstreet Streetscape.
2. IRO-MAR notes there are some significant and material differences from the LTP2024-2034 that should be notified to our community in this Annual Plan.
 - a) The withdrawal of the MRH funding that was to service the MIDA
 - b) There is a significant Council overspend on MRH/MIDA left stranded in Council accounts with limited ability for Council to recoup these costs through an increased rates take. This is a cost to ratepayers.

- c) Why has capital funding for roading changed to \$9.1m from about \$14m forecast?
- d) There is significant capital underspending: capital spend rollovers need to be accompanied by a clear implementation plan to assure the community that rates funding is being allocated in accordance with the LTP.

Consultation items highlighted by Council in the Annual Plan:

This submission is made in **support** of the proposed:

Key Consultation Topic1:Draft Waste Management and Minimalisation Plan:

- a) IRO-MAR notes that the NZ Waste Strategy referenced has been revised in March 2024
- b) IRO-MAR supports the Draft strategy and the targets set for 2030, which are in alignment with the current National Strategy.

Key Consultation Topic 2: Draft Dangerous and Insanitary Buildings Policy

- a) IRO-MAR supports the changes made to the Draft Dangerous, Affected and Insanitary Building Policy, which align the policy to government requirements for the approach, priorities and application to heritage buildings outlined in the Building Act 2004.
 - a. IRO-MAR strongly encourages the Council to support building owners to re-develop and re-furbish existing buildings; and to develop separate policy that supports our strong community networks to develop and maintain their buildings.

This submission wishes to comment on the following:

Planned Programme of Work:

- a) IRO-MAR remains concerned that forecast capital spends are not being spent etc while debt levels continue to increase. At the same time Council continues to run deficits.
- b) Improvement of Community Facilities:
 - a. Marton Pool: IRO-MAR supports Council to investigate development options for this significant community asset. Development plans should include an holistic assessment of location; Geotech advice; and optimal and potential relationships with other community facilities.

Felicity Wallace

On behalf of IRO-MAR

Dated: 01-05-25



Annual Plan & Co @ Submission Form

Ingoa/Name:

Charlotte Oswald

Is your feedback on behalf of an organisation?

Yes

Tōpūtanga/Organisation (if applicable):

Taihape Playground Group

Kāinga noho/Address:

Īmēra/Email:

Waea/Phone:

Would you like to speak to your submission:

Please tick this box if you would like to speak to your submission at the Council Hearings on 15 May 2025. Someone will contact you to confirm this.

How did you hear about this consultation?

Meeting



Do you agree with our vision for waste management and minimisation in the Rangitikei?*

Comment

Reduce the amount of material entering the waste management system by 10% per person:

Reduce the amount of material that needs final disposal by 30% per person:

Reduce the biogenic methane emissions from waste by at least 30%:

Comment

Do you support the Draft Dangerous, Affected and Insanitary Buildings Policy?*

Are there any fees/charges you think should be changed?*



Do you think Rangitikei District Council's programme of work proposed in the Annual Plan 2025/26 reflects the needs and priorities of the community?*

Why? or Why not?

Which projects or services would you like to hear more about?*

Community Leadership, Parks and Reserves, Community

Comment:

*Please include more pages if required:

Presentation for Taihape Play Area - Option 3.pdf, 6.06MB

Anything else?

The Playground group have received our draft plans (see attached) for a new playground near the grandstand at Memorial Park. This includes a covered area with BBQ facilities and picnic table seating.

We feel this addition will be a great asset to the Park, and can be used for events such as birthday parties, fundraisers, or to just sit and watch horse or rugby events in the shade, or children playing.

We would like the council to consider funding this asset. First cost estimates have come in at \$67,249.

We are trying to create a playground for the whole community, and visitors to the region to enjoy. We feel this shelter would be a valuable resource to encourage visitors to stop, and for



our residents to benefit from.

Thank you for your support of this project thus far.

Taihape Community Group

Play Area



Concept
Presentation

4 March 2025

Taihape Community Group – Play Area



Taihape Community Group – Play Area



Taihape Community Group – Play Area



Taihape Community Group – Play Area



Taihape Community Group – Play Area



Taihape Community Group – Play Area



Taihape Community Group – Play Area



Taihape Community Group – Play Area



Taihape Community Group – Play Area



Taihape Community Group – Play Area



Taihape Community Group – Play Area



Taihape Community Group – Play Area



Taihape Community Group – Play Area



Taihape Community Group – Play Area

Quality & Compliance

Safety, quality and durability are the cornerstones of our solutions. Built for durability and low maintenance, they provide value for money and hassle-free performance, year after year.

Our New Zealand-made equipment is supported by a range of warranties, including a 25-year conditional warranty on the structural integrity of selected steel and timber poles. It’s a tangible demonstration of our experience, track record and commitment – so you can be confident about exactly what you’re getting.

Our globally sourced products also come with manufacturers’ warranties and originate from industry leaders who share our passion for excellence.

Importantly, all of our equipment is backed by quality assurance, safety certification, and structural compliance including:

- AS/NZS ISO 9001:2008
- AU 4685
- AU 4422
- EN 1176
- NZ5828
- Grade 3 Royal Society for the Prevention of Accidents (ROSPA) accreditation of key personnel.

Warranties

25 Year Warranty

- On the structural integrity of
- Hot Dip Galvanised Steel Poles
 - Aluminium Poles
 - Stainless Steel Hardware
 - H5 Tanalised Timber Poles

10 Year Warranty

- On the structural integrity of part or parts of
- Timber
 - Steel
 - Rotational-moulded plastic
 - Engineered Plastic Sheets

5 Year Warranty

- Against colour fading of powdercoating, including Red
- Springs
- Hercules rope & connections

2 Year Warranty

- Moving parts
- Electronic components

Period Of Warranty

Our warranties apply from date of invoice to the original customer and the period varies according to the product group. Please see above.

Our warranties cover parts of equipment found to have undergone structural failure due to defective materials.

We will repair or replace the defective part at Playground Centre’s discretion, and the defect is not due to:

- (i) vandalism, negligence, abuse, accidents, lack of maintenance or improper installation;
- (ii) products tampered with, modified or repaired by anyone when not previously approved by Playground Centre;
- (iii) Fair wear and tear;
- (iv) Harsh or corrosive elements where preventative procedures as set out in our Maintenance instructions – pages (1), (2) and (3) have not been adhered to – see Resources on website.

Maintenance

All warranties are conditional on owners maintaining their investment by adhering to our Maintenance & Inspection Manual – see resources on website – to extend life of products.

Design

Due to our commitment to continual improvement, we reserve the right to improve or alter designs in this catalogue.

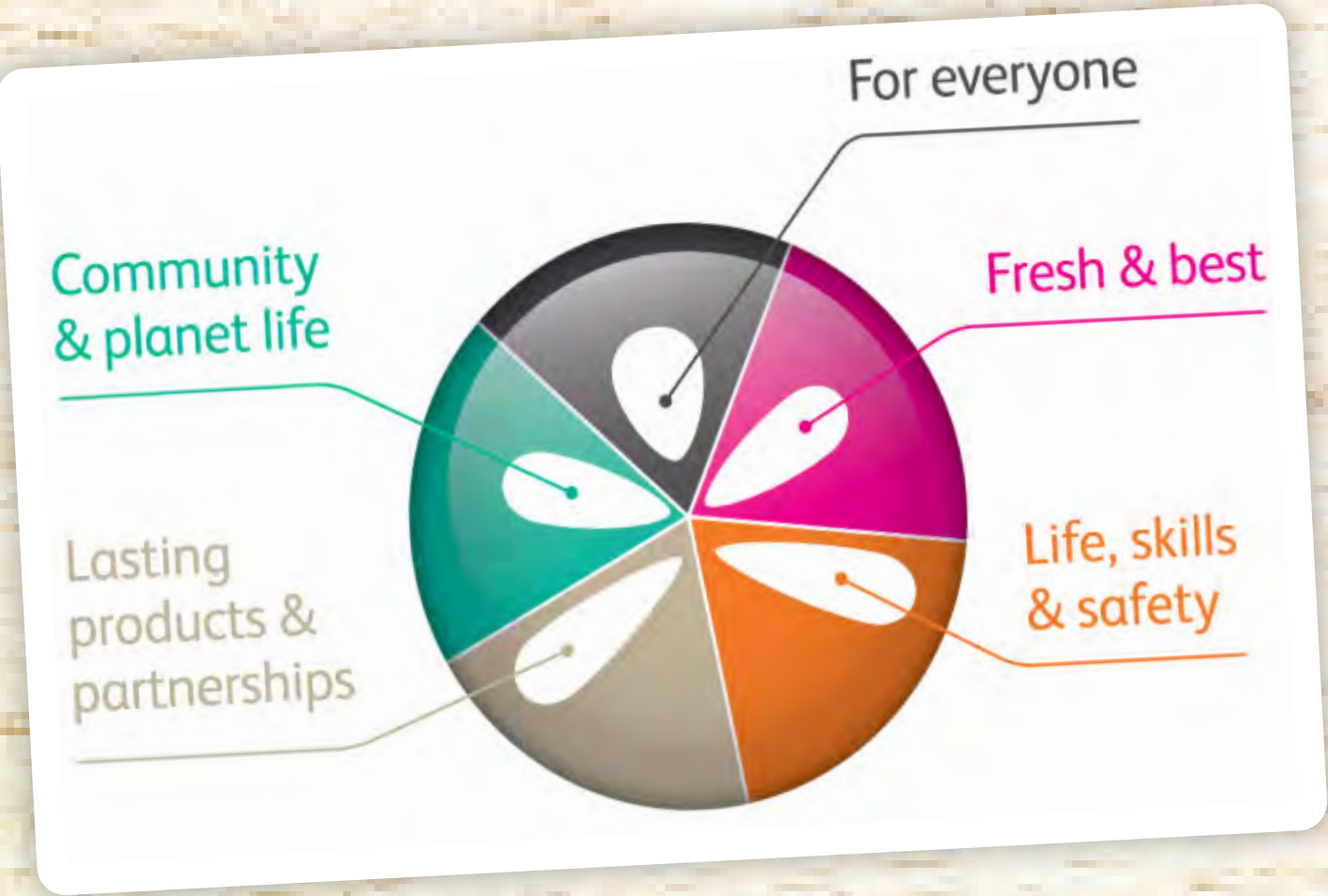
Safety Areas

Requirements for safety areas could vary to different countries and are subject to final design approval.

Taihape Community Group – Play Area

Playground Centre Values

For us, it's about bringing together the pieces to deliver the perfect combination for you.



For everyone

Pure fun + targeted personal benefits for every age. Designed to embrace all abilities and meet universal needs for play, learning and well-being. Made for NZ climate so tough enough for 'play' around the world.

Fresh & best

Leading trends translated into innovative, unique and creative solutions. Global partnerships and international presence to source from and deliver the best and widest selection.

Life, skills & safety

Beyond fun for fun's sake: target specific physical benefits, development and social skills. Strong and age-appropriate products that meet or exceed all relevant safety standards.

Lasting products & partnerships

Real, enduring client relationships through exceptional service. Expertise, efficiency and track record you can rely on. Exceptional safety, quality, strength and durability.

Community & planet life

Genuine, proven commitment to customers, end-users and communities. Inclusive approach to ensure equality and accessibility. Environmental and sustainable practices and outlook.

5 Meeting Closed