

Rangitikei District Council

Telephone: 06 327-8174

Facsimile: 06 327-6970

Rangitikei
UNSPOILT...

Creative New Zealand Funding Assessment Committee

Order Paper

Wednesday 27 April 2016, 10.00 am

Council Chamber,
46 High Street, Marton,

Chair

Debbie Benton

Membership

Jill Bainger, Pam Bradley, Philippa Durrant, Katarina Hina, Tam Hiscotte, Gill Duncan,
Cr Rebecca McNeil

His Worship the Mayor, Andy Watson, (ex officio)

Please Note: Items in this Agenda may be subject to amendments or withdrawal at the meeting. It is recommended therefore that items not be reported upon until after adoption by the Council. Reporters who do not attend the meeting are requested to seek confirmation of the Agenda material or proceedings of the meeting from the Chief Executive prior to any media reports being filed.

Rangitikei District Council

Creative Communities Assessment Committee Meeting
Order Paper – Wednesday 27 April 2016 – 10:00 a.m.



Contents

1	Welcome	2	
2	Opportunity for applicants to address the Committee.....	2	
3	Apologies.....	2	
4	Confirmation of minutes	2	Attachment 1, pages 5-10
5	Creative Communities Applications April 2016.....	2	Attachment 2, pages 11-115
6	Next Meeting	3	
7	Meeting Closed	3	

- 1 Welcome**
- 2 Opportunity for applicants to address the Committee**
- 3 Apologies**
- 4 Confirmation of minutes**

Recommendation

That the Minutes of the Creative Communities Funding Assessment Committee meeting held on 25 November 2015 be taken as read and verified as an accurate and correct record of the meeting.

5 Creative Communities Applications April 2016

A report is attached.

File ref: 3-GF-3

Recommendations

- 1.1 That the report 'Creative Communities Applications April 2016' be received.
- 1.2 That the Creative New Zealand Funding Assessment Committee agrees/does not agree [delete one] to consider the late application from the James Cook School.
- 1.3 That the Creative New Zealand Funding Assessment Committee approve/decline the applications, listed below, on behalf of the Creative Community Scheme (Creative New Zealand), and disburse the funds to successful applicants:
 - Bulls and District Community Trust: Wear-a-bull Arts 2016 \$
 - James Cook School: Mural to be completed by the School Art Club and community artists \$
 - Marton and District Pipe Band: Tuition and tutorial fees \$
 - Marton Country Music Festival: Staging the event in January 2017 \$
 - Marton Players Inc: Putting on two one act plays during July \$
 - Samoan Community Support Committee: Performances as part of a celebration of Samoan Independence Day \$
 - Virginia Warbrick: TAH180 – the hole in the ground \$
- 1.4 That the following Creative Communities Project Report Forms be received:
 - Taihape Community Development Trust (costs of staging workshops to encourage participation in 'Gumboot Day' events)
 - Pauline Baddeley (costs of materials for memorial to mark the WW1 anniversary)
 - Bulls and District Community Trust (costs as outlined in the quote from Party Up Ltd, excluding 1L carafe's and 350mL wine glasses. Printing costs as outlined in the quote

from Wickliffe NZ Ltd. Design work as outlined in the quote from Black Sheep Design Ltd.).

- Highland Dancing Assn Manawatu/Rangitikei/Wanganui (funding cannot be used for the following costs: Competition registration, prize money, judges fees, sashes & rosettes, medals & trophies)
- Marton Country Music Festival (towards the cost of hiring equipment for the Festival from Party Up Ltd, in line with the quote provided in the application)
- Marton and District Pipe Band (cost of tutoring lessons for learners and current members of the Pipe Band. The Creative Communities Scheme committee has asked that for future applications to the Scheme, the organisation considers opening up tutoring to non-band members to try and encourage community participation or consider holding open workshop sessions)
- Turakina Caledonian Society (costs associated with hiring equipment for the Games, in line with the quote from Party Up Ltd)
- Rangitikei Country Quilters (venue hire for the Quilt Show)
- Taihape Community Development Trust (facilitator for creative workshops for Gumboot Day 2016)

6 Next Meeting

23 November 2016, 10.00 am

7 Meeting Closed

ATTACHMENT 1



Rangitikei
COUNCIL

Rangitikei District Council

Creative Communities Assessment Committee

Minutes – Wednesday 25 November 2015 – 10:00 a.m.

Contents

1	Welcome.....
2	Opportunity for applicants to address the Committee
3	Apologies
4	Confirmation of minutes.....
5	Creative Communities Application November 2015
6	Next Meeting
7	Meeting Closed.....

Present:

Ms Debbie Benton (Chair)
Ms Tam Hiscotte
Ms Gill Duncan

Ms Philippa Durrant
Cr Rebecca McNeil
His Worship the Mayor, Andy Watson

In attendance:

Ms Denise Servante, Strategy & Community Planning Manager
Ms Laura Richards, Governance Administrator

1 Welcome

The Chair welcomed everyone to the meeting.

2 Opportunity for applicants to address the Committee

Rex Bond - Rhythm of the Rangitikei Volume 1

Mr Bond spoke to the Committee about the many musical artists, composers and singers – singular and groups, he met throughout the district interested in being a part of the creation of a compilation CD. This project would allow 25 individuals or groups an opportunity to take part in a professional production. Funding for the project would allow, for some, a once in a lifetime opportunity. A wide variety of participants would be involved as composer, musicians and even ukulele groups producing a range of music such as folk, rock and roll, etc.

Mr Bond had amended his application following discussion with Ms Duncan and Creative New Zealand to include only the pre-production preparation and design of the CD cover. Funding requested during this round was \$3,860 to be used as seed money for an application to Creative New Zealand for the remaining project costs. Ms Duncan had received advice that this preparatory work would strengthen his chance of success.

Committee asked specifically about the ownership intellectual property which remains with the artists. And royalties which would be directed to the artists thanks to technology which embeds codes into the tracks and paid by how many times a recording is played on any platform.

Tam Hiscotte – The Marton School Art Club

Ms Hiscotte spoke to the Committee about the late application. She apologised that the application had been submitted late and recognised that this put the Committee in a difficult position, given that she is a member of the Committee. She explained that even as a member of the Committee she had not been aware of the final deadline and had been given misinformation when she sought confirmation of the closing deadline. Had this misinformation not been given, she could have submitted an intention to apply and supplied full information during the assessment process.

Ms Hiscotte described further extenuating and extraordinary circumstances; that the project had not been able to confirm the artist's availability (and therefore the viability of the project) until after the funding round had closed and yet could not wait until the next round of the funding scheme because the project required some work to be undertaken during the summer months to ensure success.

She said Marton School Reunion Committee expects over 1,000 people to attend and it wants the school and grounds to be inviting to visitors. The idea is to create three murals with artist Julie Oliver taking the lead and students being involved with her as the mentor. The application is specifically to cover workshops on weekends where the entire community will be invited to participate. A paint company has donated paint, rollers and brushes.

Ms Hiscotte left the meeting 10.43 am.

The Committee discussed whether to accept the application for consideration. It acknowledged that the project is high quality and that the application is fully developed and ready to be delivered. It also accepted that extraordinary circumstances leading to its late submission. The Committee felt that if Ms Hiscotte had not been a member of the Committee there would be no hesitation to consider this project in this funding round. The Committee felt that the project should not be disadvantaged because Ms Hiscotte is a Committee member.

Resolved minute number **15/CNZ/041** **File Ref**

That the Creative Communities Assessment Committee application from The Marton School Art Club be accepted for consideration due to extraordinary and extenuating circumstances.

Ms Benton/Ms Duncan. Carried.

Ms Hiscotte returned at 10.45 am.

3 Apologies

That the apologies for absence from Ms K Hina, Ms P Bradley and Ms J Bainger be received.
Cr McNeil / HWTM. Carried.

4 Confirmation of minutes

Recommendation

That the Minutes of the Creative NZ Funding assessment Committee meeting held on 27 May 2015 be taken as read and verified as an accurate and correct record of the meeting.

HWTM/Ms G Duncan Carried.

5 Creative Communities Application November 2015

The Committee noted administrative issues with the timely and accurate circulation of information for this Committee meeting, although it was recognised that the early circulation of applications and the nomination of Committee members to support applicants had been helpful.

It was agreed that:

- Committee members would be alerted by email when funding rounds opened
- Committee members would be provided with the application forms as they came in and individual members nominated to support applicants
- That staff would do eligibility checks and seek further information to ensure only eligible and complete applications were considered by the Committee
- That full applications (including supporting documentation) would be circulated as part of the order paper

The Committee discussed the various applications to this funding round and allocated the funding available.

Ms Durrant spoke to the Birds on Signs project. She noted many people in Taihape are already talking about it in glowing terms. One of the beauties of the project is that as a bonus school children are learning about birds.

The idea of the pop-up display was discussed and seen as a great idea as was the idea of having a permanent location. This was felt as a way to keep the initiative going which was also seen as important to the community.

The Committee liked the idea of birds in shop frontages and the idea that the old Post Office being considered. However, the idea that a company would charge for viewing space was seen as being ungenerous. The Committee noted that they were unable to fund 'miscellaneous' categories but travel was inserted.

Ms Hiscotte declared a conflict of interest regarding the application from Marton School Art Club, did not participate in that particular discussion and did not vote on that application.

Resolved minute number **15/CNZ/042** **File Ref** **3-GF-3**

- 1 That the report 'Creative Communities Applications November 2015 be received.
- 2 That the Creative New Zealand Funding Assessment Committee approve the applications, listed below, on behalf of the Creative Community Scheme (Creative New Zealand), and disburse the funds to successful applicants:
 - Taihape Community Development Trust \$225
 - Rex Bond – Rhythm of the Rangitikei Vol.1 \$3000
 - Birds on Signs Project \$3000
 - Creative Critters \$350
 - Marton School Art Club \$2200
- 3 That the following Creative Communities Project Report Form be received from:
 - Birds on Signs Project – Etain McDonnell.

Ms Durrant / Cr McNeil. Carried.

Resolved minute number **15/CNZ/043** **File Ref** **3-GF-3**

- 1 That consideration of the following Creative Communities Report forms be deferred for consideration at the next meeting:
 - Facilitator for Creative Workshops - Taihape Community Development Trust
 - Quilted Gumboot Taihape - Pauline Baddeley
 - Wear-A-Bull Arts - Bulls and District Community Trust

- **HIG10 - Highland Dancing Association of Manawatu/Rangitikei/Wanganui**

2 That, in the meantime, Council staff are requested to seek further information from the Bulls and District Community Trust and Highland Dancing Association of Manawatu/Rangitikei/Wanganui to ensure eligibility criteria have been met, and that any remaining funds are returned to be available to the Committee to disperse in the next funding round.

Ms Benton / Ms Hiscotte. Carried.

6 Next Meeting

The next meeting will take place on 27 April 2016, 10.00 am

7 Meeting Closed

The meeting closed at 12.05 pm.

Confirmed/Chair: _____

Date:

ATTACHMENT 2



Rangitikei
UNAPOLOGICALLY...

REPORT

SUBJECT: Creative Communities Applications April 2016

TO: Creative Communities Assessment Committee

FROM: Denise Servante, Strategy and Community Planning Manager

DATE: 20 April 2016

FILE: 3-GF-3

1 Executive Summary

- 1.1 The Creative Communities Scheme is a relationship between Creative New Zealand and local authorities, and supports opportunities for New Zealanders to participate in the arts in their local area. Each local authority has an assessment panel representative of its community, and these panels make the funding decisions.
- 1.2 This report outlines the Creative Communities (Creative New Zealand) Funding Scheme, and presents the applications received for this funding round for the Funding Assessment Committee to consider.
- 1.3 Seven eligible applicants request a total of \$16,811.31 which is \$8,818.15 more than the total sum available for the round. Five applications are from community groups, one application is from an organising committee and one application is from an individual.

2 Background

- 2.1 The purpose of the Creative Communities Scheme is to increase participation in the arts at the local level and to increase the range and diversity of arts available to communities. Creative New Zealand sets criteria for funding which are listed later in this report.
- 2.2 In 2005, the Council agreed to delegate the identification of local priorities for the Scheme to the Funding Assessment Committee. The local priorities were reviewed and confirmed by the committee at its meeting in September 2013.
- 2.3 Creative New Zealand require all territorial authorities participating in the Creative Communities scheme to hold a minimum of two and a maximum of four funding rounds each year. Rangitikei District Council holds two funding rounds per annum. This is the second application round for the 2015/16 year.

2.4 The availability of these grants was advertised in local newspapers in February 2016 (in the District Monitor, Central District Times and Wanganui Chronicle) and was notified on the Council's website.

3 Application process and criteria

3.1 Appendix 1 contains the application form and information sheets provided to prospective applicants. It outlines who is eligible to apply, the characteristics of an eligible project, and the funding criteria.

3.2 The Scheme has three criteria for assessing applications and allocating funding. Projects should meet at least one of these criteria:

- **Broad Community involvement:** The project will create opportunities for local communities to engage with and participate in the arts.
- **Diversity:** the project will support the diverse arts and cultural traditions of local communities, enriching and promoting their uniqueness and cultural diversity.
- **Young people:** the project will enable and encourage young people (under 18 years) to engage with and actively participate in the arts.

3.3 Creative New Zealand states in its Administrators Guide that *"...one of the greatest strengths of the Creative Communities Scheme is that these funding criteria are broad and flexible, allowing assessment committees to make decision that take into account the local context. Committees are encouraged to apply the funding criteria according to the community arts needs within their own local council's area"*.

3.4 Activities that may be funded include:

- Exhibitions, concerts and workshops
- Personnel costs for one-off, short-term projects and material costs
- Artist development
- Arts promotion
- Community participation and engagement
- Support for the arts of ethnic communities
- Projects focussing on young people
- Projects linked to other sectors –arts projects linked to other sectors such as health, heritage or environment, provided that the project's main focus is to achieve arts outcomes.

3.5 The local priorities agreed by the Committee in the 2013/16 triennium are:

- Projects that demonstrate growth
- Projects that demonstrate quality and excellence
- Projects that promote partnership and inclusion

- 3.6 The application form provided by Creative New Zealand has a space on the front cover to list the local priorities but does not have a specific place within the application for the applicant to rank their application against the local criteria.
- 3.7 The annual amount available to Rangitikei District from Creative New Zealand is \$15,850. The Committee allocated \$8,775 at the first round in November 2015. In addition, \$918.16 was returned by Bulls and District Community Trust for the project approved in 2014/15 (see project reports forms below). There is therefore \$7,993.16 available for this funding round.

4 Project Report Forms

4.1 Project report forms are required from all successful applicants within two months of the completion of the project and certainly before further grants can be awarded. Project Report Forms for the 2014/15 funding round have been received from:

- Bulls and District Community Trust (costs as outlined in the quote from Party Up Ltd, excluding 1L carafe's and 350mL wine glasses. Printing costs as outlined in the quote from Wickliffe NZ Ltd. Design work as outlined in the quote from Black Sheep Design Ltd.)
- Highland Dancing Assn Manawatu/Rangitikei/Wanganui (funding cannot be used for the following costs: Competition registration, prize money, judges fees, sashes & rosettes, medals & trophies)
- Marton and District Pipe Band (cost of tutoring lessons for learners and current members of the Pipe Band. The Creative Communities Scheme committee has asked that for future applications to the Scheme, the organisation considers opening up tutoring to non-band members to try and encourage community participation or consider holding open workshop sessions)
- Marton Country Music Festival (towards the cost of hiring equipment for the Festival from Party Up Ltd, in line with the quote provided in the application)
- Pauline Baddeley (costs of materials for memorial to mark the WW1 anniversary)
- Rangitikei Country Quilters (venue hire for the Quilt Show)
- Taihape Community Development Trust (costs of staging workshops to encourage participation in 'Gumboot Day' events)
- Turakina Caledonian Society (costs associated with hiring equipment for the Games, in line with the quote from Party Up Ltd)

4.2 Project Report Forms for the 2015/16 funding round have been received from:

- Taihape Community Development Trust (facilitator for creative workshops for Gumboot Day 2016)

4.3 These are attached as Appendix 2.

4.4 Reminder letters have been sent to the following organisations since project report forms are outstanding from the year 2012/13:

- Taihape Area School (costs of sculpture workshops)
- Mark Watson (art workshops)

4.5 And for the year 2014/15:

- Marton Arts & Crafts Centre (costs of re-printing the 'Arts Brochure')
- Rangitikei Tourism (Photography competition)
- Project Marton (Marton Harvest Festival 2014/15)
- Taihape Community Development Trust (costs to purchase boards, paint and containers for the Taihape Grandstand Mural project)

5 Applications received

5.1 Seven applications have been received to meet the closing deadline for this funding round. The application from James Cook School was received via the Mayor's Office and logged after the closing date. However, the Mayor had been liaising with the school over the application and there had been confusion over where to submit the application and the support that could be offered through the Mayor's Office. It was received on Tuesday 12 April (the closing deadline was Friday 8 April). The Committee will need to decide whether or not to consider this late application.

5.2 The applications are attached separately and summarised in the spreadsheet ([Appendix 3](#)). This shows how each application relates to the criteria. The amount requested by the seven applicants totals \$16,811.31.

5.3 There are three applicants who are new to the scheme. The other two applicants received various grants in the past. Project reports have been received for all of these applications.

5.4 All applications bar one are complete. Some quotes are still outstanding from the Samoan Community Support Committee. The eligible expenditure to date is \$1,401.59. If received in time, supplementary supporting quotes will be tabled to the meeting.

5.5 Two applications are above the \$2,500 normal limit set by Creative New Zealand. These are for the Marton Country Music Festival and James Cook School. Creative New Zealand requires applications at this level to be highly developed with clearly defined budgets and event planning, and to be of widespread benefit. Both applications contain detailed budgets; the application from Marton Country Music Festival contains costs that cannot be covered by the Scheme. The Committee may like to pick specific costs from this application to fund. The Committee will need to decide on the merit of the application from James Cook School whether it may be willing to fund above the \$2,500 suggested limit.

6 Assessing applications

- 6.1 All New Zealanders are eligible to apply to the Creative Communities Scheme (Creative New Zealand), either as individuals or groups. In principle, the Creative Communities Scheme offers support for *projects* rather than support for *individuals*. All applications are assessed according to the merit of the project based on the Creative Communities Scheme criteria and to be considered all applications must identify the benefits of the proposed project to the local community.
- 6.2 A marking sheet has been circulated to all Committee members in advance of the meeting. These should be completed by Committee members prior to the meeting in April 2016. The assessment sheet is by no means binding: on several occasions, committee members change their mind about an application as the process goes forward. However, it can be useful to highlight where there is clear consensus amongst committee members about a particular application.
- 6.3 Creative New Zealand advises that “It is preferable to adequately support the best applications to ensure that they have a good chance of success”.
- 6.4 Given that the amount sought exceeds the amount available, the Committee might wish to consider a priority ranking approach in order to satisfy the scheme’s overriding requirement; to fund for success. This could include the timing of the projects and the timing of future funding rounds.

7 Recommendations

- 7.1 That the report ‘Creative Communities Applications April 2016’ be received.
- 7.2 That the Creative New Zealand Funding Assessment Committee agrees/does not agree [delete one] to consider the late application from the James Cook School.
- 7.3 That the Creative New Zealand Funding Assessment Committee approve/decline the applications, listed below, on behalf of the Creative Community Scheme (Creative New Zealand), and disburse the funds to successful applicants:

- Bulls and District Community Trust: Wear-a-bull Arts 2016 \$
- James Cook School: Mural to be completed by the School Art Club and community artists \$
- Marton and District Pipe Band: Tuition and tutorial fees \$
- Marton Country Music Festival: Staging the event in January 2017 \$
- Marton Players Inc: Putting on two one act plays during July \$
- Samoan Community Support Committee: Performances as part of a celebration of Samoan Independence Day \$
- Virginia Warbrick: TAH180 – the hole in the ground \$

7.4 That the following Creative Communities Project Report Forms be received:

- Taihape Community Development Trust (costs of staging workshops to encourage participation in 'Gumboot Day' events)
- Pauline Baddeley (costs of materials for memorial to mark the WW1 anniversary)
- Bulls and District Community Trust (costs as outlined in the quote from Party Up Ltd, excluding 1L carafe's and 350mL wine glasses. Printing costs as outlined in the quote from Wickliffe NZ Ltd. Design work as outlined in the quote from Black Sheep Design Ltd.).
- Highland Dancing Assn Manawatu/Rangitikei/Wanganui (funding cannot be used for the following costs: Competition registration, prize money, judges fees, sashes & rosettes, medals & trophies)
- Marton Country Music Festival (towards the cost of hiring equipment for the Festival from Party Up Ltd, in line with the quote provided in the application)
- Marton and District Pipe Band (cost of tutoring lessons for learners and current members of the Pipe Band. The Creative Communities Scheme committee has asked that for future applications to the Scheme, the organisation considers opening up tutoring to non-band members to try and encourage community participation or consider holding open workshop sessions)
- Turakina Caledonian Society (costs associated with hiring equipment for the Games, in line with the quote from Party Up Ltd)
- Rangitikei Country Quilters (venue hire for the Quilt Show)
- Taihape Community Development Trust (facilitator for creative workshops for Gumboot Day 2016)

Denise Servante
Strategy and Community Planning Manager

APPENDIX 1

Rangitikei District



Creative Communities Scheme (CCS) Application Form

Funding for local arts

Ngā kaupapa auaha a te iwi whānui

Te tono pūtea mō ngā manahau a te iwi kāinga

This funding round closes on **Friday 8 April 2016 at 12 noon.**

Projects have to start after **1 May 2016.**

Local funding priorities: In 2015/16 priority will be given to **projects that demonstrate growth, quality and excellence, and promote partnership and inclusion.**

Read the *Creative Communities Scheme (CCS) Application Guide*

This guide tells you—

- > if you are able to apply for a CCS Grant for your project
- > what information you will need to include in your application
- > how to submit your application.

You can print this document out and handwrite your application or you may like to save a copy of this application to your desktop and enter the information this way. If you need more space attach information to the back of this application form. Please include the section number and heading for easy assessing.

Contact the CCS administrator if you need advice on your application.

Denise Servante

denise.servante@rangitikei.govt.nz or (06) 327 0099

1 Applicant details

Are you applying as an individual or group?

Individual Group

Full name of applicant

Contact person (for a group)

Daytime phone number

Postal address

All correspondence will be sent to this address.

Street/PO Box

Suburb

Postcode

City

Email

Ethnicity of applicant

Please tick and provide detail e.g. Ethnicity: Pacific Island, Detail: Samoan.

Ethnicity	Detail
-----------	--------

NZ European

Māori

Pacific Island

Asian

Middle Eastern/Latin American/African

Other

Funding criteria

Which of the scheme's three funding criteria are you applying under. Please select one. If your project meets more than one criteria, choose the one that is the project's main focus.

▲ *You can find examples of each criteria in the CCS Application Guide page 10*

- Participation:** Create opportunities for local communities to engage with, and participate in local arts activities.
- Diversity:** Support the diverse arts and creative cultural traditions of local communities.
- Young people:** Enable young people (under 18 years) to engage with, and participate in the arts.

If you do not know which of the three fits your project, contact your CCS administrator.

3 The idea/He aha te kaupapa

▲ *See the CCS Application Guide on page 2*

What do you want to do?

4 The benefit/He aha ngā hua

▲ See *CCS Application Guide page 3*

How will your project benefit your community?

5 The process/Pehea te whakatutuki

▲ See *CCS Application Guide page 3*

Where, when and how will the project happen?

Venue/location:

Project start and finish dates:

Details of how the project will happen:

6 The people/Ko wai ngā tāngata

▲ See CCS Application Guide page 5

Tell us about the key people and/or community involved

Estimated number of active participants

Estimated number of attendees

7 The budget/He pūtea

How much will it cost?

Are you GST registered? Yes No

GST number | |

If you are GST registered, do not include GST in these amounts.

If you are *not* GST registered, please provide the amounts including GST.

This budget includes GST This budget does not include GST

Project costs

Write down *all* the costs of your project and include the details.

For example materials, venue hire, promotion, equipment hire, artist fees and personnel costs.

▲ See CCS Application Guide page 6

Item	Detail	Amount
<i>e.g. Hall hire</i>	<i>e.g. 3 days hire at \$100.00 per day</i>	<i>e.g. \$300.00</i>
		\$
		\$
		\$
		\$
		\$
		\$
		\$
		\$
		\$
		\$
		\$
		\$
		\$
		\$
		\$
		\$
		\$
		\$
		\$
		\$
A: Total cost		\$

Project income

Write down *all* the income you will get for your project from ticket sales, sale of artwork, other grants, donations, your own funds, other fundraising. Do not include the amount you will be requesting from CCS.

Item	Detail	Amount
<i>e.g. Ticket sales</i>	<i>e.g. 250 tickets at \$15.00 per ticket</i>	<i>e.g. \$3,750.00</i>
		\$
		\$
		\$
		\$
		\$
		\$
		\$
		\$
		\$
		\$
		\$
		\$
		\$
		\$
		\$
		\$
		\$
		\$
B: Total income		\$

Calculate your requests from CCS using this table.

A: Total cost of project	\$
B: Less total income	\$
C: Difference	\$
D: Amount requested from CCS	\$

Financial background

Tell us about any other funding you have applied for or received for this project (including funds from Creative New Zealand's other funding programmes).

Date applied	Source of funding	Type of funding e.g. grant	Date of result	Amount
				\$
				\$
				\$
				\$
				\$

Tell us about other grants you have received through CCS in the past three years.

Date	Project title	Have you submitted a project completion report for this project?	Amount
			\$
			\$
			\$
			\$
			\$

Groups or organisations must provide a copy of their latest financial statement.

This can be a copy of the audited accounts, an income and expenditure statement or a copy of the unaudited management accounts.

If your group or organisation has reserves which are not being used for this project you should include your reserves statement or policy.

8 Artform, activity and cultural tradition

Which of the following artforms best describes your project?

Please select one. If your project combines more than one artform select combined arts.

▲ *See CCS Application Guide page 6 for definitions of each artform*

- | | |
|---|---------------------------------------|
| <input type="checkbox"/> Combined arts | <input type="checkbox"/> Māori arts |
| <input type="checkbox"/> Craft/Object art | <input type="checkbox"/> Music |
| <input type="checkbox"/> Dance | <input type="checkbox"/> Pacific arts |
| <input type="checkbox"/> Film | <input type="checkbox"/> Theatre |
| <input type="checkbox"/> Literature | <input type="checkbox"/> Visual arts |

Which of the following activities best describes your project?

Please select one.

▲ *See CCS Application Guide page 8 for definitions*

- Creation only
- Creation and presentation
- Presentation only (performance or concert)
- Presentation only (exhibition)
- Workshop

What is the cultural tradition of your project?

The cultural tradition of your project relates to the particular heritage that your project is part of. Cultural tradition **does not relate** to your group's ethnic affiliations or geographical origins.

Select the cultural tradition that best relates to your project and give additional information if needed.

For example, a kapa haka performance would be categorised as Māori arts or a traditional Polish dancing workshop would be Cultural tradition: European, Detail: Polish.

Cultural tradition	Detail
<input type="checkbox"/> European	
<input type="checkbox"/> Māori arts	
<input type="checkbox"/> Pacific arts	
<input type="checkbox"/> Asian	
<input type="checkbox"/> Middle Eastern/Latin American/African	
<input type="checkbox"/> Other	

9 Declaration

I/We understand that if this application is successful I/we cannot receive funds for the same project from Creative New Zealand's other funding programmes.

I/We declare that the details contained in this application are correct and that I/we have authority to commit to the following conditions.

If this application is successful, I/we agree to:

- > complete the project as outlined in this application
- > complete the project within a year of the funding being approved
- > complete and return a project report form (this will be sent with the grant approval letter) within two months after the project is completed
- > return any unspent funds

- > participate in any funding audit of my organisation or project conducted by the local council if required
- > contact the CCS administrator to let them know of any public event or presentation that is funded by the scheme
- > acknowledge CCS funding at event openings, presentations or performances
- > use the CCS logo in all publicity (e.g. poster, flyers, e-newsletters) for the project and follow the guidelines for use of the logo. Logo and guidelines can be downloaded from www.creativenz.govt.nz/logo.

I understand that the Rangitikei District Council

- > is bound by the Local Government Official Information and Meetings Act 1987
- > I/we also consent to it recording the personal contact details provided in this application, retaining and using these details, and disclosing them to Creative New Zealand for the purpose of evaluating the Creative Communities Scheme
- > I/we understand that my/our name and brief details about the project may be released to the media or appear in publicity material
- > I/we undertake that I/we have obtained the consent of all people involved to provide these details. I/we understand that I/we have the right to have access to this information
- > this consent is given in accordance with the Privacy Act 1993.

Name

Signature

Name and signature of parent or guardian if applicant is under 16 years of age:

Name

Signature

Position in organisation if applicable

Date

How did you hear about this fund?

- Council website
- Council mail out
- Council staff member
- Creative New Zealand website
- Local Newspaper
- Poster/flyer
- Radio
- Social media
- Word of mouth
- Other (please give detail):

10 Final check

Make sure you have

- Completed all the sections
- Checked that your budget balances
- Provided quotes and financial details
- Attached supporting documents

Submitting your application

Mail your application to:

Rangitikei District Council: Attn: Denise Servante
Private Bag 1102
Marton 4741

Courier or hand deliver your application to:

Rangitikei District Council: Attn: Denise Servante
46 High Street
Marton 4710

Creative Communities Scheme (CCS) Application Guide

How to fill out the application form

This guide will help you complete the *Creative Communities Scheme (CCS) Application Form*. All parts of the application form need to be completed.

Our CCS brochure *Funding for Local Arts* tells you what we can and cannot fund. If you have not read this brochure read *What CSS can fund* on page 10 of this guide before you complete the form.

If you have more questions please contact your local CCS administrator.

1 Applicant details

Full name of applicant:

This is the name of the group, the organisation or person applying for funding. They will be responsible for the funding if the application is successful.

Contact person:

If you are applying as a group enter the name and contacts details of the person who is responsible for this application.

Address, phone and email:

Your local CCS administrator may need to contact you about your application and will let you know in writing if you have been successful or not.

Ethnicity:

Put an X in the box that best fits your group or you as a person. For example: if you are Samoan, mark the Pacific Island box with an X and then enter Samoan.

2 Project details

Insert your project name and a brief description of the project. Select the funding criteria that is the project's main focus. See page 10 of this guide.

3 The idea/He aha te kaupapa

Describe your project including:

- > what you want to achieve
- > who you will be working with
- > why the funding is needed.

Here is an example of a good project description:

The Otarere Hall Restoration Group want to work with local youth and local, professional, Māori and Pākehā artists to make art works which tell the stories of the Otarere community. The art works will be made by young people with advice from the professional artists.

The Otarere community is isolated. People meet at the school, Te Aroha marae and the pub. The Otarere Hall has been unused for many years but will re-open in December.

Otarere's population is getting smaller each year with families leaving the area. There is little out-of-school activity. This project will give the young people something to do and build their connection with the town and community hall.

The art works will combine traditional European and Māori arts including embroidery, tukutuku, oil painting, whakairo and kōwhaiwhai – symbolising the bi-cultural history of the area. The finished works will be hung in the hall once the restoration is completed in December.

Funding is needed to cover one quarter of the professional artist fees and some materials.

This example describes the overall idea, what the result of the project will be, some of the artistic goals and why the funds are needed.

4 The benefit/He aha ngā hua

Now you need to explain how this project will benefit your community.

Here is an example using the Otarere Hall project:

Young people will:

- > get to work with and learn from local artists
- > learn to express themselves through their art
- > have something constructive to do during the school holidays
- > learn the stories of the local community and their families and be able to pass these stories to other people. This will strengthen their understanding of who they are and where they come from.

The artists will have an opportunity to share their knowledge and to become known in the community. The project will also bring the community together for the opening of the hall.

If your project has happened before you may need to show how the project is growing and developing. For example:

- > Will the activity involve more people this time?
- > How will it encourage new people to take part?
- > What new things are happening?
- > Are there any new partners or groups involved in the project?

5 The process/Pehea te whakatutuki

Where will your project take place?

Name the venue and include the cost for hiring. If you have not confirmed a venue say where you hope your project will take place and a back-up if that venue is not available.

When will your project take place?

Keep in mind the dates your council has set for when projects must start and be completed. These are on the front of the application form. If part of your project has already started, be clear about what you are seeking funding for. For example, your project may be a rehearsal and performance, the rehearsals may have already started but you are seeking support for the cost of the performance. You cannot be supported for activity which has already started.

How will the project happen?

Explain the key stages of your project and how it will be carried out.

Here is an example using the Otarere Hall project:

Where: Otarere Hall, Otarere

When: July – December

How: The art work will be made from July to November and the final work installed in the hall in December. All workshops and making will take place at the hall in the dining area, which is free-of-charge.

Timeline:

- > July school holidays – the young people (supported by the local youth worker and artists) will have a two week workshop at the hall to research the stories of Otarere. This will include interviews, on-line research and sharing stories from their own families. From this they will choose who will work on each art work and what the art work will be about.
- > August/September – the young people will meet weekly with the artists to learn the different traditional art techniques.
- > October school holidays – the young people will work with the artists (and youth worker) to design and make the art work.
- > November – the artists and young people will complete the art works in the evenings and weekends as needed.
- > December – the works will be installed and followed by an opening.

6 The people/Ko wai ngā tāngata

Who are the key people involved in your project?

Include who will be helping you to make the project happen and who your audience or participants will be.

For the project leaders – briefly describe what their role will be and their relevant experience. You can include a brief biography or attach a small CV to the application.

Here is an example using the Otarere Hall project:

There will be at least 20 young people aged 12 to 18 who will be involved in the project. Ten young people have already committed to the project but we expect more to be involved as people hear about it. The project will be open to all high school age young people but they need to make a commitment to the whole project.

Four artists have been selected from the local community. They have experience of teaching and leading community projects. Please see the attached artist biographies and letters of support/commitment from these artists.

The young people will be supported by the local youth worker and parents. The youth worker will coordinate the project with support from the Otarere Hall Restoration Project (please see attached youth worker biography).

A couple of things to consider:

- > Have you made it clear in your application that the people involved have the skills and time to make the project happen?
- > If you are doing a project with another organisation or group is it clear in your application who is responsible for what?

Estimated number of active participants:

Write down the number you expect to participate in the project activity. For example, if you were running three workshops and expect 15 people to come to each workshop the number is 45.

Estimated number of attendees:

For example, a play by a local theatre group at a theatre with 100 seats might get an audience of 80.

If your funding application is successful you will need to give the actual number of participants and audience members in your project completion report.

7 The budget: He pūtea

See page 12 for what costs you can and cannot apply for.

Project costs:

Enter **all** the costs for your project. Provide detail so the assessors can understand how you have calculated your costs.

For example:

Artist fees: 60 hours @ \$40/hour x 4 artists = \$9,600

Materials: 2 x 10mm plywood sheets @ \$50 each = \$100

Venue hire: 3 days preparation time @ \$100/day and 6 days performance @ \$200/day = \$1,500

You should attach detailed quotes for important items. This will help the assessors understand your budget.

If you have costs that can't be covered by CCS (for example, catering) you should still include these costs in your budget. However you will need to have enough income from sources other than CCS to cover these costs.

Project income:

Enter all the income for your project. Be realistic about what income you can get.

If you include the value of a discount as part of your income you will need to show the full cost (before the discount) of the item in your project costs.

8 Artform, activity and cultural traditions

Definitions of artforms

Combined arts:

Includes activities and events that combine or feature two or more art forms. Examples are a project that combines music and visual arts or a festival that features performances and workshops in a range of different art forms.

Craft/Object art:

Includes traditional and contemporary practices, for example ceramics, glass, jewellery, pottery, lace-making, embroidery, rāranga, taniko, tapa making, textiles, tivaevae, typography, weaving, woodwork and metalwork.

Dance:

Includes forms of dance that clearly have an arts and cultural focus rather than aerobics or fitness. Examples include ballet, tap, jazz, tango, traditional highland dancing, hiphop, classical Indian dance, Pacific dance and Khmer dance.

Film:

Includes animation, dance film, documentary film, experimental film, feature film, short film, and moving-image art projects.

Literature:

Includes activities that relate to the creation, presentation and/or appreciation of all literary genres, for example, poetry readings, poetry slams, local storytelling, writers' and readers' events, creative writing workshops.

Māori arts:

Arts activities that can be regarded as strong expressions of Māori identity. They include the following types of arts practice, which can also form the focus of workshops, wānanga and festivals –

- > heritage te reo-based artforms, such as whaikōrero, haka, karanga and whakapapa recitation, waiata mōteatea, pao and kōrero paki
- > heritage material artforms, such as toi whakairo (carving), tukutuku (wall decoration), kōwhaiwhai (painted rafters), ngā mahi a te whare pora (weaving, textiles, basketry)
- > contemporary Māori arts activities that draw on traditional heritage artforms, fusing them with other elements and media to create innovative expressions of Māori cultural identity. Examples include theatre and contemporary dance productions, creative writing, songwriting, and photography.

Music:

Includes making music and performing music in all genres, such as traditional folk music, popular and rock music, instrumental, vocal, choral and orchestral music, and brass and pipe band music.

Pacific arts:

Arts activities that identify with the unique cultural perspectives of New Zealand's Pasifika communities, such as Samoan, Cook Island, Fijian, Tongan, Niuean, Tokelauan and Tuvaluan. Pacific arts activities can include the following types of arts practice, which can also form the focus of workshops, fono and festivals –

- > heritage language-based artforms that relate to specific cultural traditions, such as storytelling, chanting and oral history
- > heritage material artforms, such as woodcarving, weaving, tivaevae and tapa-making
- > contemporary Pacific arts activities that draw on traditional heritage artforms, fusing them with other elements and media to create innovative expressions of Pasifika cultural identities. Examples include theatre and contemporary dance productions, music, creative writing, songwriting and photography.

Theatre:

Includes pantomime, physical theatre, staged productions, clowning, traditional theatre, circus, puppetry, mask and other theatre forms.

Visual arts:

Can include drawing, painting, installation, kōwhaiwhai, photography, printmaking, sculpture, tā moko and typography.

Definitions of activity types

Creation only:

For projects which focus on making an artwork but not performing or exhibiting in public. For example, a community weaving group, focusing on weaving, dyeing, textile weaving and up-cycling. Funding wanted for materials and venue costs.

Creation and presentation:

For projects which include both the creating and performing or exhibiting to the public. For example local youth crafting and painting life-size figures of the World Cup Teams to exhibit at the gateway of their town.

Presentation only – for public exhibitions or performances:

For example exhibition of work by a local water colour group or presenting a touring theatre work.

Workshop:

Any form of training. For example a wānanga in rāranga or a programme of contemporary dance workshops.

9 Supporting material

It is useful to attach support material. It should be brief and may include:

- > examples of previous work undertaken by the individual or group, such as images, text or links to websites
- > letters of support and invitations – these should be from key people within your community who can speak about the benefits of the project or the skills of the people involved in the project, or confirm that an invitation has been issued.

Make sure you send **copies only** as they may not be returned.

Keep a copy of your original application. If you do receive a grant, your original application will be useful for filling out your completion report.

Other sources of funding:

If your project has regional or national impacts and/or is at the leading edge of a particular art form you may wish to consider applying to one of Creative New Zealand's other funding programmes. See www.creativenz.govt.nz/en/getting-funded for more information.

The Creative New Zealand website has a list of other funding options including crowd funding www.creativenz.govt.nz/en/getting-funded/other-sources-of-funding

Fundview is an online search engine where you can find funding opportunities and resources for communities. Contact your local library or council to see if they provide access to this service. www.fis.org.nz/products/fund-view/

The Ministry of Culture and Heritage also has a search engine for possible funders www.mch.govt.nz/funding-nz-culture/search-funding for other possible funders.

What CCS can fund

Can I get funding for my project?

To get funding through CCS your arts project **must do** at least one of the following:

Participation: Create opportunities for local communities to engage with, and participate in local arts activities. For example:

- > performances by community choirs, hip-hop groups, theatre companies or poets
- > workshops on printmaking, writing, dancing and other creative forms
- > exhibitions by local craft groups promoting weaving, pottery and carving
- > festivals featuring local artists
- > creation of a community film or a public artwork by a community
- > development of new tukutuku, whakairo or kōwhaiwhai for a local marae
- > artist residencies involving local artists or communities
- > seminars for local artist development.

Diversity: Support the diverse artistic cultural traditions of local communities. For example:

- > workshops, rehearsals, performances, festivals or exhibitions in Māori or Pasifika heritage or contemporary art forms
- > workshops, rehearsals, performances, festivals or exhibitions by local migrant communities
- > arts projects bringing together groups from a range of different communities
- > workshops, rehearsals, performances, festivals or exhibitions by groups with experience of disability or mental illness.

Young people: Enable young people (under 18 years) to engage with, and participate in the arts. For example:

- > a group of young people working with an artist to create a mural or street art
- > a group of young people creating a film about an issue that is important to them
- > printing a collection of writing by young people
- > music workshops for young people
- > an exhibition of visual art work by young people.

Your project must also:

- > take place within the city or district where the application is made
- > be completed within 12 months of funding being approved
- > benefit local communities
- > not have started or finished before CCS funding is approved
- > not have already been funded through Creative New Zealand's other arts funding programmes.

What types of projects can't get CCS funding?

- > Fundraising activities.
- > Developing galleries, marae, theatres or other venues or facilities (however new artworks as part of marae projects eg tukutuku, whakairo, whāriki and kōwhaiwhai are eligible. Marae facilities or restoration projects should be referred to the Lottery's Marae Heritage and Facilities Fund).
- > Local council projects.
- > Projects which are mainly focused around other areas e.g. health, education or the environment and that only have a very small arts component.
- > Arts projects in schools or other education institutions that are the core business of that institution or that are normally funded through curriculum or operating budgets.

Who can apply?

- > You must be an individual or group. Individuals must be New Zealand citizens or permanent residents.
- > If you have already received funding from CCS for a project, you must complete a report on that project before make another application, unless the project is still in progress.
- > If this project has already received funding from one of Creative New Zealand's other funding programmes you will not be able to also receive CCS funding for the same project.

What costs can I get support for?

- > Materials for arts activities or programmes.
- > Venue or equipment hire.
- > Personnel and administrative costs for short-term projects.
- > Promotion and publicity of arts activities.

What costs cannot be supported?

- > Ongoing administration or personnel costs that are *not* related to the specific project.
- > Costs for projects already started or completed.
- > Travel costs to attend performances or exhibitions in other areas.
- > Any food or refreshment costs.
- > Buying equipment, such as computers, cameras, musical instruments, costumes, lights or uniforms.
- > Entry fees for competitions, contests and exams.
- > Prize money, awards and judges' fees for competitions.
- > Royalties.
- > Buying artworks for collections.
- > Debt or interest on debt.

How much can I apply for?

There is no limit to how much you can apply for, but most CCS grants tend to be under \$2,000. Look at previously funded projects on your council website (or speak to your local CCS administrator) to get an idea of what sort of projects have been supported in the past and the average amount granted.

How often can I apply and how are decisions made?

Each area will run up to four funding rounds per year. Your application will go to an assessment committee of people from your area. They are appointed for their knowledge and experience of the arts and local communities.

Glossary

Arts:

All forms of creative and interpretative expression (from the Arts Council of New Zealand Toi Aotearoa Act 2014).

Artform:

One of various forms of arts practice.

Community:

A community may be based around a place, a cultural tradition, or commonly held interests or experiences.

Genre:

A category of artistic, musical or literary composition characterised by a particular style, form or content; a kind or type of work.

Heritage arts:

Artistic expressions and forms reflecting a particular cultural tradition or traditions that continue to be celebrated and practised by New Zealand artists and practitioners, and that are appreciated and supported by New Zealand communities.

Masterclasses:

Classes, workshops, seminars or other training offered by experienced and respected artists and practitioners (see also Wānanga).

Territorial authority:

A district or city council.

Wānanga:

A Māori term for a forum or workshop.

APPENDIX 2

TABLED DOCUMENT

Tabled at Creative Communities

On 25 November 2015

RECEIVED

05 OCT 2015

To: PS
File: 3-GF-3-3
Doc: 15 0374

Creative Communities Scheme
Project completion Report form

Rangitikei District



Rangitikei
Year after...

Return money?

All recipients of funds from the Creative Communities Scheme must complete this form within two months after their project is completed.

If you do not complete and return this form you will not be eligible for future funding through this scheme.

Please return the completed form to –

Rangitikei District Council
Attn: Samantha Whitcombe
Private Bag 1002
Marton
4741

1. Project title/grant number	Wearabull Arts Awards
2. Name of applicant	Bulls & District Community Trust
3. Name & location of	Bulls Wearable Arts Town Hall
4. Date of Project	29 th August 2015
5. Amount received from the Creative Communities scheme	\$ 1900,00 + GST

6. Please give details of how the money was spent. Please account for both the Creative Communities Scheme funding and your own financial contribution to the project.

Project Costs

Item	Detail	Amount
e.g Hall Hire	e.g 3 days hire at \$100.00 per day	e.g \$300.00
Hall Hire	RRC 1 Day	\$ 109.60
Per Licence		\$ 70.00
Sound & lighting	- foulding foulding	\$ 1750 + plus 65
Hire of	Party Up	\$ 780.61
Advertising	District Monitor	\$ 360.00
Corporate	Food/ Wine	\$ 690.53
Photographs	Tania Wadcock	\$ 200.-
Printing	Wickiffe	\$ 161.83
		\$
		\$
		\$
		\$
A : Total Cost		\$ 4013.51

CC
CC

return money

Project Income

Item	Detail	Amount
e.g Ticket Sales	e.g 250 tickets at \$15 per ticket	e.g \$3750.00
Ticket Sales		\$ 1430.00
		\$
Corporate/Sponsors		\$ 2400.00
		\$
Entries	Entry Money	\$ 380.00
		\$
Lion Foundation + Funding		\$ 895.27
		\$
Creative Communities		\$ 1900.00 + 85
		\$
		\$
B : Total Income		\$ 7153.27

7. How many people?

- Write down the numbers of people that actively participated
- Write the number of people that attended (such as the audience)

49

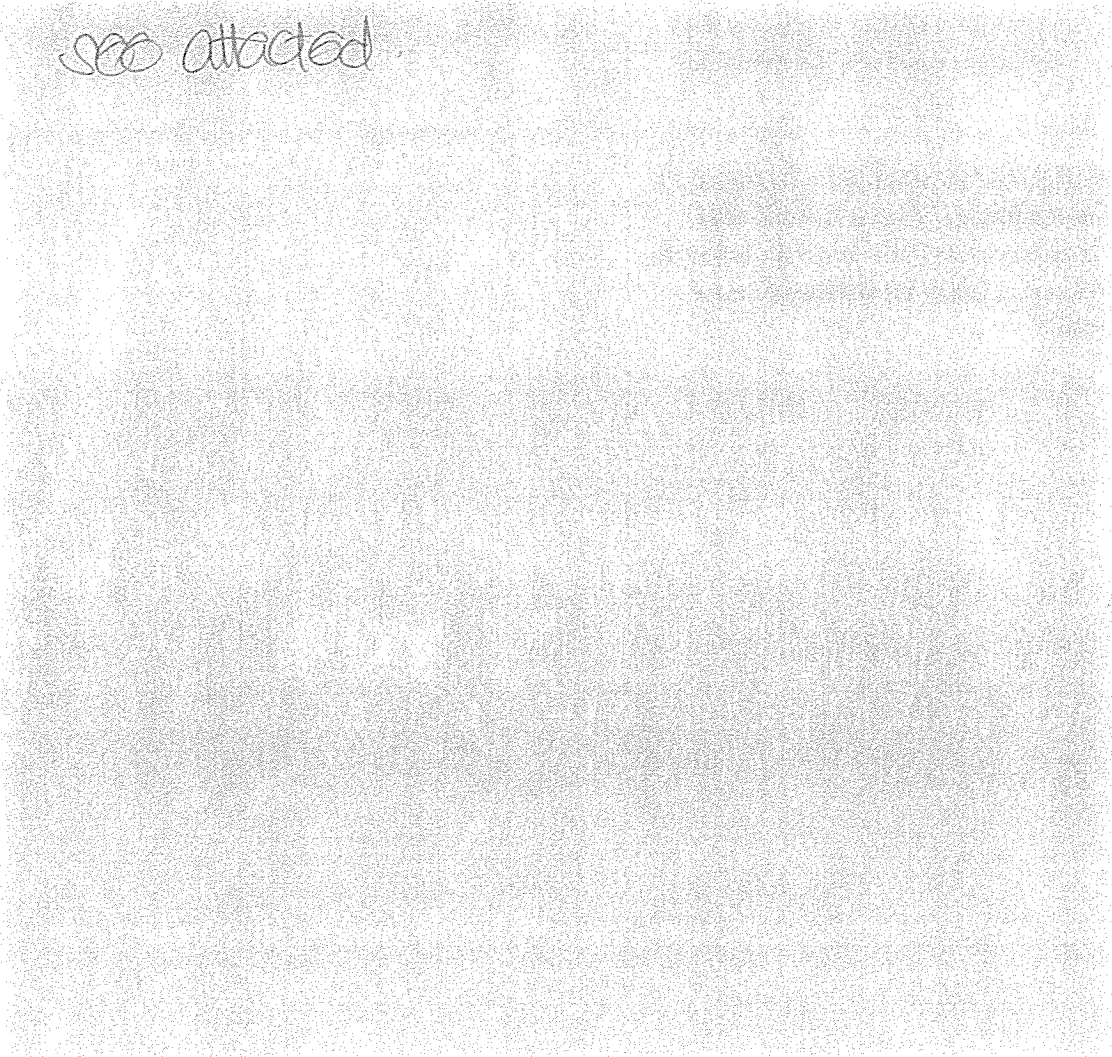
180

8. Highlights: Give a brief description of the highlights of your project. Also describe what didn't work so well and what you might do differently next time?

The visual impact as you walked into the hall set the scene for a fantastic night. We have a large group of volunteers who had not helped previously. Fantastic Judges who judged skillfully ~~took~~. There's times in making decisions, honoring all entrants garments. children's 2 sections

9. How did your project benefit your community?

see attached



This report was completed by:

Jan Harris

Wear-a-bull Arts

This event is designed to help advocate the arts within our community, through either entering or volunteering. It provides a platform for growth for many of the strands that make up our community. Linking all these different groups through entering or volunteering gives our contestants and volunteers a sense of ownership within the community they live in. This year we had new volunteers working alongside each other for the first time, a fabulous result. With an all new and large committee of volunteers we all felt that our event far exceeded expectations. We had an increased number of entrants with a very high standard of design and construction. We had a few of our adult entrants make comment that the bar rises every year.

For competitors, to see the garment they have made up on stage and being valued by the judges and crowd, they get an enormous sense of achievement and pride in their accomplishment. I believe the arts are a great way to bring people together, it's that common bond of, having an idea, developing that idea through different mediums and problem solving. It may look easy but there is an awful lot of trial and error and garments are hours of work. It showcases the talent within our community but also the district on a wider level and encourages positive outcomes for those artists and designers that take part.

This event teaches our volunteers new skills, how to work as a team to promote an event of high standards where competitors and their garments are highly valued. To build a healthy community we need to be able to place our volunteers in roles that suit their skill base so they are comfortable when first starting out at events. As their confidence grows they will learn new skills which will help them in all aspects of their lives. Community volunteers are the life blood of small town like Bulls and often mean the difference in just surviving to exceeding our expectations of what and how special it is to be involved with the community projects. When other residents see how great our volunteers are doing it will make them think, gosh I can do that. Great outcomes all around for our community and growing great role models for our children.

We put the winning entry on our Bulls face book page and it reached over 577 people. We are experiencing a growth overall in social media especially when it honours Bulls residents.

Photos also appeared in our Bull-it-inn and a video will be put up on social media when the editing is finished shortly.

WHAT A BULLS 'WHAT A BULL' ARTS SHOW.

WHAT A BULL ARTS

• Doors open 7:00pm Starts 7:30pm • ADULTS \$18 CHILDREN \$8 • Tickets on sale now from Bulls Information Centre •

Storybook...with a twist



29th
AUGUST

Bulls Town Hall
87 High Street

**WHAT A LOAD OF
BULL**

Our poster artwork was completed by
Marego Bowen, a young Bulls woman
who went to Nga Tawa & is now an
architect living in Wellington but happy
to help her community.

Great news for Rangitikei air passengers

MP Ian McKelvie has welcomed this week's statement that Jetstar will begin to operate flights to Palmerston North.

"This is a big win for the Rangitikei region," he says. "For quite some time now, we've been hoping we would get the nod for more flights, so it's great to know that this is now going to happen."

"More flights to the Rangitikei region will mean more visitors and greater opportunities for the area. Also, it's always beneficial to see good competition in the market place."

Jetstar's additional services from Palmerston North will commence in December.

High standard at Wear-a-Bull Art



Supreme winner was Kristine Hart with Unhappily Never Ever After; in the Story Book section.

Once upon a Twisted Tale by Annie Whitfield. Model: Harriet Whitfield.

Little Lost Girl by Courtney Walker and Br Cockburn (Bulls School).

In the Anything Goes, adult section, first was Laura Atkins with Siren of the Seas; worn by Amy Adams.

This year's Wear-a-Bull Art Supreme Award went to Kristine Hart with Unhappily Never Ever After.

Jan Harris, Bulls Community coordinator and event organiser says, "It was a great night. The standard of entries was extremely high, with the bar being raised again. This was also noted by entrants in the adult section. The two sections for the children saw entries increase to sixteen. How great is that?"

She also praised "fabulous volunteers, who looked amazing on the night and more importantly, did a fabulous job, ensuring the success of this event."

"To the entrants, well done to them all; they all looked amazing. There is a huge amount of work that goes into the costumes and I would like to recognise Julie Rowe, from South Makirikiri School and Leigh Hanson, from Bulls School, who inspired

pupils to get involved.

"It was a fantastic night, a great effort. I can't wait for next year, to see what marvellous creations we have."

The MC was Dereley Barry. Young singer Georgina Fryatt performed two lovely songs and later, Anna Hartley - during the breaks. The judges were Juliette Scully, Nigel Bowen and Squadron Leader Anne Shaw.

In a Mystery Box section, two couples were invited to create a wear-a-bull art costume, in ten minutes, with two items. A very brave Hew Dalrymple won the award, with lots of help from his wife Ceceha, who dressed him in a mankini, using a long roll of toilet paper. Duncan Mitchell and Joanne Hartley gave them a run for their money. See results and photos page 6 and 7.

printing.com @ marton print
Right on Time

UP SALE

All dressed up to enjoy a fairy-tale night out

By Laurel Stowell
laurel.stowell@wanganuichronicle.co.nz

A gingerbread house, studded with lollies and candyfloss took out the supreme award at Bulls Wearabull Art Awards on Saturday night.

Kristine Hart's entry was made of Confite board, covered with lollies made of stuffed fabric and cottonwool candyfloss. Inside the gingerbread house from the Hansel and Gretel fairy tale was a witch in a blood-spattered apron.

Titled *Unhappily Never Ever After*, Mrs Hart's entry was a retelling of the fairy tale — in which both children are cooked by the witch. She said the event was good fun.

"I like creating and getting out and supporting local shows."

The crowd was impressed by her entry's "incredible detail", Bulls community development manager Jan Harris said.

Her prize was tickets to the World of Wearable Arts (WOW) Awards Show in Wellington next month and a gift basket.

Deciding the winner must

have been difficult, Mrs Harris said, because previous winner Laina Atkins' entry, silver and blue and titled *Siren of the Tasman Sea*, was also outstanding.

The awards took place in Bulls Town Hall. There were 26 entries in six categories, four for adults and two for children.

Child winners included Alannah Mullins' entry *White Snow's Apple Fairytale*, and Stella Beaven and Maia McKenna's *Save the Seas*.

The annual event included music and interviews, as well as viewing the clothing creations on a catwalk.

It was the first Mrs Harris had organised. She has been the town's community development manager only since mid-July.

"The hall was set out as a secret garden and it looked exquisite," she said.

She was also pleased to get lots of support.

"For my first time I had lots of amazing helpers that just got in and did it, and were still back here this morning helping clean up," she said.



JUST DESSERTS: Kristine Hart's entry, modelled by Kim Madsen (centre) was the supreme winner in Bulls Wearabull Art Awards. Mrs Hart is at right. PHOTO/TANA WARRICK

19 SEPTEMBER 2015

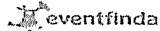
THE MUDDER

MARTON | NEW ZEALAND



FILTHY FUN FOR EVERYONE

Rangitikei Farmstay Woolshed, 498 Makihou Road, Marton
Saturday 19 September 2015 - first race starts at 10am
Tickets from \$25* - book online at eventfinda



For more information visit:

www.themudder.co.nz



The Bulls and District would like to thank the residents of Lancewood for folding the Bull-it-inns every month and to Pam, Teresa, Robyn, Lorraine and Debbie for delivering this around our community. With out your support and help this would be a much bigger task. Finally to Platts Pharmacy, huge thanks go to Graeme and his fantastic staff for printing the Bull-it-inn.

Bulls to Scotts Ferry

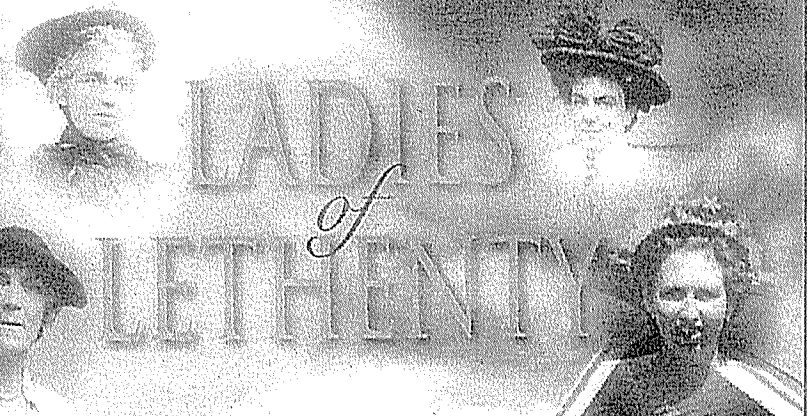
Issue 122

September 2015

B
U
L
L
S



B
U
L
L
S



CAROL DAWBER
SARAH PICKERING

Bulls: The Heart and Soul of the Rangitikei

You Herd It Here

Hello again, I hope this issue finds you all fit and well, with a spring in your step, after all the days are getting longer and hopefully the weather gets a bit warmer.

It has become increasingly apparent that my computer skills are a little rusty to say the least, children whizz through, if your lucky they say, do this, then that, no not like that then take over fix your mistake and finish the job in record time. However, I have realised that I have a skill base, some of them, they are interested in.

My daughter Prue, lives in Melbourne and when she 's a little homesick she gets in touch and asks me how to cook one of her favourite meals. Chicken and Leek pie, Tuna Asian Salad, Homemade Chicken soup or Forgotten Cookies to name a few. Wouldn't it be great that when your children leave home they can cook the food that nourishes the soul as well as the stomach. After spending time with her, my sister Karen and her family recently I realised how much I miss those simple things when your children and family drop in around meal times and the world seems some how seams better by the end of the night. That often, raucous debate around the table that inspires and sometimes inflames our senses. These nights fill us with the knowledge that we can make a difference, even if its just in own families, how perfect is that.

We all have a things that we do with ease but there are those things that just sometimes really make you want to pick up your laptop and through it over the nearest bridge. My skill base for those who know me well, I am really good at talking. Yes always got that restless and distracts others on my school report. Life skills are one of our most sort after attributes, and often they help us deal with stress, manage time wisely and communicate better. If you would like to donate some time and volunteer at any event or just your great computer skills I would love to hear from you. I would like to get a bank of people that we can use at community events, matching up their skill to a particular role. Just email me at bulls.community@xtra.co.nz. We are known as a community of doers but unfortunately I am still to meet you all. Your time and energy would be gratefully received.



received.

I am looking forward to hearing Doctor Tom talk regarding stress and how by changing the way we think about our responses to tough situations. Always think of the positive in any situation. I know for myself that there are times when I need a re think my initial response to certain situations ,firstly find a positive then sort out the rest.

Be kind to one another.

Jan

Keep New Zealand Beautiful

(KNZB) Clean-up Week is between 14-20 September. Neighbourhood Support in our area supports the activities organised during this week as a clean and tidy area indicates that the people take a pride in where they live. Last year

- 562 Clean-Up events nationwide (up 54% from 365 clean-ups in 2013. The previous highest number recorded was 403 clean-ups in 2010, the first year of the event)
- 15,312 Rubbish bags
- 8,850 Recycling bags
- 228 Schools (up from 124 in 2013)
- 246 Groups (up from 199 in 2013)
- 88 Businesses (up from 42 in 2013)

We personally took over 8 bags of rubbish away from around the area where we live and from down by the Kiwitea Stream. Since then one of the areas by the stream has been kept reasonably tidy and all fly dumping that has occurred has been reported to the council. One of our neighbours who goes out walking most mornings is often seen heading back home with a bag of rubbish that she has picked up from along the road side.

Whether you are involved with a community group, business, school, family, friends or an individual, it is so easy to get involved! All you need to do is to find a local spot that needs a clean-up, then log on and register your event. Once you fill in the registration form, KNZB will provide you with all the information you need to help make a difference. If you are an individual who is keen to get involved, there is the option to join an existing event in your area

KNZB Clean-Up Week's central aim is to increase community participation of all kinds, but also addresses issues of sustainability, environment, health, crime and social inclusion.

You will need to contact your local council to find out about their policy on the collection of the KNZB bags.

KNZB website is www.knzb.org.nz. Alternatively you could telephone the Marketing Manager on 022 356 6334 or email marketing@knzb.org.nz.

Allan Muntz, Neighbourhood Support

Clifton School Show Day Hangi



12pm Friday the 16th of October
Clifton School, Clifton Street, BULLS

Bring the family for
a picnic lunch



Limited Tickets

Tickets must be presented
on the day to receive your meal

Phone : 063221544 or Email : office@clifton.school.nz

\$10 per meal ticket
available at the
School Office from
the 31st of August
till the 9th of
October



Coming Soon, The Bulls Rose and Flower Show

Back in 1877 something started in Bulls that, 138 years later, in 2015 is still going strong. Yes, we are preparing for the 138th Bulls Rose / Flower Show --- you can see why it is said to be the longest continuous running show in NZ and this year it is on SATURDAY, 21st November.

How can you bypass the opportunity to share in this occasion? In 1914 a Children's' section was added and is still there, one for 10 – 13 years of age, one for 9 years and under, plus a new junior entry in the Baking Section. This is a great opportunity for parents to share, either together or individually. The children's section has a variety of categories to chose from. Cut Flower Section, 21 different flowers to choose from, either from yours or someone else's garden.

For growers please plant, trim, prune and care for those precious, beautiful blooms and enter the Show. Schedules will be available soon, start planning now.

The Cake and Plant stalls will be huge, the choice magnificent and inviting, come prepared to buy some. The Vegetable stall guarantees freshness and a good price. If you have a surplus of fruit and vegetables please contribute to us for fundraising.

Be part of it this year, part of Bulls history and Bulls community. Keep the Rose / Flower Show going. If you need any further information please phone me. Robin Boucher.

**Bulls and District
'Good Sort'**

Scullys

September 2015

Scullys

I would like to nominate.....

Please put an address and contact details of the nominated resident, and your reasoning why they are a "Good Sort" Please place your sealed letter in the box provided at the information centre. Please get your thinking cap on and get those letter in, Thanks

Soaring to Success
Whaia ou huacahi ki te mana

You are invited!

Mr Neill Gordon, Clifton School's Principal for more than 30 years, is retiring at the end of term three.

We are pleased to invite you to a gathering to wish him well in his retirement.

Please join us in our Discovery Centre at Clifton School, on Friday 18 September from 2:00pm to 7:00pm.

For catering purposes, please RSVP by 3:00pm, Monday 14 September to office@clifton.school.nz or phone 06 322 1544.

We look forward to seeing you there!



New Book Launch in Bulls

Another event in Bulls, about Bulls, the story of one of Bulls houses, that is this month 100 years old, and the story of the remarkable ladies who lived in that house. This is also a story, telling and showing, the life and times, and the history, of Bulls over the last 100 years. Researched and written locally, by the family, a book to interest and fulfil. Sunday 6th September, 11.00am at the Town Hall.

**Congratulations
Graeme Platt,**

He was nominated as our first "Good Sort". Graeme is an active member of our community who always contributes to local projects.

Thanks Graeme.

Scotts Ferry Branch Rural Woman, NZ

Congratulations to our local Rural Woman who competed recently at the Provincial Show Table Competition in Marton, with an Australian theme. They won with a Child's Dress,

If your interested in joining this fabulous group of ladies contact Shona Field

3220927

**LET US MAKE
YOUR CAR SHINE**

We're fundraising to help Starship fight Mitochondrial disease.

The funds raised will go towards providing more training, awareness, and a hope for a cure for children and families living with the effects of Mitochondrial disease.

Date: 19th September 2015

Time: 10:00am - 2:00pm

Where: The Rangitikei District

**Remember the Fireman's Ball
&
Brigade Honours Celebration**

Saturday 17th Oct 2015

The Bulls Town Hall

Doors Open 6:45 pm

Tickets \$20.00

Cash Bar & Supper

Formal Dress

Live Band Help!

Ryan Connor 0276857677

Braden Hammond 0274420583

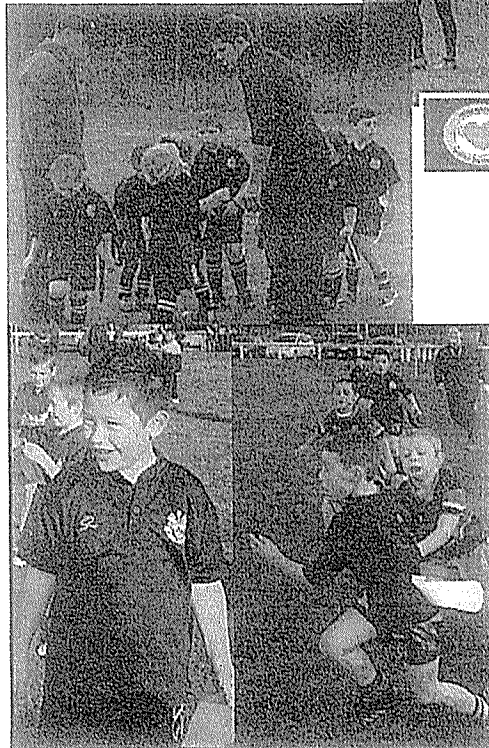
All proceeds to the Fire Station

Donations welcome

www.starship.org.nz/fundraising/MitochondrialDisease

Bulls and District Junior Rugby Club Day

What a fabulous turnout for the Junior Rugby Club and their Club Day. Thank you Richelle and Terry Linklater for inviting me to join on this annual event. It's great to see that Junior Rugby is alive and well in Bulls. I was really impressed with the teams and how they listened to coaches and parents helping out on the side lines. The huge numbers of Grandparents, Teachers and wider family members there watching their children and cheering them on. Community spirit is very much alive and well down at the domain. A big thanks must go to a very proactive club and its committee



HAT HOLE QUIZ NIGHT 2015

TUESDAY 6th OCTOBER - 7.30pm

STU WILSON WILL BE AT THE EVENT

TEAMS OF FOUR - \$1000

TEAMS OF THREE - \$800

TEAMS OF TWO - \$400

FUND RAISING EVENT FOR THE BRFC 2016 SEASON

FOR MORE INFORMATION CONTACT THE BULLS HEALTHY BASTARDS SENIORS



FLAMINGOS FLOCK BULLS

Rogue flocks of Flamingos, most noted for their eye catching pink feathers, have been documented unseasonably migrating south. Three flocks of the famous birds of the Camargue have been mapped making their way south towards New Zealand, and carrying on their current route they should pass through Bulls in early September.

"It is such an exciting and unusual phenomenon that these magnificent creatures might really be coming to Bulls!" Local Flamingo Flocking expert, and head teacher at Bulls Kindergarten, Kerri Osborne commented.

"From initial reports it appears that these flocks are the new modified versions, which many won't be aware of. Territorial, highly strung and needy, these birds will potentially roost on your property, spend hours in your bathroom, eat all your food and utilise your wifi for internet shopping and future travel bookings" said Ms Osborne.

She cautions that should the Flocks arrive here in Bulls, only trained professionals should attempt to remove these vexatious, but highly loveable, birds. "We do not want anyone, birds nor locals, to be harmed".

In a timely coincidence, Ms Osborne has access to a team of specialist "Deflockers" or removal technicians who can remove flocks safely for a \$25 fee. "My team of experts have generously donated their time to this cause and will donate their deflocking fees to the kindly which is desperately trying to raise \$43,883 funds to replace the outdoor play area that had to be demolished last year due to safety concerns"

Ms Osborne's deflocking team is also able to relocate the birds to a nominated address for a \$25 fee too so the whole community can enjoy the fun of getting flocked. An Insurance Policy can also be purchased for \$25 for locals to avoid being flocked.

The Flockings will be followed on a Facebook page set up for the event www.facebook.com/FlamingosFlockBulls and locals are encouraged through weekly prize draws for top photos and comments to upload their own photos and get involved. All flocking forms, nominations and Flocking insurance forms can be found on the facebook page or by contacting the deflockers at Flamingosflock-bulls@gmail.com or 0273446673.

"An event like this is aimed at engaging with our community, reminding them of the kindergarten's long term fundraising plight and having a bit of fun along the way!" said Ms Osborne. "So please - have fun and get flocked! "

Community Health and Well Being

What's happening At Bulls medical Centre

Thanks to Jan for the opportunity in adding an update for what is going on at the Medical centre.

There are a few new faces at the Medical Centre where we welcomed Emma and Dr Sonali to join us . Emma is one of the cheerful team welcoming you to the centre on Reception and Dr Sonali is our new registrar who is finishing off her GP training with us.

We have been fortunate to have a variety of doctors working with us as focus over then next few months which will allow us to keep accessible services for the community . Dorothy Dowd is with us this month and it is great to see her back from Australia .

It is the season for cough colds and winter ills with a lot of respiratory tract infections and our friendly team of nurses will also be seeing and assessing anyone who is in need of assessment working with the Docs . There have been a lot of influenza type illnesses around nationally and Bulls has not missed out . A few unlucky people have been very miserable with this and if you have the typical flu type symptoms please ring the centre and catch up with the nurses who can advise or arrange for you to be seen What's hap-

10 TIPS to promote respect and prevent abuse

- 1 Love and cherish your older relatives/whanau.
- 2 Speak respectfully to older people/kaumatua.
- 3 Include older people/kaumatua in your social activities.
- 4 Phone or visit your older relatives/whanau.
- 5 Support older people/kaumatua to spend their money how they wish.
- 6 Encourage and support older people/kaumatua to make their own decisions.
- 7 Honour older people 's/kaumatua 's wisdom.
- 8 Enable older people/kaumatua to walk at their own pace.
- 9 Respect older people 's/kaumatua 's stories.
- 10 Seek advice from an Elder Abuse and Neglect Prevention Service when you think an older person/kaumatua is being abused or neglected.

Vanilla Panna Cotta

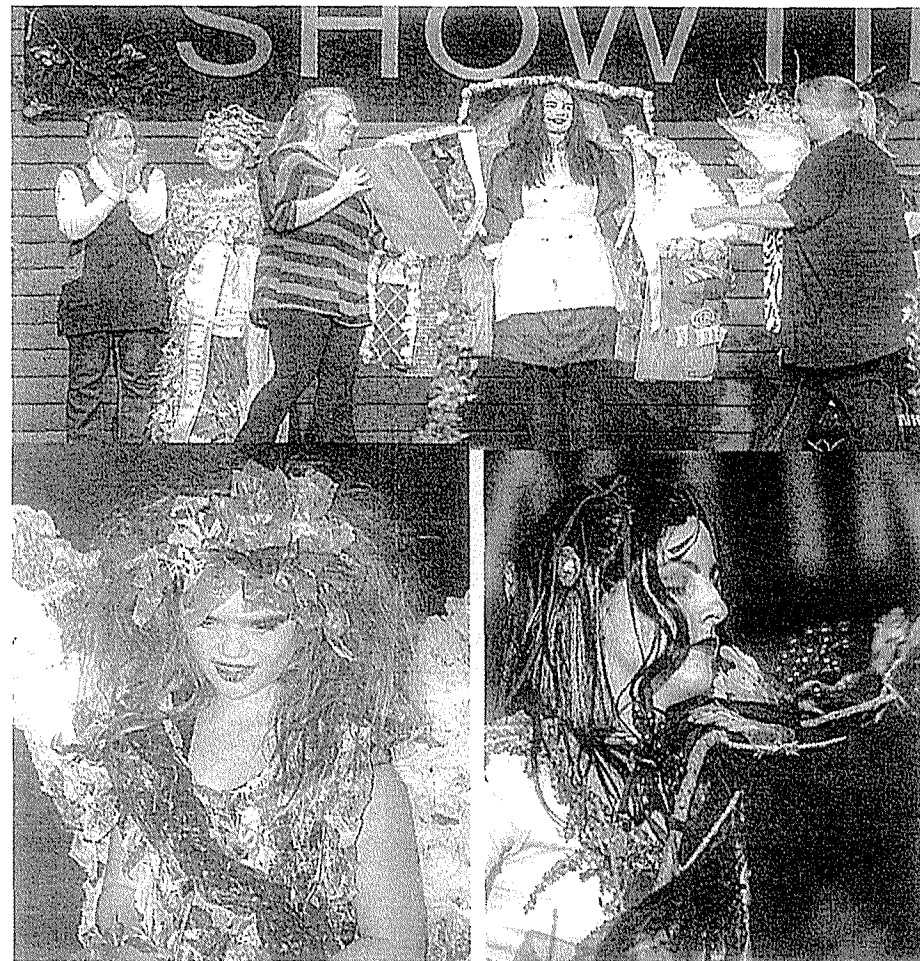
1 1/2 Cups Cream	1 1/2 Cups Milk
1 Vanilla pod	1/2 Cup of Caster Sugar
2 1/2 teaspoons gelatine powder dissolved in 2 teaspoons of water	

Bring cream, milk and vanilla pod to a gentle boil, then stir in sugar till dissolved and add in the dissolved gelatine. Remove Vanilla pod and pour into greased mould or small glasses and set in the fridge for at least 4 hours. Serve with sweetened yoghurt and raspberries

Thanks to the Team at Mint for this fabulous recipe.

Patterson Rose , Pop up Shop, Bulls Town Hall Foyer
Monday 21st September, 5 to 7 pm, Tuesday 22nd 9am to 4 pm
Designer Bedding, Linen and Bedroom Accessories

What A Load Of Bull Wearable Arts Show 2015
 Congratulations to Kristine Hart, Supreme Winner for 2015, what an amazing costume, well done.



Left; 1st in the Children's Recycled, Stella Beaven & Maia McKenna, Save the Seas.

Right; 2nd in the Fibre Art ,Kelly Robson & Jade Bradley with Snow White.

I would like to acknowledge our Funders, Sponsors, Volunteers, and those who purchased tickets for this event, thanks.

To the fabulous entrants and their amazing costumes, your continued support by entering, ensures the continued growth. The children's entries from South Makarikiiri and Bulls Schools keep on increasing in numbers which, is outstanding. The standard of workmanship in the both the Adult and Children's section has improved, which raises the quality of entrants garments.. Well done to you all. A fantastic night was had by all.

Rangitikei Golf Club News

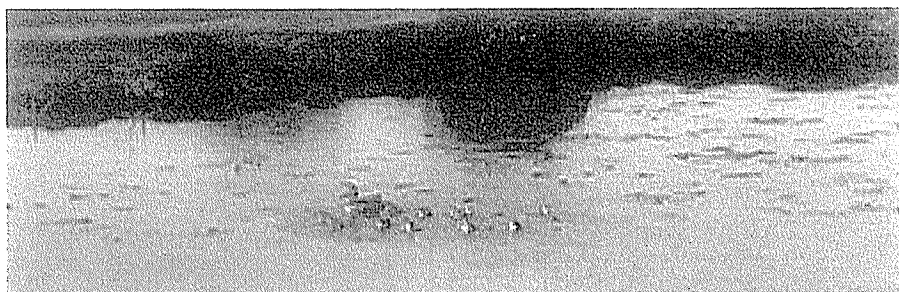
Submitted by Club Secretary Bronwyn Meads

Course report: We have had such a wet winter but our course survived brilliantly and is looking great. The new greens mower is here and making a vast improvement with a better cut. Steve Ellery our Greenkeeper must be commended on his work. The removal of the gum trees are brilliant. Thanks Bruce Kinloch for your work cleaning drains and surrounds. We are so proud of our course. One of our life members Vic Simcox said we are the best in the southern hemisphere. Aint that the truth.

Bus Trip: we will be off on an adventure sometime this year to a destination within 2 hours. We will also be planning to go up to Waiouru for their Xmas Cheer.

Easter 2016: Our anniversary is set for Easter Weekend 2016. Liz Kinloch, Bronwyn Meads and Heather Craig are on the organising group, if you would like to join us with the planning or have any photos or stories from the past please let the club know.

A mother and her ducks: isn't it so lovely to see the mother duck and her ducklings on our pond by the 2nd. They will love some crusts. It's been awhile since we have seen any ducks there. There is certainly so much water in the pond. The spring flowers are looking lovely, thank you to all the ladies that have planted the bulbs and to the men who have planted our new trees. They look superb.



Forget me Not Tournament: Recently Rangitikei hosted the Alzheimers Organisation where around 50 people competed and raised money for Alzheimers. It was a great day, the rain stayed away and the course was in magnificent order. It was great to host players from around the region

We are looking forward to hosting Bulls School on the 22nd September, where they use our grounds for their annual cross country. The course is perfect for the competitors and a great view for spectators. We love bringing the community out to us, and if there are any other opportunities please contact us, we are open to new ideas.

Rangitikei Golf Club are hosting a conference as part of the NZ Golf Series on Thursday 24th September. It starts at 9.30am with a range of speakers, would love anyone that has interest to attend this free event. Please contact Bronwyn on 0272287182 for more information.

September:

Sat 5th: Golf club Dinner as part of the \$10 haggie

Tuesday 22nd: Bulls School Cross Country

Thur 24th: NZ Golf Series Conference 9.30am start

"Alive and very well at Bulls Museum "

The museum needs to send a request to the Bulls Community – what better way to reach you all than through the words of our Bull-It-Inn. So here is our request and information. In the last two years Bulls Museum, its members and volunteers have achieved a huge amount of success and recognition throughout NZ and with its many overseas visitors. The displays are local history based and tell the Bulls story, its place in New Zealand's history and to local people, the links they have to great events. Recent examples have been the Chris Amon Display, the Flock House Story and of course the permanent WW1 display with Bulls contribution to this conflict. This display this year has been seen by hundreds of people from around the world and New Zealand at this memorable time of the WW1 Centennial. In May we reached our highest ever visitor numbers, with the follow-on benefits of donations, book sales etc. We have now reached a point where we want to increase our permanent displays to include Chris Amon and Flock House and to resurrect the display of traps, carts, saddles and bridles etc, many of which were used in the film "River Queen" starring Kiefer Sutherland. We have the resources, what we need now is local people to complete the picture.

We need local people who can assist and join our volunteers in meeting visitors in the museum and advise them on what our museum offers. We are the only local small town museum open 7 days a week. We do not charge an entry fee, our income is from donations, sales of a range of books, souvenirs and other items. Our volunteers cover the whole week, some giving 2 – 3 hours each week, others when required. Some also do an occasional Saturday afternoon. The volunteer position is one of great interest if you want to know more about your town and its amazing, surprising history. You can also share your knowledge and interest with others and be as involved as you want to be.

Please consider your situation. Can you give a few hours a month to this great asset in our town? There is more to tell you, if you are interested in finding out please call, we will meet you and show you round. Thank you for your interest and attention.

Robin Boutcher.

Contacts:- Robin Boutcher 3220045 Betty Sanson 063231324

Thoughts From Our Mayor

What a fantastic job I have! Sure times have been difficult with the headaches around the flood, but to see how people have supported each other, checked on their neighbours and pitched in to help, has been magnificent and make me proud to be your Mayor. The Rangitikei is comprised of small towns and rural communities where community support has been outstanding.

Bulls is growing, and the region is becoming very aware of it, people are taking notice that it is a great place to set up a business and I have been in discussions with people who see the great potential Bulls has to offer.

The purchase of the Criterion Hotel by our joint venture partners means the serious planning and fundraising will start, which will enable us to build the new Information Centre and Library complex.

Beth and I look forward to seeing you all at the wearable arts – one of these day I will have the courage to be an entrant!

Andy Watson

RECEIVED

09 NOV 2015

Creative Communities Scheme Project completion Report form

To: SW
File: 3-GF-3-3
Doc: 15 312



All recipients of funds from the Creative Communities Scheme must complete this form within two months after their project is completed.

If you do not complete and return this form you will not be eligible for future funding through this scheme.

Please return the completed form to –

Rangitikei District Council
Attn: Samantha Whitcombe
Private Bag 1002
Marton
4741

- | | |
|---|--|
| 1. Project title/grant number | HIGIO |
| 2. Name of applicant | Highland Dancing Association of Manawatu Rangitikei Wanganui |
| 3. Name & location of | Rangitikei & Districts Open Championship & Premiership – held Marton 19/9/15 |
| 4. Date of Project | 19 th September 2015 |
| 5. Amount received from the Creative Communities scheme | \$1200.00 |

Creative Communities Scheme Project completion Report form

6. Please give details of how the money was spent. Please include *all* project costs and income, not just how you used the Creative Communities Scheme funds. If you do not have enough room please use an additional sheet of paper and attach it to this form.

Project costs		
Item	Detail	Amount
e.g. Hall Hire	3 days hire at \$100.00 per day	\$300.00
Registration	Competition Reg Fees – Scotdance	\$ 166-45
Registration	Competition rego fee – ScotdanceNZ	\$ 15-00
Hall Hire	(2 days)	\$ 200-00
Judges x3	Airfares x 3 judges	\$2804-62
Judges x3	Judging fees	\$ 600-00
Judges x3	Accommodation & meals	\$ 717-00
Programme	Printing Costs	\$ 196-00
Prize Money	Awards	\$1714-00
Medals & Trophies	Awards	\$4660-98
Stationery	Stamps, envelopes etc	\$ 263-00
Total costs		\$11337-05

Project income		
Item	Detail	Amount
e.g. Ticket sales	300 tickets at \$20 per ticket	\$6,000
Fundraising	Food Sales through kitchen on day	\$ 408-70
Fundraising	Raffle	\$ 499-00
Donation	ScotdanceNZ	\$ 250-00
Entry fees		\$2672-00
RDC	Creative Community Grant	\$1200.00
Pub Charity	Grant	\$1500-00
Total costs		\$6529-70

Creative Communities Scheme Project completion Report form

7. How many people?

Actual number of *active participants*? (e.g. people at a workshop) _54_____

Actual number of *attendees*? (e.g. audience members) _____ 190+ _____

8. Highlights: Give a brief description of the highlights of your project. Also describe what didn't work so well and what you might do differently next time?

The Highland Dancing Association of Manawatu Rangitikei Wanganui are delighted that we have held another successful Championship event in our local community. This event saw competitors travel from all over the North Island.

Feedback from visitors and competitors was extremely favourable and positive. They enjoyed our community and a well run event.

Next time we may look at trying to hold this event during the school holidays as we feel that some competitors were unable to travel long distances over a weekend due to upcoming school examinations.

Creative Communities Scheme Project completion Report form

9. How did your project benefit your community?

- Many locals attended our event for entertainment and to see family and friends who had children competing.
- Our competitors and their families made use of the local facilities and took advantage of the opportunity to visit our local shops

10. This report was completed by:

11. Joanna Gribbon – Treasurer – Highland Dancing Association or MRW



Creative Communities Scheme Project completion Report form

ENTERED



All recipients of funds from the Creative Communities Scheme must complete this form within two months after their project is completed.

If you do not complete and return this form you will not be eligible for future funding through this scheme.

Please return the completed form to –
Rangitikei District Council
Attn: Samantha Whitcombe
Private Bag 1002
Marton
4741

RECEIVED

08 APR 2016

To: SW
File: 3-GF-3-3
Doc: 16 4 54

1. Project title/grant number MAR 176

2. Name of applicant MARTON AND DISTRICT PIPE BAND

3. Name & location of AUGUST 2015 TUTORING FOR BAND MEMBERS

4. Date of Project AUGUST 2015 - ~~MARCH~~ MARCH 2016

5. Amount received from the Creative Communities scheme \$ 1100 - 00

6. Please give details of how the money was spent. Please account for both the Creative Communities Scheme funding and your own financial contribution to the project.

Project Costs

Item	Detail	Amount
e.g Hall Hire	e.g 3 days hire at \$100.00 per day	e.g \$300.00
Summer School	TUITION FEE - 1 DRUMMER	\$ 395-00
J McCAFFREY	TUITION - PIPERS	\$ 200-00
M BROWN - KATCHARA	TUITION - PIPERS	\$ 100-00
T BERRY	TUITION - SIDE DRUMMERS	\$ 400-00
J McCAFFREY	TUITION - PIPERS	\$ 125-00
C BERRY	TUITION - TENOR DRUMMERS	\$ 200-00
		\$
		\$
		\$
		\$
		\$
A : Total Cost		\$ 1420-00

Project Income

Item	Detail	Amount
e.g Ticket Sales	e.g 250 tickets at \$15 per ticket	e.g \$3750.00
		\$
		\$
		\$
		\$
		\$
		\$
		\$
		\$
		\$
		\$
B : Total Income		\$

7. How many people?

- Write down the numbers of people that actively participated
- Write the number of people that attended (such as the audience)

30

The band played at the Royal Edinburgh Military Tattoo in Wellington and the National Pipe Band Contest in Feilding.

8. Highlights: Give a brief description of the highlights of your project. Also describe what didn't work so well and what you might do differently next time?

The tutoring received by band members enabled the band to perform at the Tattoo and 3 local Pipe Band contests.

The tutoring has resulted in several new members playing with the band and so the band has a higher local profile + increased enthusiasm for the upcoming year.

Ongoing tuition is required and new players have to be attracted to start learning an instrument. This is an ongoing project for the band.

9. How did your project benefit your community?

The community has benefited by having an active community based Pipe Band in the Rangitikei that is performing at local events.

The band demonstrates cultural diversity in the local community and provides an opportunity for people to learn an instrument within a team environment.

The wide range of ages is within the band and so the youth members especially gain some life skills by being involved within the band.

This report was completed by:

TIM SCOTLAND
T. Scotland

Transaction List

Non Profit Organisation - 03-0683-0143675-000

						Current Balance as at 08/04/2016:	
Payment Date	Description	Other Party Name	Particulars	Analysis Code	Reference	Debit	Credit
07/04/2016	Funds Transfer	0683-0143675-001	Allan Cotton	Education	17875478	\$100.00	
07/04/2016	Payment	T Berry	Tutor	Education	17876001	\$400.00	
07/04/2016	Payment	C Berry	Tenor Tutor	Education	17879942	\$200.00	
07/04/2016	Payment	J McCaffrey	J McCaffrey	Project	17882364	\$125.00	
07/04/2016	Payment	Gannaways	Gannaways	Projects	17882365	\$145.00	
07/04/2016	Payment	NZ Pipe Band Champs	Feilding Cha	Contest	17882374	\$65.00	
		Closing Balance:					\$14,665.81 CR
05/04/2016	AUTOMATIC PAYMENT	McKenna S M A &	s. mckenna				\$10.00
		Closing Balance:					\$15,700.81 CR
31/03/2016	Credit Interest	CREDIT INTEREST	\$11.02	Exempt			\$11.02
		Closing Balance:					\$15,690.81 CR
23/03/2016	TELLER		Teller Dep				\$110.00
23/03/2016	TELLER		Teller Dep				\$200.00
23/03/2016	TELLER		Teller Dep	Wzd030683014	Wzd030683014		\$565.00
		Closing Balance:					\$15,679.79 CR
21/03/2016	Payment	Spic n Span Dryclean	Spic n Span	Projects	17637846	\$590.80	
21/03/2016	Payment	Rosie Torrington	Kilts	Projects	17637847	\$392.00	
21/03/2016	Payment	Turakina Women's Ins	Sock tops	Projects	17659624	\$240.00	
21/03/2016	Payment	Lee Nitschke	Socks & Flas	Projects	17673124	\$295.68	
		Closing Balance:					\$14,804.79 CR
17/03/2016	DIRECT CREDIT	MUNRO T J	Munro G & T				\$50.00
		Closing Balance:					\$16,323.27 CR
14/03/2016	Payment	Genesis Energy	Power	Hall	17557590	\$55.39	
		Closing Balance:					\$16,273.27 CR
11/03/2016	DIRECT CREDIT	HUNTER A J	A.Hunter				\$30.00
		Closing Balance:					\$16,328.66 CR
09/03/2016	Funds Transfer	0683-0143675-001	Internet	Transfer	17589087	\$5,000.00	
		Closing Balance:					\$16,298.66 CR
08/03/2016	BILL PAYMENT	CALKIN H M	Nationals	Calkin	McDonald		\$200.00
08/03/2016	DIRECT CREDIT	CALKIN H M	Calkin	2015	Hall Hire		\$400.00
		Closing Balance:					\$21,298.66 CR
07/03/2016	Payment	Mcllwaine	Drum Stands	Projects	17352497	\$257.95	
07/03/2016	Payment	The Tour Piper	Reeds	Contests	17557587	\$220.00	
07/03/2016	Payment	HDS Brown-Hatchard	Hamish	Projects	17557588	\$100.00	
07/03/2016	Payment	S Berry	Food - Ham	Contest	17568111	\$110.00	
		Closing Balance:					\$20,698.66 CR
02/03/2016	DIRECT CREDIT	DUNCAN KAREE AN	Duncan	Family			\$300.00
		Closing Balance:					\$21,386.61 CR
01/03/2016	TELLER		Teller Dep		101911		\$108.00
		Closing Balance:					\$21,086.61 CR
29/02/2016	Credit Interest	CREDIT INTEREST	\$14.82	Exempt			\$14.82
		Closing Balance:					\$20,978.61 CR
22/02/2016	Funds Transfer	0683-0143675-001	Tattoo Vans	Contests	17417737	\$300.00	
22/02/2016	DIRECT CREDIT	NEW ZEALAND FESTIVAL	New Zealand	Honorarium	Festival		\$3,000.00
		Closing Balance:					\$20,963.79 CR
19/02/2016	Payment	Mcllwaine	Mitre 10	Project	17277958	\$115.93	
		Closing Balance:					\$18,263.79 CR
16/02/2016	Payment	Gannaways	Plaids & Tar	Projects	17352501	\$8,134.00	
		Closing Balance:					\$18,379.72 CR
15/02/2016	Payment	Genesis Energy	Power	Hall	17277956	\$57.91	
		Closing Balance:					\$26,513.72 CR

09/02/2016	Payment	HBC & District Pipe	Bonnet	Projects	17230685	\$70.00	
09/02/2016	Payment	C J Photography	Photos Nelso	Contest	17238281	\$90.00	
09/02/2016	Payment	J McCaffrey	Tutoring	Projects	17277937	\$200.00	
09/02/2016	Payment	New World Marton	Fundraising	Contests	17277939	\$23.19	
		Closing Balance:					
05/02/2016	DIRECT CREDIT	LION FOUNDATION	Grant Pmt	05.02.16	Lion Found		\$2,000.00
		Closing Balance:					
		Opening Balance:					
							\$26,571.63 CR
							\$26,954.82 CR
							\$24,954.82 CR

Transaction List

Non Profit Organisation - 03-0683-0143675-000

					Current Balance as at 08/04/2016:		\$14,665.81 CR	
Payment Date	Description	Other Party Name	Particulars	Analysis Code	Reference	Debit	Credit	
30/10/2015	Credit Interest	CREDIT INTEREST	\$2.26	Exempt			\$2.26	
	Closing Balance:							\$5,269.21 CR
27/10/2015	CHEQUE				101905	\$51.11		
27/10/2015	DEPOSIT						\$215.00	
	Closing Balance:							\$5,266.95 CR
22/10/2015	CHEQUE				101906	\$35.00		
22/10/2015	Payment	RNZPBA Inc	Summer Schoo	Education	16332334	\$395.00		
	Closing Balance:							\$5,103.06 CR
15/10/2015	CHEQUE				101904	\$63.02		
	Closing Balance:							\$5,533.06 CR
14/10/2015	CHEQUE				101903	\$24.90		
14/10/2015	DIRECT CREDIT	McKenna S M A &	s. mckenna				\$15.00	
	Closing Balance:							\$5,596.08 CR
13/10/2015	CHEQUE	Genesis Energy	002407014600		101902	\$94.58		
	Closing Balance:							\$5,605.98 CR
06/10/2015	DIRECT CREDIT	McKenna S M A &	s. mckenna				\$15.00	
	Closing Balance:							\$5,700.56 CR
	Opening Balance:		\$5,685.56 CR					

Creative Communities Scheme Project completion Report form

APR 2015
SW
3-GF-3-3
16 11



All recipients of funds from the Creative Communities Scheme must complete this form within two months after their project is completed.

If you do not complete and return this form you will not be eligible for future funding through this scheme.

Please return the completed form to –

Rangitikei District Council
Attn: Samantha Whitcombe
Private Bag 1002
Marton
4741

1. Project title/grant number	Marton Country Music Festival
2. Name of applicant	Anne George
3. Name & location of	Wilson Park Marton
4. Date of Project	15 - 16 - 17 Jan 2016
5. Amount received from the Creative Communities scheme	\$2,500

6. Please give details of how the money was spent. Please account for both the Creative Communities Scheme funding and your own financial contribution to the project.

Project Costs

Item	Detail	Amount
e.g Hall Hire	e.g 3 days hire at \$100.00 per day	e.g \$300.00
	Break down of particular items as attached	\$
		\$ 14,297.04
		\$
		\$
	Creative Communities	\$ 2,500.00
	Financial Contribution	\$ 11,797.04
		\$
		\$
		\$
		\$
		\$
		\$
A : Total Cost		\$ 14,297.04

Project Income

Item	Detail	Amount
e.g Ticket Sales	e.g 250 tickets at \$15 per ticket	e.g \$3750.00
Ticket	500 tickets @ \$50	\$ 25000
Raffles	500 tickets @	\$ 1000
Merchandise	Assorted Sales	\$ 5000
Kitchen	Drinks/Sandwiches/Chips/Sausages	\$ 6000
Grants	Lion Foundation/RDC Initiative	\$ 10000
	Pub Charities	\$
		\$
		\$
		\$
		\$
		\$
B : Total Income		\$ 47000

9. How did your project benefit your community?

It brought many visitors to town. Their arrival brought a sense of anticipation to the community. Many members of our friendly community went out of their way to welcome the visitors and many friendships were made or renewed. The festival creates a happy and positive atmosphere throughout the town.

The festival allows all locals to get up on stage and show their talent - if they wish. There is no age or ethnic barrier.

This report was completed by:

Anne George AlGeorge

7. How many people?

- Write down the numbers of people that actively participated
- Write the number of people that attended (such as the audience)

80

2800

8. Highlights: Give a brief description of the highlights of your project. Also describe what didn't work so well and what you might do differently next time?

Everything worked wonderfully
A highlight for me was to see so many locals attending and enjoying the festival.
The feed back from everyone has been very positive and supportive

Tabled at Creative Communities

On 25 November 2015

Project report form



Creative Communities Scheme

If you do not complete and return this form you will not be eligible for future funding through the Creative Communities Scheme.

All recipients of funds from the Creative Communities Scheme must complete this form within two months after their project is completed.

Please return the completed form to –
Samantha Kett
Governance Administrator
Private Bag 1102
Marton 4741

RECEIVED

01 JUL 2015

To: PJ
File: 3-GE-3-3
Doc: 15 1157

1. Project name: Tribute for 100yrs anniversary ANZAC DAY

2. Name of applicant: Pauline Baddley

3. Location of project: The Quilted Gunkoot Tailor

4. Date of project: 2014/2015 April

5. Amount received from the Creative Communities Scheme: \$ 865.20

6. Please give details of how the money was spent. Your contribution to the project and the Creative Communities Scheme funding you received must be accounted for.

My individual contribution was 30⁺ hours to create unique display for the Community.

\$ 343.09 ^{incl cost}
 \$ 343.37 ^{incl cost}
 \$ 50.00 ^{needs}
 \$ 138 ^{used}
 874.46 ^{cost}

Unable to have receipt for feathers as the lady not willing to let her source be revealed. They were certainly beautiful feathers. I was able to carry out the task.

7. Please provide details about the project or activities that were supported by the Creative Communities Scheme. Explain what was successful, and what didn't work so well.

Fabulous commitment from the community to knit and crochet. Ladies enjoyed coming together weekly for poppy project. Encouraged individual creativity. Once window display began it was a talking point for overseas and local people to go back to their communities and start something similar. without funding would not have been successful. The school contribution disappointing. certainly needed more enthusiastic parents and children.

8. Give a brief description of the highlights of your project, including the number of participants.

The amount of poppies that were made considering various tasks. some idea which was great. Amazing stories that came with the poppy. The creativity of the local ladies. Encouraging other people to get involved and start something for their community. I enjoyed creating the display. Never taken on a big project like this. certainly learnt from this project.

9. How did your project benefit your community?

A stunning visual display in the main street. The shops, RSL, Museum get to keep the pieces for future Anzac displays. Academic choir using several pieces for church service on 26th April. Taihape Majestic Theatre also will be using some of the pieces for display in June. Workings club will be also using some of the work for their 1915/1940's night on the 25th April.

10. What, if any, are the next steps (for your project, for you and/or for the people involved)?

Afternoon Tea ^{24th April} and sign the book for museum.
The book has photos and small write up about how project was able to become an amazing tribute.

11. This report was completed by:

Name:

Pauline Boodleby The Quilted Comfort

Address:

6 Tui Street
Taihape

Date:

13 April 2015

Phone:

06 380 1731

02 7288 1731

Email:

paulinebod@xtra.co.nz

Rangitikei District Creative Communities NZ

Thank you very much for the opportunity to create a amazing display to celebrate Anzac 100 years Gallipoli.

It was amazing the number of poppies created by the community. I expected 600 but landed up with a awesome 1118. Great effort considering Waiouru Muesum started project as well.

My apologies for the delay in sending report back.

Kind Regards



Pauline

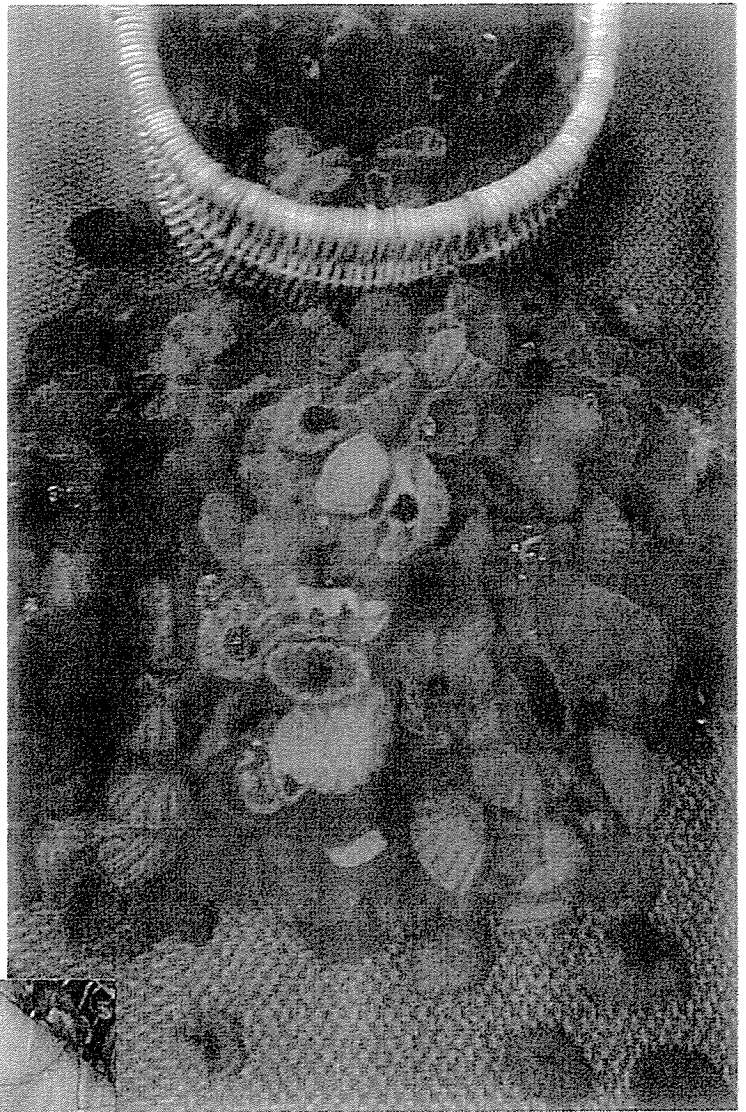
The Quilted Gumboot

6 tui street

Taihape

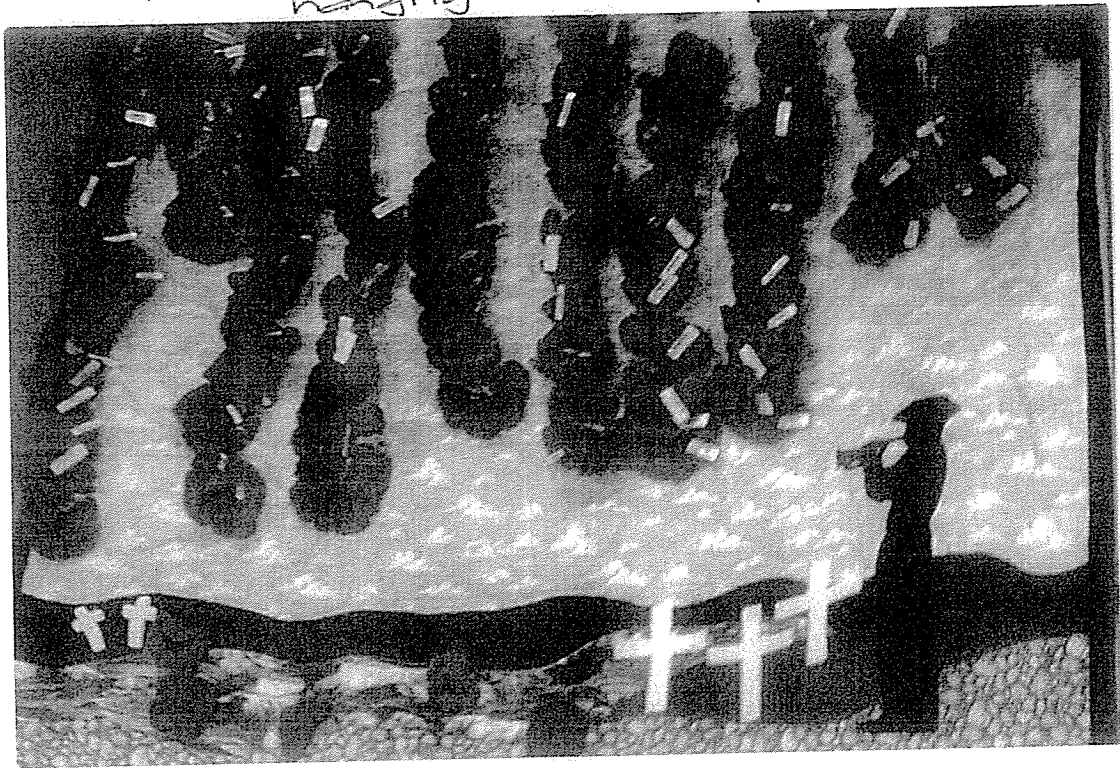
4720

1118 Poppies



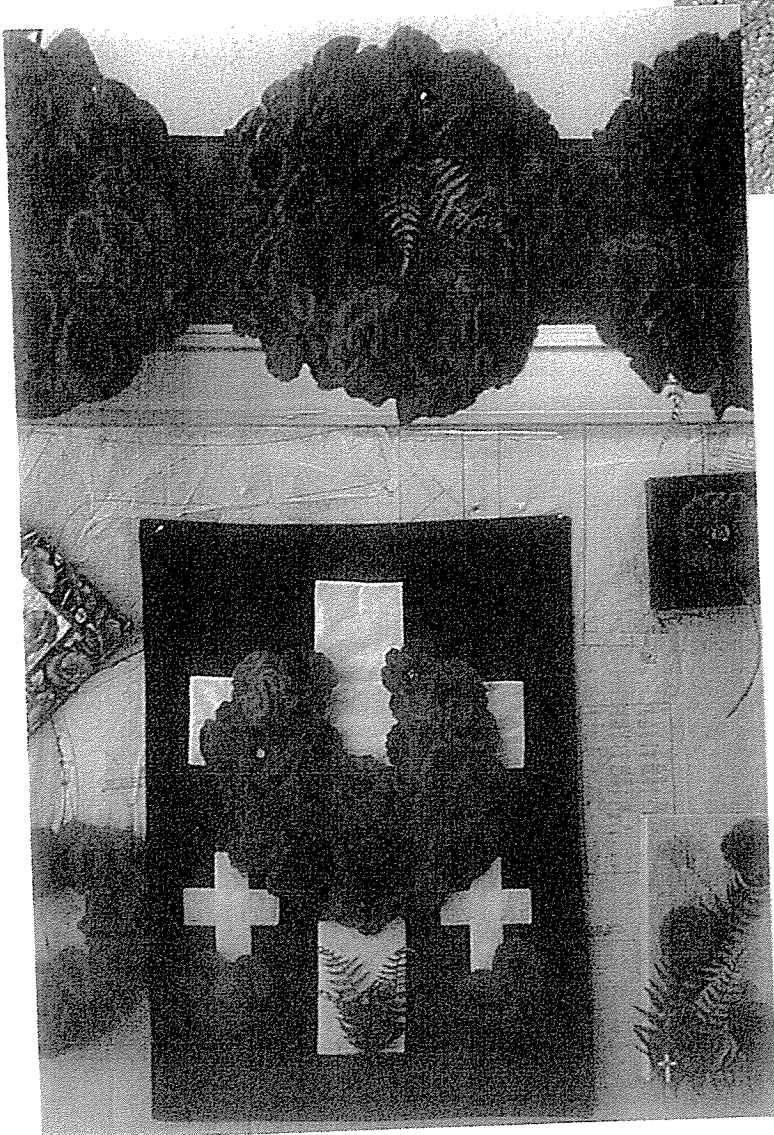
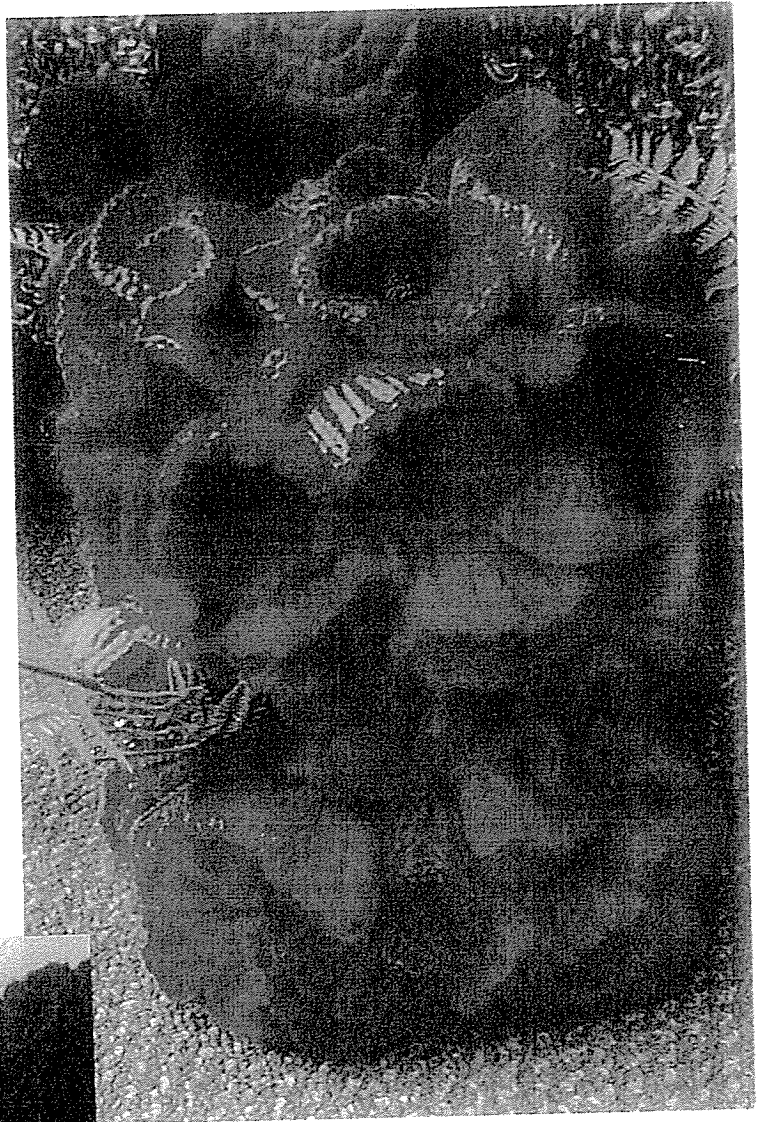
Peace Lilly with
Poppies x 2 made
Medical Center and
Library

RSA Quilt - Soldiers names on the poppy hanging in The Tailgate Workneymans club

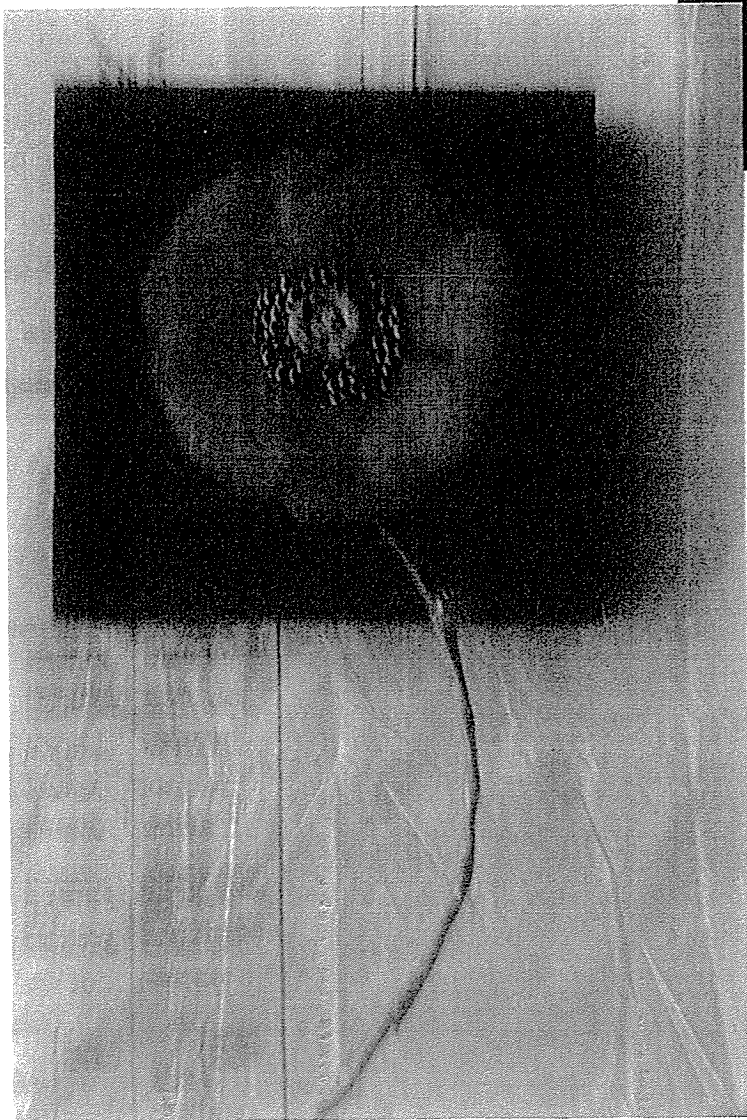


Korowai created





Assortment of pieces created.





TAX INVOICE

The Quilted Gumboot

Invoice Date 19 Sep 2014
Invoice Number INV-1640
Reference Services, Photocopying
GST Number 57479922
Ruapehu REAP Inc
P O Box 86
Taihape
4742

Description	Quantity	Unit Price	Amount NZD
Photocopying Charges - April - September	1.00	59.22	59.22
		Subtotal	59.22
		TOTAL GST 15%	8.88
		TOTAL NZD	68.10

Due Date: 20 Oct 2014

To pay by direct deposit into our account the number is Westpac 03-1525-0003954-000.
Please use your last name and invoice number in the reference fields.
When paying by cheque, please make out to Ruapehu REAP.
Please complete this payment advice, detach and post to the address provided.

FILE COPY

PAYMENT ADVICE

To: Ruapehu REAP Inc
P O Box 86
Taihape
4742

Customer The Quilted Gumboot
Invoice Number INV-1640
Amount Due 68.10
Due Date 20 Oct 2014
Amount Enclosed

Enter the amount you are paying above

Proforma # 12803501

WENTWORTH DISTRIBUTORS NZ LIMITED

WENTWORTH DISTRIBUTORS NZ LIMITED

Date 16-Sep-2014

PO BOX 13176

ONEHUNGA

AUCKLAND

Ph. 64-9-6340601

Fax. 64-9-6345674

Email wph@naturallywornnz.com

Account # 333609

Cust Order #

Order # 128035

Deliver To :

THE QUILTED GUMBOOT
6 TUI STREET
TAIHAPE 4720

Stockcode	Description	Qty Ordered	On Backorder	Supply Now	Amount
LY931	LOYAL M/W WOOL DK 931	1.00	0.00	1.00	\$30.00
LY934	LOYAL M/W DK WOOL 934	1.00	0.00	1.00	\$30.00
LY941	LOYAL M/W DK WOOL 941	1.00	0.00	1.00	\$30.00
LY943	LOYAL M/W DK WOOL 943	1.00	0.00	1.00	\$30.00

Sub Total 120.00
GST 18.00
Total \$138.00

used 2 X

but I donated some pkts

PAPERPLUS

Select

RMV11.2

5/07/2014

Tax Invoice

National Army

MUSEUM

Paper Plus Select Taihape

C. Renwicks
Tax Invoice (incl GST) GST # 41-273-097
Operator cr T111 2
Date 16/01/15 09:10 Tr# 960239720

A.B.N.:049-605-471
Hassett Drive
Waicuru 4861
Ph: 06 3876 911 Fax: 06 3876 319
Served By Marilyn

Docket No. Date Time
139577 5/07/2014 14:16

THE QUILTED GUMBOOT

Code Qty Price Disc % Extn

Description Ext.
* GALLIPOLI PIN 20.00 x 1 \$20.00
* MEMORIAL WHITE CROSS-lapel pin
10.0001 x 1 \$10.00

Total (incl GST of \$ 0.00) \$ 0.00

Subtotal \$30.00
Total inc. GST \$30.00
No. of Items (2)
* Indicates taxable item

PAPER PLUS SELECT
83 HAUTAPU STREET
TAIHAPE

Payment Details:
Cash \$30.00
(duplicate copy, printed 5/07/2014)

-----EFTPOS-----
TERMINAL 35526501 TRAN 010799
TIME 16JAN 09:18 ACCT CHEQUE
EFTPOS0075
Visa Debit
RID: A000000003
PIX: 1010
AUTHORISATION
PURCHASE NZD14.99
TOTAL NZD14.99

Talk to the Museum staff for more
information on the benefits of joining
our Friends Programme or visit our
website at www.armymuseum.co.nz

ACCEPTED

CUSTOMER COPY
EFTPOS \$ 14.99

Thank you for choosing Paper Plus

Sign _____
Fly Buys Number:

Book 9
Pen

white crosses
used in
quilts

THE QUILTED GUMBOOT
TUI ST
TAHAPU

GST NO 035-269-533

13-04-2015 14:22
REG C01 131099

1.5 X 08.00
FABRIC padding 12.00
2 X 06.15
FABRIC backing 12.30
2 X 04.50
FABRIC binding 9.00
0.5 X 04.50
FABRIC cord 2.25
2 X 01.50
FABRIC clasp 3.00
FABRIC fasteners 25.00
1 X 04.11
FABRIC cotton 4.11
CA 67.66

THE QUILTED GUMBOOT
TUI ST
TAHAPU

GST NO 035-269-533

13-04-2015 13:30
REG C01 131096

knives needles 03.00
15 X 03.00
WOOL 45.00
crotch pads 02.10
WOOL clasp pad 31.50
2 X 01.90
WOOL 3.80
1 X 03.00
FABRIC 3.00
1 X 02.75
FABRIC 2.75
2 X 04.00
FABRIC 12.00
1 X 023.00
FABRIC 23.00
CA 121.05

THE QUILTED GUMBOOT
TUI ST
TAHAPU

GST NO 035-269-533

13-04-2015 14:29
REG C01 131101

2 X 09.99
FABRIC 19.98
1 X 09.99
FABRIC 9.99
1 X 06.00
FABRIC Steam sealer 6.00
2.5 X 06.15
FABRIC backing 15.36
2.5 X 04.50
FABRIC backing 11.25
0.8 X binding 04.50
FABRIC 3.60
FABRIC clasp 3.00
FABRIC cotton 4.11
3 X 01.50
FABRIC 3 slides 4.50
CA 77.81

THE QUILTED GUMBOOT
TUI ST
TAHAPU

GST NO 035-269-533

13-04-2015 14:20
REG C01 131097

1 X 04.50
FABRIC top 4.50
1.5 X 06.15
FABRIC backing 9.23
0.5 X 05.95
FABRIC backing 2.98
0.5 X 04.50
FABRIC steam sealer 2.25
1 X 04.11
FABRIC cotton 4.11
CA 23.07

10 pairs
needles
for Area
school children

03-09-2014 17:51
REG C01 129829

10 X 05.00
CA 50.00
50.00

incl GST.

RECEIPT

Date 25/3/15

85204E

Received from The Quilted Gumboot

The sum of twenty dollars

With thanks

Eftpos

Cheque

Cash

20-

Total

20-

BLUSH FLORIST

Hautapu St, P.O. Box 14

Tahape 4720

T. No:40-732-735

COLLINS 45 DL

RECEIPT

Date 16/3/15

852042

Received from Quilted Gumboot

The sum of twenty dollars

2029c supplies cents

With thanks

Eftpos

Cheque

Cash

20-

BLUSH FLORIST

Hautapu St, P.O. Box 14

Tahape 4720

T. No:40-732-735

- Knitting needles
- crochet hooks
- darning needles
- sewing machine
- sewing needles
- Quilting needles
- 2 pks black buttons
- 1 large pkt small safety pins
- Bodale

White
CROSS
Quilt

Feathered
CLOAK

R.S.A
Quilt

Plastic
Firm used in
breaths.

Fast wire
breaths

TC
THE WOOL COMPANY

The Wool Company
 Phone 64-6-388-1564
 You were served by Cathy Webb
 GST# 11-668-429
 Donket 01 227098 4/08/2014 4:05 p.m.

Customer : 27411 - Pauline Baddeley



* 2 7 4 1 1 *

Sale

20144195	20 @ \$16.00	\$320.00
Utiku 8ply Red		
003 Red Size 27		
Special		\$140.00

Sale Total \$180.00

Includes GST of \$23.48

Balance Due \$180.00

Eftpos *****0075
 Purchase \$180.00

THE WOOL COMPANY
 TOREA ST
 UTIKU-TAIHAPE

-----EFTPOS-----
 TERMINAL 23356001 TRAN 004516
 TIME 04AUG 16:04 ACCT CHEQUE
 EFTPOS ...0075

Visa Debit
 RIO: A000000003
 PIX: 1010
 AUTHORISATION
 PURCHASE NZD180.00
 TOTAL NZD180.00

ACCEPTED
 DUPLICATE RECEIPT

 MERCHANT COPY



* 1 0 2 2 2 7 0 9 8 *

Thank you for your custom.

TABLED DOCUMENT

Tabled at Creative Communities

On 25 November 2015

RECEIVED

10 NOV 2015

To: SW
File: 3-GF-3.3
Doc: 15 1318

Creative Communities Scheme
Project completion Report form



All recipients of funds from the Creative Communities Scheme must complete this form within two months after their project is completed.

If you do not complete and return this form you will not be eligible for future funding through this scheme.

Please return the completed form to –
Rangitikei District Council
Attn: Samantha Whitcombe
Private Bag 1002
Marton
4741

OK

1. Project title/grant number	<u>The Quilt Show</u>
2. Name of applicant	<u>Rangitikei Country Quilters</u>
3. Name & location of	<u>Nga Tawa Events Centre Nga Tawa Diocesan School Calico Lane, Marton.</u>
4. Date of Project	<u>Saturday 3rd + Sunday 15th October 2015</u>
5. Amount received from the Creative Communities scheme	<u>\$ 800-00</u>

6. Please give details of how the money was spent. Please account for both the Creative Communities Scheme funding and your own financial contribution to the project.

Project Costs

Item	Detail	Amount
e.g Hall Hire	e.g 3 days hire at \$100.00 per day	e.g \$300.00
Raffle	most items for raffles were donated	\$ 121-52
Fabric	For display	\$ 217-90
Rods	For hanging quilts on	\$ 408-21
Challenge	Rosettes, prizes, judge's fee	\$ 680-69
Opening Night	Food & beverages	\$ 274-38
Advertising	Newspapers road signs etc	\$ 967-11
Rent	Art Centre for meetings etc	\$ 30-00
Sales	To pay member for item sold	\$ 40-00
Venue hire	For hire of Event Centre Thurs - Sunday	\$ 800-00
Guest Exhibitors	Vouchers for travel, accommodation	\$ 160-00
		\$
		\$
A : Total Cost		\$ 3700-14

* OK

Project Income

Item	Detail	Amount
e.g Ticket Sales	e.g 250 tickets at \$15 per ticket	e.g \$3750.00
		\$
Grant	Creative Communities Scheme -	\$
	Venue Hire	\$ 800-00
Entry	Visitors through exhibition \$5 pp.	\$ 1924-50
Raffle	\$1 per ticket or 6 for \$5.00	\$ 1318-80
Sale	Sale of one item on show	\$ 40-00
		\$
		\$
		\$
		\$
		\$
B : Total Income		\$ 5083-30

7. How many people?

- Write down the numbers of people that actively participated
- Write the number of people that attended (such as the audience)

80

584

8. Highlights: Give a brief description of the highlights of your project. Also describe what didn't work so well and what you might do differently next time?

Our biennial exhibition was held in a new venue, which allowed everything to be showcased under one roof. It enabled us to display the variety and talent of our members in the work that they have completed since our last exhibition. We also had on display for the first time in the Rangitikei, two National Juried Travelling Exhibitions. The Guest Exhibitors included two nationally recognized quilters and a local exhibition of miniature steam engines which interested a lot of husbands, visiting with their quilting wives. The visiting merchants were selling quilt related products not available locally and a local person selling jams, pickles, preserves. The local Girl Guides stepped in a fortnight before the exhibition, to do the catering, as the group we had organised were not able to fulfill their obligations. This was a fund raising exercise for the guides to enable them to attend their ~~jamboree~~ ^{jamboree} next year. In future we would have more signage for parking. Although there was ample parking, it was not visible from the main door/drop off area. We could have one person designated to direct traffic. We would also need dis-abled parking areas. We realised when the lift was out of order that we had to make alternative arrangements for disabled people to have access to food and drink - we were able to do this, but they were not able to view the quilts on display upstairs. This exhibition was the culmination of two years hard work and planning by our dedicated sub committee.

9. How did your project benefit your community?

Quilters travel great distances to visit quilting exhibitions - many in groups or buses, and presumably they spend time and money in the district while here.

As this was the first time that we had used Nga Tawa Kōwhiri Centre as a venue, so it was beneficial to both organisations. Many visitors both local and from out of the district had not been to the Centre previously.

The Girl Guides provided a wonderful cafeteria service, and because of this work, they will be able to attend their jamboree.

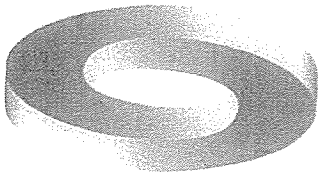
We have a reciprocal agreement with Marton Arts and Crafts Centre about borrowing equipment, props etc and this is very beneficial to both parties. This also applies to Kowhai Quilters in Feilding from whom we borrowed quilt stands.

It was a wonderful venue to display the work of our members and guest exhibitors. As the work was produced by new and experienced quilters, we hope that it may inspire more people to take up this wonderful hobby/craft.

Thank you to the Creative Communities Scheme for their generous grant to help make all this possible.

This report was completed by:

Anne Bramley - Treasurer.



T C D T

Taihape Community Development Trust

Taihape Town Hall
P O Box 25
Taihape 4742
Phone: + 64 6 388 1307
Fax: 64 6 388 1919
Email: info@taihape.co.nz
Website: www.taihape.co.nz

RECEIVED

22 MAY 2015

To: SHV
File: B-GF3-2
Doc: 15-2391

20 May 2015

Samantha Whitcombe
Rangitikei District Council
Private Bag 1102
Marton 4741

TABLED DOCUMENT

Tabled at Creative Communities

On 25 November 2015

Dear Samantha,

Re: Accountability report - \$320.00 – facilitator for creative workshops

I enclose herewith our completed project report form for the above funding granted to TCDT last year.

I trust this is satisfactory and thank the Creative Communities Scheme for this assistance. Without such support projects like this just couldn't happen in Taihape.

Regards,

Elizabeth Mortland
Manager

Project report form



Creative Communities Scheme

If you do not complete and return this form you will not be eligible for future funding through the Creative Communities Scheme.

All recipients of funds from the Creative Communities Scheme must complete this form within two months after their project is completed.

Please return the completed form to –
Samantha Kett
Governance Administrator
Private Bag 1102
Marton 4741

1. Project name: Facilitator for creative workshops
2. Name of applicant: Taihape Community Development Trust
3. Location of project: Taihape + district
4. Date of project: 11/2 - 2/3/15
5. Amount received from the Creative Communities Scheme: \$ 320.00

6. Please give details of how the money was spent. Your contribution to the project and the Creative Communities Scheme funding you received must be accounted for.

Wages/Travel - 20 hrs x \$16.00	OK ✓	\$ 320.00
Workshop materials		\$ 300.00
		\$
		\$ 620.00

7. Please provide details about the project or activities that were supported by the Creative Communities Scheme. Explain what was successful, and what didn't work so well.

4 workshops ^{each} (2-3 hrs): Older + Bolder / Senior Citizens (11/2); Mainly Music (19/2); Pawa (23/2); Papanui Junction School (incl 1x Work + Income) on 2/3.
 The following organisations were visited to explain project, encouraged to participate, had resources provided +/or were set up - The Hutt, 2x Kohanga, Day Care, schools (TAS, Mangaweka, Motara), Playcentre.
 All schools were contacted.

8. Give a brief description of the highlights of your project, including the number of participants.

Involvement of Older + Bolder / Senior Citizens - this was a new group involved in the Gumbool Day art competitions - a knitted gumboot!!
 O+B x 10+; Pawa x 10; Mainly Music x 10; Papanui x 10 (41 tot.)
 1st 2nd 3rd winners on Gumbool Day were workshop attendees. Entries again increased - 400+
 + ?? from organisations visited (as above)

9. How did your project benefit your community?

Attendees thoroughly enjoyed the workshops - all have booked in for next year! Great feedback received from O+B.
 Participation in Gumbool Day art competitions is increased by providing workshops +/or visiting schools/organisations
 Great participation in workshops by the youngest + the eldest in town.

10. What, if any, are the next steps (for your project, for you and/or for the people involved)?

Similar workshops are planned for next Feb/Mch.

11. This report was completed by:

Name: Elizabeth Mortland

Address: PO Box 25
Tairāhapa 4742

Date: 20/5/15

Phone: (06) 388 1307

Email: elizabeth@tairahape.co.nz

RECEIVED

04 APR 2016

To: SW
File: 3-CF-3-3
Doc: 16 0116

Creative Communities Scheme Project completion Report form



All recipients of funds from the Creative Communities Scheme must complete this form within two months after their project is completed.

If you do not complete and return this form you will not be eligible for future funding through this scheme.

Please return the completed form to –

Rangitikei District Council
Attn: Samantha Whitcombe
Private Bag 1002
Marton
4741

1. Project title/grant number 152nd TURAKINA HIGHLAND GAMES.
2. Name of applicant TURAKINA CALEDONIAN SOCIETY INC.
3. Name & location of TURAKINA DOMAIN, TURAKINA.
4. Date of Project 30th JANUARY 2016
5. Amount received from the Creative Communities scheme \$2500.00.

6. Please give details of how the money was spent. Please account for both the Creative Communities Scheme funding and your own financial contribution to the project.

Project Costs

PLEASE SEE ATTACHED.

Item	Detail	Amount
e.g Hall Hire	e.g 3 days hire at \$100.00 per day	e.g \$300.00
		\$
		\$
		\$
		\$
		\$
		\$
		\$
		\$
		\$
		\$
		\$
		\$
		\$
		\$
		\$
		\$
		\$
		\$
		\$
		\$
A : Total Cost		\$

Project Income

PLEASE SEE ATTACHED.

Item	Detail	Amount
e.g Ticket Sales	e.g 250 tickets at \$15 per ticket	e.g \$3750.00
		\$
		\$
		\$
		\$
		\$
		\$
		\$
		\$
		\$
		\$
		\$
		\$
		\$
		\$
		\$
		\$
		\$
		\$
		\$
		\$
		\$
		\$
		\$
		\$
B : Total Income		\$

7. How many people?

- Write down the numbers of people that actively participated
- Write the number of people that attended (such as the audience)

463

1200 approx

8. Highlights: Give a brief description of the highlights of your project. Also describe what didn't work so well and what you might do differently next time?

THERE WERE 14 PIPE BANDS IN ATTENDANCE WITH A MIX OF AGES OF PARTICIPANTS. THREE OF THESE WERE YOUTH PIPE BANDS. THE NUMBER OF YOUNG SOLO PLAYERS COMPETING CONTINUES TO GROW. WE WILL NEED TO INCREASE THE NUMBER OF SOLO BOARDS (STAGES) AND JUDGES NEXT YEAR TO ACCOMMODATE THEM ALL.

A HIGHLIGHT OF THE EVENT WAS HAVING THE SCOTS REGIMENT FROM LINTON PRESENT. THEY WERE HELPFUL, A CROWD PLEASER AND FUN TO HAVE AROUND.

WE NEED TO PROVIDE A COVER FOR THE SOBHO DANCING STAGE AS THEY HAD TO RELOCATE TO MARION SCHOOL FOR THE MORNING BECAUSE LIGHT RAIN MADE THE STAGE SLIPPERY.

9. How did your project benefit your community?

THE LOCAL COMMUNITY HAVE WORKED TOGETHER TO STAGE THE HIGHLAND GAMES. IT HAS BEEN A FOCAL POINT WHICH HAS BROUGHT LOCAL BUSINESSES, FARMERS, SCHOOL AND RESIDENTS TOGETHER FOR A COMMON GOAL. THE SCHOOL HAVE BECOME MORE INVOLVED THIS YEAR.

MANY VISITORS FROM OUTSIDE THE REGION COME TO TURAKINA FOR THE WEEKEND SO THERE IS AN INCREASE IN CUSTOMERS FOR LOCAL BUSINESSES ALSO.

THE TURAKINA HIGHLAND GAMES IS SEEN AS AN IMPORTANT EVENT ON THE PIPE BAND CALENDAR AND THE PERFECT PLACE FOR YOUNG PIPERS, DANCERS AND DRUMMERS TO BEGIN THEIR MUSICAL AND DANCING ENDEAVOURS WHILE ALSO HAVING SOME OF THE BEST EXPONANTS IN NEW ZEALAND PRESENT.

This report was completed by:

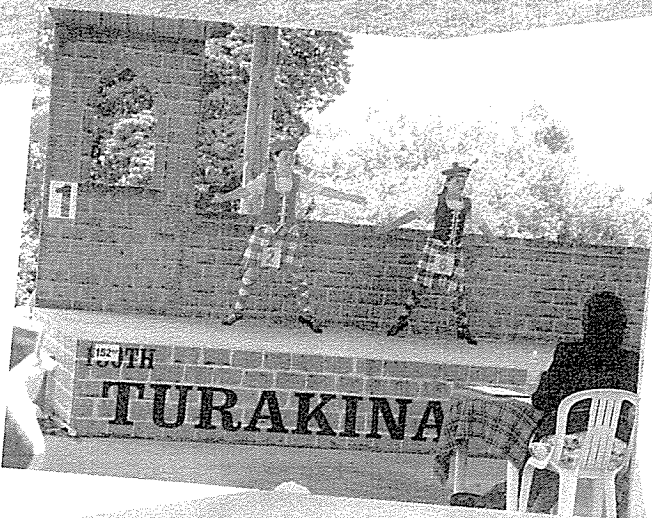
DEBBIE BENSON

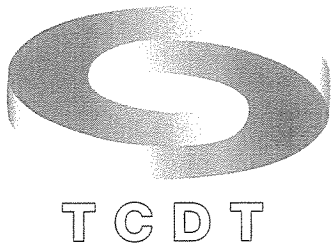
Income & Expenditure for 2016 Highland Games

This is an indication of how the financial side of the games went this year. It is by no means a final result for the Society's 2016 finances. I have also excluded any transactions that were not directly required for the running of the games. This will just give you an idea of how the income and expenditure of the day went.

Income:	2016
Grants: Creative Communities	\$ 2500.00
RDC Events Sponsorship	\$ 2563.00
COGS	\$ 4500.00
Public Trust JBS Dudding Trust	\$ 3000.00
Pipe Band Foundation of NZ	\$ 400.00
Lion Foundation	\$ 1500.00
Total:	<u>\$14463.00</u>
	2016
Dancing entries	\$ 1075.00
Drumming entries	\$ 311.50
Piping entries	\$ 1400.00
Band entries	\$ 1205.00
Field Events	\$ 270.50
Gate takings	\$ 8530.00
Camping	\$ 185.00
Stalls	\$ 845.00
Donations & Sponsorship	\$ 160.00
Bar-b-que dinner	\$ 905.00
Raffle	\$ 173.00
Misc. income	\$ 108.35
Souvenirs	\$ 90.00
Total:	<u>\$ 15258.35</u>
TOTAL INCOME	\$ 29721.35

Expenses:	2016
Medals	\$ 1520.01
Stationary	\$ 289.07
Printing	\$ 774.35
Judges costs	\$ 3126.22
Prizes	\$ 3962.85
Lions (Marton)	\$ 400.00
Advertising	\$ 2878.18
Power	\$ 228.91
First Aid	\$ 275.00
Rubbish Bins	\$ 599.96
Port-a-loos	\$ 2248.45
PA System	\$ 225.00
Catering for Set Up Crews	\$ 237.00
Catering Costs	\$ 1208.36
Repairs	\$ 200.00
Dancing Costs (Pipers & Thistle Caledonian)	\$ 240.00
Turakina School	\$ 100.00
Ceilidh Entertainers	\$ 1300.00
Misc.	\$ 604.12
Marquee & table, chairs hire	\$ 5948.88
Signs	\$ 796.38
Scholarships	\$ 300.00
Replacement Trophy	\$ 226.60
Total:	\$ 27689.34
Indirect Costs:	
Memberships	\$ 206.11
Insurance	\$ 1018.35
Web Site Design & update	\$ 172.44
Total:	\$ 1396.90
TOTAL EXPENSES	\$ 29086.24
2016 INCOME LESS EXPENSES =	\$ 635.11



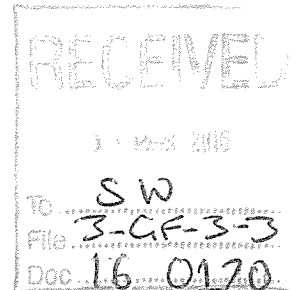


Taihape Community Development Trust

Taihape Town Hall
P O Box 25
Taihape 4742
Phone: + 64 6 388 1307
Fax: 64 6 388 1919
Email: info@taihape.co.nz
Website: www.taihape.co.nz

30 March 2016

Samantha Whitcombe
Rangitikei District Council
Private Bag 1002
Marton 4741



Dear Samantha,

Re: Creative Communities funding – Gumboot Day 2016 Workshops

Thank you for the funding granted the Trust to run art workshops for the Gumboot Day art competitions.

Enclosed is the completed Project completion Report form, together with photos from a couple of the workshops and of the Gumboot Day display.

You will notice that \$4.00 has been added to the cost of coordination of other participants over and above the three hours allocated. This means that the total \$225.00 was spent on this project.

I trust this is satisfactory, and again thank Creative Communities for this funding.

Regards,

Elizabeth Mortland
Manager

Creative Communities Scheme Project completion Report form



All recipients of funds from the Creative Communities Scheme must complete this form within two months after their project is completed.

If you do not complete and return this form you will not be eligible for future funding through this scheme.

Please return the completed form to –

Rangitikei District Council
Attn: Samantha Whitcombe
Private Bag 1002
Marton
4741

1. Project title/grant number	Gumboot Day 2016 Workshops
2. Name of applicant	Tairāpe Community Development Trust
3. Name & location of	Gumboot Day 2016 Workshops
4. Date of Project	Saturday 12 March 2016
5. Amount received from the Creative Communities scheme	\$225.00 + GST

6. Please give details of how the money was spent. Please account for both the Creative Communities Scheme funding and your own financial contribution to the project.

Project Costs

Item	Detail	Amount
e.g Hall Hire	e.g 3 days hire at \$100.00 per day	e.g \$300.00
		\$
Wages	4 workshops x 2.5 hrs x \$17 ph - Mainly Music/Papanui Junction School/Playcentre/Haua	\$ 170.00
		\$
		\$
		\$
Wages	Coordination of other participants - 3 hrs x \$17 = \$51 + \$4 - Motai Puka Te Kohanga Reo/ Childcare Centre/TAS/Matarua School/ Tairoa/Mangaweka/Maawhango/ St Josephs	\$ 55.00
		\$
		\$
		\$
		\$
A: Total Cost - Creative Communities		\$ 225.00
	1 ream x A3 paper	27.99
		<u>\$ 252.99</u>

Project Income

Item	Detail	Amount
e.g Ticket Sales	e.g 250 tickets at \$15 per ticket	e.g \$3750.00
		\$
		\$
		\$
		\$
		\$
		\$
		\$
		\$
		\$
		\$
B: Total Income		\$

7. How many people?

Papanui 14 + 2
 Wairiki 8 + 12
 Music
 Playcentre 6 + 7
 2004 10 + 5
 38 + 26

Write down the numbers of people that actively participated

$$38 + 362 = 400$$

Write the number of people that attended (such as the audience)

$$\frac{26}{64}$$

8. Highlights: Give a brief description of the highlights of your project. Also describe what didn't work so well and what you might do differently next time?

- * 400 entries received, including 2 classes from Tauniko School, Tauranga.
- * Appreciation by attendees' (parents/teachers) of the annual workshops
- * Improved standard of work
- * First time workshop at Playcentre
- * Introduction of certificates for 0-2 yrs, suggested by Taitepe Childcare Centre
- * Having artworks cut out + displayed in a white tent - looked very professional.

Needs to be organized early - dates need to be booked in November.

9. How did your project benefit your community?

Having children's art work displayed publicly - the only occasion in Taitape. This gives the children a sense of pride & belonging - they are so proud to show mum & dad their "masterpiece" hanging in the tent - & they find it so quickly!

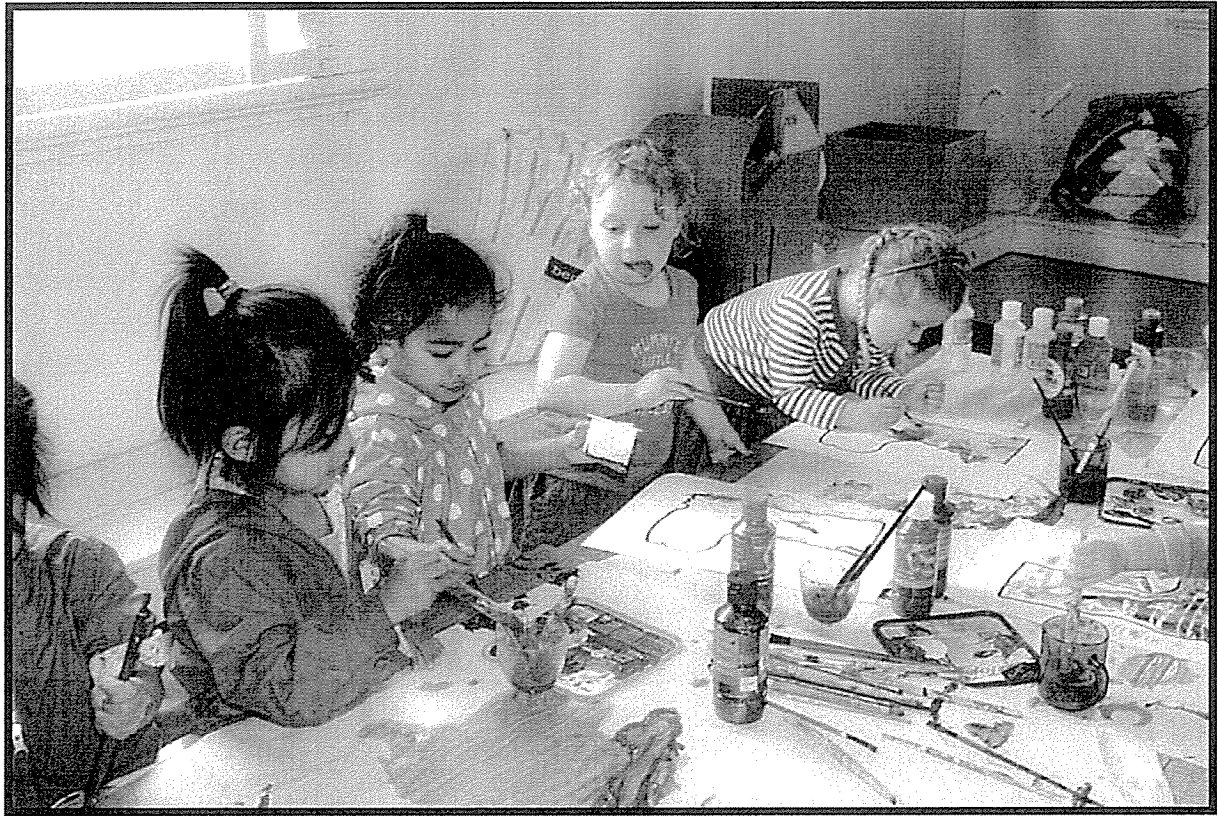
This project is another avenue to get people involved in Gumbast Day, & enhances people's sense of belonging to the community.

This report was completed by:



Elizabeth Mortland
Manager
TCST

Gumboot Day 2016



Gumboot Day 2016



APPENDIX 3

Creative New Zealand: Creative Communities Scheme

Summary Report Form for April 2016

Funds Available: \$7,993.16

Total of Funds Requested: \$16,811.31

Name of Applicant	Ethnicity of Applicant [note 1]	Purpose of Grant	Funding Criterion [note 2]	Artform Code [note 3]	Activity type [note 4]	Cultural tradition [note 5]	Total Cost of Project \$	Amount Raised \$	Amount Requested \$
Bulls and District Community Trust	NZE	Wear-a-bull Arts 2016 costs of staging the event in August	C1, C2, C3	CA	CP	E/M	\$5,700.00	\$4,090.00	\$2,080.00
James Cook School	NZE/M/P I/A	Mural to be completed by the School Art Club and community artists	C3	VA	CP	O	\$5,000.00	\$0.00	\$3,951.32
Marton and District Pipe Band	NZE / M	Tuition fees for three pipe band disciplines Tutorial fee for 2 youth members to attend summer school in Christchurch	C3	MU	CP	E	\$2,000.00	\$0.00	\$2,000.00

Note 1: Ethnicity of Applicant

NZE	New Zealand/European
M	Maori
PI	Pacific Islander
A	Asian
MELAA	Middle Eastern/Latin American/African
O	Other

Note 2: Funding Criterion

C1	Participation
C2	Diversity
C3	Young people

Note 3: Artform code

CA	Combined Arts
CR	Craft/object art
DA	Dance
FL	Film
LT	Literature
MA	Maori Arts
MU	Music
PA	Pacific Arts
TH	Theatre
VA	Visual arts

Note 4: Activity type

CO	Creation only
CP	Creation & presentation
PPR	Presentation only (Performance)
PEX	Presentation only (Exhibition)
WRK	Workshop

Note 5: Cultural tradition

E	European
M	Maori Arts
PI	Pacific Arts
A	Asian
MELAA	Middle Eastern/Latin American/African
O	Other

Name of Applicant	Ethnicity of Applicant [note 1]	Purpose of Grant	Funding Criterion [note 2]	Artform Code [note 3]	Activity type [note 4]	Cultural tradition [note 5]	Total Cost of Project \$	Amount Raised \$	Amount Requested \$
Marton Country Music Festival	NZE	Staging the event in January 2017	C1	MU	PPR	E	\$50,641.00	\$33,500.00	\$5,000.00
Marton Players Inc	NZE	Putting on two one act plays during July	C1	TH	CP	E/M/PI/A/MELAA/O	\$2,278.00	\$5,400.00	\$1,000.00
Samoan Community Support Committee	PI	Performances as part of a celebration of Samoan Independence Day	C1, C2, C3	DA	PPR	PI	\$5,017.50	\$3,1600.00	\$1,857.50
Virginia Warbrick	MZE/M	TAH180 – the hole in the ground	C1	MU	PPR	E/M/O	\$1,282.49	\$360.00	\$922.49

Note 1: Ethnicity of Applicant

NZE New Zealand/European
M Maori
PI Pacific Islander
A Asian
MELAA Middle Eastern/Latin American/African
O Other

Note 2: Funding Criterion

C1 Participation
C2 Diversity
C3 Young people

Note 3: Artform code

CA Combined Arts
CR Craft/object art
DA Dance
FL Film
LT Literature
MA Maori Arts
MU Music
PA Pacific Arts
TH Theatre
VA Visual arts

Note 4: Activity type

CO Creation only
CP Creation & presentation
PPR Presentation only (Performance)
PEX Presentation only (Exhibition)
WRK Workshop

Note 5: Cultural tradition

E European
M Maori Arts
PI Pacific Arts
A Asian
MELAA Middle Eastern/Latin American/African
O Other