



Policy/Planning Committee

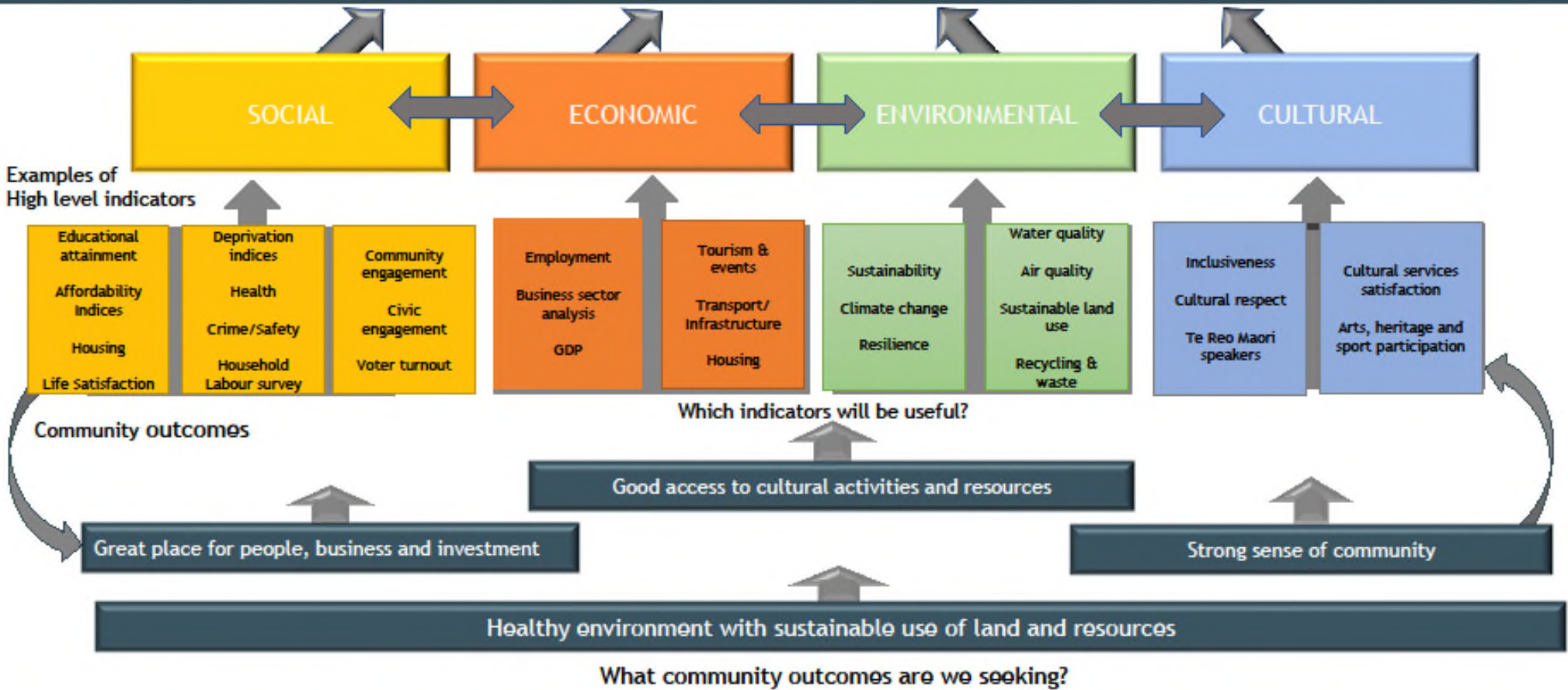
Priorities for 2020

- ▶ Community Well-being
- ▶ Climate change
- ▶ Policy framework
- ▶ Bylaw considerations
- ▶ Engagement with other organisations
- ▶ Emergency management and community resilience

Community well-being

- ▶ The four aspects of Well-being are:
 - ▶ Social
 - ▶ Economic
 - ▶ Environmental
 - ▶ Cultural
- ▶ The four aspects of Well-being were
 - ▶ part of the 2002 Local Government Act,
 - ▶ reinforced from 2004 by the requirement to develop community outcomes and monitor progress in a separate report,
 - ▶ repealed in 2012
 - ▶ reinstated in 2019 (but without the 2004 prescription over outcomes)

SOLGM Community Well-being Indicator Framework



Well-being Outcomes for each Council

STATE OF THE DISTRICT OF ANYTOWN

The State of the District of Anytown is an annual decision based on information provided by the Council and is intended to provide information to improve the quality of life in the District of Anytown. This includes learning (e.g., economic, social, environmental and cultural). The indicators included in this document reflect the following Council priorities: economic prosperity, quality of life, social and environmental wellbeing. The purpose of this report is to present this results.

POPULATION

1. Overall Population

Anytown has a growing population (between 2014 and 2018 has grown 5.1%).



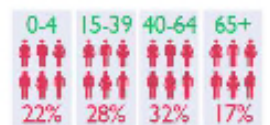
2. Population Projections

Anytown has projected population increases to 2040 by 2040.



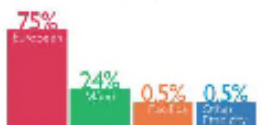
3. Age Proportion

Anytown has a high proportion of people aged 15 to 24, which is similar to other areas of similar size.



4. Ethnicity

Understanding the cultural diversity is important for planning policy and service delivery.



1. The State of the District of Anytown

SOCIAL

5. Total Households

Anytown will have an increased number of households by 2038.



6. Housing Affordability



7. Crime and Safety

Theft and burglary accounts for 84% of total crime in Anytown.



8. NEET

Total of 17% of 15-24 year olds are not in education, employment or training.



ECONOMIC

9. Number of Businesses in Anytown

There are 9,700 businesses and 45,500 employees in Anytown.



10. GDP per capita

\$46,402 AS AT 2016



12. Retail Growth



11. Household Income

The average household income in Anytown



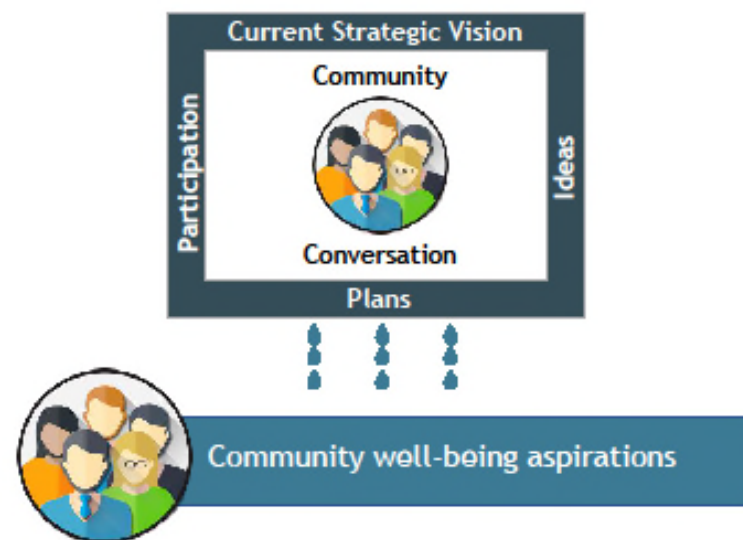
12. Retail Growth (continued)

12. Retail Growth (continued)

Community Well-being - An Overview



STEP 1



STEP 2

Community Well-being Outcome Statements

“There is a safe environment for all”

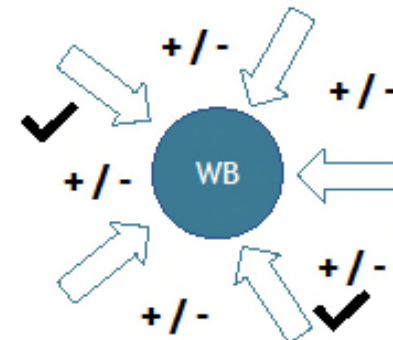
- I feel safe at night walking home
- There is less crime in my local area
- I am not feeling unsafe in my home

STEP 3

What our current state is

“Information (indicators) e.g.

- Quality of life survey
- Council survey
- Crime statistics - Police data
- Community organisation data from other partners



STEP 4


Well-being Community Outcome Prioritisation

If the current state is where you want to be - carry on as is ?
If the current state is behind where you want to be - can we do more - what are the resource implications? Is it a priority for council?
Does the Community want to drop something in favour of more emphasis on another area of Well-being that is more important to them? e.g Dealing with Climate Change.

STEP 5

Do the aspirations of the Community match?

Do the aspirations of the Community match up with the Strategic Objectives of Council and other Partners?
Look at how activities contribute to achieving Strategic Objectives and Community Outcomes
Look at Service Levels - the attributes that the activity influences or provides.
Measure how the impact on attributes will be assessed.
Do targets describe the level of performance sought?
Measurement - did we achieve what we wanted to? Have we progressed the Communities well-being and moved towards meeting the Communities Aspirations? How will we know we have moved the needle.



AND REPEAT

Climate change

- ▶ Government leadership
 - ▶ Policy
 - ▶ Legislation and regulations
 - ▶ Funding
- ▶ Local Government New Zealand's position
- ▶ Risk profile
 - ▶ Coastal communities
 - ▶ Storm events
- ▶ Local leadership opportunities

Policy framework

- ▶ Statutory requirements
- ▶ Council's needs
- ▶ Current policy framework
 - ▶ Visibility
 - ▶ Status
 - ▶ Impact
- ▶ Mandatory reviews
- ▶ Initiated changes or new proposed policies

Bylaw considerations

- ▶ Statutory requirements
- ▶ Council's needs
- ▶ Current bylaws
 - ▶ Status
 - ▶ Impact
- ▶ Mandatory reviews
- ▶ Initiated changes or new proposed bylaws

Engagement with other organisations

- ▶ Rationale:
 - ▶ Leverage
 - ▶ Efficiency
 - ▶ Stakeholder buy-in
- ▶ Collaboration with other councils
- ▶ Central government liaison
- ▶ MoU partners

Emergency management and community resilience

- ▶ Statutory requirements
- ▶ Government direction - new agency (NEMA)
 - ▶ Capability
 - ▶ New emergency information management system
- ▶ Regional (Group) approach
- ▶ Local arrangements