



# Introduction

- Purpose: inform Tangata whenua of project status and seek guidance with proposed Iwi engagement



- Marton WWTP: 100% discharge to Tutaenui Stream
- Bulls WWTP: 100% discharge to Rangitikei River



Centralisation of the WW for Marton and Bulls -  
Construction of the pipeline: completed



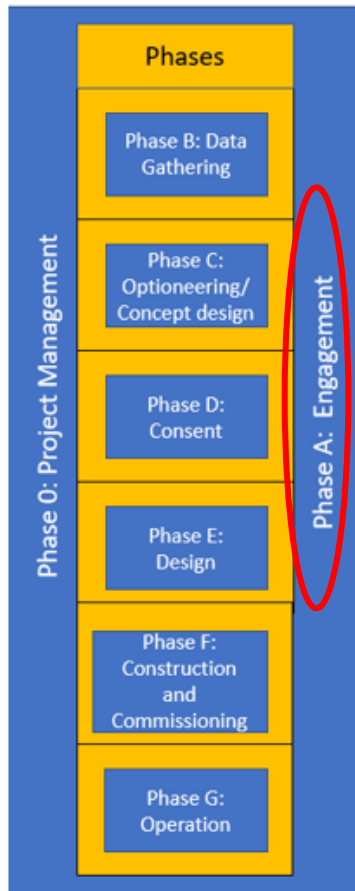
RDC has engaged LEI to assist with implementing long term sustainable wastewater facilities and discharge options.



Engagement with **Tangata whenua** and **Community** essential.



# Project

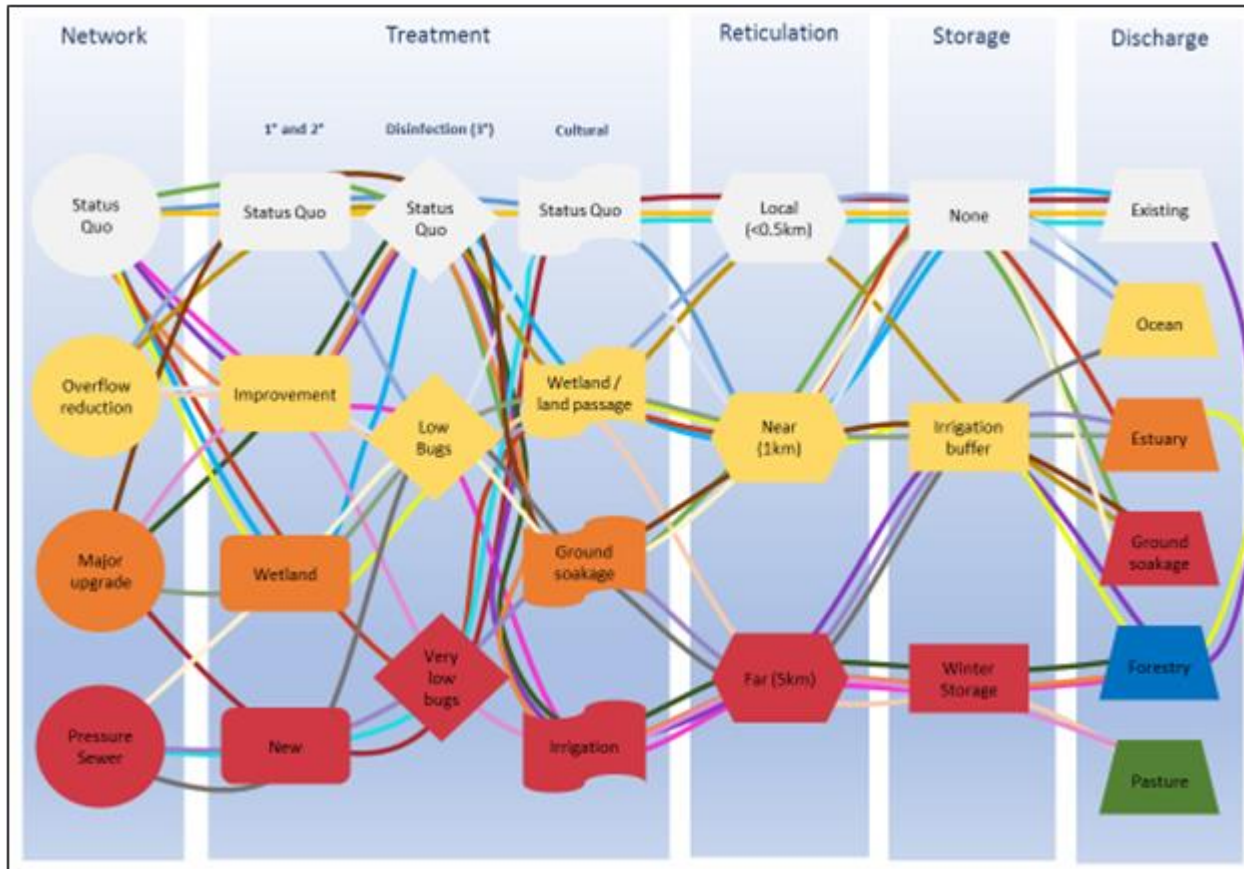


Project has been divided into connected phases

Phase A: Engagement - with **Tangata whenua** and **Community**

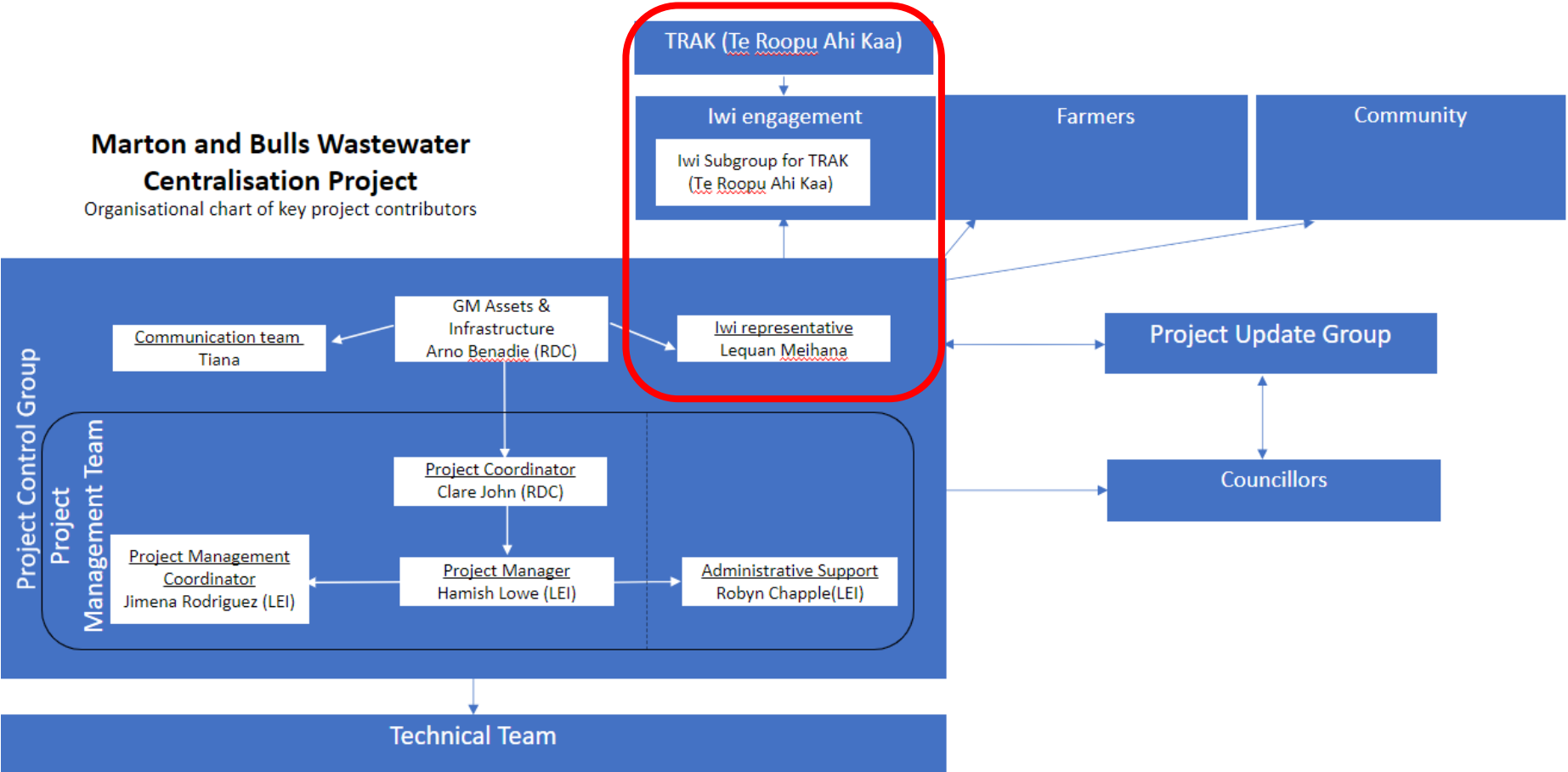
Assists to develop the **best practicable option** (affordable, appropriate and sustainable)

# Wastewater options



# Organisational Chart

**Marton and Bulls Wastewater Centralisation Project**  
Organisational chart of key project contributors



# Tangata Whenua engagement

**TRAK** – to be informed and know what is happening



**Iwi Subgroup** – to represent iwi interests and contribute ideas – know what is going on



## Questions

- Is structure right?
- Who involved/membership in the subgroup?
- What report/information does subgroup and TRAK want from us?
- What is the frequency of reporting and meeting?