

Taihape Community Board Agenda Item Submission Form

Meeting date 10-04-19

Submitted by Ann Abernethy

Agenda item.

Additional bench seat at Taihape Cemetery and replacement seat for Kaka Road.

Description of issue to be tabled

It has been brought to the notice of the Taihape Community Board that a shortage of seating inconveniences people with mobility issues and/or others waiting for a service to begin.

A seat placed at Kaka Road for the convenience of pedestrians was illegally removed .

Resolution sought

That the Taihape Community Board supports the purchase of two Park bench seats from Wanganui Enterprises. These seats have metal framing with treated wood seating and arm rests and are designed to be set in concrete. The total price quoted is \$1,570.00.

Outcome

Additional seating will be provided for the comfort of both members of our Community and visitors to Taihape.

Please ensure that this form is with Michelle Fannin (06 754 9477) no later than five clear working days before the meeting (i.e. close of business on Tuesday the week before the meeting) and at the same time send a copy to Sheryl ().

Taihape Community Board Agenda Item Submission Form

Meeting date 10-04-19

Submitted by Ann Abernethy

Agenda item.

Additional bench seat at Taihape Cemetery and replacement seat for Kaka Road.

Description of issue to be tabled

It has been brought to the notice of the Taihape Community Board that a shortage of seating inconveniences people with mobility issues and/or others waiting for a service to begin.

A seat placed at Kaka Road for the convenience of pedestrians was illegally removed .

Resolution sought

That the Taihape Community Board supports the purchase of two Park bench seats from Wanganui Enterprises. These seats have metal framing with treated wood seating and arm rests and are designed to be set in concrete. The total price quoted is \$1,570.00.

Outcome

Additional seating will be provided for the comfort of both members of our Community and visitors to Taihape.

Please ensure that this form is with Michelle Fannin (the secretary) no later than five clear working days before the meeting (i.e. close of business on Tuesday the week before the meeting) and at the same time send a copy to Sheryl ().

Bench Seats



☆ **Chris - Wanganui Enterprises Inc** <chris@fivestar.org.nz> 15/3/2019 09:53

To laabernethy@xtra.co.nz **Copy** Kerstin - Wanganui Enterprises Inc

▶ 4 attachments View Download

Hi Anne,

Sorry for the delay. I have attached our quote plus drawings of the proposed bench seat. It is designed to anchor into the concrete footing with reinforcing rod. The steel frame is 50 x 25 box section with 100 x 50 box section legs, all steel is hot dip Galvanised after being welded.

Although the timber is treaded radiate and will last for years, we have designed it so the timber can be replaced if needed.

I hope this is what you are looking for and look forward to your feedback and order.

Regards,

Chris Hart
Operations Manager



P: 06 343 7053

F: 06 343 7354

E: chris@fivestar.org.nz (mailto:chris@fivestar.org.nz)

W: [www,Fivestar.org.nz](http://www.Fivestar.org.nz)

41 London Street. PO Box 898, Wanganui 4541, NZ

Kate W.
Comptroller

WANGANUI ENTERPRISES

PO BOX 898
WANGANUI 4540



Phone No: 06 343 7053
Fax No: 06 343 7054
Email : accounts@fivestar.org.nz

Quote

GST Reg. No : 42-144-762

Ship To:

Taihape Community Board
Rangitikei District Council
P O Box 37
Taihape

Bill To:

Taihape Community Board
Rangitikei District Council
P O Box 37
Taihape

Customer Contact No: 063889220

Invoice No: 00017707

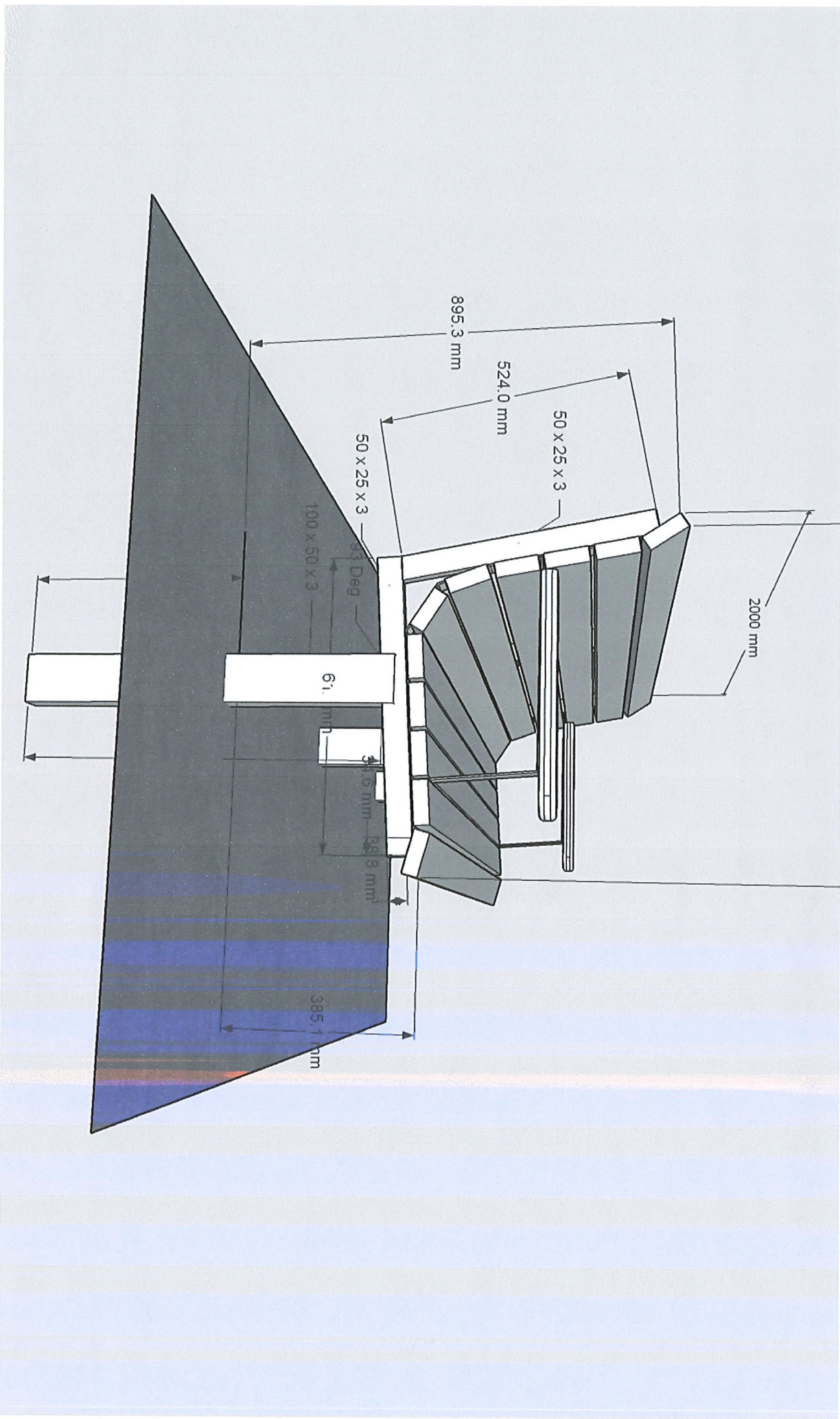
Customer Email: laabernethy@xtra.co.nz

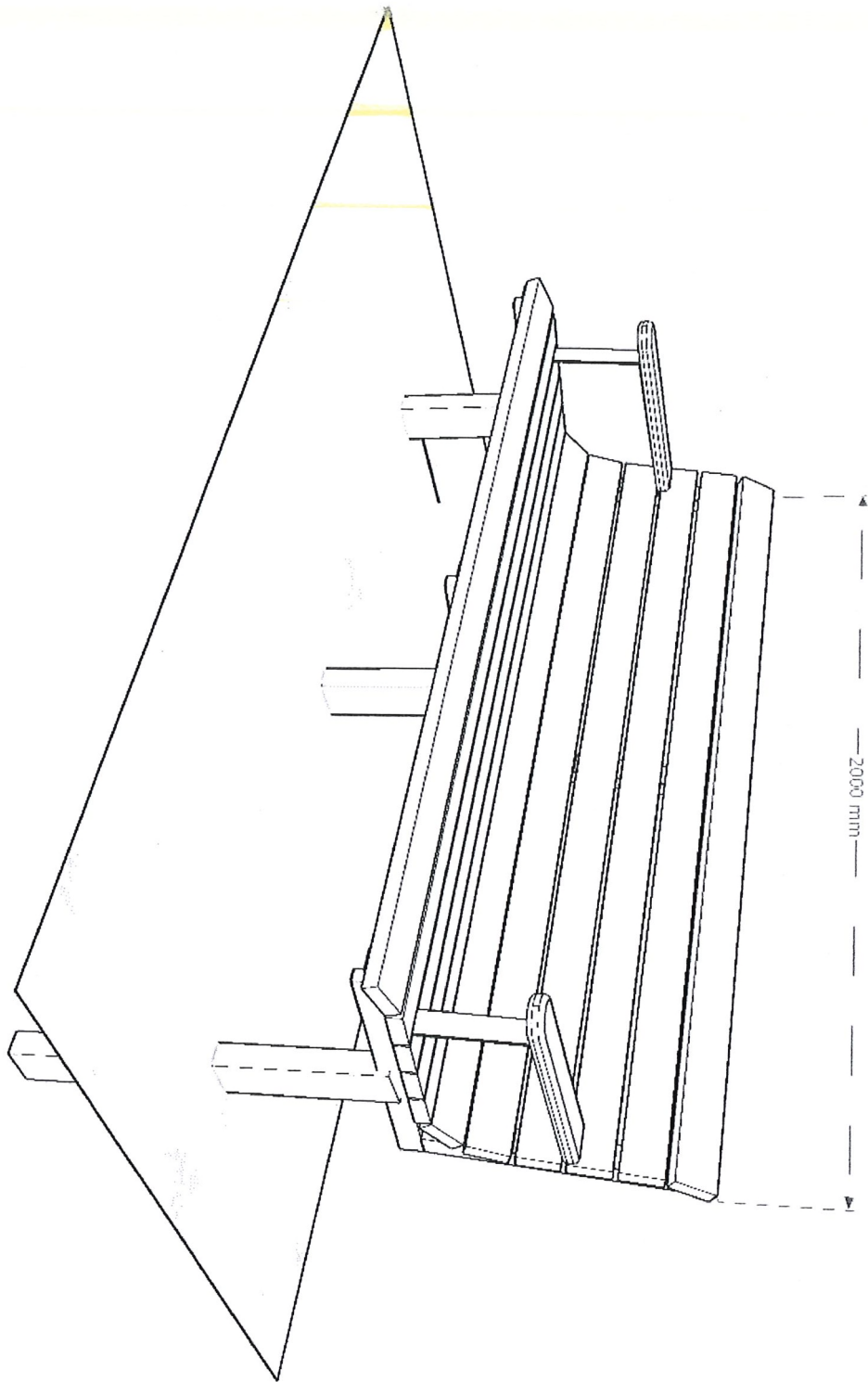
Your Order No.	Ship Via	Ship Date	Date
			14/03/2019

QTY	ITEM NO.	DESCRIPTION	PRICE	DISC%	EXTENDED
2	MiscWood	Park bench with metal framing and treated wood seating and Arm rests. Designed to be set in Concrete.	\$682.61		\$1,365.22
Comment:			Sale Amt.:		\$1,365.22
			GST:		\$204.78
			Total Amt.:		\$1,570.00
			Paid Today:		\$0.00
Terms: Net 20th after EOM			Balance Due:		\$1,570.00

Bank Details: Westpac
Account Name: Wanganui Enterprises
Account Number: 03-0791-0426170-00

The buyer agrees that all goods remain the property of Wanganui Enterprises Trust until payment is received in full. Payment is required by the 20th of the month following the purchase of any goods unless the vendor agrees to any other terms. All Costs incurred in the recovery of overdue funds including but not limited to debt recovery charges and legal fees may be added to the balance of your account.





STRATEGIC PERFORMANCE FRAMEWORK MOU ORGANISATIONS

Partnering Organisation: Mokai Patea Services

Period under review: Work Plan 2018 to 2019

Group of Activities: Community Well-being

- Attracting people to the Rangitikei to live (or to stay living here)
- Contribution to community outcomes: A buoyant District economy, Enjoying life in the Rangitikei

Activity: Economic development and District Promotion

<p>Council's intended Level of Service is to:</p>	<p>Contract with local organisations to provide a website that is a gateway to the District, with links through to more local web pages, and social media opportunities.</p>
<p>Action</p>	<p>Cumulative progress for this period</p>
<p>1. Update the Taihape Community Development Trust on activities, events and programmes to publish through their media (i.e. social media, websites etc.)</p>	<p>Mokai Patea Services has provided information regarding our regular programmes through to Taihape Community Development Trust within the January –March timeframe.</p> <p>Mokai Patea Services also utilises its own communication strategy via facebook, email, bi- monthly panui and also face to face contact within the Taihape Community. This information includes events that are planned within our local community but also initiatives and events that maybe occurring region wide or nationally. As far as providing another avenue or gateway for information to go out District wide, we are certainly providing this opportunity via our own facebook page and have direct links into the many facebook/ websites of local Marae and Runanga that reside within this rohe to ensure that information shared. The following list shows a very small proportion of information that has been fed via our facebook page/emails or panui in this timeframe and items that we have promoted.</p> <p>January (Facebook Reach) Average views per day 336 Peak viewing (one specific event) 923 MPS/Iwi - Waitangi Big Day Out, Mokai Patea Hui A Rohe, Tamariki/Rangatahi Mentoring Local - The Lobby Opening, Taihape AMP Show, Tpe Networking Region– Te Poho O Tuariki opening (Ngati Apa) , Relay for Life (Whanganui), Ratana Celebrations, National Iwi Chairs Forum</p>

	<p>February (Facebook Reach) Average views per day 233 Peak viewing (one specific event) 1166 MPS/Iwi – Te Ra O Nga Tamariki, Moawhango Marae AGM, Whitikaupeka Wananga Local – Ride for Talej, Smear your Mea campaign, RDC Youth Council nominations Region - Relay for Life (Whanganui), Pakaitore Celebrations Te Matatini</p> <p>March (Facebook Reach) Average views per day 136 Peak viewing (one specific event) 857 MPS/Iwi – Mokai Patea Waitangi Claims Hearing week, Land Trust Hui Local – Remembrance Service, “What Matters To You”, Gumboot Day, REAP Harakeke Te Reo Maori Courses Region – Relay for Life (Whanganui)</p>
--	--------------------------------------------------------------------------------------------------------------------------------------------------------------------------------------------------------------------------------------------------------------------------------------------------------------------------------------------------------------------------------------------------------------------------------------------------------------------------------------------------------------------------------------------------------------------------------------------------------------------------------------------------------------------------------

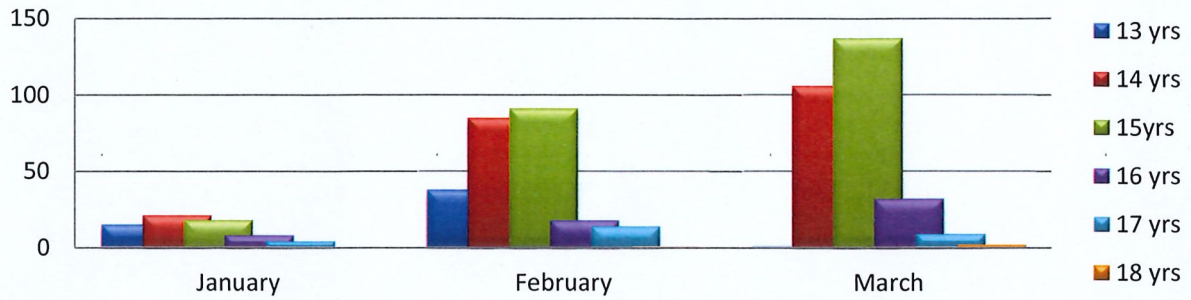
Activity: Community Partnerships

<p>Council’s intended Level of Service is to: Facilitate and lead on a Positive Ageing Strategy that aims to enhance quality of life for older people in the District.</p>	
<p>Action</p> <p>1. To provide an independent welfare services to tenants over the age of 55 years in Councils Taihape based Community Houses.</p>	<p>Cumulative progress for this period</p> <p>Mokai Patea Services works in this area independently from any type of council directed contract or influence. The services and support we provide into this group of kaumatua in the Mokai Patea/Taihape and surrounding districts, contributes into their individual health and wellbeing needs using the following pathways;</p> <ul style="list-style-type: none"> • Registered clients with our service • Weekly Te Roopu Oranga “Sit & Be Fit” programme • Pukatea Wainui Kaumatua Group • Mokai Patea Kaumatua specific projects <p>The organisation would have an average of 200 engagements monthly with local kaumatua/elderly via the pathways shown above.</p>
<p>Council’s intended Level of Service is to: Facilitate and lead on a Youth Action Plan that aims to enhance quality of life for children and young people in the District</p>	
<p>Action</p>	<p>Cumulative progress for this period</p>

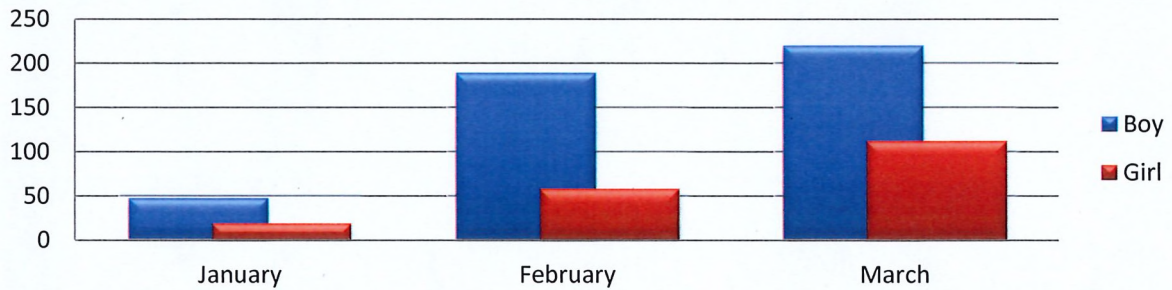
Mokai Patea Services Work plan Report January – March 2019

In the March month there was a total of 338 rangatahi who signed into The Lobby over that 21 day period. On average we had 16 rangatahi sign in on any given day.

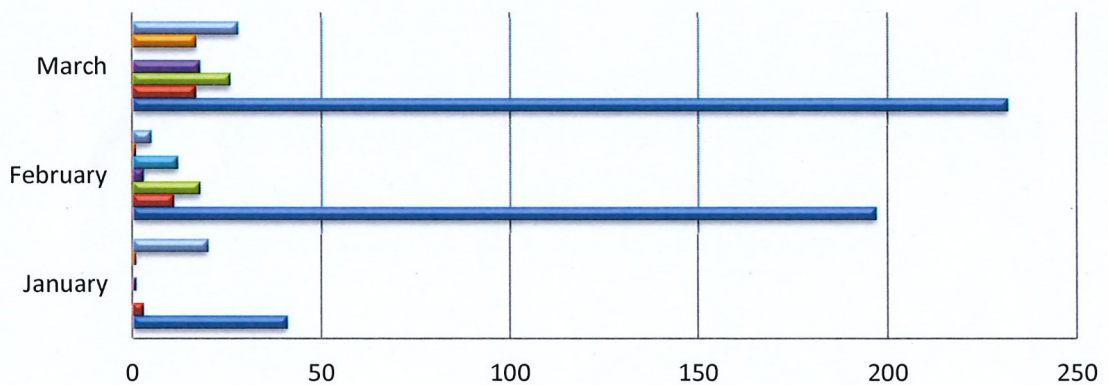
Age Group



Gender



Ethnicity



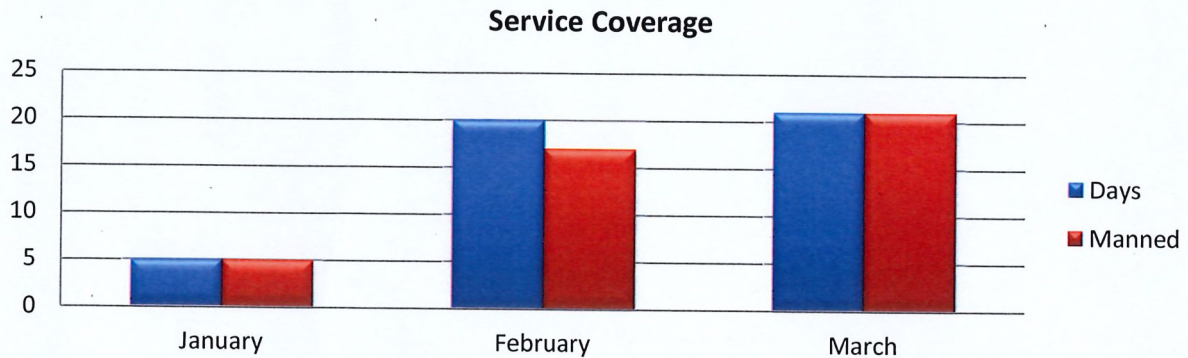
	January	February	March
Not Specified	20	5	28
Other	1	1	17
All Groups		12	
Maori Pacifica	1	3	18
Maori/Pakeha		18	26
Pakeha	3	11	17
Maori	41	197	232

<p>1. To provide staff or an approved person to open and be present in the Taihape Youth zone between the hours of 3-5pm during weekdays.</p>	<p>Appendix attached with information around this action.</p>
<p>2. To encourage Youth to be involved in making submissions to Council regarding Youth Development.</p>	<p>In this timeframe we promoted the RDC Youth Council kaupapa via individual engagements, panui, rangatahi mentoring programme and our own database system. One on One and conversations were had with rangatahi to encourage them into this kaupapa. We are very pleased and proud that one of the rangatahi who is part of our Rangatahi mentoring project was selected as a Youth delegate to the RDC Youth Council. Acknowledgement of their kaha in this kaupapa must also be given to their Mentor who supported them through this process.</p>
<p>3. To meet and collaborate with Councils Strategic Advisor: Youth/Rangatahi in Taihape on a regular basis.</p>	<p>In this timeframe our engagement with the Strategic Advisor (Nardia Gower) has been to provide weekly attendance sheets register via email and also to alert the council of issues/damages that occurred in The Lobby Space.</p>
<p>4. To work with Councils Strategic Advisor: Youth/Rangatahi to explore funding for youth events and programmes</p>	<p>In this timeframe we have had no collaborative discussion to explore funding for youth events and programmes.</p> <p>Mokai Patea Services works in this area independently from any type of council directed contract or influence and has provided Rangatahi/Mentoring programmes under our own umbrella. All resourcing of these projects are provided through us with no direct council contribution.</p>

Mokai Patea Services Work plan Report January – March 2019

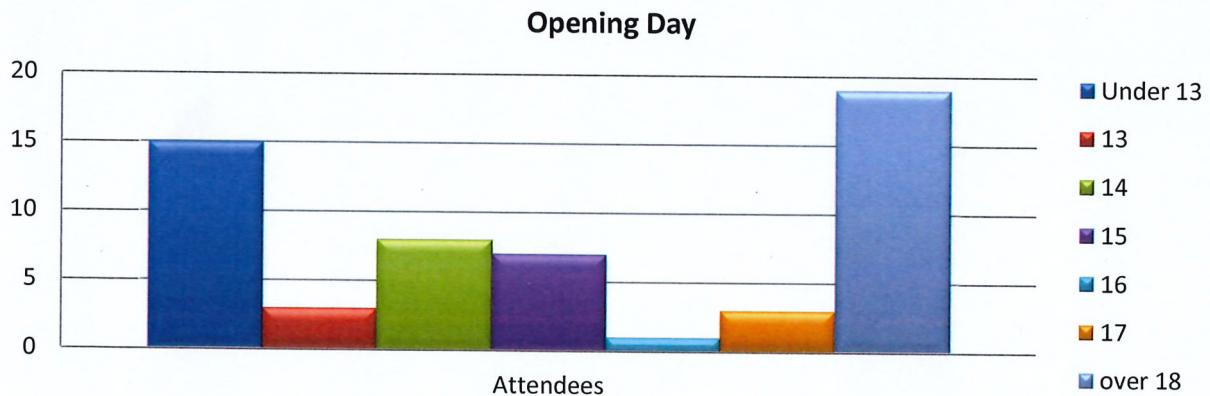
This graph shows the coverage of service provided by Mokai Patea Services since the opening at the main street site on Friday 25th January 2019.

As you will see full coverage was not provided in February as the venue was closed following a water leak that occurred during a major rain downfall. A call was made by the person manning the space at that time to close due to safety concerns and Management made contact with RDC officers and a joint decision was made to close the space until necessary repairs had been completed.



The following graph shows the statistics garnered of individuals who attended the open day on the 25 January 2019;

A total of 53 people signed in on opening day with 22 rangatahi within the target group making up the majority of the attendees. 19 individuals comprising of RDC staff and officials, MPS staff, interested members of the community and other business people in attendance. There was also a good number of younger tamariki who also registered on the day.



Monthly Demographic Statistics

In the January month there was a total of 66 rangatahi who signed into The Lobby over that 5 day period. On average we had 13 rangatahi sign in on any given day.

In the February month was a total of 247 rangatahi who signed into The Lobby over that 17 day period. On average we had 14 rangatahi sign in on any given day.





