



TABLED DOCUMENT

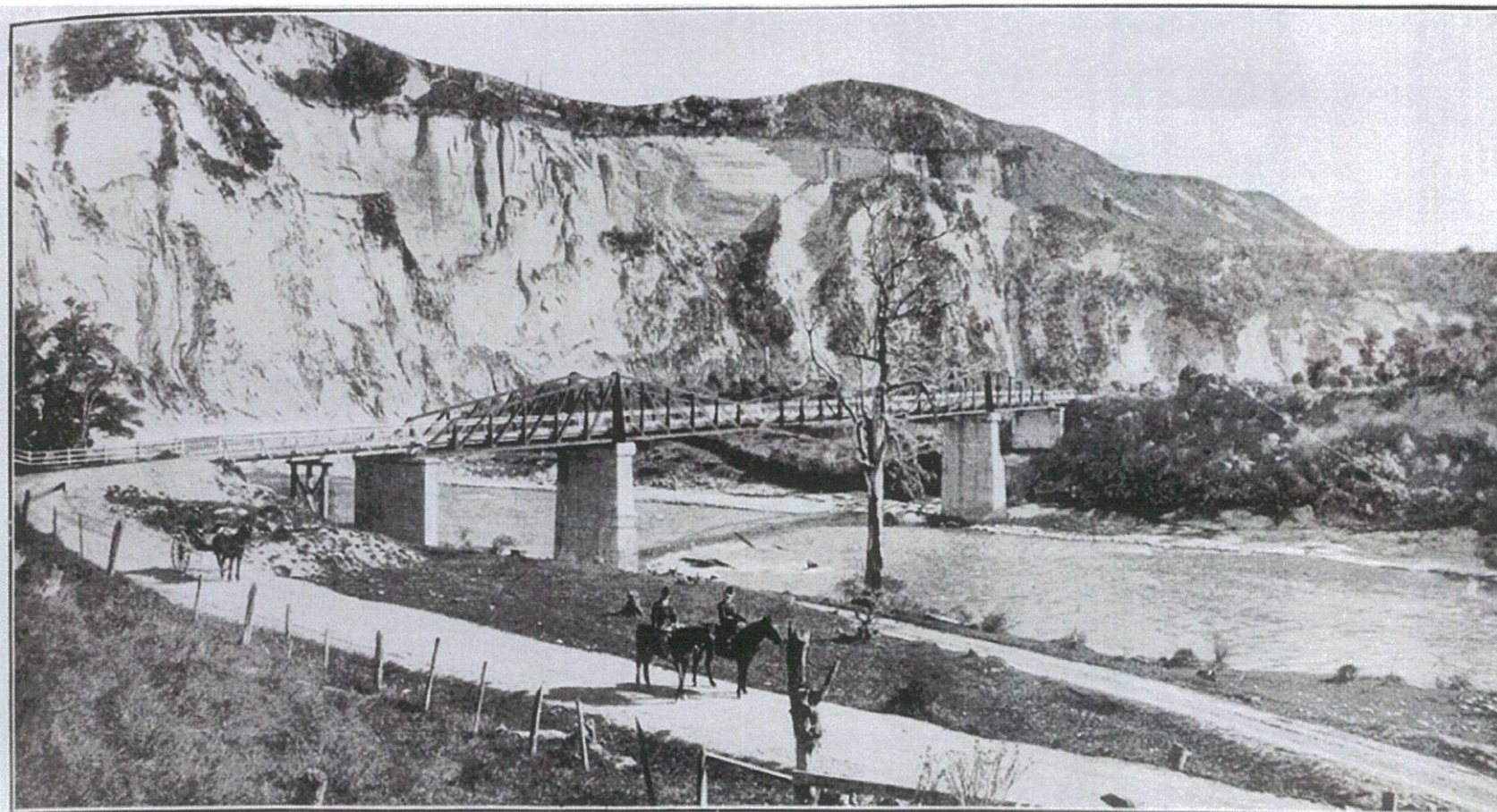
Tabled at TRAK - item 9
on 13 June 2017



Mangaweka Bridge Upgrade



Construction completed 1904



Up until 1992 State Highway 54

31 tonne weight limit



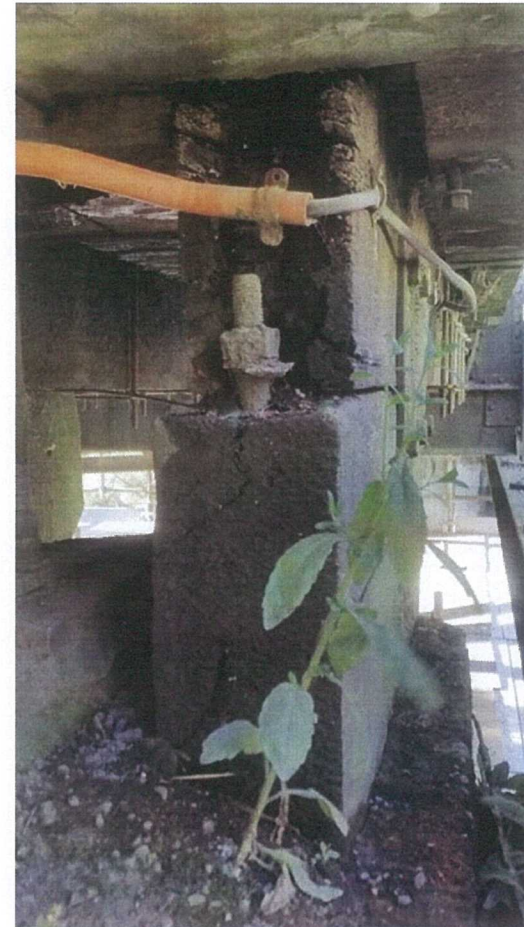
1992 Transferred to local council ownership (boundary bridge 50:50)



Feb 2016 Detailed Condition Assessment



Feb 2016 Rotten Timbers at Deck Ends



6 Tonne Weight Restriction



Oct 2016 Remedial Works



Oct 2016 Remedial Works Completed



But... further weaknesses throughout length



6 tonne weight restriction remains in effect today




What next?

Indicative Business Case

- 30 March Public Meeting
 - 6 April Workshop 1
 - 5 May Workshop 2
 - 6 June Draft Report
 - 30 June Final Report
-

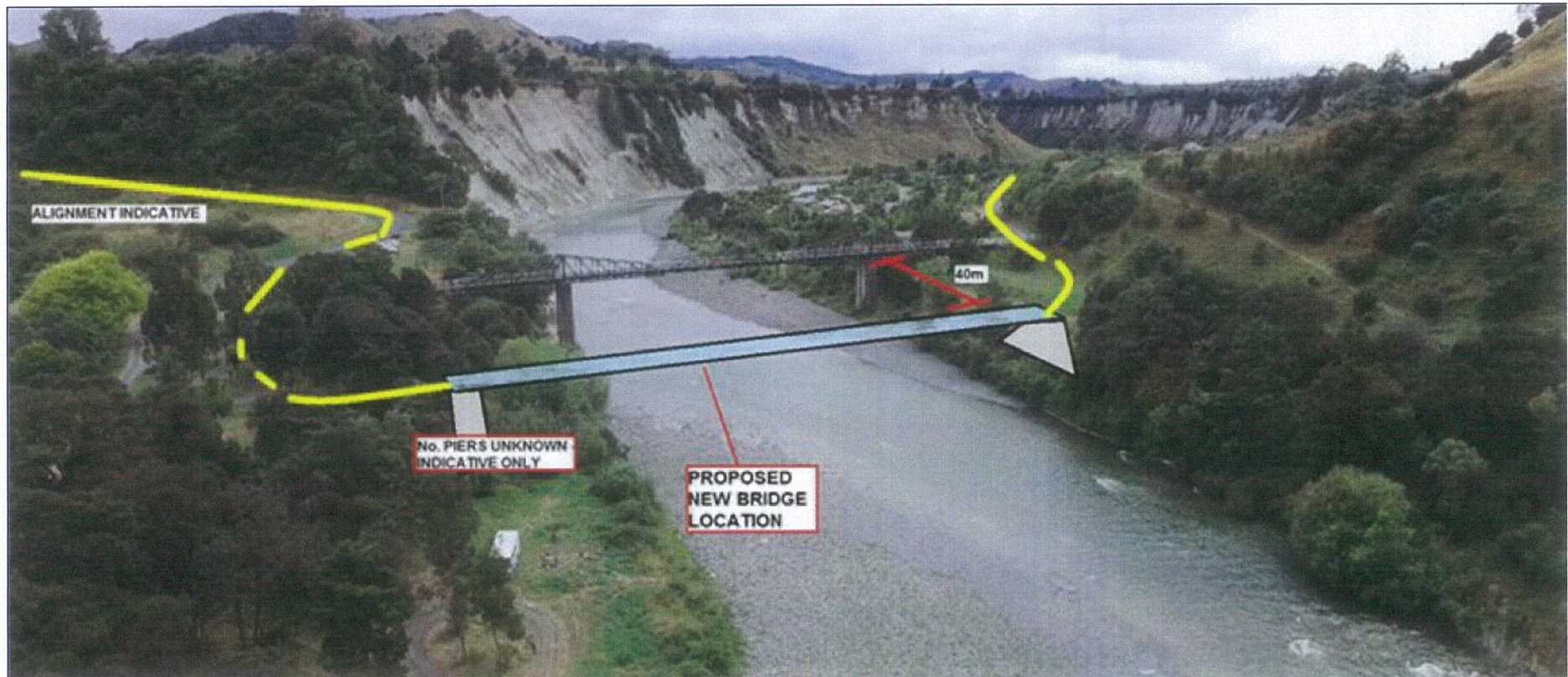


Options considered


1. Do minimum – business as usual
2. Minor strengthening
3. Major strengthening
4. New bridge on existing alignment
5. New bridge alongside existing bridge 
6. New bridge on new alignment (1.5 km upstream)

Recommended option

5. New bridge alongside existing bridge



Options for the Existing Bridge

1. Demolish
2. Disable
3. Retain for pedestrian & cycle traffic 

Next Step – Detailed Business Case

Detailed analysis of the *single* recommended option

- Strategic
- Economic
- Financial
- Management
- Hydrological and geotechnical investigations in preparation for design

Awaiting Formal Approvals from:

- Regional Land Transport Committee (done 6 June)
- NZTA
- Manawatu District Council
- Rangitikei District Council

Questions, Answers, Discussion



TABLED DOCUMENT

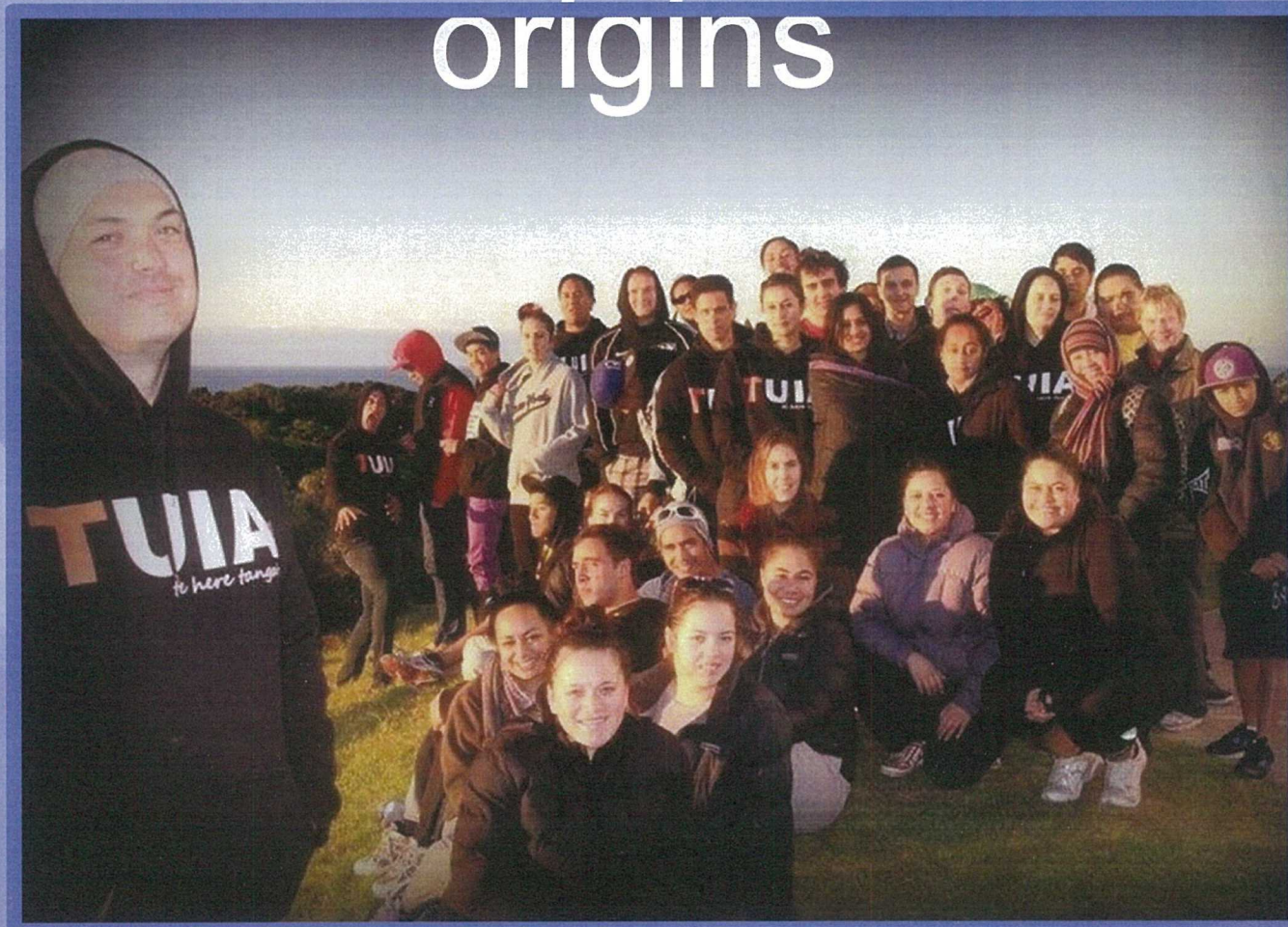
Tabled at TRAK-item 10a

On 13 June 2017



Tuia te here
tangata

Tuia and its origins



What does it look like for you?

- Rangatahi – Aged between 18-25
- Meet with your rangatahi at least once a month
- Invite them to different community events ie. Anzac Day, openings, ceremonies
- Meet travel costs for rangatahi to attend the 5 wananga



Tuia Mayoral Stats

Mayoral Pathway

Year	Number of Rangatahi
2011	23
2012	28
2013	23
2014	28
2015	27
2016	34
2017	49

- Mayoral pathway = **153**

- Other pathways = 59

Overall 212 rangatahi have



Mayoral involvements

2011

2012

2013

2014

2015

2016

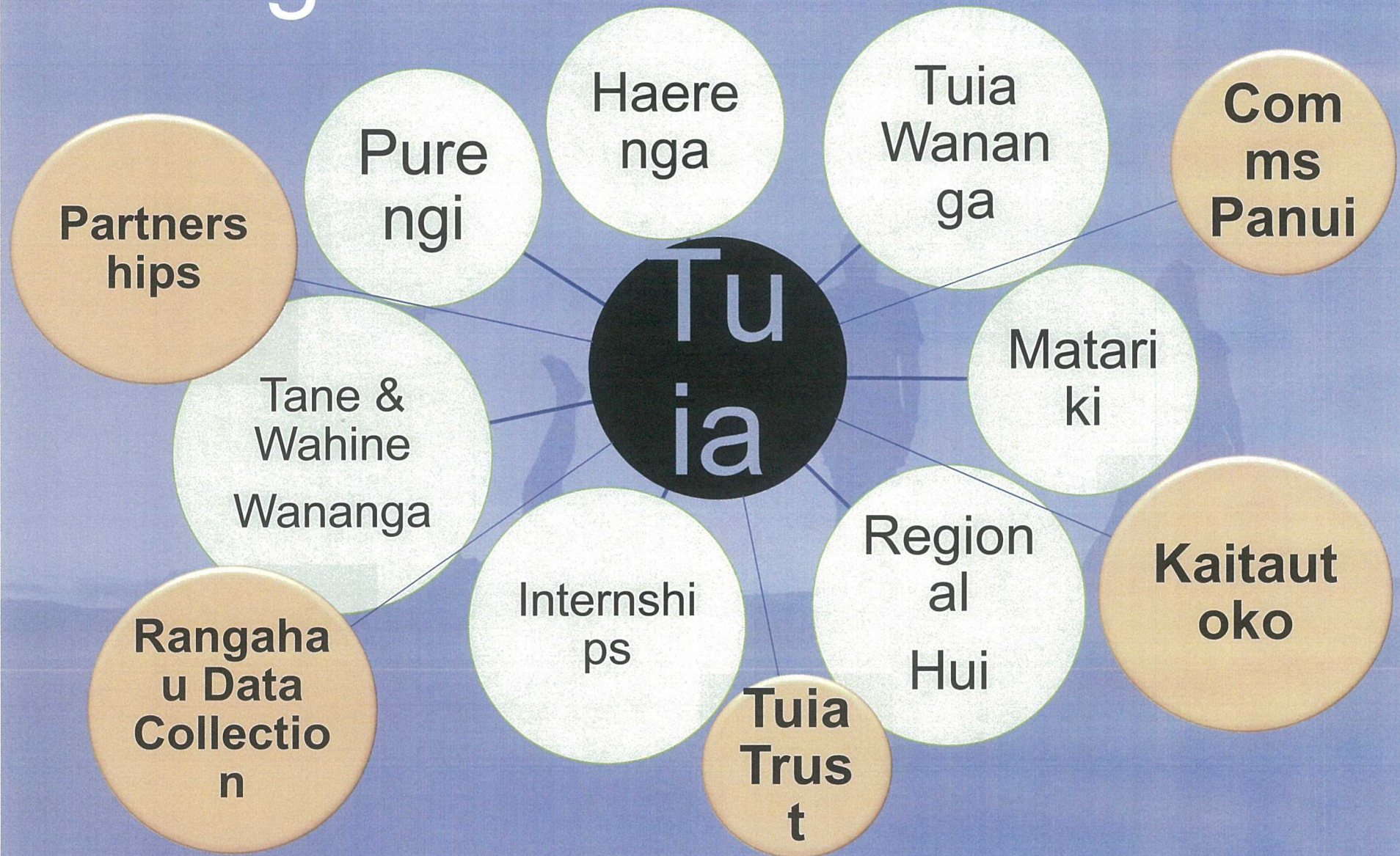
34 COUNCILS
IN TOTAL

ALMOST 50%

OF COUNCILS IN NZ

Far North
Gisborne
Hastings
Hauraki
Horowhenua
Hurunui
Hutt CC
Kapiti
Kawerau
Manawatu
Masterton
Matamata-
Piako
Napier
Nelson
New Plymouth

The growth of Tuia



Information and Support

- Prospectus
- Mayoral Mentoring Toolkit
- Mayoral Training Day (late Feb)

Support

Haimona Waititi

North Island Tuia Mentoring
Worker

haimona@tukaha.com

027 475 1011

Tihou Messenger-Weepu

South Island Tuia Mentoring
Worker

tihou@tukaha.com

022 684 8363

Kararaina Pahuru

Admin/Registration Manager

info@tukaha.com

021 827 801

Rawiri Tapiata

National Wānanga Co-ordinator

rawiri@tukaha.com

022 301 7799

A photograph of a man and a woman standing in a forest. The man, on the left, has a beard and is wearing a red quilted jacket over a black shirt. The woman, on the right, has long dark hair and is wearing a grey sweater with a colorful owl-patterned scarf. They are both looking towards the camera. The background is a dense forest with tall trees and green ferns.

Tuia video 2016-Large 540p

TABLED DOCUMENT

Tabled at TRAK - Item 10B

On 13 June 2017

a copy of this video has been loaded into Sharepoint, & is available on request.