



Pae Tawhiti

RANGITIKEI BEYOND

DRAFT COMMUNITY SPATIAL PLAN

Proud of our places and spaces

Koitiata

KOITIATA

Koitiata is a small coastal village with a mix of permanent and temporary residents. Located at the mouth of the Turakina River, it is a picturesque weekend destination for those in the know.

The natural environment, community-focused residents, recreation opportunities and campground are key strengths and opportunities for Koitiata.

The challenges as the community moves forward will be retaining the small village feel, addressing the flooding associated with the lagoon, climate impacts and improving cell phone coverage.

Key community priorities

- Retaining the Domain.
- Taking care of the environment.
- Recreation opportunities.
- Remaining a small coastal village.
- Campground upgrade.
- Fixing flooding associated with the lagoon.
- Better cell phone coverage.

KOITIATA





TURAKINA RIVER

VISION FOR *Koitiata*

Koitiata remains a quiet traditional coastal village that is connected as a community, with access to nature, green space, and a wide range of recreation opportunities.

Key themes

- 1 Access to open space and nature
- 2 Sense of community
- 3 Community facilities
- 4 Infrastructure and transport

Key Spatial Moves

- RE No residential expansion
- PA Papakāinga development
- CE No commercial development
- RC Retain domain for recreation

Legend

District Plan Zones

- Residential Zone
- Rural Zone
- Papakāinga

Map Features

- Building Footprint
- Property Boundaries
- Greenspace
- River
- Active Mobility Pathway





1

Access to open space and nature

The Koitiata community is strongly connected with the natural environment. There is easy access to the beach, Turakina River and open spaces.

The coastal area is significant, and is part of the Rangitikei Foredunes Outstanding Natural Landscape, identified as being vital to the contribution of healthy functioning coastal processes, with high aesthetic values of naturalness.

The community leads environmental protection and restoration work in the area, working in partnership with agencies and Councils.

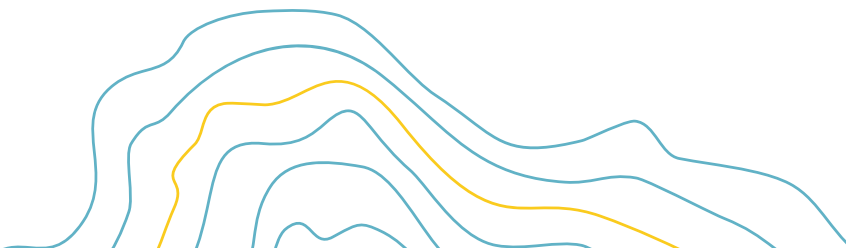


Priorities

- > Community-led restoration of wetlands along the coast.
- > Plant and animal pest management as part of environmental restoration.
- > Walkway development throughout the village and along the coast.
- > Continue to provide and increase access to the beach, river, wetlands, and forest areas.

“The beach is our outstanding and most significant feature It really is the essence of Koitiata, and why everybody lives here”

Community Voice



2

Sense of community

Koitiata is a close community, a place where everyone knows everyone.

The strong sense of community, and small village feel is important to the community to retain.

The sense of community is shown through the strong leadership by the community in the maintenance, development and restoration of community facilities and the natural environment.

Most of the community do not want to lose what makes Koitiata special, and do not want housing or commercial development.

Priorities

- > Retain the traditional 'coastal village' feel.
- > Enable at home businesses that contribute to the charm of the village.
- > Recognise community leadership in community and environmental projects.



"The committee have done an amazing job in this area and do a good job of getting people involved in projects and celebrating nature in our area."

Community Voice



Koitiata



Turakina Beach

"I think the river, lagoon and beach are the most significant nature networks, and the local community is already involved in taking care of them."

Community Voice



◆ Koitiata playground and BBQ area

Future growth

Commercial

The village does not have a commercial zone and there is no demand for one yet.

The community is generally resistant to new businesses being developed in the village, with concern about the impact businesses could have on the peaceful nature of the village.

There are several locals that run at-home businesses. This type of activity should be enabled.

Residential and lifestyle growth

The village has approximately 114 homes (2018), with many of them used as holiday homes. The whole of the village is zoned as Residential, however, only a few houses are connected to a reticulated wastewater system. All houses supply their own water. Land to the north of the village has been identified for future papakāinga development, with local hapū Ngā Ariki making plans for its development. In the Long Term some residents may need to relocate due to rising sea levels and these relocations should be provided for within or on the fringe of the settlement.

Apart from the area identified for papakāinga development, no residential growth areas have been identified at Koitiata for the following reasons:

- As a coastal settlement, the village is vulnerable to climate impacts such as sea level rise, tsunami or flooding from the nearby Turakina River.
- Significant housing growth will require expansion of the reticulated wastewater system and investigation into a reticulated water supply.
- There are limited areas for future growth to occur.
- Much of the community are resistant to future housing development in the village itself.

“I LOVE the fact that it is a small community, untouched by commercialism and tourists.”

Community Voice



📍 Koitiata Community Centre

3 Community facilities

Koitiata has access to a wide range of community and recreation facilities and is a popular weekend destination.

The hall, playground, public toilets, campground, greenspaces, domain, access to the beach and fire station are important to the community.

The local community take a leadership role in the development of key community and recreation facilities in the village. The Koitiata Residents Association has led the development of the community hall and is a key partner in the regeneration of the local wetlands.

There is strong support from within the community for retaining the 'Koitiata Domain' for recreation purposes. The area is used for a range of activities – horse riding, quads, sports, dog walking, community events, kids, motorbikes, parking.

Visitors come for the natural environment, and walkers on the Te Araroa Trail often use the village as an overnight stop. The campground is popular, but the facilities need an upgrade.

Priorities

- > Celebrating the community hall as the heart of the community, managed by the community for the community.
- > Retain the 'Koitiata Domain' as an open space.
- > Playground redevelopment.
- > Invest in facilities that enhance Koitiata as a visitor destination (campground, toilets & showers).





📍 Koitata playground



📍 Turakina Beach



📍 Koitata

4

Infrastructure and transport

The lagoon is causing flooding issues in the village and is a top priority for the community.

The Koitata community is dependent on private vehicles. With a small community and its location on the coast, alternative public transport solutions are needed to support this community – such as an on-demand shuttle service.

The Te Araroa Trail travels through the village. There is the opportunity to create an active mobility pathway along Turakina Beach Road to increase safety, and provide an alternative option for the Koitata community to connect with Turakina and the surrounds.

Priorities

- > Addressing flooding issues that are associated with the lagoon.
- > Development of active mobility pathways to increase connections and support active recreation.
- > Advocate for the trial of innovative public transport options.
- > Work alongside the community to understand climate impacts and improve resilience.
- > Improved cell phone reception.

“Sort out flooding from lagoon”

Community Voice

“Lack of sewerage system poor mobile reception power cuts often in bad weather, flooding.”

Community Voice

Action Plan

Rangitikei Priority Area	Key Themes	Project			
Healthy Communities Unique Communities	ACCESS TO OPEN SPACE AND NATURE	1	1.1	Support the community-led restoration and promotion of the wetlands and the wider natural environment.	
			1.2	Investigate opportunities for the development of walkways.	
			1.3	Support the community and regional council in pest management.	
Healthy Communities Unique Communities	SENSE OF COMMUNITY	2	2.1	Support Nga Ariki in their aspirations for the development of papakāinga.	
Thriving Communities	COMMUNITY FACILITIES	3	3.1	Invest in the redevelopment of the public toilets/showers at the campground.	
			3.2	Consider rezoning of the Koitiata Domain as open space.	
			3.3	Support community-led development of the playground in alignment with the Parks, Open Spaces and Sporting Facilities Strategy	
Healthy Communities Connected Communities	INFRASTRUCTURE AND TRANSPORT	4	4.1	Advocate to Horizons Regional Council to address flooding issues associated with the Lagoon.	
			4.2	Undertake a needs assessment for the development of an active mobility pathway from Koitiata to Turakina.	
			4.3	When demand requires, advocate for the implementation of innovative public transport solutions.	
			4.4	Work with the community to educate about climate resilience, investigate potential impacts, and develop solutions for increasing resilience.	

The actions identified in the Action Plan are not guaranteed to be developed. Council will consider which actions are developed through long term planning processes and collaboration with implementation partners.

Quick win <1 year | Short term 1 - 5 years | Medium term 6 - 10 years | Long term 10+

	Timeframe	Council's role(s)	Project Partners and Key Stakeholders
	▶▶▶ Ongoing	Advocate Partner	Community Regional Council Mana whenua
	📅 Long term	Service provider Partner	Community Mana whenua
	📅 Long term	Service provider Partner	Community Mana whenua Regional Council
	🕒 Short Term	Strategy / Regulation	Mana whenua Regional Council Te Puni Kokiri
	⌚ Medium Term	Service Provider	Community Regional Council
	📅 Long Term	Strategy / regulation	Community
	📅 Long Term	Partner	Community
	▶▶▶ Ongoing	Advocate	Community Regional Council Mana whenua Waka Kotahi
	📅 Long Term	Service Provider	
	📅 Long Term	Advocate	
	🕒 Short Term - Long Term	Facilitation / Information Strategy / Regulation Partner	

Kōrero Mai

KOITIATA

Our objectives

Through creating the draft Community Spatial Plan we want to achieve the following:

1. Articulate community aspirations for future land use and development.
2. Provide a blueprint of future land use and growth throughout the Rangitikei.
3. Collaborate with iwi and hapū to embed cultural values into how we plan for growth and development in the Rangitikei.
4. Guide infrastructure investment decisions and enable targeted future proofing.
5. Inform and shape the District Plan Review and Council's other plans and strategies.
6. Build confidence and identify potential for industrial, commercial, and residential development.

The actions identified in the Action Plan are not guaranteed to be developed. Council will consider which actions are developed through long term planning processes and collaboration with implementation partners. If they are developed, these potential growth areas will need to go through a District Plan change process to rezone them for residential or rural lifestyle use.

To learn more about what this means please visit www.rangitikei.govt.nz/paetawhiti

RANGITIKEI
the way life should be

**Share your thoughts
on the future for
Koitiata by filling out a
submission form and:**

🏠 Posting to Attention:
Pae Tawhiti Rangitikei Beyond,
Reply Paid:172050,
Private Bag 1102, Marton 4741

✉ Emailing us at
info@rangitikei.govt.nz

👍 Dropping off at one of our
Offices, Libraries or
Information Centres.

💬 Attending one of our
community events throughout
the District.

🌐 Going online
www.rangitikei.govt.nz/paetawhiti

**Have your say by 5pm
Tuesday 25 April 2023**

**Want to learn more about
our plans for the future?**

**View the full draft Community Spatial
Plan document:**

🌐 Online at
www.rangitikei.govt.nz/paetawhiti
(accessible at our libraries and
service centres).

💬 In hard copy at Te Matapihi,
Bulls, the Taihape Library, Marton
Library or the Marton Main Office
and Hunterville Bookshop.

Want to know more?

Contact the Project Lead:
Katrina Gray on 0800 422 522 or
katrina.gray@rangitikei.govt.nz