

## Look inside

This summary provides a snapshot of the key aspects of the draft spatial plan for the **ŌHOTU** community!



# Pae Tawhiti

## RANGITĪKEI BEYOND

# DRAFT COMMUNITY SPATIAL PLAN

Proud of our places and spaces

Kōrero  
Mai

## Ōhotu Summary

*The draft Community Spatial plan is the blueprint for how we want the Rangitikei District to develop over the next 30 years.*

As our district grows, we're making plans to ensure that we can grow in a way that works for our communities; with enough land available to accommodate new homes and businesses as they put down roots in Rangitikei.

*Have your say on the future for Ōhotu  
by 5pm, Tuesday 25 April 2023*



# Our vision for Ōhotu



Ōhotu remains a small rural village.

In 2022, we undertook community engagement on what is important for future growth.

From this feedback, we've identified key themes that are important to the Ōhotu community. Each theme is linked to priorities and an action plan.



## Key Themes

### 1 Retain as a rural village

#### Priorities

- > Retain Ōhotu as a rural lifestyle village.

## Action Plan

Project			Timeframe	Council's role(s)	Project Partners and Key Stakeholders
1	1.1	Consider whether Rural zoning is appropriate for Ōhotu.	 Short Term	Strategy / Regulation	Community Mana whenua Waka Kotahi
	1.2	Encourage community-led management of the local hall.	 Medium Term	Facilitation / Information	Community Mana whenua

# Ōhotu Overview

## Key Themes

- 1 Retain as a rural village

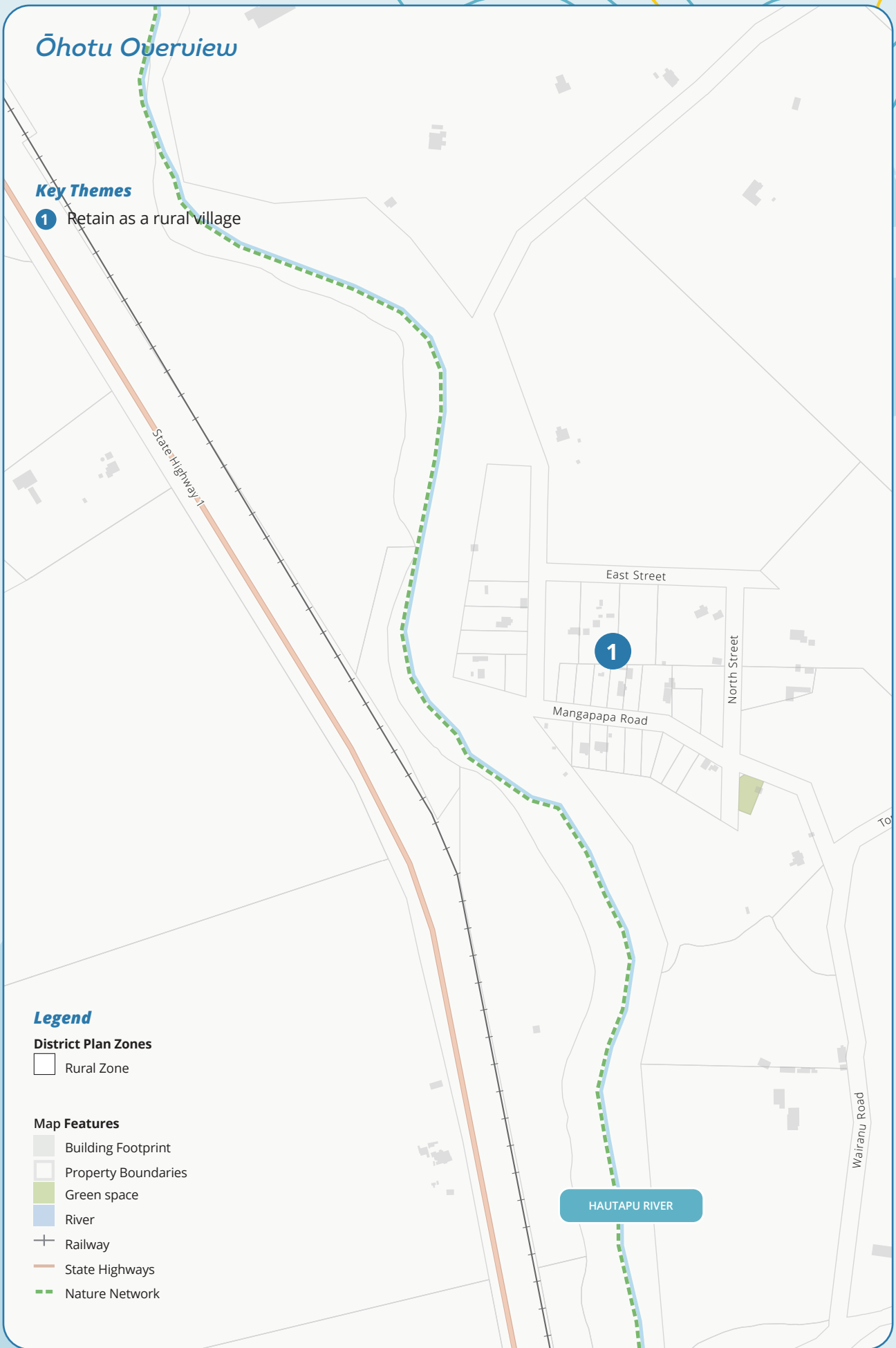
## Legend

### District Plan Zones

- Rural Zone


### Map Features


- Building Footprint
- Property Boundaries
- Green space
- River
- Railway
- State Highways
- Nature Network





# Kōrero Mai

**Share your thoughts on the future for Ōhotu by filling out a submission form and:**

 **Posting** to Attention:  
Pae Tawhiti Rangitikei Beyond,  
Reply Paid:172050,  
Private Bag 1102, Marton 4741

 **Emailing** us at  
[info@rangitikei.govt.nz](mailto:info@rangitikei.govt.nz)

 **Dropping** off at one of our  
Offices, Libraries or  
Information Centres.


 **Attending** one of our  
community events throughout  
the District.


 **Going online**  
[www.rangitikei.govt.nz/paetawhiti](http://www.rangitikei.govt.nz/paetawhiti)

**Have your say by 5pm  
Tuesday 25 April 2023**

**Want to learn more about  
our plans for the future?**

**View the full draft Community Spatial  
Plan document:**

 Online at  
[www.rangitikei.govt.nz/paetawhiti](http://www.rangitikei.govt.nz/paetawhiti)  
(accessible at our libraries and  
service centres).

 In hard copy at Te Matapihi,  
Bulls, the Taihape Library, Marton  
Library or the Marton Main Office  
and Hunterville Bookshop.

**Want to know more?**

Contact the Project Lead:  
Katrina Gray on 0800 422 522 or  
[katrina.gray@rangitikei.govt.nz](mailto:katrina.gray@rangitikei.govt.nz)

## Our objectives

Through creating the draft Community Spatial Plan we want to achieve the following:

1. Articulate community aspirations for future land use and development.
2. Provide a blueprint of future land use and growth throughout the Rangitikei.
3. Collaborate with iwi and hapū to embed cultural values into how we plan for growth and development in the Rangitikei.
4. Guide infrastructure investment decisions and enable targeted future proofing.
5. Inform and shape the District Plan Review and Council's other plans and strategies.
6. Build confidence and identify potential for industrial, commercial, and residential development.

*The actions identified in the Action Plan are not guaranteed to be developed. Council will consider which actions are developed through long term planning processes and collaboration with implementation partners. If they are developed, these potential growth areas will need to go through a District Plan change process to rezone them for residential or rural lifestyle use.*

To learn more about what this means please visit  
[www.rangitikei.govt.nz/paetawhiti](http://www.rangitikei.govt.nz/paetawhiti)

**RANGITIKEI**  
*the way life should be*