

Look inside

This summary provides a snapshot of the key aspects of the draft spatial plan for the **RĀTĀ** community!



Pae Tawhiti RANGITĪKEI BEYOND

DRAFT COMMUNITY SPATIAL PLAN

Proud of our places and spaces

*Kōrero
Mai*

Rātā Summary

The draft Community Spatial plan is the blueprint for how we want the Rangitikei District to develop over the next 30 years.

As our district grows, we're making plans to ensure that we can grow in a way that works for our communities; with enough land available to accommodate new homes and businesses as they put down roots in Rangitikei.

*Have your say on the future for Rātā
by 5pm, Tuesday 25 April 2023*



Our vision for Rātā



Rātā is the cultural hub for Ngāti Hauiti, with Rātā marae at the heart of papakāinga which has enabled many whānau to return and reconnect with their whenua.

In 2022, we undertook community engagement on what is important for future growth.

From this feedback, we've identified key themes that are important to the Rātā community. Each theme is linked to priorities and an action plan.

Key Themes

1 Papakāinga

Priorities

- > Development of papakāinga housing on iwi-owned land.

2 Environmental Restoration

Priorities

- > Restoration of the Pourewa Stream.
- > Enhancements to the Rangitīkei River.

Action Plan

Project			Timeframe	Council's role(s)	Project Partners and Key Stakeholders
1	1.1	Review the District Plan approach for papakāinga development for Rātā.	⌚ Medium Term	Strategy / Regulation	Mana whenua Te Puni Kokiri Regional Council Landowners
	1.2	Work collaboratively to support the development of papakāinga housing, including the provision of infrastructure.	▶▶▶ Ongoing	Supporter Facilitation / Information	
2	2.1	Support environmental restoration projects being led by mana whenua and the community e.g. fencing and planting of the Pourewa Stream.	▶▶▶ Ongoing	Facilitation / Information	Mana whenua RRCC Regional Council

Rātā Overview

Key themes

- 1 Papakāinga
- 2 Environmental Restoration

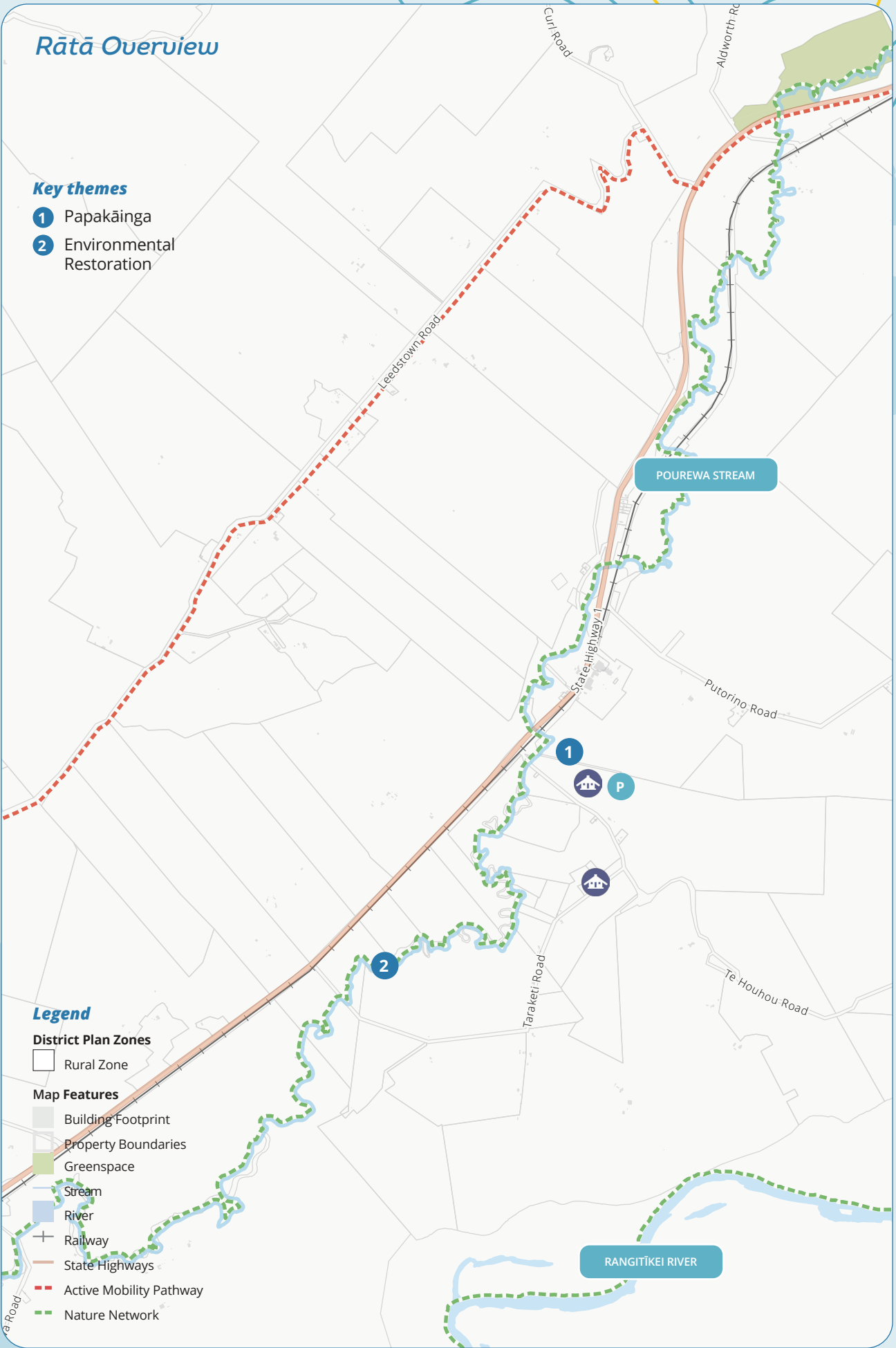
Legend

District Plan Zones

- Rural Zone

Map Features

- Building Footprint
- Property Boundaries
- Greenspace
- Stream
- River
- Railway
- State Highways
- Active Mobility Pathway
- Nature Network



Kōrero Mai

Share your thoughts on the future for Rātā by filling out a submission form and:



Posting to Attention:

Pae Tawhiti Rangitikei Beyond,
Reply Paid:172050,
Private Bag 1102, Marton 4741



Emailing us at

info@rangitikei.govt.nz



Dropping off at one of our
Offices, Libraries or
Information Centres.



Attending one of our
community events throughout
the District.



Going online

www.rangitikei.govt.nz/paetawhiti

**Have your say by 5pm
Tuesday 25 April 2023**

**Want to learn more about
our plans for the future?**

**View the full draft Community Spatial
Plan document:**



Online at

www.rangitikei.govt.nz/paetawhiti
(accessible at our libraries and
service centres).



In hard copy at Te Matapihi,
Bulls, the Taihape Library, Marton
Library or the Marton Main Office
and Hunterville Bookshop.

Want to know more?

Contact the Project Lead:
Katrina Gray on 0800 422 522 or
katrina.gray@rangitikei.govt.nz

Our objectives

Through creating the draft Community Spatial Plan we want to achieve the following:

1. Articulate community aspirations for future land use and development.
2. Provide a blueprint of future land use and growth throughout the Rangitikei.
3. Collaborate with iwi and hapū to embed cultural values into how we plan for growth and development in the Rangitikei.
4. Guide infrastructure investment decisions and enable targeted future proofing.
5. Inform and shape the District Plan Review and Council's other plans and strategies.
6. Build confidence and identify potential for industrial, commercial, and residential development.

The actions identified in the Action Plan are not guaranteed to be developed. Council will consider which actions are developed through long term planning processes and collaboration with implementation partners. If they are developed, these potential growth areas will need to go through a District Plan change process to rezone them for residential or rural lifestyle use.

To learn more about what this means please visit
www.rangitikei.govt.nz/paetawhiti

RANGITIKEI
the way life should be