



# *Pae Tawhiti*

## RANGITIKEI BEYOND

---

# DRAFT COMMUNITY SPATIAL PLAN

Proud of our places and spaces

*Whangaehu*

# WHANGAEHU

*The small settlement of Whangaeahu sits along State Highway 3 on the western side of the Whangaeahu River within close commuting distance to Whanganui.*

The Whangaeahu village is the western gateway to the Rangitikei District.

Whangaeahu Marae is located just a short drive from the village and is associated with Rangiwahakaturia-Taitapu.

The settlement has a church, hall and local primary school.

## **Key community priorities**

- Flood resilience.
- Protecting the natural environment.





## VISION FOR *Whangaehu*

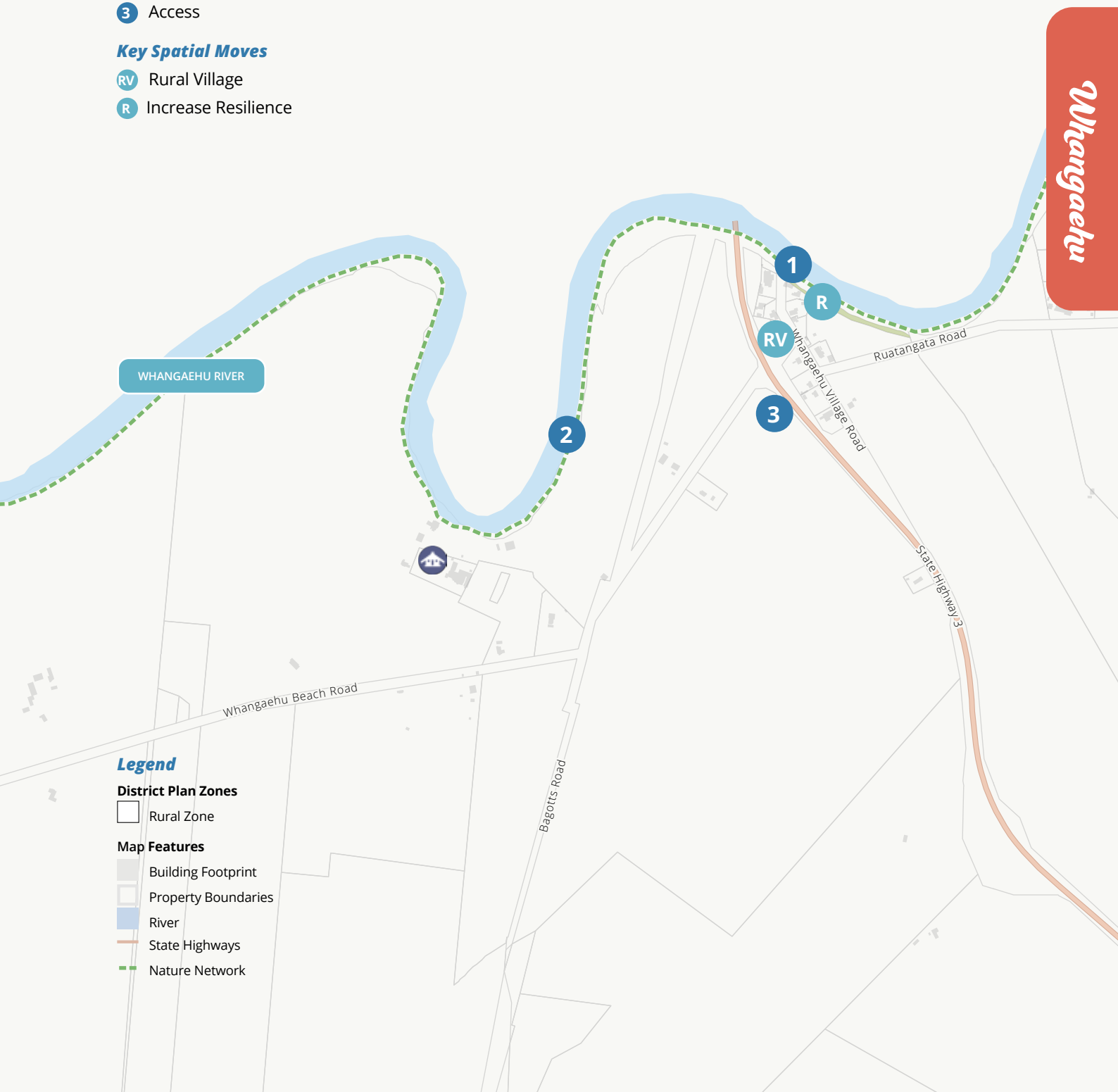
**Whangaehu** is a thriving rural community, strongly connected with the Whangaehu River, high flood resilience, biodiversity and water quality.

### Key Themes

- 1 Resilience
- 2 Environment
- 3 Access

### Key Spatial Moves

- RV Rural Village
- R Increase Resilience



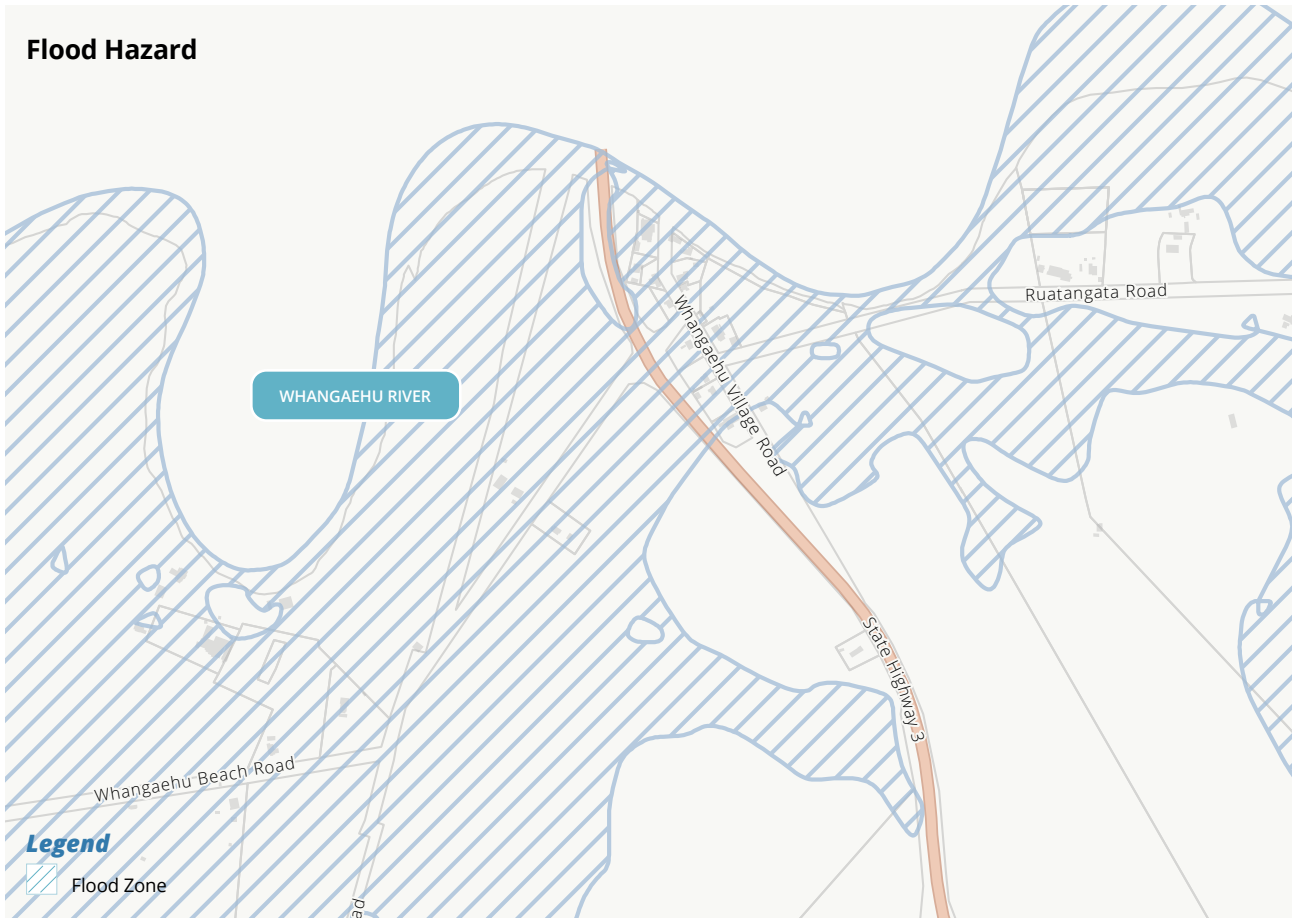
### Legend

#### District Plan Zones

- Rural Zone

#### Map Features

- Building Footprint
- Property Boundaries
- River
- State Highways
- Nature Network



## 1 Resilience

Whangaehu village is at risk from flooding from the Whangaehu River.

Parts of the settlement have been impacted by significant floods in the past and the risk of future flooding is likely to get worse over time. The village is also at risk from lahar travelling down the Whangaehu River from the Ruapehu volcano.

The village has no reticulated services and is located on a strip of Class 2 land that runs alongside the river.

Given the significant flood hazard impacting the settlement, no future housing development will be allowed in the village. A few more houses may be developed in the surrounding rural environment.



“High flood resilience”

Community Voice

### Priorities

- > Increase resilience and reduce risk to residents associated with flooding from the Whangaehu River.





## 2 Environment

The community is strongly connected to the Whangaehu River and want water quality and biodiversity improved.

### Priorities

- > Water quality and biodiversity improvement.

“Dramatically increased biodiversity and water quality”

Community Voice

Whangaehu



## 3 Access

Whangaehu is the western gateway to the Rangitikei.

There is no public transport available, and access to the village from State Highway 3 can be challenging.

### Priorities

- > Enhancing Whangaehu as the western gateway into the Rangitikei.
- > Increase traffic safety.
- > Advocate for improved public transport options, including rail.



## Action Plan

Rangitikei Priority Area	Key Themes	Project			
Healthy Communities	RESILIENCE	1	1.1	Work alongside the community and Horizons Regional Council to undertake a risk assessment and investigate and implement options for reducing the risk associated with flooding from the Whangaehu River.	
Healthy Communities	ENVIRONMENT	2	2.1	Recognise the work being completed by the Rangitikei Rivers Catchment Collective Whangaehu sub-group that support environmental improvements.	
Connected Communities Unique Communities	ACCESS	3	3.1	Enhance the entrance to Whangaehu to increase the sense of arrival in the Rangitikei.	
			3.2	Investigate options for increasing traffic safety through the village.	
			3.3	Advocate for improved public transport options.	

The actions identified in the Action Plan are not guaranteed to be developed. Council will consider which actions are developed through long term planning processes and collaboration with implementation partners.

Quick win <1 year | Short term 1 - 5 years | Medium term 6 - 10 years | Long term 10+

	Timeframe	Council's role(s)	Project Partners and Key Stakeholders
	⌚ Medium Term	Strategy / Regulator Partner	Regional Council Community Waka Kotahi
	▶▶▶ Ongoing	Facilitation / Information	Catchment Group Regional Council Community
	⌚ Medium Term	Partner Service Provider	Waka Kotahi Community
	⌚ Medium Term	Advocate	Community Mana whenua Waka Kotahi
	⌚ Medium Term	Advocate	Community Regional Council Kiwi Rail



WHANGAEHU

### Our objectives

Through creating the draft Community Spatial Plan we want to achieve the following:

1. Articulate community aspirations for future land use and development.
2. Provide a blueprint of future land use and growth throughout the Rangitikei.
3. Collaborate with iwi and hapū to embed cultural values into how we plan for growth and development in the Rangitikei.
4. Guide infrastructure investment decisions and enable targeted future proofing.
5. Inform and shape the District Plan Review and Council's other plans and strategies.
6. Build confidence and identify potential for industrial, commercial, and residential development.


*The actions identified in the Action Plan are not guaranteed to be developed. Council will consider which actions are developed through long term planning processes and collaboration with implementation partners. If they are developed, these potential growth areas will need to go through a District Plan change process to rezone them for residential or rural lifestyle use.*


*To learn more about what this means please visit [www.rangitikei.govt.nz/paetawhiti](http://www.rangitikei.govt.nz/paetawhiti)*


**RANGITIKEI**  
*the way life should be*


**Kōrero  
Mai**

**Share your thoughts  
on the future for  
Whangāehu by filling out  
a submission form and:**

 **Posting** to Attention:  
Pae Tawhiti Rangitikei Beyond,  
Reply Paid:172050,  
Private Bag 1102, Marton 4741

 **Emailing** us at  
[info@rangitikei.govt.nz](mailto:info@rangitikei.govt.nz)

 **Dropping** off at one of our  
Offices, Libraries or  
Information Centres.


 **Attending** one of our  
community events throughout  
the District.


 **Going online**  
[www.rangitikei.govt.nz/paetawhiti](http://www.rangitikei.govt.nz/paetawhiti)

**Have your say by 5pm  
Tuesday 25 April 2023**

**Want to learn more about  
our plans for the future?**

**View the full draft Community Spatial  
Plan document:**

 Online at  
[www.rangitikei.govt.nz/paetawhiti](http://www.rangitikei.govt.nz/paetawhiti)  
(accessible at our libraries and  
service centres).

 In hard copy at Te Matapihi,  
Bulls, the Taihape Library, Marton  
Library or the Marton Main Office  
and Hunterville Bookshop.

**Want to know more?**

Contact the Project Lead:  
Katrina Gray on 0800 422 522 or  
[katrina.gray@rangitikei.govt.nz](mailto:katrina.gray@rangitikei.govt.nz)